

PLEASE CHECK WWW.MOLEX.COM FOR LATEST PART INFORMATION

Part Number: [1301280114](#)
Status: **Active**
Overview: [Outlet Boxes](#)
Description: Woodhead FD Yellow Glass-Filled Polyester Box, Corrosion -resistant (2) 12.70mm (.500") Threaded Knock-out Openings

Documents:

[RoHS Certificate of Compliance \(PDF\)](#) [Product Literature \(PDF\)](#)

Agency Certification

UL E117594

General

Product Family Power Distribution
 Series [130128](#)
 Enclosure Rating N/A
 GFCI Reset N/A
 Mounting Style Permanent
 Open Neutral Relay N/A
 Overview [Outlet Boxes](#)
 Product Literature Order No 987650-7737
 Product Name Woodhead
 Receptacle Type N/A
 Type FD Box - Wet Location
 UPC 78678877952
 Woodhead Yes

Physical

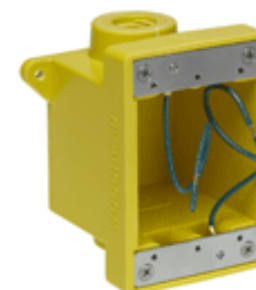
Cord Diameter N/A
 Cord Grip Body Size N/A
 Cord Length N/A
 Feed-Thru No
 Flip Lid No
 Material - Housing PBT Glass-Filled
 Net Weight 406.872/g
 Number of Receptacles 0
 Packaging Type Carton

Electrical

Cord Type N/A
 Current - Maximum per Contact N/A
 GFCI No
 Ground Continuity Monitor No
 NEMA Configuration N/A
 Voltage - Maximum N/A

Material Info

Engineering Number 452CR



Series image - Reference only

EU ELV

Not Reviewed

EU RoHS

Not Reviewed

REACH SVHC

Not Reviewed

Halogen-Free

Status

Not Reviewed

Need more information on product environmental compliance?

Email productcompliance@molex.com
 Please visit the [Contact Us](#) section for any non-product compliance questions.

China ROHS	Not Reviewed
ELV	Not Reviewed
RoHS Phthalates	Not Reviewed

China RoHS

Search Parts in this Series

[130128](#) Series