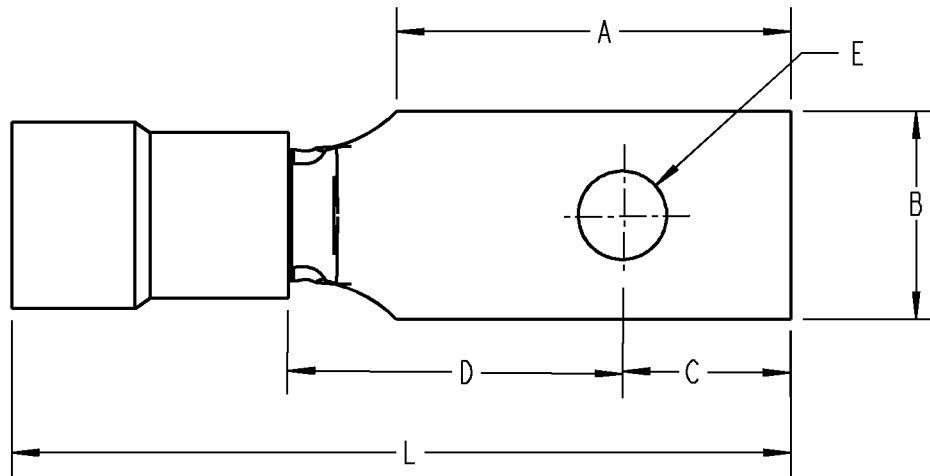




ALL DIMENSIONS ARE APPROXIMATE, FOR REFERENCE ONLY.



MATERIAL:

1. TONGUE - ELECTROLYTIC COPPER-TIN PLATED
2. GRIP SLEEVE - BRONZE- TIN PLATED
3. INSULATOR - NYLON

NOTE:

1. FOR USE WITH BU-SHIPS TERMINAL BOARDS CONFORMING TO MILITARY SPECIFICATIONS

| CAT. NO. | COLOR CODE | MS 17143 DASH | NAVY WIRE SIZE | AWG. | "E" BOLT SIZE | TONGUE DIMENSIONS | | | | | BU-SHIPS TONGUE SHAPE | FOR USE WITH BU-SHIPS TERM. BOARD TYPES |
|----------|------------|---------------|----------------|----------|---------------|-------------------|------------|------------|-----------|-----------|-----------------------|---|
| | | | | | | A -.031 | B -.005 | C ±.010 | D MIN. | L MAX. | | |
| RA-480 | RED | -1 | 1-2 | 22 TO 18 | 8 | .701 | .390 | .310 | .621 | 1.359 | L80P-1 | 3TB, 4TB, 5TB 16TB, 17TB, 18TB |
| RA-481 | | -4 | | | 6 | .482 | .302 | .227 | .465 | 1.109 | L81P-1 | 6TB, 7TB, 9TB |
| RA-482 | | -7 | | | 8 | .482 | .302 | .227 | .465 | 1.109 | L82P-1 | 15TB |
| RA-483 | | -10 | | | 5 | .328 | .277 | .143 | .277 | .859 | L83P-1 | 8TB |
| RA-484 | | -13 | | | 6 | .450 | .237 | .195 | .404 | 1.015 | L84P-1 | 11TB, 10TB |
| RA-485 | | -16 | | | 4 | .450 | .237 | .195 | .404 | 1.015 | L85P-1 | 25TB, 27TB |
| RA-486 | | -19 | | | 4 | .296 | .237 | .143 | .237 | .796 | L86P-1 | 26TB |

GENERAL NOTES

1. ALL DIMENSIONS ARE FOR REFERENCE ONLY.
2. DIMENSIONS IN BRACKETS [] ARE IN METRIC UNITS.

REVISIONS

*** SEE ERN (****) FOR APPROVAL SIGNATURES & RELEASE DATE.
PROJECT NO: ****

Thomas & Betts
www.tnb.com

DESCRIPTION:

**RECTANGULAR TONGUE
STA-KON TERMINALS**

ORIGINAL PROJECT NO / (ERN NO)

TM401330 / (2007516)

SHEET NO:

1 OF 2

REV. NO:

**

DRAWING NO:

WSD-000316

| CAT. NO. | COLOR CODE | MS 17143 DASH | NAVY WIRE SIZE | AWG. | "E" BOLT SIZE | TONGUE DIMENSIONS | | | | | BU-SHIPS TONGUE SHAPE | FOR USE WITH BU-SHIPS TERM. BOARD TYPES |
|----------|------------|---------------|----------------|----------|---------------|-------------------|------------|------------|-----------|-----------|-----------------------|---|
| | | | | | | A -.031 | B -.005 | C ±.010 | D MIN. | L MAX. | | |
| RB-480 | BLUE | -2 | 2-1/2 TO 4 | 16 TO 14 | 8 | .701 | .390 | .310 | .621 | 1.359 | L80P-2 | 3TB, 4TB, 5TB 16TB, 17TB, 18TB |
| RB-481 | | -5 | | | 6 | .482 | .302 | .227 | .465 | 1.109 | L81P-2 | 6TB, 7TB, 9TB |
| RB-482 | | -8 | | | 8 | .482 | .302 | .227 | .465 | 1.109 | L82P-2 | 15TB |
| RB-483 | | -11 | | | 5 | .328 | .277 | .143 | .277 | .859 | L83P-2 | 8TB |
| RB-484 | | -14 | | | 6 | .450 | .237 | .195 | .404 | 1.015 | L84P-2 | 11TB, 10TB |
| RB-485 | | -17 | | | 4 | .450 | .237 | .195 | .404 | 1.015 | L85P-2 | 25TB, 27TB |
| RB-486 | | -20 | | | 4 | .296 | .237 | .143 | .237 | .796 | L86P-2 | 26TB |
| RC-480 | YELLOW | -3 | 6-9 | 12 TO 10 | 8 | .701 | .390 | .310 | .621 | 1.460 | L80P-3 | 3TB, 4TB, 5TB 16TB, 17TB, 18TB |
| RC-481 | | -6 | | | 6 | .482 | .302 | .227 | .465 | 1.220 | L81P-3 | 6TB, 7TB, 9TB |
| RC-482 | | -9 | | | 8 | .482 | .302 | .227 | .465 | 1.220 | L82P-3 | 15TB |
| RC-483 | | -12 | | | 5 | .328 | .277 | .143 | .277 | .950 | L83P-3 | 8TB |
| RC-484 | | -15 | | | 6 | .450 | .237 | .195 | .404 | 1.125 | L84P-3 | 11TB, 10TB |
| RC-485 | | -18 | | | 4 | .450 | .237 | .195 | .404 | 1.125 | L85P-3 | 25TB, 27TB |
| RC-486 | | -21 | | | 4 | .296 | .237 | .143 | .237 | .910 | L86P-3 | 26TB |

INSTALLING TOOLS:

1. MILITARY STD. CRIMPING TOOLS

CLASS I. DANIELS TOOL ,HX4 Y501 DIE

CLASS II. ERG-2001, WT145C

#12050 TOOL WITH DIES

12051 DIE FOR RA SERIES

12052 DIE FOR RB SERIES

12056 DIE FOR RC SERIES

2. COMMERCIAL TOOLS: WT145C, ERG2001, WT145A, WT2000

Thomas & Betts
www.tnb.com

DESCRIPTION:

**RECTANGULAR TONGUE
STA-KON TERMINALS**

SHEET NO:

2 OF 2

REV. NO:

DRAWING NO:

WSD-000316