

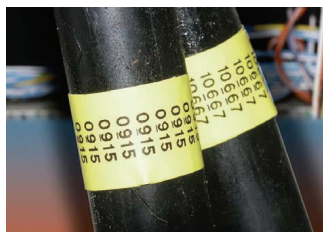
E-Z-Code®

EZL100-Kit



The E-Z-Code® EZL100-Kit features the EZL-100 label printer with everything you need to make wire marking fast and simple. The EZL100-Kit features a rugged, hard-sided case, a printer, two label cassettes, a complete set of batteries, and an AC adapter. The EZL100-Kit gets you quickly started and provides handy storage for your wire marking materials. If you already own an EZL-100 printer, you may also purchase the hard-sided case or any of the accessories separately. Contact your local T&B distributor about the EZL-100 Printer, kit, case and accessories. Don't forget to ask about the complete line of time-saving products offered by Thomas & Betts.

Easy to Use Won't Smear



Great for Rough Surface Cables



High-Visibility Print

Simple, Accurate Wire Marking at the Touch of a Button.

- One-touch Hotkeys create labels instantly for wire wrapping, terminal blocks, device covers, patch panels, and labels in a series
- Symbols for commonly used electrical and datacom applications including ohm, ground, phone, data and fax
- Five print sizes including XS, S, M, L and XL
- Horizontal and vertical print orientation
- Memory to automatically recall last label and stores up to eight custom labels
- Large display with 2-line x 15 character views (30 characters total)

Ordering Information

Cat. Number	Description	UPC Number
EZL100-KIT	EZL100-kit includes EZL-100 printer, EZ-MP34 and EZ-WN34 tapes, EZL-ADP adapter and batteries	78621095275
EZL100-CASE	Hard case for EZL-100 printer	78621095276
EZL-100	Thermal Transfer Printer	78621090086
EZ-MP34	Metallic Polyester 3/4" Width Tape	78621090081
EZ-WN34	White Nylon 3/4" Width Tape	78621090083
EZL-ADP	Adapter for EZL-100 Printer 9V 1.5A	78621092882

Quality Labels That Stick and Last

- Flexible Nylon Material – excellent for wire and cable wrapping on curved, textured and highly textured surfaces
- Permanent Polyester Material – good for general labeling on flat or textured surfaces
- Prints on heavy duty 1/4", 3/8", 1/2" and 3/4" tapes
- EZ-Peel Labels in an easy-to-load cassette

Please ask your Thomas & Betts sales representative for a complete catalog of quality Thomas & Betts electrical products or visit us at www.tnb.com. For customer service, 1-800-816-7809. For technical questions, call 1-888-862-3289.

© 2005 Thomas & Betts Corporation. All rights reserved. Printed in U.S.A. 03/05/10M GM-EZL100K

Thomas & Betts Corporation
Electrical Division
8155 T&B Boulevard
Memphis, TN 38125
901-252-5000

Thomas & Betts Ltd.
700 Thomas Avenue
Iberville, Québec J2X 2M9
450-347-5318