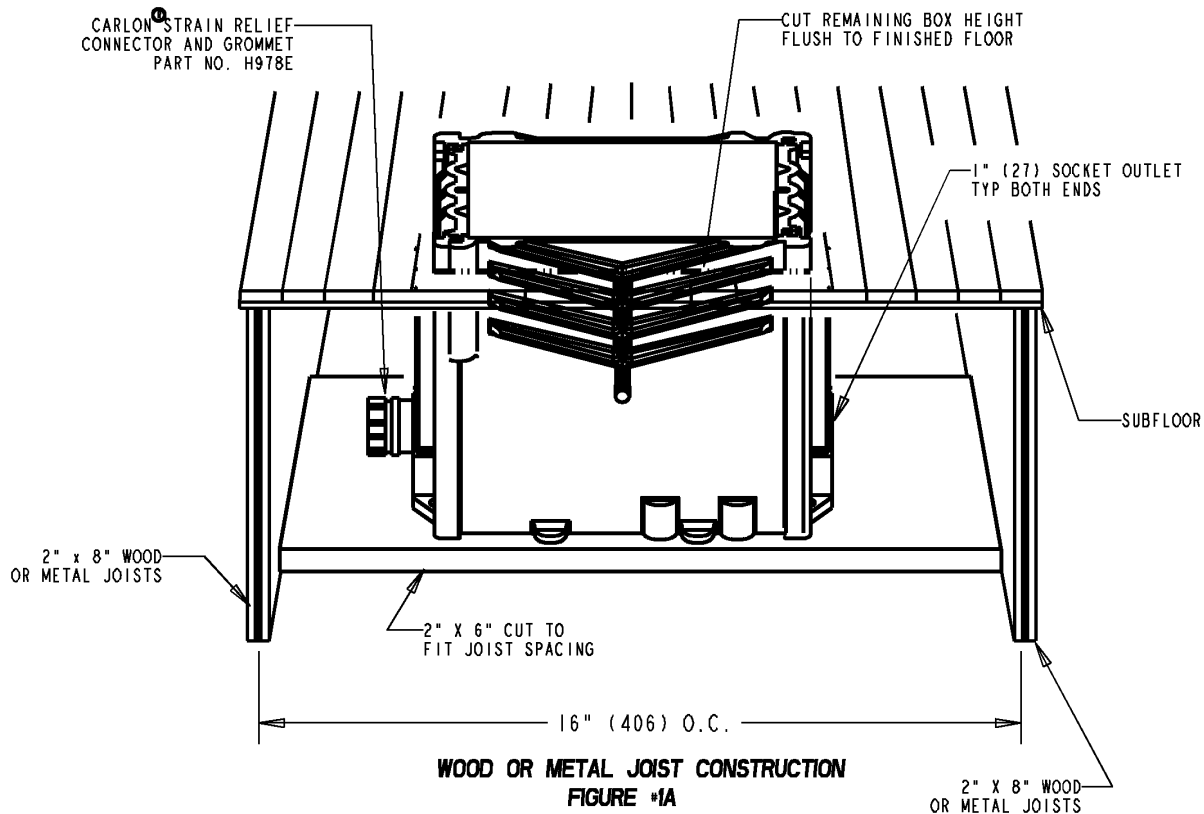


Carlton®



GENERAL NOTES

1. ALL DIMENSIONS ARE FOR REFERENCE ONLY.
2. DIMENSIONS IN BRACKETS [] ARE IN METRIC UNITS.

REVISIONS

** SEE ERN (****) FOR APPROVAL SIGNATURES & RELEASE DATE.
 PROJECT NO: ****

Thomas & Betts
 www.tnb.com

DESCRIPTION:

RECTANGULAR FLOOR BOX INSTRUCTION SHEET

ORIGINAL PROJECT NO / (ERN NO)

/ ()

SHEET NO:

1 OF 2

REV. NO:

D

DRAWING NO:

WSD-AC03134

THIS DRAWING IS INTENDED FOR DESCRIPTIVE PURPOSES ONLY. AND THE RIGHT IS RESERVED TO DEVIATE FROM ANY OF THE DETAILS SHOWN HEREON.
 ©2008 Thomas & Betts - Proprietary. All Rights Reserved

Carlton®

CARLTON® STRAIN RELIEF CONNECTOR AND GROMMET PART NO. H978E

FOR WOOD CONSTRUCTION - (3) 16D NAILS EACH END

FOR METAL CONSTRUCTION - (3) 3" (78) SELF-DRILLING SCREWS EACH END

ROMEX

1" X 3/4" (27 X 21) REDUCER PLUG PART NO. E971D, SUPPLIED WITH FLOOR BOX E976RFB

1" (27) SCREWS

1" (27) SCREWS

ENT

SOLVENT WELD WITH ENT CEMENT

WOOD OR METAL JOIST CONSTRUCTION
FIGURE #1B

FOR WOOD FLOOR APPLICATIONS, USE CARLTON® E976 SERIES COVERS ONLY.

INSTRUCTIONS FOR CARLTON® RECTANGULAR FLOOR BOX PART NO. E976RFB FOR USE IN FRAME CONSTRUCTION

NOTES:

1. INSTALL BOX ON 2" X 6", SLIDE BETWEEN FLOOR JOISTS, MARK OUTLINE OF BOX ON BOTTOM OF SUBFLOOR, MARK CENTER - CUT PROFILE THRU FLOOR TO INSTALL BOX.
2. PLUG ANY UNUSED OUTLET WITH REDUCER PLUG PART NO. E971D, SUPPLIED WITH FLOOR BOX.

GENERAL NOTES

1. ALL DIMENSIONS ARE FOR REFERENCE ONLY.
2. DIMENSIONS IN BRACKETS [] ARE IN METRIC UNITS.

REVISIONS

*** SEE ERN (****) FOR APPROVAL SIGNATURES & RELEASE DATE.
PROJECT NO: ****

Thomas & Betts
www.tnb.com

DESCRIPTION:

**RECTANGULAR FLOOR BOX
INSTRUCTION SHEET**

ORIGINAL PROJECT NO / (ERN NO)

/ ()

SHEET NO:

2 OF 2

REV. NO:

**

DRAWING NO:

WSD-AC03134