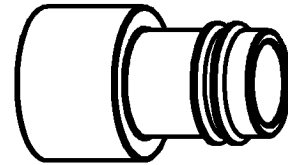
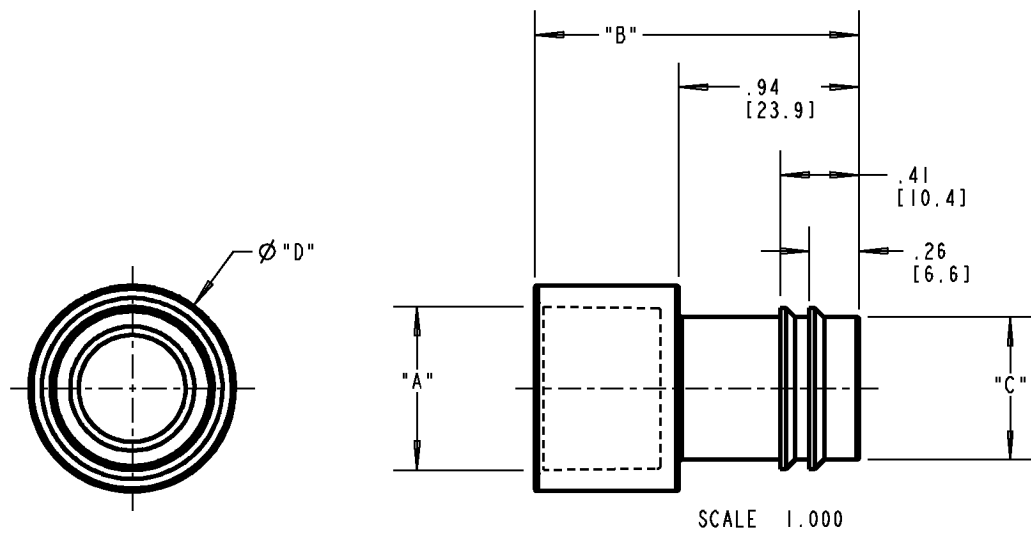


Carlton®



P/N A263D SHOWN
SCALE 0.750



SCALE 1.000

PART NO.	"A" FEMALE SOCKET SIZE	DIM. B	"C" ENT SIZE	Ø D
A263D A263D-CAR A263DCL	1/2"	1.69 [42.9]	.75 [18.9]	1.07 [27.2]
A263E A263E-CAR A263ECL	3/4"	1.76 [44.7]	.95 [24.2]	1.30 [33.0]
A263F	1"	1.92 [48.8]	1.22 [31]	1.59 [40.4]

NOTE:
1. MATERIAL: GRAY PVC

GENERAL NOTES

1. ALL DIMENSIONS ARE FOR REFERENCE ONLY.
2. DIMENSIONS IN BRACKETS [] ARE IN METRIC UNITS.

REVISIONS

*** SEE ERN (****) FOR APPROVAL SIGNATURES & RELEASE DATE.
PROJECT NO: ****

Thomas & Betts
www.tnb.com

DESCRIPTION: **ADAPTERS - MALE ENT TO SOLVENT CEMENT SOCKET**

ORIGINAL PROJECT NO / (ERN NO)
/ ()

SHEET NO:
1 OF 1

REV. NO:
C

DRAWING NO:
WSD-AC04382