

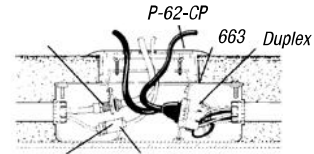
Recessed Service Floor Boxes

663-SC Floor Box

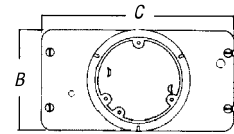
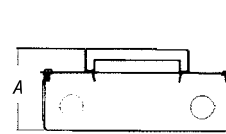
- Multiple service floor box that delivers power, communications and data from standard conduit with no exposed service fittings
- Result: Open office planning flexibility
- Ideal for workstations that require power, communications and data service
- Stamped steel, concrete-tight, semi-adjustable
- Electro-galvanized body and hardware
- Shipped complete with expendable cap to prevent ingress of concrete
- Blank- and duplex-face plates can be mounted at either end of the box
- Does not include duplex faceplate; faceplate is included with P-62-CP and P-60-3B cover plates
- Uses P-62 and P-60 Series covers*



663-SC



Communications Connector



Engineering Data for 663 Series Floor Box



CAT. NO.	DIMENSIONS (IN.)			BEFORE POUR ADJ.	AFTER POUR ADJ.	MAXIMUM CAPACITY (CU. IN.)	CONDUIT KOS	
	A	B	C				SIDES	BOTTOM
663-SC	3 ⁵ / ₈	4 ¹ / ₁₆	8 ³ / ₁₆	None	3/4"	25 per gang 90 Total	(2) 1-1/4"	None (4) 3/4"



CAT. NO.	COVERS AND CARPET PLATES	WIRING DEVICE	STD. CTN.
663-SC	P-62 Series P-60* Series	Duplex and/or Data/Voice	4

*P-62-TAR is required when using P-60 series covers.

Caution: To abandon 663 you must use a P-60 series brass cover plate.

Covers, Carpet Plates and Adjusting Rings for 663 Series

P-60-3B

- Polished brass finish with non-metallic bronze insert
- Plastic insert has one 7/8" cutout and two 1/2" cutouts
- Furnished complete with sealing gasket, 8-32 x 7/16" brass screws and one P-60-Q device plate
- Split cover sections have access notch for screwdriver lift



P-60-3B

P-60-CP

- Polished-brass finish
- P-62-TAR is required when used on 663 floor box
- 5 1/16" outside diameter



P-60-CP

P-62-CP

- High-strength polycarbonate
- Furnished with one 7/8" cutout and two 1/2" cutouts and P-60-Q device plate
- 5 5/8" outside diameter



P-62-CP

P-62-TAR

- Gives 3/4" adjustment when mounted on 663 Floor Box
- Accepts P-60-3B, P-60-CP and all P-60 Series cover plates



P-62-TAR



CAT. NO.	DESCRIPTION	STD. CTN.
P-60-3B*1	Brass Cover Plate — Includes 1 P60Q	4
P-62-CP-AS*2	Polycarbonate Cover and Carpet Plate (charcoal) — Includes 1 P60Q	4
P-62-CP-BRN*2	Polycarbonate Cover and Carpet Plate (brown) — Includes 1 P60Q	4
P-62-CP-G*2	Polycarbonate Cover and Carpet Plate (gold) — Includes 1 P60Q	4
P-60-CP	Carpet Plate (polished brass)	4
P-60-CP-AL	Carpet Plate (aluminum)	4
P-62-TAR	Flange and Adjusting Ring for 663 Box (brass)	4
P-62-TAR-AL	Flange and Adjusting Ring for 663 Box (aluminum)	4
P-60-Q	Duplex Receptacle Plate for 663 Floor Box	4
P-60-QB	Blank Plate for 663 Floor Box	4
P-60-Q-GFCI	GFCI Plate for 663 Floor Box	4

* For use as cover only when box is in service.

1 When not in use, replace P-60-3B Grommet with 697 Plug.

2 When not in use, the P-62-CP Series Cover should be replaced by P-60-CP, P-60 and P-62 TAR Series Covers.

Caution: These covers are not to be used in high traffic areas.

For communications accessories, see **page A-140**.