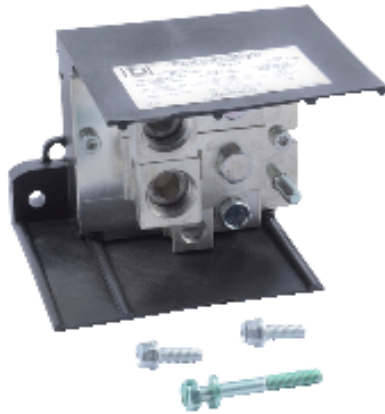


Product availability : Stock - Normally stocked in distribution facility



Complementary

| | |
|---------------------|------------------------------------------------------------|
| AWG gauge | AWG 1/0 1 aluminium/copper 250 kcmil 2 aluminium/copper |
| Product destination | Safety switch |

Environment

| | |
|------------------------|-----------|
| Product certifications | UL listed |
|------------------------|-----------|

Ordering and shipping details

| | |
|-----------------------|---------------------------------|
| Category | 00058 - MISC SWITCH ACCESSORIES |
| Discount Schedule | DE1 |
| GTIN | 00785901331605 |
| Nbr. of units in pkg. | 1 |
| Package weight(Lbs) | 0.9599999999999996 |
| Returnability | Y |
| Country of origin | US |

Offer Sustainability

| | |
|----------------------------------|---------------------------------------------------------------------------------------------------------------------------------------|
| Sustainable offer status | Green Premium product |
| RoHS (date code: YYWW) | Compliant - since 1313 - Schneider Electric declaration of conformity Schneider Electric declaration of conformity |
| REACH | Reference not containing SVHC above the threshold Reference not containing SVHC above the threshold |
| Product environmental profile | Available |
| Product end of life instructions | Need no specific recycling operations |

Contractual warranty

| | |
|-----------------|-----------|
| Warranty period | 18 months |
|-----------------|-----------|
