

CAST-IN FIRESTOP DEVICE PRODUCTS



NOW MOLDED FROM RECYCLED PLASTIC TO MEET MORE STRINGENT ENVIRONMENTAL REQUIREMENTS

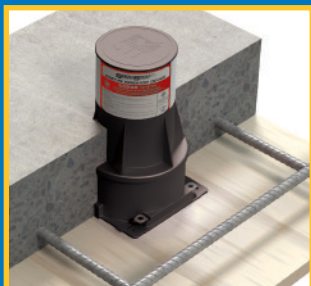
Create Factory-Firestopped Openings as the concrete is poured!

Want to eliminate the need for expensive core drilling as well as the installation of firestop sealants? SpecSeal[®] Cast-In Firestop Devices install on forms or deck in advance of the concrete pour to form factory firestopped openings for plumbing and electrical penetrations.

The devices install easily and quickly. Simply position the sleeves as required, fasten to the form and pour the concrete. The molded plastic body can be cut to adjust to the depth of the pour and is tough enough to resist the rigors of the concrete finishing process.

A variety of accessories permit installation under many common construction conditions including variations in concrete depth and installation over pan decks.

The unique chambered intumescent system expands rapidly in the event of fire to provide up to a three hour fire rating. Compared to conventional cast-in-devices, the fully encapsulated and tamper-proof intumescent system ensures that the protection system cannot be removed or damaged during the penetrant installation process. A resilient gasket system seals against the propagation of smoke and provides additional protection against transient water exposure.



POURED FLOOR WITH WOOD FORMS



CONCRETE OVER STEEL DECK



OPTIONAL METAL DECK KIT

FEATURES & BENEFITS

- Saves money by eliminating core drilling
- Saves time. No firestopping step required
- Provides pre-installed fire and smoke sealing*
- Provides added protection against transient water.*
- Adapts to a wide variety of construction conditions.
- Pipes can be installed from top or bottom
- Integral water and smoke seal
- Environmentally friendly

APPLICATIONS

- 2", 3", 4", and 6" trade size plastic or metallic pipes*
- Insulated metallic pipes*
- Cable bundles*
- Concrete ranging in depth from 2-1/2" (64 mm) to 8" (204 mm)
- Concrete greater than 8" (204 mm) using available extension tubes.
- Concrete over steel deck using available Deck Adapter Kit

NOT INTENDED FOR WALL APPLICATIONS



FIRESTOP DEVICE FOR USE IN THROUGH-PENETRATION FIRESTOP SYSTEMS. SEE UL FIRE RESISTANCE DIRECTORY.

8L98



FBC[™] System Compatible indicates that this product has been tested, and is monitored on an ongoing basis, to assure its chemical compatibility with FlowGuard Gold[®], BlazeMaster[®] and Corzan[®] pipe and fittings. FBC, FlowGuard Gold, BlazeMaster and Corzan are licensed trademarks of The Lubrizol Corporation.

* See UL Systems for installation requirements and specific ratings

PERFORMANCE

SpecSeal® Cast-In Firestop Devices have been successfully tested in accordance with ASTM E814 (ANSI/UL1479) and CAN/ULC-S115 in one, two, and three hour fire-rated floor assemblies. Consult factory for individual system designs and application requirements.

PROPERTIES:	
Shell Construction	Polypropylene
Expansion Begins	320° F (160° C)
Volume Expansion	250X (free expansion)
Shelf Life	None
Standard Height	8 in. (203 mm)

DIMENSIONS:		
ID (in. mm)	Footprint (in. mm)	Min. Steel Deck Opening
2" (51 mm)	5-1/8" x 5-1/8" (131 mm x 131 mm)	3-5/8" (93 mm)
3" (76 mm)	5-3/4" x 5-3/4" (146 mm x 146 mm)	4-1/4" (108 mm)
4" (102 mm)	6-3/4" x 6-3/4" (172 mm x 172 mm)	5-1/4" (134 mm)
6" (152 mm)	9" x 9" (229 mm x 229 mm)	7-1/4" (184 mm)



ORDERING INFORMATION			
UPC #	CATALOG NO.	DESCRIPTION	CASE QUANTITY
Devices for Combustible and Noncombustible Penetrants			
34200	CD200	2" (51 mm) Trade Size Cast-In Firestop Device	6
34300	CD300	3" (76 mm) Trade Size Cast-In Firestop Device	6
34400	CD400	4" (102 mm) Trade Size Cast-In Firestop Device	6
34600	CD600	6" (152 mm) Trade Size Cast-In Firestop Device	6
Extension Tubes			
34202	CD200X	2" (51 mm) Trade Size Extension Tube	6
34302	CD300X	3" (76 mm) Trade Size Extension Tube	6
34402	CD400X	4" (102 mm) Trade Size Extension Tube	6
34602	CD600X	6" (152 mm) Trade Size Extension Tube	6
Deck Adapter Kits			
34203	CD200DK	2" (51 mm) Trade Size Metal Deck Adapter	6
34303	CD300DK	3" (76 mm) Trade Size Metal Deck Adapter	6
34403	CD400DK	4" (102 mm) Trade Size Metal Deck Adapter	6
34603	CD600DK	6" (152 mm) Trade Size Metal Deck Adapter	6
Tub Box Kits			
34204	CD200T	2" (51 mm) Trade Size Tub Box Kit	1

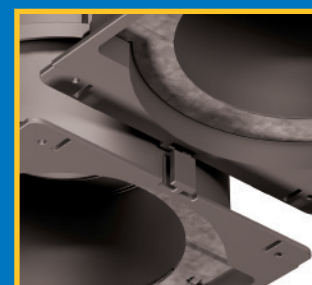
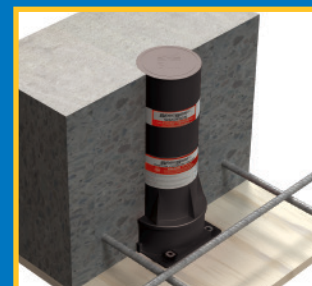
LIMITED WARRANTY: STI warrants that its products will be free of defects for one year from the date of purchase. In the event a product does not conform to this warranty, the sole and exclusive remedy is, at STI's option, replacement of the product or refund of the purchase price. The warranty provided herein shall be void and of no effect in the event that the product is not installed in accordance with STI's published instructions, listed systems and applicable building and safety codes. THIS WARRANTY IS IN LIEU OF ALL OTHER REPRESENTATIONS AND EXPRESSED OR IMPLIED WARRANTIES (including the implied warranties of merchantability or fitness for a particular use) AND UNDER NO CIRCUMSTANCES SHALL STI BE LIABLE FOR ANY DIRECT, INDIRECT, SPECIAL, INCIDENTAL OR CONSEQUENTIAL DAMAGES OR LOSSES, INCLUDING, WITHOUT LIMITATION, ANY LOSS OF REVENUE, PROFIT OR USE. Prior to use, the user shall determine the suitability of the product for its intended use, and the user assumes all risks and liability for subsequent use. No person other than an officer of STI is authorized to bind STI to any other warranty for any product for which this warranty is issued.

MADE IN THE USA – COPYRIGHT © 2014 SPECIFIED TECHNOLOGIES INC.

Specified Technologies Inc.
Somerville, NJ 08876 USA
Toll Free: 800-992-1180
Fax: (908) 526-9623
www.stifirestop.com



EXTENSION TUBES FOR CONCRETE
GREATER THAN 8" (204 MM)



INTERLOCKING DESIGN TO
GROUP MULTIPLE DEVICES



CUTAWAY SHOWS CHAMBERED
INTUMESCENT SYSTEM

SpecSeal® is a registered
trademark of Specified
Technologies Inc.

UL® is a registered trademark of
Underwriters Laboratories, Inc.

Copyright 2014.
All rights reserved

ZSTI3131