



Fluorescent LIGHT COMMERCIAL & RESIDENTIAL

Combining form with the function of advanced fluorescent technology, Simkar delivers a compelling array of energy efficient lighting that offers stylish, yet practical lighting solutions for every room in your home. Check out our innovative lighting designs, latest decorative patterns, and customizable finishes that satisfy every design preference.

Partnering with the ENERGY STAR program, Simkar offers a unique selection of energy-efficient lighting products that add drama — or something more demure — to beautify your home.

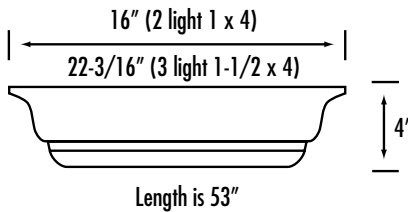




Our "Tight to the Ceiling" Crowns are designed to match the popular crown moldings of ceilings and kitchen cabinetry.



Dimensions



- Crown profile matches cabinetry and ceiling molding.
- Lift and shift diffuser for easy, tool-free cleaning and relamping.
- Shallow, gasketed, flush mount frame.
- Electronic instant start T8 ballast.
- U.L. listed.



Crown Profile

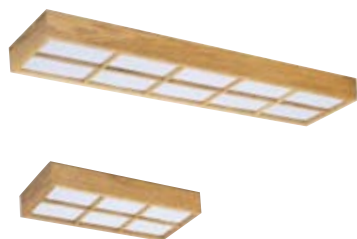
Crown Ordering Information

Series	Finish	Lens Size	Lamps
CRWN	W = White finish	124 = 1 x 4	232 = (2) 32W 48" T8
	O = Oak finish	184 = 1-1/2 x 4	332 = (3) 32W 48" T8

Ballast	Switching	Voltage
B11 = Electronic T8	FOR 3 LAMP UNITS	UNV = 120-277V
B11 RES = Residential Electronic T8	Blank = dual ballasts	120 = 120V
B22 = LPF T8/T12*	3L = (1) 3-lamp ballast	277 = 277V**
	FOR 2 LAMP UNITS	
	Blank = single ballast	
	2/1L = (2) 1-lamp ballasts	

*Dual ballasts required for 3 lamp models

**B11 only

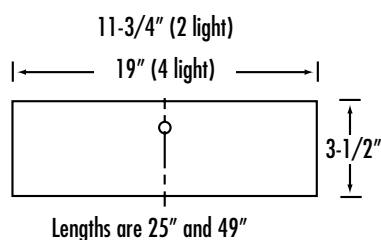


The Oak Grid fixture combines European style with fluorescent efficiency. The solid oak housing and grids allows the fixture to be an attractive addition to many decors. The 2' or 4' versions are suited to high end kitchens, hallways and offices.

- Solid oak frame with integral lattice grid.
- Hand rubbed, medium oak stain.
- Low profile for seamless ceiling line.
- Translucent, milk white acrylic diffuser.
- Flush mount frame.
- U.L. listed.



Dimensions



Oak Grid Ordering Information

Series	Lamps	Ballast	Switching	Voltage
WGCO	217 = (2) 17W 24" T8	B11 = Electronic T8	FOR 4 LAMP UNITS	UNV = 120-277V
	232 = (2) 32W 48" T8	B11 RES = Residential Electronic T8	<i>Blank</i> = dual ballasts	120 = 120V
	417 = (4) 17W 24" T8	B22* = LPF T8/T12	4L = (1) 4-lamp ballast	277 = 277V**
	432 = (4) 32W 48" T8		FOR 2 LAMP UNITS	
			<i>Blank</i> = single ballast	
			2/1L = (2) 1-lamp ballasts	

*Dual ballasts required for 4 lamp models

**B11 Only



WCFO 432



WCFO 232



WCFO 217



Add the warmth of wood with the efficiency of fluorescent lighting with the Oak Drop Dish fixture. The drop design combines with the Oak finish in 2' and 4' lengths to provide a low profile solution that are perfect for kitchens, hallways, foyers, offices and any application where stylish low profile illumination is needed.

- Solid oak frame.
- Hand rubbed, medium oak stain.
- Low profile for seamless ceiling line.
- Translucent, milk white acrylic, drop dish diffuser.
- Flush mount frame.
- U.L. listed.

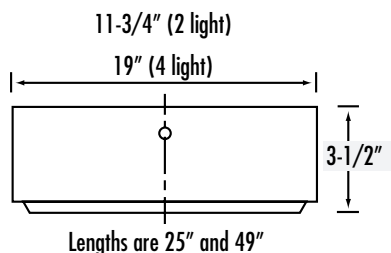
Oak Drop Dish Ordering Information

Series	Lamps	Ballast	Switching	Voltage
WCFO	217 = (2) 17W 24" T8	B11 = Electronic T8	FOR 4 LAMP UNITS	UNV = 120-277V 120 = 120V 277 = 277V**
	232 = (2) 32W 48" T8	B11 RES = Residential Electronic T8	Blank = dual ballasts	
	417 = (4) 17W 24" T8	B22* = LPF T8/T12	4L = (1) 4-lamp ballast	
	432 = (4) 32W 48" T8		FOR 2 LAMP UNITS	
			Blank = single ballast	
			2/1L = (2) 1-lamp ballasts	

*Dual ballasts required for 4 lamp models

**B11 Only

Dimensions





SY 920/WRW

WRCO



Available with a glare-reducing diffuser, Wraparounds can be individually or continuous-row mounted. Non-yellowing acrylic prismatic lens keeps the light bright.



- Shallow 3-1/4" depth is ideal for low ceilings.
- V-shaped acrylic diffuser distributes light evenly and reduces glare.
- Lift and shift lens hinges from either side for easy, tool-free cleaning and relamping.
- Solid oak ends (WRCO) add a decorative touch.
- Die-formed, heavy gauge, steel housing.
- Flush, ceiling mount — stem, individual or continuous row.
- U.L. listed.

Electrical

Fully wired for UNV 120-277V, 50-60Hz operation with thermally protected, automatic resetting Class P, sound rated A ballast as standard unless otherwise specified. UL listed damp location.

Commercial Wraparounds Ordering Information

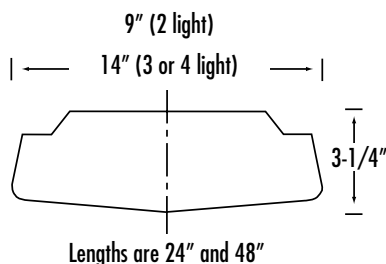
Series	Lamps	Ballast	Switching	Voltage
SY920	217 = (2) 17W 24" T8 232 = (2) 32W 48" T8 332 = (3) 32W 48" T8 417 = (4) 17W 24" T8 432 = (4) 32W 48" T8	B11 = Electronic T8	FOR 3 AND 4 LAMP UNITS <i>Blank</i> = dual ballasts 3L = (1) 3-lamp ballast 4L = (1) 4-lamp ballast	UNV = 120-277V 120 = 120V 277 = 277V

Residential Wraparounds Ordering Information

Series	Lamps	Ballast	Voltage
WRW = White ends WRCO = Oak ends	217 = (2) 17W 24" T8 24 = (2) 34/40W 48" T12 417 = (4) 17W 24" T8 44* = (4) 34/40W 48" T12	B22 = LPF T8/T12 120V	120 = 120V

*Dual ballasts required

Dimensions





With our Low Profile Cloud, you see the light, not the fixture. These all-purpose fixtures hug close to the ceiling, providing soft diffused light.



Low profile clouds provide the same advantages of Full Size Clouds with a shallower housing and diffuser. Low Profile Clouds are available in 4' lengths and are a great solution where mounting restrictions or regulations call for a low profile fixture.

- Only 2/3 the depth of standard clouds.
- Soft, contoured milk white acrylic diffuser for a flawless look.
- Fully luminous fixture for maximum brightness.
- Lift and shift diffuser hinges from either side for easy, tool-free cleaning and relamping.
- Offset, ceiling mount provides subtle uplight.
- Electronic instant start T8 ballast.
- U.L. listed.

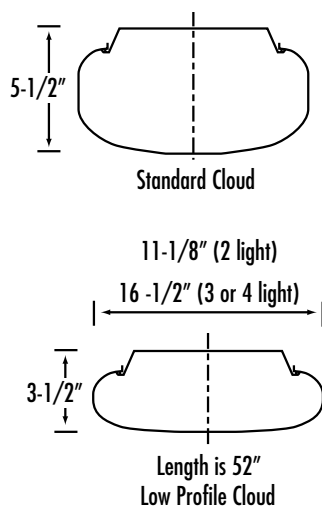
Low Profile Cloud Ordering Information

Series	Lamps	Ballast	Switching	Voltage
SMCLP	232 = (2) 32W 48" T8 332 = (3) 32W 48" T8 432 = (4) 32W 48" T8	B11 = Electronic T8 B11 RES = Residential Electronic T8 B22* = LPF T8/T12 120V	For 3 and 4 lamp units Blank = dual ballasts 3L = (1) 3-lamp ballast 4L = (1) 4-lamp ballast For 2 lamp units Blank = single ballast 2/1L = (2) 1-lamp ballasts	UNV = 120-277V 120 = 120V 277 = 277V**

*Dual ballasts required for 3 and 4 lamp models

**B11 Only

Dimensions





SMC 432



SMC 232



SMC 417



Enjoy the efficiency and brightness of fluorescent lighting in a classic soft look. Full size clouds are available in 2' and 4' lengths with 2,3, or 4 lamps and are perfect for kitchens, hallways, foyers and closets.

- Soft, contoured milk white acrylic diffuser for a flawless look.
- Fully luminous fixture for maximum brightness.
- Lift and shift diffuser hinges from either side for easy, tool-free cleaning and relamping.
- Offset, ceiling mount provides subtle uplight.
- U.L. listed.

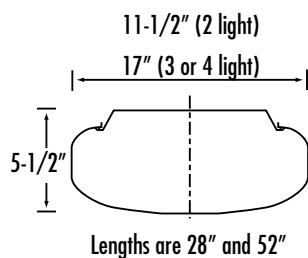
SMC Ordering Information

Series	# Lamps	Lamp Type	Ballast	Switching	Voltage
SMC	2	17 = 17W 24" T8	B11 = Electronic T8	<i>For 3 and 4 lamp units</i>	UNV = 120-277V 120 = 120V 277 = 277V**
	3	32 = 32W 48" T8	B11 RES = Residential Electronic T8	Blank = dual ballasts	
	4		B22* = LPF T8/T12 120V	3L = (1) 3-lamp ballast 4L = (1) 4-lamp ballast	
				<i>For 2 lamp units</i>	
				Blank = single ballast	
				2/1L = (2) 1-lamp ballasts	

*Dual ballasts required for 3 and 4 lamp models

**B11 only

Dimensions





- Contoured, translucent, milk white diffuser for a flawless look.
- Fully luminous fixture for maximum illumination.
- Brass set screws (CPO, CPL) or turn latches (SQC) for easy access.
- Flush, wall or ceiling mount.
- U.L. listed.

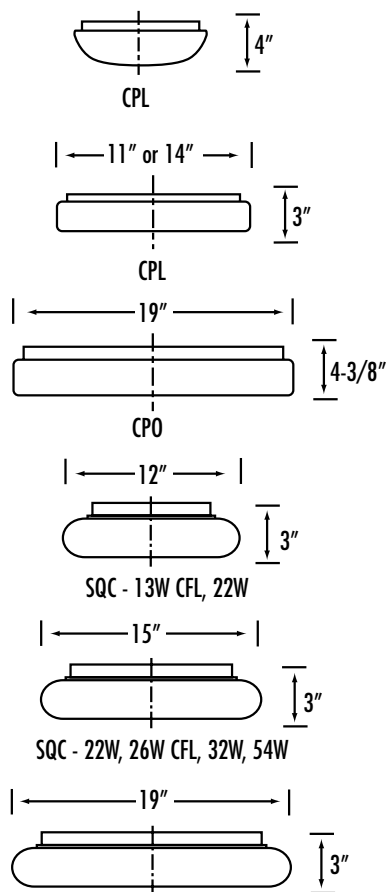
Electrical

Fully wired for 120V, 60Hz operation with thermally protected, automatic resetting Class P, sound rated A ballast as standard unless otherwise specified. UL listed.

The economical choice to illuminate smaller areas like foyers, hallways and closets.



Dimensions



Compact Clouds (drum and round) Ordering Information

Series	Lamps / Housing diameter	Voltage	Option
CPL = Drum CPO = Round	18-11 = 11" (2) 9W CFL 22-11 = 11" 22W Circline 22-14 = 14" 22W Circline 26-14 = 14" (2) 13W CFL 26-19 = 19" (2) 13W CFL 32 = 32W Circline (14" only) 54 = 22W & 32W Circlines (14" only) 72 = 32W & 40W Circlines (19" only)	120 = 120V	L1 = Lamps Included

Compact Clouds (square) Ordering Information

Series	Lamps / Housing size	Voltage	Option
SQC	22-12 = 12" (1) 22W Circline 22-15 = 15" (1) 22W Circline 26-15 = 15" (2) 13W CFL 32-15 = 15" (1) 32W Circline 54-15 = 15" 22W & 32W Circlines 54-19 = 19" 22W & 32W Circlines 72-19 = 19" 32W & 40W Circlines	120 = 120V	L1 = Lamps Included



- Economical lighting — great for utility areas.
- Choice of chrome or white housing.
- Flush, wall or ceiling mount.
- U.L. listed.

Electrical

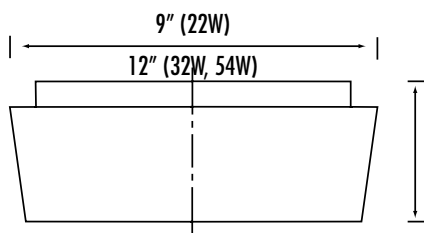
Fully wired for UNV 120V, 50-60Hz operation with thermally protected, automatic resetting Class P, sound rated A ballast as standard unless otherwise specified. UL listed.

Circline Basics Ordering Information

Series	Lamps	Voltage	Housing	Option
C = Bare Bulb PC 555* = Shade	22 = (1) 22W Circline 32 = (1) 32W Circline 54 = 22W & 32W Circlines	120 = 120V	Blank for Chrome W = White	L1 = Lamps Included

*White housing only

Dimensions





- Choice of six decorative end caps to match décor.
- Lift and shift diffuser hinges from either side for easy, tool-free cleaning and relamping.
- Single-piece diffuser and end cap construction eliminates light leaks.
- Offset, ceiling mount provides subtle uplight.
- Electronic instant start T8 ballast.
- Companion sconce available.
- U.L. listed.



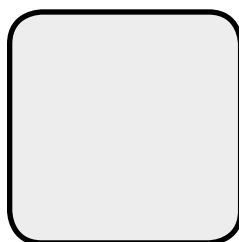
IV-Ivory Marble



AL-Alabaster



WM-White Marble



BW-Bone White

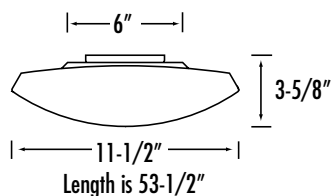


PM-Peach Marble



VG-Verde Green

Dimensions



SAC Ordering Information

Series	End Finish	Lamps	Ballast
SAC	AL = Alabaster	232 = (2) 32W 48" T8	B11 = Electronic T8
	BW = Bone White	332 = (3) 32W 48" T8	B11 RES = Residential Electronic T8
	IV = Ivory Marble		B22* = LPF T8/T12 120V
	PM = Peach Marble		
	WM = White Marble		
	VG = Verde Green		

*Dual ballasts required for 3 lamp model

Switching	Voltage
FOR 3 LAMP UNITS	UNV = 120-277V
Blank = dual ballasts	120 = 120V
3L = (1) 3-lamp ballast	277 = 277V**
FOR 2 LAMP UNITS	
Blank = single ballast	
2/1L = (2) 1-lamp ballasts	

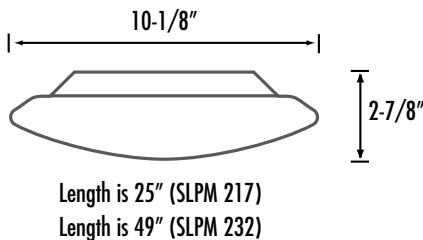
**B11 Only



SLP Low Profile combines a sleek low-profile design, smooth white acrylic lens and die-cast white or brushed metal ends to create a high-tech designer appearance. The unit can be surface mounted or pendant hung with 1/16" aircraft cable, as shown. The **SLP** is ideal for office, residential and light commercial space.



Dimensions



Housing

Die-formed heavy gauge steel with high-gloss, baked white enamel finish over rust inhibiting phosphate coat. Ends are hand finished to a stainless steel look. Inside is grooved to accept acrylic lens and avoid light loss.

Shielding

Smooth milk white formed acrylic.

Electrical

Fully wired for UNV 120-277V, 50-60Hz operation with thermally protected, automatic resetting Class P, sound rated A electronic ballast as standard unless otherwise specified. UL listed.

Mounting

Flush mounted or pendant hung with CACC Suspension Kit. CACC Suspension Kit includes white cord, white canopies and 1/16" aircraft cable. Individual mounting only.

SLP Series Ordering Information

Series	Ends	Lamps	Ballast	Voltage
SLP	M = Brushed metal W = White	217 = (2) 17W 24" T8 232 = (2) 32W 48" T8	B11 = Electronic T8 B22 = LPF T8/T12	UNV = 120-277V 120 = 120V 277 = 277V*

*B11 only

Accessories

CACC(xx)** = Cable Kit, includes 2 cables, mounting hardware, white power cord and canopies; specify length in inches (**48** or **72**)



AVAL Series
(ADA Compliant)



AVSHM Series
Maple finish

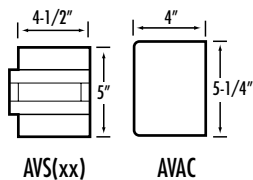


Fixtures are available in a variety of styles and finishes that complement cabinetry, tiling and countertops.



- Translucent faux alabaster or real wood accented fascias.
- Classic shaker design available in 3 popular wood tones.
- Fully enclosed unit for easy cleaning.
- Decorative rounded brass set screws for quick access.
- Flush horizontal wall mount.
- Electronic instant start T8 ballast.
- U.L. listed.

Dimensions



Lengths are 31", 43", 56"

Housing

Die-formed heavy gauge steel with high-gloss, baked white enamel finish over rust inhibiting phosphate coat. Knockouts provided on back.

Diffuser

The AV series include translucent faux alabaster acrylic fascias or white acrylic lenses with real wood, Shaker style fascias to create both up and down light components. Diffusers are attached to the housing with brass set screws for quick access.

Electrical

Fully wired for UNV 120-277V, 50-60Hz operation with thermally protected, automatic resetting Class P, sound rated A ballast as standard unless otherwise specified. UL listed.

Mounting

Flush horizontal wall mount.



Mahogany Finish

The AV series bath bars are a ruggedly constructed, versatile, and attractive solution to many applications. Whether in a bath, hallway, or over a bed, the sleek and stylish designs complement a wide variety of decors. With ADA compliant models



Cherry Finish

available as well as a pull-chain options, the AV series is perfect for use in homes, healthcare, and senior living facilities.

AV Ordering Information

Series	Fascia	Lamps	Ballast	Voltage	Option
AV	AL = Alabaster SHM = Maple SHC = Cherry SHMH = Mahogany	217 = (2) 17W 24" T8 225 = (2) 25W 36" T8 232 = (2) 32W 48" T8	B11 = Electronic T8	UNV = 120-277V 120 = 120V 277 = 277V	PSW = Pull Switch for on/off operation

For additional switching and wiring options, see Architectural Health Care unit on page 76.

ADA Compliant



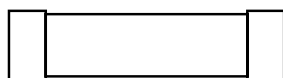
WECN and **WECW** End Cap Bath Bars are versatile, stylish fixtures that can be used in many applications to complete a room. Range of colors, textures, trim options, and sizes to meet all decorating schemes and lighting requirements. Superior fit and finish — no exposed metal work or open joints to trap dust. Energy-efficient T8 lamps with improved color rendering bring out natural colors in fabrics, wall treatments, and skin tones. Quick installation for ceiling or wall applications.



- 8 popular end cap colors and 3 diffuser styles.
- Fully enclosed unit with no exposed hardware for easy cleaning.
- Spring clip attachment for quick access.
- Flush, wall or ceiling mount.
- Electronic T8 instant start ballast.
- ADA compliant.
- Companion sconce available.
- U.L. listed damp location.

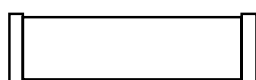
Dimensions

← Nom. 2', 3' or 4' →



WECW 1-1/2" End Caps

← Nom. 2', 3' or 4' →



WECW 1/2" End Caps

4-3/4"



Housing

Die-formed heavy gauge steel with high-gloss, baked white enamel finish over rust inhibiting phosphate coat. Knockouts provided on back.

Diffuser

Consists of a UV acrylic clear ribbed, white ribbed, or smooth white lens, mated to one of a variety of end caps. The end caps are available in wide and narrow versions in a range of colors and textures. Diffuser is secured to housing with spring clips. ADA Compliant.

Electrical

Fully wired for UNV 120-277V, 50-60Hz operation with thermally protected, automatic resetting Class P, sound rated A ballast as standard unless otherwise specified. UL listed.

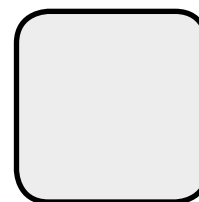
Mounting

Surface mount wall or ceiling, vertical or horizontal.

Available Colors and Textures



AL-Alabaster



BW-Bone White



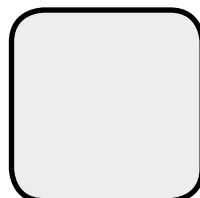
WM-White Marble



IV-Ivory Marble



PM-Peach Marble



SW-Solid White



TO-Tortoise



VG-Verde Green

WEC Ordering Information

Series	Size	Color	Diffuser
WECN = 1/2" end cap	2 = 25.5"	AL = Alabaster	CR = Clear ribbed
WECW = 1 1/2" end cap	3 = 37.5"	BW = Bone White	WR = White ribbed
	4 = 49.5"	IV = Ivory Marble	WS = Smooth white
		PM = Peach Marble	
		SW = Solid White	
		TO = Tortoise	
		VG = Verde Green	
		WM = White Marble	

Trim	Lamps	Ballast	Voltage
B = Brass (WECW only)	217 = (2) 17W 24" T8	B11 = Electronic T8	UNV = 120-277V
C = Chrome (WECW only)	225 = (2) 25W 36" T8	B22 = LPF T8/T12 120V	120 = 120V
N = None	232 = (2) 32W 48" T8		



Housing

Die-formed heavy gauge steel with high-gloss, baked white enamel finish over rust inhibiting phosphate coat.

Shielding

Frameless white acrylic diffuser with D.R. for added durability and even efficient illumination. SMCW model uses brass caps to hold diffuser in place.

Electrical

Fully wired for UNV 120-277V, 50-60Hz operation with thermally protected, automatic resetting Class P, sound rated A ballast as standard unless otherwise specified. UL listed.

Mounting

Wall mounting.

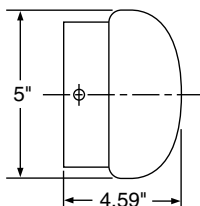


- Soft, contoured milk white acrylic diffuser for a flawless look.
- Fully enclosed unit for easy cleaning.
- Decorative, rounded brass acorn nut for quick access.
- Flush, wall mount.
- Companion ceiling units available (see page 93).

SMCW Ordering Information

Series	Lamps	Ballast	Voltage
SMCW	217 = (2) 17W 24" T8 225 = (2) 25W 36" T8 232 = (2) 32W 48" T8	B11 = Electronic T8 B22 = LPF T8/T12 120V	UNV = 120-277V 120 = 120V

Dimensions



SMCW fixtures are available in 27", 39" and 51" models.



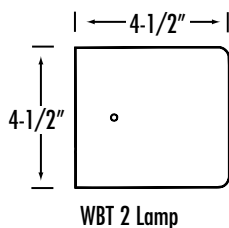
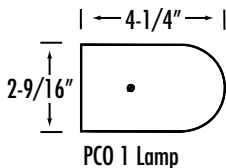
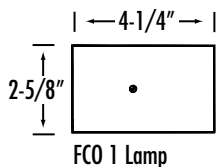
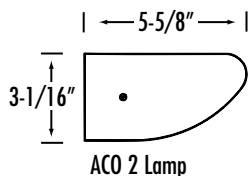
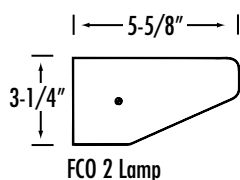
ACO 230



FCO 230



Dimensions



ACO, FCO (2 Lamp), PCO and WBT lengths are 18-1/4", 24-1/4", 36-1/4" and 48-1/4". FCO 1 lamp lengths are 18-3/8", 24-3/8" and 48-3/8".

- Choice of chrome or white ends.
- Wraparound, translucent, milk white acrylic diffuser.
- Fully enclosed unit for easy cleaning.
- Grounded convenience outlet and push switch included. (120V only)
- Flush, wall mount.
- U.L. listed damp location.

Wall Brackets Ordering Information

Series	# Lamps	Lamp Type	Ends
ACO	1	15 = 15W 18" T8	Leave blank for chrome
FCO	2	17 = 17W 12" T8	WE = White ends
PCO*		20 = 20W 24" T12	
WBT		25 = 25W 36" T8	
		30 = 30W 36" T12	
		32 = 32W 48" T8	
		40 = 34/40W 48" T12	

*PCO fixtures are available with 1-lamp only

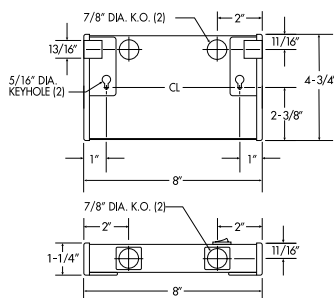
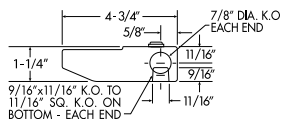
Ballast	Voltage	Options
B11 = Electronic T8	UNV = 120-277V*	Push Switch and Outlet (Standard)
B22 = LPF T8/T12 120V	120 = 120V	CO = Convenience Outlet only
		SW = Switch only
		LA = Less switch and outlet

*UNV only available when unit is less outlet and switch



The line voltage, xenon and halogen task lights provide crisp, bright white light that is fully dimmable. With increased luminous intensity and concentrated, downward focused beam spread, xenon and halogen task lights dramatically illuminate counter tops, workstations and showcases. XLINE units are available in darker, plated finishes to reduce product image reflections on dark, shiny surfaces.

Dimensions



ADDITIONAL LENGTHS ARE 16", 24" AND 33"

XLINE & HLINE Features

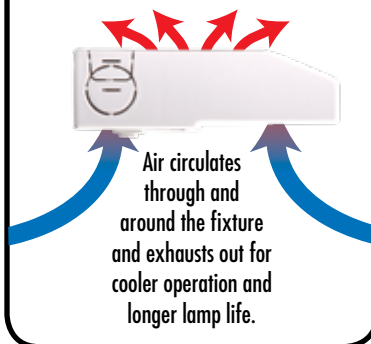
- Produces fully dimmable, bright white light.
- Includes 120V Halogen or longer life Xenon lamp(s).
- Low profile, contoured housing creates a discreetly hidden light source.
- Frosted glass lens for even light distribution.
- Thermally efficient, self-cooling housing extends lamp life.

Available In Plated Finishes

Satin Nickel

Bronze

Cooling Convective Airflow



Air circulates through and around the fixture and exhausts out for cooler operation and longer lamp life.

- Hinged lens held positively by spring clips for tool-less relamping.
- Three-way switch - change from task to mood lighting.
- Three finishes; post painted white and plated bronze and satin nickel (XLINE only).
- U.L. listed.
- Xenon and halogen tasks create crisp bright white light for dramatic illumination.
- Xenon and halogen tasks can be dimmed to set the mood
- Xenon and halogen tasks produce directional, color correct illumination that makes merchandise sparkle.

Lamps Included:

Includes 120V halogen or longer lasting xenon lamp(s).



Xenon & Halogen XLINE & HLINE Series Ordering Information

Catalog No.	Lamps*	Finish	Dimensions			Input Wattage
			H	L	W	
XLINE1WH120V	(1)-20W xenon	White	1-1/4"	8"	4-3/4"	20
XLINE1BZ120V	(1)-20W xenon	Bronze	1-1/4"	8"	4-3/4"	20
XLINE1SN120V	(1)-20W xenon	Satin Nickel	1-1/4"	8"	4-3/4"	20
XLINE2WH120V	(2)-20W xenon	White	1-1/4"	16"	4-3/4"	40
XLINE2BZ120V	(2)-20W xenon	Bronze	1-1/4"	16"	4-3/4"	40
XLINE2SN120V	(2)-20W xenon	Satin Nickel	1-1/4"	16"	4-3/4"	40
XLINE3WH120V	(3)-20W xenon	White	1-1/4"	24"	4-3/4"	60
XLINE3BZ120V	(3)-20W xenon	Bronze	1-1/4"	24"	4-3/4"	60
XLINE3SN120V	(3)-20W xenon	Satin Nickel	1-1/4"	24"	4-3/4"	60
XLINE4WH120V	(4)-20W xenon	White	1-1/4"	33"	4-3/4"	80
XLINE4BZ120V	(4)-20W xenon	Bronze	1-1/4"	33"	4-3/4"	80
XLINE4SN120V	(4)-20W xenon	Satin Nickel	1-1/4"	33"	4-3/4"	80
HLINE1WH120V	(1)-35W halogen	White	1-1/4"	8"	4-3/4"	35
HLINE2WH120V	(2)-35W halogen	White	1-1/4"	16"	4-3/4"	70
HLINE3WH120V	(3)-35W halogen	White	1-1/4"	24"	4-3/4"	105
HLINE4WH120V	(4)-35W halogen	White	1-1/4"	33"	4-3/4"	140

* Lamp(s) Included.

XL20 = 20W, 120V Xenon replacement lamp.

HL35 = 35W, 120V Halogen replacement lamp.



Our multi-purpose Strip Lights are offered in a variety of sizes and lamp configurations for a custom lighting design. Patented, laborsaving, flip-up sockets simplify installation.



CH240TT



Housing

Die-formed heavy gauge steel with high-gloss, baked white enamel finish over rust inhibiting phosphate coat with removable wireway access panel. Ample knockouts provided on side, back and ends. Shipped fully wired and assembled, including socket saddle. Simply flip up socket bar and attach wireway cover with turn fastener provided. Machine installed shunts eliminate loose socket bar connections on electronic strips.

Electrical

Fully wired for UNV 120-277V, 50-60Hz operation with thermally protected, automatic resetting Class P, sound rated A ballast as standard unless otherwise specified. UL listed damp location.

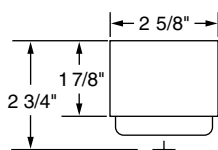
- Patented, flip-up sockets save installation time.
- Fully wired and assembled.
- Combination end plate/joiner easily connect units for continuous row or wire through.
- Die-formed heavy gauge, steel housing.
- Surface or pendant mount; individual, tandem or continuous rows.
- U.L. listed, damp location.



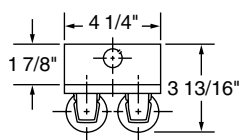
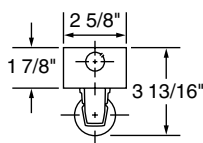
Flip up sockets



Dimensions



CHTT



CH

CH Strip Lights Ordering Information

Series	# Lamps	Lamp Type	Ballast	Voltage
CH	1	14 = 14W 15" T12	B11 = Electronic T8	UNV = 120-277V
	2	15 = 15W 18" T8/T12	B5 = Electronic T12	120 = 120V
	21 = Tandem, two lamps	17 = 17W 24" T8	B14 = Electronic TT	277 = 277V
	22 = Tandem, four lamps	20 = 20W 24" T12	B22 = LPF T8/T12 120V	
		25 = 25W 36" T8		
		30 = 30W 36" T12		
		32 = 32W 48" T8		
		40 = 34/40W 48" T12		
		40TT = 40W 22" TT		

See page 62 for commercial options and accessories



Slimline and High Output Channels are ideal for maximum illumination. Available in 4', 6', and 8' individual lengths as well as continuous row mounting.

Housing

High-gloss, baked white enamel finish on steel housing with removable wireway access panel. Fixture is shipped fully wired and assembled. CHX models have patented (#4,422,132) flip-up socket bar and turn fastener for attaching wireway cover.

Electrical

Fully wired for 120V, 60Hz operation with thermally protected, automatic resetting, Class P, high-power-factor ballast, unless otherwise specified. Sound rated A electronic ballast, except slimline and high-output models. UL listed, damp location.

- Patented, flip-up sockets save installation time.
- Fully wired and assembled.
- Combination end plate/joiner easily connect units for continuous row or wire through.
- Die-formed heavy gauge, steel housing.
- Surface or pendant mount; individual, tandem or continuous rows.
- U.L. listed, damp location.

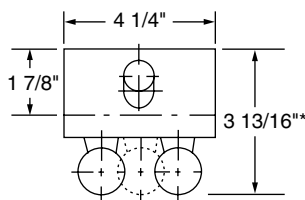
Mounting

Combination end plate/joiner connects units for continuous row or wire through. Surface or pendant mount, high output model must be suspended at least 6" from ceiling for cooler operation.



Flip up sockets

Dimensions



*HO and VHO are 4 5/8" deep

CHX Slimline And High Output Channel Ordering Information

Series	# Lamps	Lamps	Ballast	Voltage
CHX	1 2	48 = 48" 72 = 72" 96 = 96"	B5 = Electronic T12 HOB5 = High Output Electronic T12 B11 = Electronic T8 HOB11 = High Output Electronic T8 HO = High Output	UNV = 120-277V 120 = 120V 277 = 277V



TY 244



FY 124



Troffers are ideal for grid, drywall and plaster ceilings. Choose from a wide selection of ballast, lamp configurations and lenses.



- Shallow 3-3/4" depth fits suspended or plaster ceilings.
- Metal light traps prevent light leak.
- Swing action cam latches for easy, tool-free access.
- Integral door hinges allow door to hinge or latch from either side.
- Built in T-Bar clips securely hold fixture to T-Bar grid.
- Die-formed, heavy gauge, steel housing.
- U.L. listed.

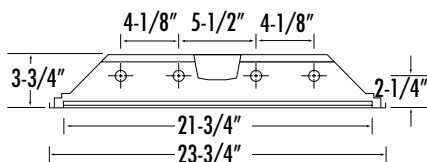
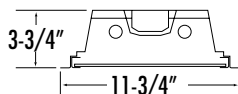
Troffers Ordering Information

Series	Size	Lamps
TY = Lay-In	124 = 1 x 4	232U = (2) 32W U6" T8**
FY = Flange	242 = 2 x 2	232 = (2) 32W 48" T8
	244 = 2 x 4	240 = (2) 34 or 40W 48" T12
		332 = (3) 32W 48" T8
		340 = (3) 34 or 40W 48" T12
		417 = (4) 17W 24" T8
		432 = (4) 32W 48" T8
		440 = (4) 34 or 40W 48" T12

** For 1-5/8", please specify

Options	Ballast	Switching	Voltage
ELS1 = Emergency Lighting (low lumens)	B11 = Electronic T8	<i>For 3 and 4 lamp units</i>	UNV = 120-277V
ELS2 = Emergency Lighting (medium lumens)	B22 = LPF T8/T12 120V	<i>Blank = dual ballasts</i>	120 = 120V
ELS3 = Emergency Lighting (high lumens)		3L = (1) 3-lamp ballast	277 = 277V
		4L = (1) 4-lamp ballast	

Dimensions



Options

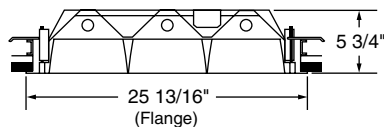
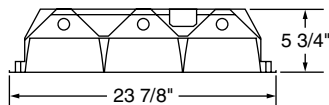
L = Lamps Installed (Specify Lamps) (U-lamp and TT lamps not installed)
FL4 = 3/8", 6' flex with two #18, one ground and two connectors
FL5 = 3/8", 6' flex with three #18, one ground and two connectors



TEP Deep Cell Parabolics are attractive high-efficiency fixtures that produce uniform low brightness in the 60°- 90° zone.



Dimensions



Housing

Die-formed heavy gauge steel with high-gloss, baked white enamel finish over rust inhibiting phosphate coat. Full black reveal and hinged louver for easy relamping. Access plate provided with 2 KOs and ground screw.

Shielding

Low iridescence, anodized, semi-specular aluminum parabolic, nominal 3" deep-cell louver held securely by steel latches. "T" hinges allow access from either side.

Electrical

Fully wired for UNV 120-277V, 50-60Hz operation with thermally protected, automatic resetting Class P, sound rated A ballast as standard unless otherwise specified. UL listed.

Mounting

Optional EC515 Earthquake Clip for lay-in TEP grid ceilings.

TEP Series Ordering Information

Series	Size	# Lamps	Lamp type	Cell Configuration
TEP	124 = 1 x 4	2	32U = 32W U6" T8*	9C = 2x2 (3 rows of 3)
	242 = 2 x 2	3	32 = 32W T8	18C = 2x4 (3 rows of 6)
	244 = 2 x 4	4		32C = 2x4 (4 rows of 8)

* For 1-5/8", please specify

Options	Ballast	Voltage
ELS1 = Emergency Lighting (low lumens) ELS2 = Emergency Lighting (medium lumens) ELS3 = Emergency Lighting (high lumens)	B11 = Electronic T8	UNV = 120-277V 120 = 120V 277 = 277V

Options

L = Lamps Installed (Specify Lamps) (U-lamps not installed)
FL4 = 3/8", 6' flex with two #18, one ground and two connectors
FL5 = 3/8", 6' flex with three #18, one ground and two connectors



Features & Benefits

Corrosion proof, UL 5VA (f1) flame resistant, reinforced thermal set polyester housing

Simple, non-intrusive, external mounting hardware system

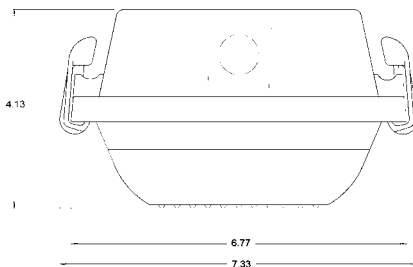
Securely attached, cam latching system that are tamper proof ready

Rugged, impact resistant lenses: UV stabilized polycarbonate or 100% certified High Impact acrylic

Available in 2', 4' and 8' lengths

Dimensions

2 and 3 lamp models



EN2

Ideal for demanding environments where reliability and performance is paramount.

Simkar is proud to announce a family of demanding environment T8 luminaires that will stand up to the forces of wind, water, temperature extremes, dust, salt, and abuse.

The EN2 series is an indoor/outdoor, corrosion proof, enclosed and gasketed fixture that does it all.

Simkar's weatherproof EN2 Series luminaires are a low profile design and comes in 2', 4', and 8' lengths. The 2' and 4' units come in 4" and 6.8" widths and the 8" unit is 6.8" wide.

You have choices of 1 or 2 lamp versions to meet your lighting needs.

The housings are made of custom reinforced, thermal-set polyester that is corrosion resistant and will withstand extreme abuse and neglect.

The horizontally ribbed diffuser lenses were engineered for superior strength, ease of cleaning, and optical uniformity. These tough lenses are available in injection molded, clear, UV stabilized

polycarbonate (2' and 4' units) or 100% certified High Impact acrylic versions (4' and 8' units).

The sealing flanges of the lenses were designed to work in conjunction with our custom formulated foam-in-place, non-reticulated polyurethane gasket. This gasket is a seamless gasket that chemically attaches to the housing and is robotically applied to ensure consistency, accuracy, and reliability.

Our new, innovative latching and mounting hardware make installation and maintenance a breeze.

Housing

Housing to be 1-piece, custom reinforced thermal-set polyester that is corrosion proof and will withstand extreme abuse and neglect. Housing material to be UL 94, 5VA and UL 746C rated f1. Gasket to be a seamless, custom formulated foam-in-place, non-reticulated polyurethane gasket, chemically attached to the housing and robotically applied to ensure consistency, accuracy, and reliability.

Electrical

Fully wired for UNV 120-277V, 50-60Hz operation with thermally protected, automatic resetting Class P, sound rated A ballast as standard unless otherwise specified. UL listed damp location.

Mounting/Latching

Mounting to be surface, ceiling, or wall capable. Optional stainless steel Mounting Brackets (4' and 8' units only) or Swivel Mounting Brackets will eliminate drilling into the housing. Safety strap included. Lens latches to be tool-free UV stabilized polycarbonate, over-center design. Optional Stainless Steel Latches are available.

EN2 Ordering Information

Series Code	Size	# Lamps	Lamp Type
EN2	2 = 2' 4 = 4' 8 = 8'	1 = 1 lamp 2 = 2 lamps 2T = 2 lamps Tandem 4T = 4 lamps Tandem	17T8 = 17 watt T8, 2' unit 32T8 = 32 watt T8, 4' unit or 8' Tandem

Ballast	Voltage
E = Electronic	U1 = Universal 120V – 277V



SL2



SL 65232



Perfect for garages and workshops, our highly versatile Shop Lights are available in All Temperature models to give life to any work area.

SL2 Residential Shop Light

- Magnetic, rapid start ballast.
- 5' cord and plug.
- Hanging hardware included.
- U.L. listed.

SL 65232 All Temperature

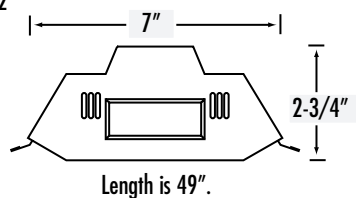
Shop Light

- Works down to 0° F.
- Electronic T8 ballast starts the light instantly.
- Locking sockets hold bulbs securely.
- 5' cord and plug.
- On/off pull switch and hanging hardware included.
- U.L. listed.



Dimensions

SL2



SL 65232

