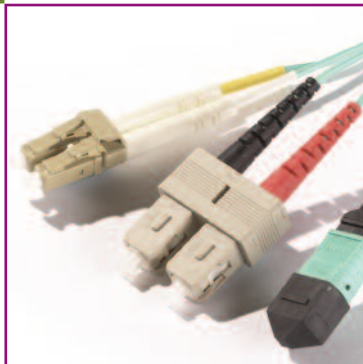
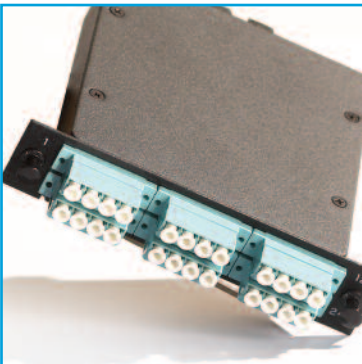


PREMISE CONNECTIVITY SYSTEMS

# Catalog



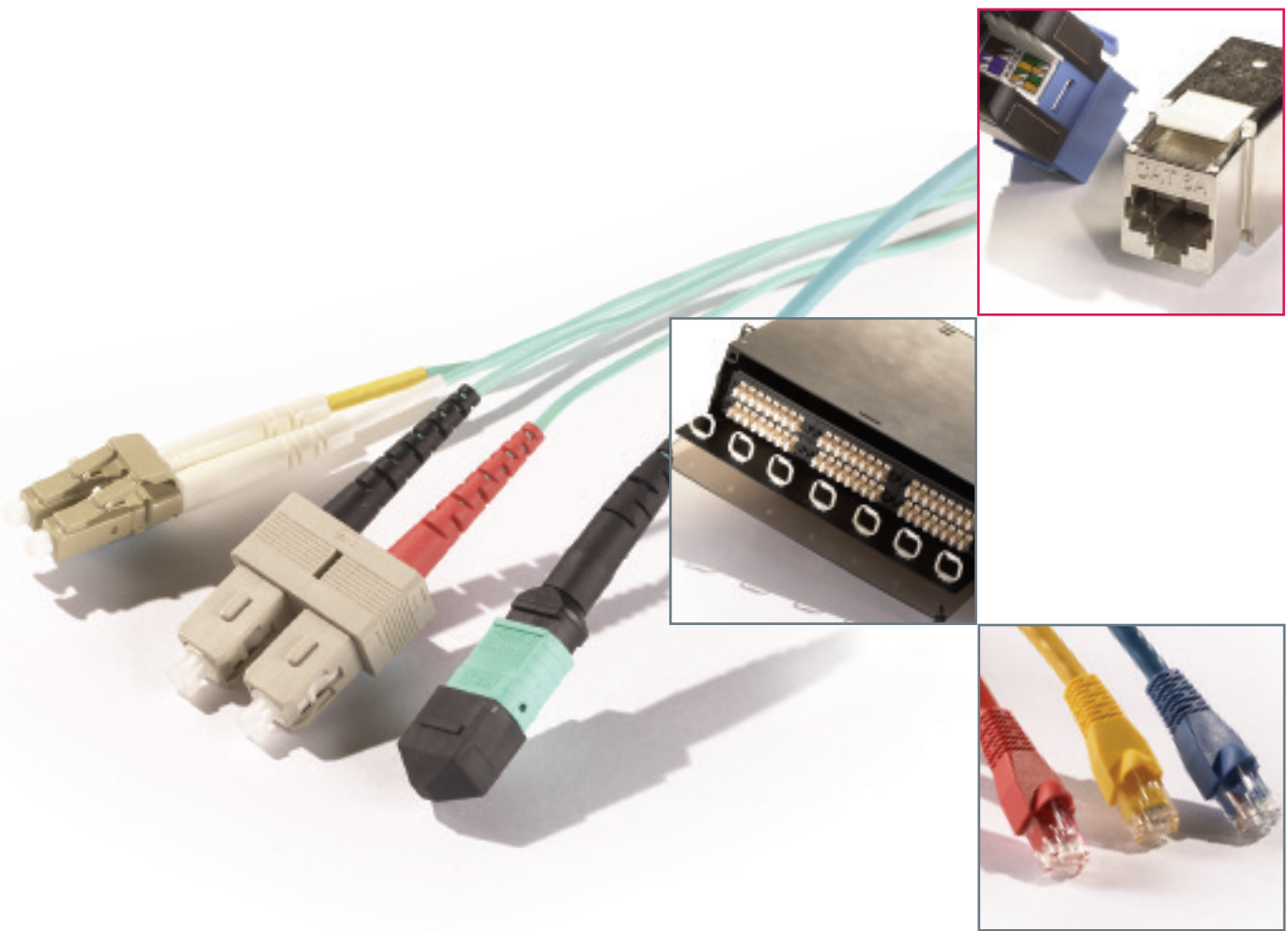
**SIGNAMAX**<sup>TM</sup>  
CONNECTIVITY SYSTEMS

2011

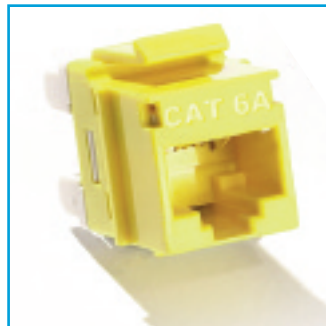
## Table of Contents

<b>A</b>	<b>Work Area Outlet Systems</b>		
	Category 6A 10G MT-Series Keystone Jacks	A1	
	Category 6A 10G Screened Toolless Keystone Jack	A1	
	Category 6 MT-Series Keystone Jacks	A2	
	Category 6 Screened Toolless Keystone Jack	A2	
	Category 5e MT-Series Keystone Jacks	A3	
	Category 5e Screened Toolless Keystone Jack	A3	
	Voice-Grade MT-Series Keystone Jacks	A4	
	KJMT Tool for MT-Series Keystone Jacks	A4	
	Category 6 and Category 5e Feed-Thru Couplers	A5	
	Keystone Jack Accessories	A5	
	Category 6 and Category 5e Industrial-Grade Jacks	A6	
	Keystone Jack DIN-Rial Mounting Modules	A6	
	Keystone Multimedia Modules	A7	
	Single- and Double-Gang Keystone Faceplates	A9	
	106-Type and Decora-Style Faceplates	A14	
	Surface-Mount Faceplate Boxes	A15	
	Modular Furniture Adapters	A15	
	Surface-Mount Multimedia Boxes	A16	
	Industrial-Grade Faceplates and Surface-Mount Boxes	A17	
	International Faceplates	A18	
	Modular Outlet System	A19	
<b>B</b>	<b>Patch Panels and Cross-Connect Systems</b>		
	Category 6A 10G Patch Panels	B1	
	Category 6A 10G Screened Patch Panels	B3	
	Category 6A 10G Pre-Terminated Trunk Assemblies	B4	
	Category 6 Patch Panels	B5	
	Category 5e Patch Panels	B9	
	Gigabit Ethernet Telco Patch Panels	B12	
	Fast Ethernet Telco Patch Panels	B12	
	Category 3 Modular-110 Patch Panels	B13	
	Category 3 Modular-Telco Patch Panels	B13	
	Category 6 and 5e Feed-Thru Patch Panels	B14	
	F-Type and BNC Feed-Thru Patch Panels	B16	
	Field-Configurable Multimedia Panels	B17	
	Category 6A, 6, and 5e 110 Wiring Blocks	B19	
	Category 6 and 5e 110 Wiring Block Kits	B20	
	Category 6 and 5e Rack-Mount 110 Wiring Block Kits	B21	
	Category 6 and 5e 110 Patch Cords	B22	
	Pre-Connectorized 110 Wiring Blocks	B23	
	110 and 66 Termination Tools	B23	
	66 Blocks and Accessories	B24	
<b>C</b>	<b>Patch Cords / Cable / Cable Assemblies</b>		
	Category 6A 10G Patch Cords	C1	
	Category 6 Patch Cords	C2	
	Category 5e Patch Cords	C3	
	Category 6 and 5e 110 Patch Cords	C4	
	Category 6 and 5e Crossover Patch Cords	C5	
	Modular Plugs	C5	
	Modular Crimp Tool	C6	
	Patch Cord Strain Relief Boots	C6	
	Category 6 and 5e 110 Plugs	C6	
	Category 5e Industrial-Grade Plugs	C6	
	Category 6 and 5e Industrial-Grade Patch Cords	C7	
	Category 5e and 3 25-Pair Telco Cable Assemblies	C8	
	Pre-Terminated Copper Trunk Assemblies	C9	
	Category 6A, 6, and 5e Cable	C10	
<b>D</b>	<b>Optical Fiber Systems</b>		
	High-Density Rack-Mount Optical Fiber Enclosures	D1	
	Rack-Mount Optical Fiber Distribution Enclosures	D3	
	Rack-Mount Optical Fiber Splice Enclosures	D4	
	Wall-Mount Optical Fiber Enclosures	D5	
	Rack-Mount Slide-Out Optical Fiber Enclosure	D7	
	Rack-Mount Optical Fiber Panels	D8	
	Splice Trays	D8	
	Optical Fiber Adapter Plates	D9	
	Optical Fiber Adapters and Connectors	D11	
	Optical Fiber High- and Standard-Density Panels	D13	
	Optical Fiber Patch Cords and Pigtails	D14	
	Plug-and-Play Pre-Terminated Fiber Cassettes	D19	
	MTP Optical Fiber Assemblies	D20	
	MTP Fanout Assemblies	D20	
<b>E</b>	<b>Racks and Cable Management</b>		
	Equipment Racks	E1	
	Vertical Cable Management for Equipment Racks	E1	
	Equipment Shelves	E2	
	Hinged Wall-Mount Brackets	E2	
	Patch Cord and Cable Management Panels	E3	
	Cable Management Ring Brackets	E5	
	Velcro Cable Management Ties	E6	
<b>F</b>	<b>Media Converters</b>		
	10/100BaseT/TX to 100BaseFX	F1	
	10/100BaseT/TX to 100BaseFX Single Fiber	F2	
	10/100/1000BaseT/TX to 1000SX/LX	F3	
	Gigabit Ethernet Media Converters	F4	
	100BaseFX Singlemode to Multimode	F5	
	Rack-Mount Media Converter Chassis	F6	
	12-Channel Rack-Mount Media Converters	F7	
	RS-232/422/485 to 10/100BaseT/TX or FX	F8	
	10/100BaseT/TX Ethernet Extender	F9	
	10/100BaseT/TX to 100BaseFX PoE Converter	F10	
	10/100BaseT/TX to 100BaseFX Hardened Converter	F11	
	10/100BaseT/TX to 100BaseFX Single Fiber Hardened Converters	F12	

# KEEPING YOUR WORLD Connected



**SIGNAMAX**<sup>™</sup>  
CONNECTIVITY SYSTEMS



**Bicsi**  
CORPORATE  
MEMBER



ISO 9001 : 2008 Registered

In today's technology-driven environment, staying connected to staff, customers, suppliers, and the world at large are key components of your business. To run a successful enterprise, you need a network that is fast, reliable, and ready to support the growth and change your business will experience. The supplier that can provide you with a network infrastructure that is up to those challenges is Signamax Connectivity Systems.

Our mission is to provide for your total network connectivity needs from end to end — from the server to the user's workstation, in any premise and campus environment from the home, office, the data center, and the factory floor. While other premise connectivity systems suppliers promise end-to-end solutions, Signamax delivers, with both high-performance network solutions and connectivity systems to make them run more effectively.

The Signamax Premise Connectivity System enables you to build a cabling infrastructure engineered to accommodate any of your information transport systems, starting from traditional voice and ending with multi-Gigabit and multimedia applications. Our system is comprised of cabling solutions for your distribution cabling, telecommunications spaces, cross-connects, and work areas, with a wide range of high-value, high-performance copper and optical fiber components, all designed to work together as a system. Whether you are upgrading a category 5e network, building a category 6 platform, or implementing new category 6A systems, Signamax has a broad spectrum of solutions. From the smallest project to the largest, enterprise-wide fiber-to-the-desk

installation, Signamax can provide the scope of network configurations you will need to support your business.

You'll find that our products are designed to install with greater ease, and bring an unparalleled level of performance and reliability to your network. Our systems are designed for the most demanding applications, engineered to meet stringent standards and specifications, and backed by our comprehensive Cabling System Warranty Program. Each product is manufactured to the highest quality standards, and then tested to ensure that it exceeds the industry standards, such as ANSI/TIA, ISO/IEC and IEEE. The strength and integrity of our Premise Connectivity System is backed by the skills and experience of our technical staff.

In addition, Signamax Network Connectivity Systems also provides media conversion products that work in concert with your cabling system. These products are optimized for use in either standard commercial or harsh environment applications. They allow single-mode or multimode fiber optic cable to augment the copper-based cabling plant when distances exceed 100 meters, or when high EMI environments exist.

At Signamax, we're dedicated to making your business run more efficiently, with network solutions backed by long-term performance warranties that provide the peace of mind you want when selecting systems to support your network. So, if you want to keep your world connected, choose the supplier that can make it happen—Signamax Connectivity Systems.





## Category 5e MT-Series High-Density Keystone Jacks



Category 5e Keystone Jacks have been designed to meet the need for today's high-bandwidth applications. Category 5e connectors are slim in profile for the highest-density applications, and are engineered to exceed all ANSI/TIA-568-C.2 category 5e requirements.

Jacks support both T568A and T568B wiring schemes using an easy-to-read color-code wiring label and can be terminated using standard single-position 110 tools or the new KJMT-8600 multipair tool to save termination time and ensure reliable, precise, and consistent terminations. The connectors contact design provides enhanced plug-to-jack connection integrity, protects against damage caused by insertion of 4- or 6-position plugs, and is rated for a minimum of 750 plug insertions providing for the highest level of reliability. Rear 110-type contacts are designed to provide improved conductor retention and ease of termination.

Jacks feature the ability to mount either color-coded icon tabs for service identification or dust covers to protect unused jacks from dust and other contaminants. Jacks are available in nine colors and are supplied with two color-matched tabs and dust covers with icons for voice or data identification.

### Category 5e MT-Series High-Density Keystone Jacks

PART NO.	DESCRIPTION
KJ458MT-C5E	Category 5e MT-Series Keystone Jack, T568A/B Wiring, Light Ivory

Standard color is Light Ivory. For other jack colors add the appropriate color code to P/N



Part Number Example: KJ458MT-C5E-BU  
Category 5e MT-Series Keystone Jack, Blue



### Category 5e Screened Toolless Keystone Jack

Category 5e Screened Jacks are designed for the same high level of performance standards as our unscreened jacks. This slim in profile jack is designed for the highest-density applications, and is engineered to exceed all ANSI/TIA-568-C.2 category 5e requirements. Jacks are fully shielded to optimize protection from EMI. This uniquely designed connector features a toolless termination method for quick and easy installation.

PART NO.	DESCRIPTION
KJS458TL-C5E	Category 5e Screened Toolless Keystone Jack, T568A/B Wiring