

Rittal – The System.

Faster – better – everywhere.

► **Base/plinth
components, front
and rear, 100 mm
Carbon steel, for TS,
TS IT, SE, CM, TP, PC,
IW, TE – TS 8601.200**

Date : May 24, 2018

ENCLOSURES

POWER DISTRIBUTION

CLIMATE CONTROL

IT INFRASTRUCTURE

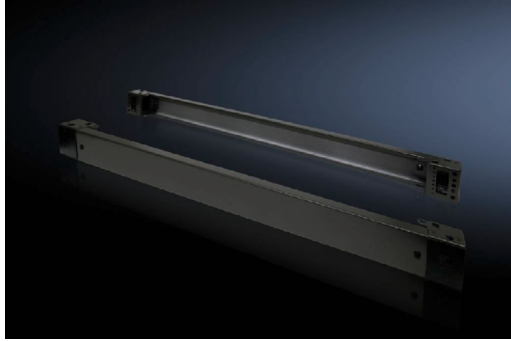
SOFTWARE & SERVICES

FRIEDHELM LOH GROUP



Base/plinth components, front and rear, 100 mm Carbon steel, for TS, TS IT, SE, CM, TP, PC, IW, TE – TS 8601.200

created: 24.05.2018 build on www.rittal.com/us-en



Discontinued article.

This item will be discontinued on: 31.10.2018 |||This item is being replaced by: 8620007

Product description

Version:	Solid
Description:	Base/Plinth component consisting of one trim panel and two pre-assembled corner pieces.
Material:	Base/plinth components: Carbon steel Cover caps: Plastic
Surface finish:	Spray-finished
Color:	RAL 7022 Cover caps: RAL 9005
Supply includes:	2 base/plinth components 4 cover caps Assembly components

Product features

Suitable for:	Enclosure type: TS Enclosure type: SE Enclosure type: CM Enclosure type: TP Enclosure type: PC Enclosure type: IW Enclosure type: TS IT Width: 1200 mm (47 ")
----------------------	--

Dimensions:	Height: 100 mm (3.9 ")
Packaging unit:	2 pc(s).
Weight/packaging unit:	6.62 kg (14.6 lb.)
EAN:	4028177208544
Customs tariff number:	94039010
ETIM 6.0:	EC000721
ETIM 5.0:	EC000721
eCl@ss 8.0/8.1:	27182003
eCl@ss 7.0/7.1:	27182003
eCl@ss 6.0/6.1:	27182003
eCl@ss 5.1/5.1.4:	27182092
Product description (long):	TS Base/plinth component, rear, H: 100 mm, for W: 1200 mm, RAL 7022, sheet steel
Approvals	
Certificates:	EAC