

# Rittal – The System.

Faster – better – everywhere.

## **Comfort Panel – CP 8015.401**

Date : May 24, 2018

ENCLOSURES

POWER DISTRIBUTION

CLIMATE CONTROL

IT INFRASTRUCTURE

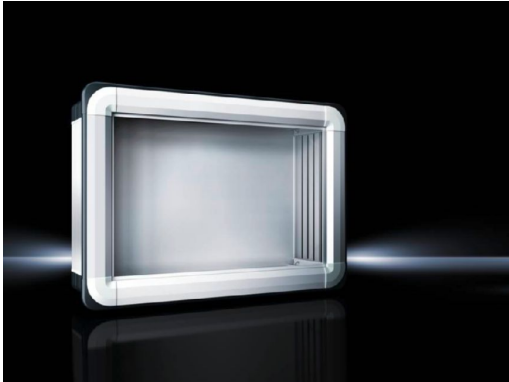
SOFTWARE & SERVICES

FRIEDHELM LOH GROUP



# Comfort Panel – CP 8015.401 - CP141806

created: 24.05.2018 build on [www.rittal.com/us-en](http://www.rittal.com/us-en)



## Product description

<b>Benefits:</b>	Aluminum housing, high thermal conductivity for optimum passive heat dissipation. Low weight coupled with high stability Compatible with all Rittal stand and support arm systems
<b>Material:</b>	Housing: Extruded aluminum section Corner pieces: Die-cast zinc Corner protectors: Plastic
<b>Color:</b>	Housing: Natural anodized. Corner pieces: RAL 7035 Corner protectors: Similar to RAL 7024
<b>Protection category IP to IEC 60 529:</b>	IP 65
<b>Supply includes:</b>	Seals and assembly components for front panels
<b>Note:</b>	The support arm connection may be swapped over by rotating the enclosure 3 mm double-bit lock insert may be exchanged for 41 mm lock inserts, plastic handles and T handles, type C

## Product features

<b>For the configuration of subracks:</b>	Suitable for front panel width: 450 mm (18 ")
<b>Installation depth:</b>	152 mm (6 ")
<b>Suitable for front panels:</b>	with height: 350 mm (14 ") with width: 450 mm (18 ")

**Packaging unit:** 1 pc(s).

---

**Weight/packaging unit:** 11.4 kg (25.1 lb.)

---

**EAN:** 86876

---

## Approvals

---

**Approvals:** UL + C-UL

---