

Rittal – The System.

Faster – better – everywhere.

► Consoles for 3-Part Assembly – TP 6722.500

Date : May 24, 2018

ENCLOSURES

POWER DISTRIBUTION

CLIMATE CONTROL

IT INFRASTRUCTURE

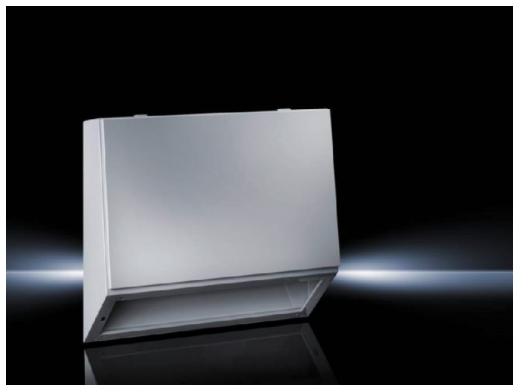
SOFTWARE & SERVICES

FRIEDHELM LOH GROUP



Consoles for 3-Part Assembly – TP 6722.500

created: 24.05.2018 build on www.rittal.com/us-en



Product description

Material: Housing: Carbon steel, 1.5 mm
Door and console lid: Carbon steel, 2.0 mm, all-round foamed-in PU seal

Surface finish: dipcoat-primed, powder-coated on the outside, textured paint

Color: RAL 7035

**Protection category
IP to IEC 60 529:** IP 55

**Protection category
NEMA:** NEMA 12

IK code: IK08

Supply includes: Housing
Cover hinged at bottom, including cover retainer
Open base for individual cable entry

Base material: Carbon steel

Product features

Dimensions: Height: 700 mm (28 ")
Width: 1200 mm (47 ")
Depth: 240 mm (9.4 ")

Packaging unit: 1 pc(s).

Weight/packaging 38 kg (83.8 lb.)

unit:	
EAN:	4028177554283
Customs tariff number:	94032080
ETIM 6.0:	EC000784
ETIM 5.0:	EC000784
eCl@ss 8.0/8.1:	27180504
eCl@ss 7.0/7.1:	27180504
eCl@ss 6.0/6.1:	27180504
eCl@ss 5.1/5.1.4:	27180504
Product description (long):	TP TopConsole system, Pultoberteil for 3-teiligen tobau, WD: 1200x700 mm, Sheet steel
Approvals	
Approvals:	RRR UL + C-UL
Certificates:	IK-Code
Declarations:	Declaration of conformity