

Rittal – The System.

Faster – better – everywhere.

► Component Shelf, Static Installation For 482.6 mm (19") system punching, depth-variable for TS IT, TE – DK 5501.665

Date : May 25, 2018

ENCLOSURES

POWER DISTRIBUTION

CLIMATE CONTROL

IT INFRASTRUCTURE

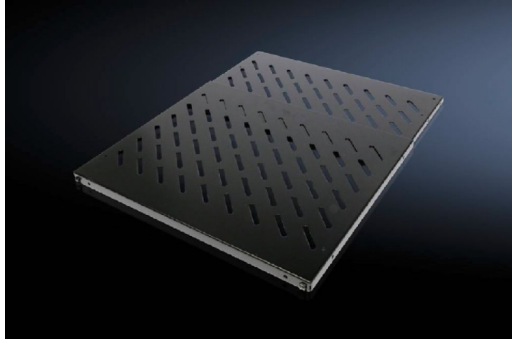
SOFTWARE & SERVICES

FRIEDHELM LOH GROUP



Component Shelf, Static Installation For 482.6 mm (19") system punching, depth-variable for TS IT, TE – DK 5501.665

created: 25.05.2018 build on www.rittal.com/us-en



Product description

Benefits:	Tool-free, time-saving one-person assembly
Applications:	Depth-variable to adapt to individual distances between levels
Material:	Carbon steel
Surface finish:	Spray-finished
Color:	RAL 9005
Supply includes:	Assembly components

Product features

Suitable for:	Enclosure type: TS IT Enclosure type: TE 7000 Enclosure type: TE 8000
Dimensions:	Width: 484 mm (19 ")
Installation options:	482.6 mm (19") L-profile rails, front and rear 482.6 mm (19") mounting frames, front and rear
Distance between levels:	min.: 600 mm (24 ") max.: 900 mm (35 ")

Height units:	0.5 U
Load capacity:	50 kg
Packaging unit:	1 pc(s).
Weight/packaging unit:	4.64 kg (10.2 lb.)
EAN:	4028177679108
Customs tariff number:	73269098
ETIM 6.0:	EC002620
ETIM 5.0:	EC002620
eCl@ss 8.0/8.1:	27189261
eCl@ss 7.0/7.1:	27189261
eCl@ss 6.0/6.1:	27189261
eCl@ss 5.1/5.1.4:	27189218
Product description (long):	DK Component shelf, WxH: 484 mm x 0,5 U, 50 kg, distance between levels: 600-900 mm, depth-variable, RAL 9005