

# Rittal – The System.

Faster – better – everywhere.

## Gland plate for CM, TP – CM 5001.224

Date : May 29, 2018

ENCLOSURES

POWER DISTRIBUTION

CLIMATE CONTROL

IT INFRASTRUCTURE

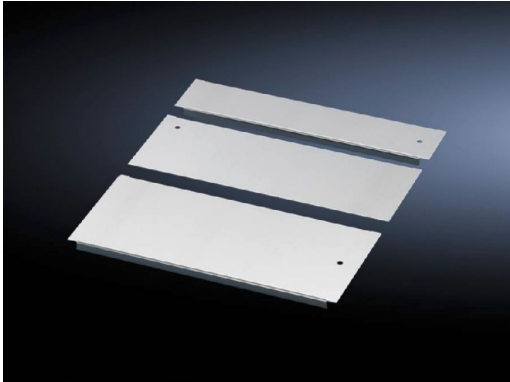
SOFTWARE & SERVICES

FRIEDHELM LOH GROUP



# Gland plate for CM, TP – CM 5001.224

created: 29.05.2018 build on [www.rittal.com/us-en](http://www.rittal.com/us-en)



## Product description

**Description:** Equipotential bonding is provided via assembly components and grounding points.

**Material:** Carbon steel

**Surface finish:** Zinc-plated

**Supply includes:** Assembly components

**Note:** For greater stability and universal cable entry, the base opening is divided in the width for 1000, 1200 and 1600 mm wide enclosures, and is suitable for various configurations. Several base plate modules need to be combined to close off the base completely in the TS-IT

## Product features

**Suitable for:** Enclosure type: TS IT  
Enclosure type: TS  
Enclosure type: CM  
Enclosure type: TP  
Width: 1000 mm (39 ")

**Dimensions:** Depth: 250 mm (9.8 ")

**Packaging unit:** 1 pc(s).

**Weight/packaging unit:** 1.56 kg (3.4 lb.)

**EAN:** 4028177523289

<b>Customs tariff number:</b>	73269098
<b>ETIM 6.0:</b>	EC002620
<b>ETIM 5.0:</b>	EC002620
<b>eCl@ss 8.0/8.1:</b>	27189261
<b>eCl@ss 7.0/7.1:</b>	27189261
<b>eCl@ss 6.0/6.1:</b>	27189261
<b>eCl@ss 5.1/5.1.4:</b>	27189240
<b>Product description (long):</b>	CM Gland plate, for CM, TP, D: 250 mm, for W: 1000 mm