

Rittal – The System.

Faster – better – everywhere.

Gland plate for CM, TP – CM 5001.221

Date : May 24, 2018

ENCLOSURES

POWER DISTRIBUTION

CLIMATE CONTROL

IT INFRASTRUCTURE

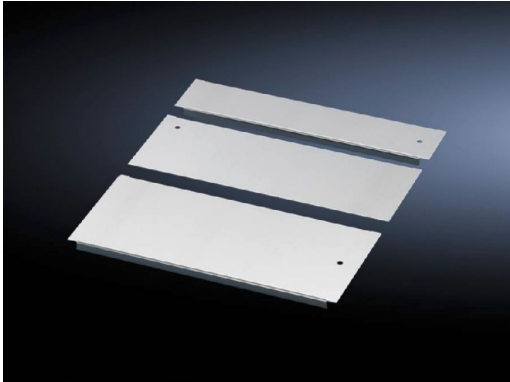
SOFTWARE & SERVICES

FRIEDHELM LOH GROUP



Gland plate for CM, TP – CM 5001.221

created: 24.05.2018 build on www.rittal.com/us-en



Product description

Description: Equipotential bonding is provided via assembly components and grounding points.

Material: Carbon steel

Surface finish: Zinc-plated

Supply includes: Assembly components

Note: For greater stability and universal cable entry, the base opening is divided in the width for 1000, 1200 and 1600 mm wide enclosures, and is suitable for various configurations. Several base plate modules need to be combined to close off the base completely in the TS-IT

Product features

Suitable for: Enclosure type: TS IT
Enclosure type: TS
Enclosure type: CM
Enclosure type: TP
Width: 1200 mm (47 ")

Dimensions: Depth: 150 mm (5.9 ")

Packaging unit: 1 pc(s).

Weight/packaging unit: 1.24 kg (2.7 lb.)

EAN: 4028177523258

Customs tariff number:	73269098
ETIM 6.0:	EC002620
ETIM 5.0:	EC002620
eCl@ss 8.0/8.1:	27189261
eCl@ss 7.0/7.1:	27189261
eCl@ss 6.0/6.1:	27189261
eCl@ss 5.1/5.1.4:	27189240
Product description (long):	CM Gland plate, for CM, TP, D: 150 mm, for W: 1200 mm