

Rittal – The System.

Faster – better – everywhere.

Adjacent door latch – TS 4911.100

Date : May 24, 2018

ENCLOSURES

POWER DISTRIBUTION

CLIMATE CONTROL

IT INFRASTRUCTURE

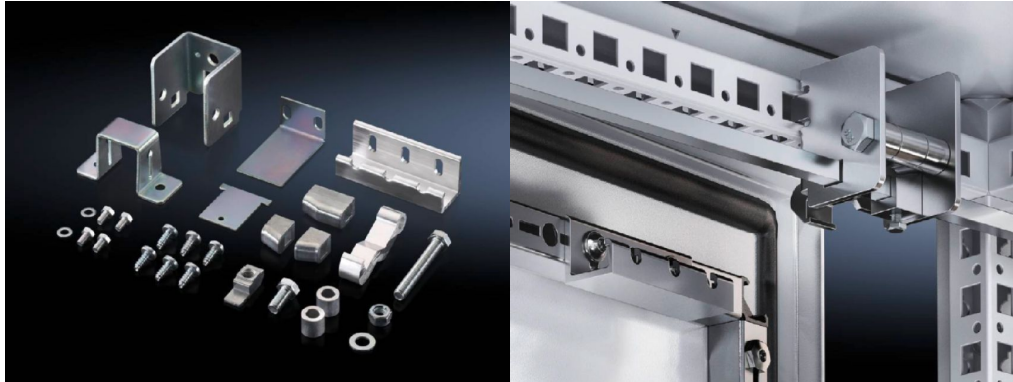
SOFTWARE & SERVICES

FRIEDHELM LOH GROUP



Adjacent door latch – TS 4911.100

created: 24.05.2018 build on www.rittal.com/us-en



Product description

Version: for two-door enclosures

Description: To extend conventional master switch door locks to TS bayed enclosures. Main door must be opened before the other doors can be opened.

Product features

Installation options: Fitted in adjacent enclosure

Packaging unit: 1 pc(s).

Weight/packaging unit: 0.7 kg (1.5 lb.)

EAN: 4028177624924

Customs tariff number: 83015000

ETIM 6.0: EC000327

ETIM 5.0: EC000327

eCl@ss 8.0/8.1: 27409217

eCl@ss 7.0/7.1: 27189290

eCl@ss 6.0/6.1: 27189290

eCl@ss 5.1/5.1.4:

27189255

**Product description
(long):**

TS Adjacent door latch, for door-locking of bayed enclosure combinations, for two-door enclosures
