

Rittal – The System.

Faster – better – everywhere.

Compact light – SZ 4140.110

Date : May 24, 2018

ENCLOSURES

POWER DISTRIBUTION

CLIMATE CONTROL

IT INFRASTRUCTURE

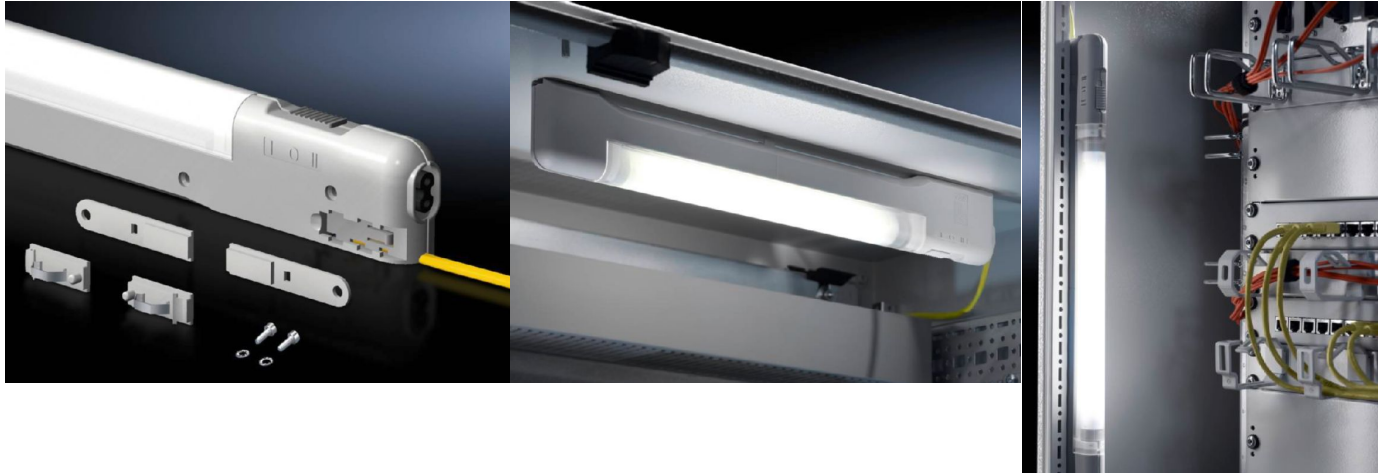
SOFTWARE & SERVICES

FRIEDHELM LOH GROUP



Compact light – SZ 4140.110

created: 24.05.2018 build on www.rittal.com/us-en



Product description

Benefits: Slimmer: Height and depth reduced by around 50%, takes up 75% less volume than conventional lights
Faster: Universal quick-release fastening at TS punchings using clips, screws or powerful magnets (optional). Easy to insert at the sides or rear, fit light and you're done!
Door-operated switch connection can be made using 2-pole connector
Transparent light cover, fluted on inside

Color: Similar to RAL 7035

Protection category IP to IEC 60 529: IP 20

Supply includes: Compact light with clip and screw mounting kits
Light (bulb)
Light cover
Connection cable
Assembly components

Note: Door-operated switch connection can be made using 2-pole connector

Note on Model No.:: Cable deflector across rear possible

Product features

Dimensions: Height: 59 mm (2.3 ")
Width: 455 mm (18 ")
Depth: 24 mm (0.94 ")

Rated operating voltage: 24 V (DC)
Voltage tolerance: $\pm 10 \%$

Installation options:	TS horizontal profile from roof frames: direct TS, SE vertical profile, direct SE profiles to the front and rear of roof frames: direct SE profiles to the side of roof frames: direct AE, CM, TP: with magnet mounting kit AE: with rail for interior installation
Mounting dimensions:	Mounting distance – clip/magnet: 400 mm (16 ") Mounting distance – screw attachment: 475 mm (19 ")
Operating temperature:	Operation (environment): -15°C...+45°C Storage: -20°C...+70°C
Rated current:	with DC (max.): 0.35 A
Power consumption:	8 W
Equipment (electrical):	Ballast: EB Light (bulb): T5 fluorescent lamp Length of connection cable: 3 m (118 ") Cable color: Yellow Switch (type): Integral, on/off/door-operated switch mode
Rated insulation voltage:	Depending on the power supply
Rated impulse withstand voltage, phase to earth:	Depending on the power supply
Rated impulse withstand voltage, phase to phase:	Depending on the power supply
Protection category:	II (total insulation)
Connection options:	Integrated connection cable with open end Door-operated switch
Light – installation type:	Screw fastening Clip fastening Magnetic fastener (accessories)
Cable deflector across rear possible:	yes
Light cover:	yes
Packaging unit:	1 pc(s).
Weight/packaging unit:	0.56 kg (1.2 lb.)
EAN:	4028177550292
Customs tariff	94054095

number:	
ETIM 6.0:	EC000321
ETIM 5.0:	EC000321
eCl@ss 8.0/8.1:	27189241
eCl@ss 7.0/7.1:	27189241
eCl@ss 6.0/6.1:	27189241
eCl@ss 5.1/5.1.4:	27189241
Product description (long):	SZ Compact light, WHD: 455x59x24 mm, 8 W, 24 V DC, Integral on/off/door-operated switch mode, ENEC
Approvals	
Certificates:	EAC
Declarations:	Declaration of conformity