

# Rittal – The System.

Faster – better – everywhere.

## **E-Box EB Carbon steel – EB 1752.500**

Date : May 25, 2018

ENCLOSURES

POWER DISTRIBUTION

CLIMATE CONTROL

IT INFRASTRUCTURE

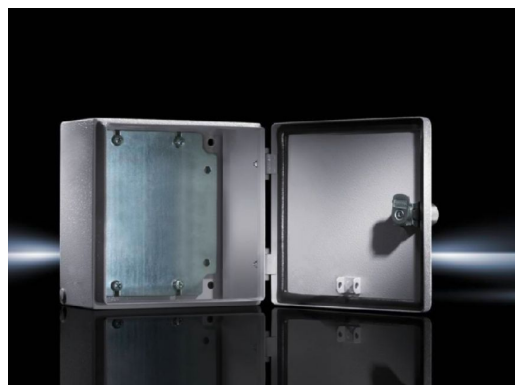
SOFTWARE & SERVICES

FRIEDHELM LOH GROUP



# E-Box EB Carbon steel – EB 1752.500

created: 25.05.2018 build on [www.rittal.com/us-en](http://www.rittal.com/us-en)



## Product description

<b>Material:</b>	Housing and door: Carbon steel, all-round foamed-in PU seal
<b>Surface finish:</b>	Housing and door: Dipcoat primed, powder-coated on the outside, textured paint Mounting plate: Zinc-plated
<b>Color:</b>	RAL 7035
<b>Protection category IP to IEC 60 529:</b>	IP 66
<b>Protection category NEMA:</b>	NEMA 4
<b>Supply includes:</b>	Housing with hinged door 180° hinge Cam lock with 3 mm double-bit insert Mounting plate

## Product features

<b>Dimensions:</b>	Height: 250 mm (9.8 ") Width: 200 mm (7.9 ") Depth: 155 mm (6.1 ")
<b>Material thickness::</b>	Housing: 1.5 mm (0.06 ") Door: 1.5 mm (0.06 ")
<b>Door catch:</b>	right
<b>Packaging unit:</b>	1 pc(s).

---

<b>Weight/packaging unit:</b>	3.6 kg (7.9 lb.)
-------------------------------	------------------

---

<b>EAN:</b>	37462
-------------	-------

---

## Approvals

---

<b>Approvals:</b>	Bureau Veritas CSA Lloyds Register of Shipping Russian Maritime Register of Shipping TÜV UL
-------------------	---

---