

RACK-A-TIERS®



SPECIALTY ELECTRICAL TOOLS

Introducing Over 20 New Items

RACK-A-TIERS®

The ONE TOOL that does it all!



Compact...
Interlocking Pairs



Wire Dispenser...



easy to set up...



portable...



pull wire...



pipe vise...



caddy...



workbench...



saw horse.....



seat...

Versatile • Waterproof • Rustproof • Reliable • Rugged • Fast

ONE SIZE **Rack-A-Tiers** FITS ALL

Up to: 34" / .9m • 330 lb / 150 kg wire reels

RACK-A-TIERS®

ONE TOOL • Many uses • Many configurations



Work bench frame

Versatile



Part #11455

What can Rack-A-Tiers do for you? Big wire, small wire, fast wire, long pipes, short pipes, big pipes, big butts, small butts. EVERYTHING! How? Simpler, smaller, bigger, faster, lighter, easier, waterproof, rust proof, no batteries, no motors...and they float. Tough? You bet. Rack-A-Tiers just plain work!



THE HOOKER PIPE WRENCH ADAPTOR Every RACK-A-TIER needs a Hooker!!!

"Turn your Rack-A-Tiers into a Pipe Vise"
"Light, Fast, Simple, Inexpensive."

Heavy, Oily



Light, Easy



NOTE: REQUIRED PIPE WRENCH (not supplied) is an 18" RIDGID® or equivalent fit.

Part #10455

Do you do industrial pipe work? The HOOKER / Rack-A-Tier combo can replace your tripod for small jobs. Don't have a tripod? With a Ridgid® 18" aluminum pipe wrench and Rack-A-Tiers, the HOOKER will put you in the pipe business. The HOOKER really can handle your rigid pipe work.

Pipe Spring Bender



YOU CAN
COLD BEND

**RIGID PVC PIPE WITHOUT
PIPE COLLAPSE OR FRACTURE**

- NO HEAT GUNS
- NO HEAT BLANKETS
- FEWER PVC FITTINGS

**FASTER AND EASIER
THAN CUTTING AND GLUEING
FACTORY FITTINGS**

HOW?

INSERT THE PIPE SPRING INTO THE PIPE
AND BEND ACROSS YOUR KNEE!!

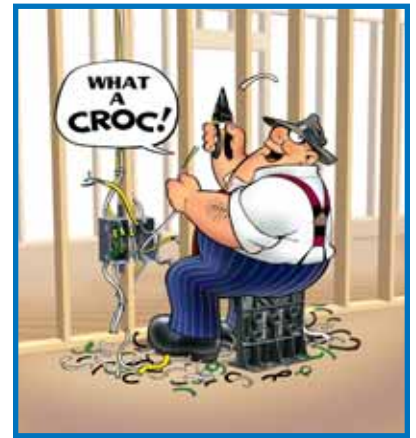
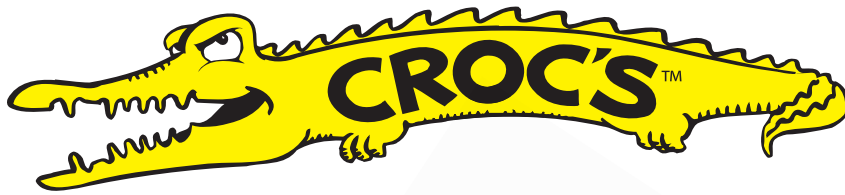
Cold PVC Pipe Bender

- 1/2" Part #58050
- 3/4" Part #58075
- 1" Part #58100

Definition of Cold

NOTE: *Pipe should be 60° F or warmer.* PVC pipe requires slight over bending which will "pop back" a few degrees upon the release of bending pressure.

Hang up that heat gun and can that glue can. Your knee is faster and the Pipe Spring Bender makes it easy to bend 1/2" & 3/4" PVC. Add a little brute force and you can bend 1" too. Believe it!



“Needle Nose Wire Strippers”

CHECK OUT THE FEATURES:

- Needle nose tips
- Romex sheath stripper at the “nose” where it is easier to use inside boxes
- Strips conductor sizes from #10 down to #22 AWG (for telephone wire)
- Large cutting blades for easy general purpose cuts
- Barrel sleeve crimper near the pivot
- Ergonomic “hourglass” shaped handles for comfort & speed



NEW CROCS

Coming Summer of 2007

Featuring glow-in-the-dark handles and a few other improvements.

“OK, we listened to you, and made them better!”

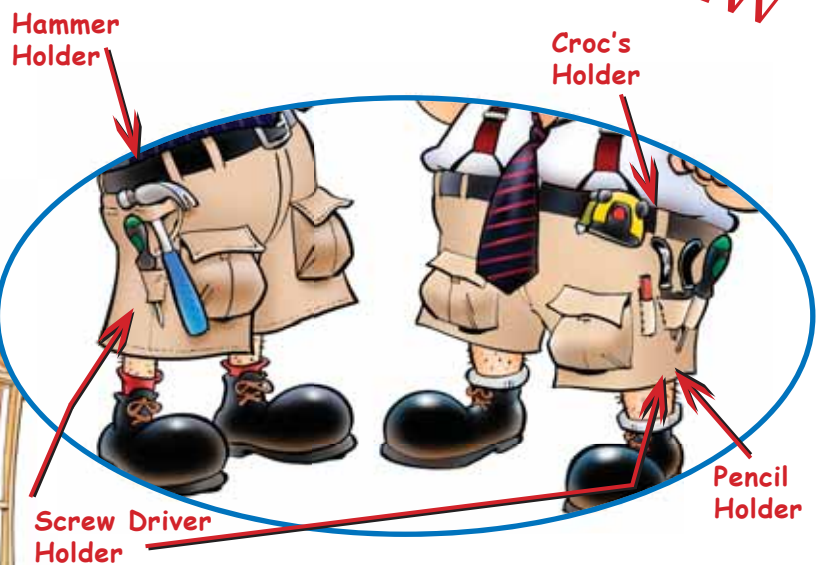
Part # 47000

Croc's! What a beautiful stripper. Check out those curvaceous grips. Try out those needle nose tips. Dual action sheath stripper, crimper, oversized cutters, 22 gauge stripper as well. Croc's rock. Try 'em.

Racky Kackys

Rack-A-Tiers Goes High Fashion with Shorts for Work or Play

NEW



Even has pockets to hold all your nuts and staples.

Sizes 32 - 36

Elastic waist fits before & after lunch

Part # 47043

RACKSY PAD KNEE PADS

Save your knees, you'll need them later!

**NEW IMPLANTS
OLD PRICE**



RACKSY PADS UNDERGO AN **EXTREME MAKEOVER** WITH GEL IMPLANTS

Sturdy and so comfortable, you'll actually wear them. Velcro/elastic straps make these knee pads easy to put on and take off.



Part #66455

So comfortable, you'll never want to get up!

BOOTY PACK Keepin' It Clean

Leave a clean impression, not your dirty tracks with these slip resistant plastic booties and comfy gloves.

NEW



Booty Pack #47099
Not sold separately

Kit Includes

6 pairs of booties • 4 pairs of nitrile gloves • 4 pairs of vinyl gloves • 3-N95 Respirator

BIGG LUGG

Bigg Lugg I

The original cordless drill holder.

Part #43001



NEW

Bigg Lugg II

The next generation for personal tool carriers designed for cordless drills, air-nailers, paint cans, etc. (limit 10 lbs)

Part #43002



Butt Pouch Pocket Pro Pocket Tool Holder

Mini



- Quick to put on, COMFORTABLE
- These tool pouches fit in your pocket
- Large snap loop for attaching to your belt if preferred
- Made of ballistic nylon

**NO BELT
REQUIRED**

Grande



Driller



Mini Part #43015
Grande Part #43095
Driller Part #43110

I know, lots of you won't wear a tool belt. Sometimes you don't need a full load of tools but your pocket's too small. The BUTT POUCH Mini or Grande fills the gap, literally, and it fits in your pocket. Saves wear on your jeans.

RACKY BITS

COLOUR CODED DRIVE BITS



Makes bit selection **FASTER**,
EASIER and more
EFFICIENT!

Magnetic Hex Bits

RED	1/4"	Hex Drive
YELLOW	5/16"	Hex Drive
BLUE	3/8"	Hex Drive
BROWN	7/16"	Hex Drive
BLACK	1/2"	Hex Drive



Size and colour availability as shown.

3", 4" & 6" drive bits

2 9/16" & 6" hex bits

Phillips Bits

BLUE	#2 Phillips
LIGHT BLUE	#1 Phillips

Genuine ROBERTSON® Bits

YELLOW	#0 Square Drive
GREEN	#1 Square Drive
RED	#2 Square Drive
BLACK	#3 Square Drive
ORANGE	#4 Square Drive

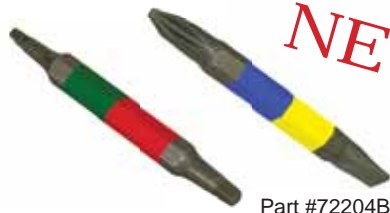


Part #7000 Series

4" Double Ended Bits

#2 Phillips
1/4" slot

#1 square drive,
#2 square drive



Part #72124GR

Part #72204BY

NEW

Magnetizer/Demagnetizer

Magnetizes or demagnetizes
driver bits, tools and small
steel parts instantly!



Part #70988

NEW

COLOUR coding? It's so simple but it works. Racky Bits are easier to use and harder to lose and they make your job easier. If that's not enough, our genuine Robertson® RACKY BITS have hardened tips that fit better and last longer.

Genuine

ROBERTSON® Square drive

SCREW DRIVERS

Part #SD110G
#SD210R
#SD310BK

Great Quality - Great Fit



#1 green robbey

#2 red robbey

#3 black robbey

Robertson®, AKA Square Drive, has proven itself in Canada for 90 years. It is now popping up in the USA. The advantages of Square Drive are well documented and genuine. Why not use genuine Robertson® screw drivers for the best grip, best fit, most torque.



proGrabit Industrial Series

Damaged Screw Remover

- Works on jagged, uneven and rough breaks
- Self centering tip, no walking
- Compatible with quick connect chuck systems
- Easy to use with 3/8" variable speed reversible drill
- Extracts screws up to 4 inches

	Screws	Bolts
Grabit #1	No. 4-no. 6	No. 10 (5mm)
Grabit #2	No. 8-no. 10	1/4" (6mm)



Kit Part #72120

Rounded out screw heads, what a nightmare! Not anymore. Just drill out the damaged screw / bolt with one end of the Grabit, then flip it over and the "grab end" winds out the screw.

Qwik Lok

NEW

Guarantees extension cords and tools are **LOCKED** together. It is the **TOUGHEST, STRONGEST, MOST RELIABLE, 120V - 15A CONNECTOR** on the planet.



Part #97008



Head-LITE Hat



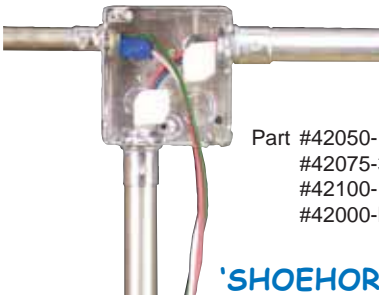
Hands-Free Flashlight

- Powerful bulb illuminates up to 40 ft
- Batteries included
- Bright efficient L.E.D.

Part #16000

The Head-Lite Hat is great for jogging, hiking, walking the dog, etc. Heck, some people are even using them for work. They're the ones who are tired of holding a flashlight in their teeth or under their chin when working in tight places, attics, crawl spaces... All the benefits of a flashlight and a hat in one.

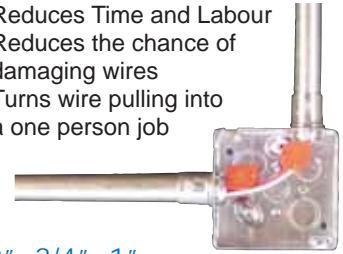
The All American Pull Buddy



Part #42050-1/2"
#42075-3/4"
#42100-1"
#42000-Multi-Pack



- Reduces Time and Labour
- Reduces the chance of damaging wires
- Turns wire pulling into a one person job



'SHOEHORNS FOR YOUR WIRE' Three Sizes Available: 1/2" 3/4" 1"

Two person wire pulls can be costly. So can cut wires and short circuits. The All American Pull Buddy turns one set-of-hands into a 'crew'. Fast, easy to use and reusable. *Why not protect the conductors on all your pulls?*



Knuckle Buster

BEND ALL Cable Bender



Finally,
the Amazing Knuckle Saver from Rack-A-Tiers®

- Captures wire
- Bend inside enclosures to the right or left
- Bend to the front or back
- Your feeders will lie in the lugs

Machined from 6061 aircraft aluminum
Fits a standard 1/2" ratchet.

Fits #3 to 350 MCM conductors



Part #77455

Piece of Cake

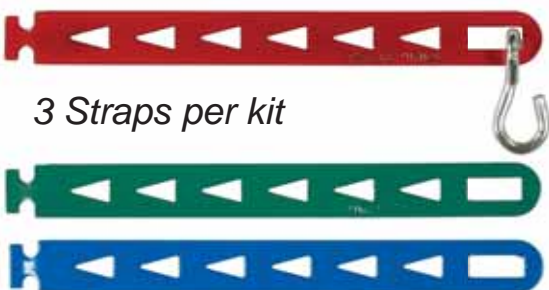


Ever give a meter base a knuckle sandwich? Too bad it was your own. Next time, defend yourself with the Bend All. Perfectly sized for 4/0, it takes the pain out of 200 amp services or sub feeders and conductors like it too. The Bend All makes micro adjustable bends without brutalizing the wire.

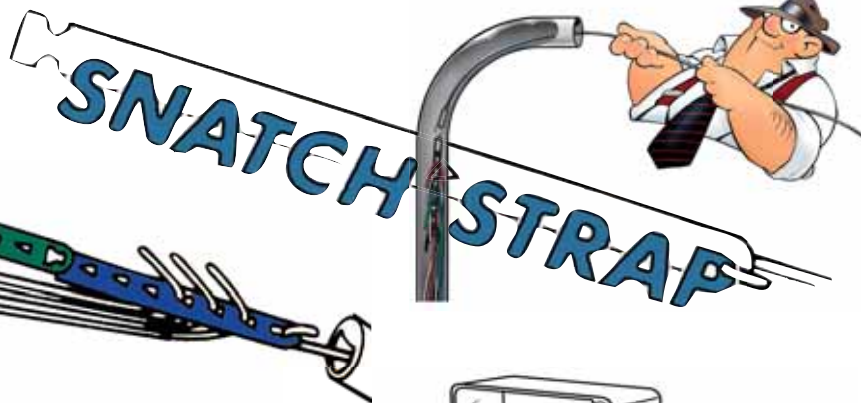
SNATCH STRAP Wire Puller

Fast attachment
for conduit pulls

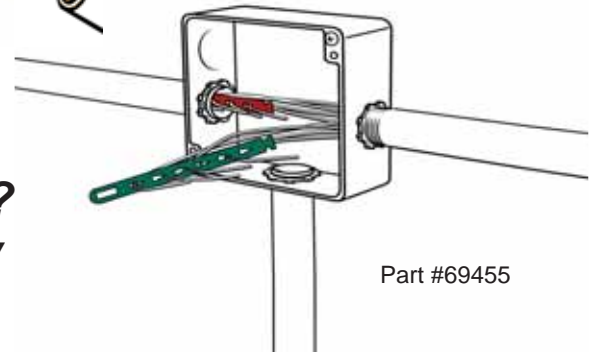
No stripping required
No taping required



3 Straps per kit



1/2" pipe?
90° bends?
Fits Easily



Part #69455

Time is money and when you think about it, a lot of time is spent stripping, taping and untaping wire for fishtape pulls. The SNATCH STRAP gives you back this time. By staggering the wire, you can pull more conductors with less effort. And SNATCH STRAPS can be daisy chained; you can easily drop wire groups at boxes along the pull. Color coded for easy circuit and phase identification.

LB Wire Guide

'SHOE HORN' FOR 2" LB'S

NEW



Features

- For PVC LB fittings & adaptable to most metal LB's
- One man conductor installation
- Faster conductor installation
- Installs in two positions to fit both 'Ends' of the LB



Part #42200

Two hundred amp services (3/0 wire) can be hard on your knuckles. The LB Wire Guide puts the wire in the pipe & leaves the skin on your fingers.



Part #89455

NUT SPINNER

WIRE NUT INSTALLATION TOOL

- Fits most wire nuts (pigtails too)
- Fast, secure wire nut installation without pre-twisting conductors



Fits all these

Do you prefer to twist your nuts or spin your nuts? Twisting is slow and can be painful, especially when carpal tunnel sets in. Why not spin your wire nuts with the NUT SPINNER? Much faster, easier and it really cinches them up.

Super **SPLICER**

TAKES THE TWIST...
OUT OF YOUR WRIST!!!

NEW



**WARP SPEED SPLICING for #14 and #12 wire.
LET YOUR DRILL get CARPAL TUNNEL**

LOAD

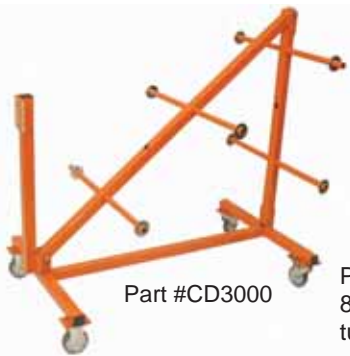
TWIST

Part #11214



Wire Carts & Reel Holders

CABLE DOLLY



The Cable Dolly features 8 - 12" wide spindles to accommodate a wide assortment of reel sizes. Durable locking casters are rated up to 1200 lb.

Open: 48"H x 46"L x 28"W
Weight limit: up to 1200 lb.
Shipping weight: 75 lb.

Part #CD3000-EXT
8 piece spindle extension set with tube connectors. (17" extensions)

Part #CD3000

NEW

CABLE DOLLY Jr.



The Cable Dolly Jr. has all the same great features but only 4 - 12" spindles.

Open: 40"H x 36"L x 28"W
Collapsed: 13"H x 48"L x 28"W
Weight limit: up to 1200 lb.
Shipping weight: 50 lb.

Part #CD3100-EXT
4 piece spindle extension set with tube connectors. (17" extensions)

Part #CD3100



Handy wire guide makes multiple pulls smooth and hassle free.



The Cable Dolly & Cable Dolly Jr. fold flat for easy transportation and storage.



Part #CC2000
Cable Cart

Cable Carts

The Cable Carts feature vertical racks that swing forward for easy loading and front stanchions for additional spools. Both come with interchangeable 1" and 3/4" axles for the front stanchions. The CC2000 can hold up to 30 spools of THHN, and the CC2000D has fewer axles and more space to hold larger spools of data cable. Both carts feature space for plywood work table on top, heavy duty casters, and hooks to hold a ladder.

Part #CC2000D
Cable Cart - Data



Cable Truck & Cable Caddy

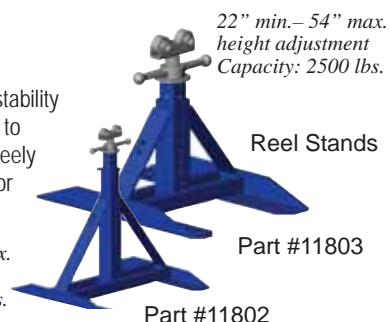
Constructed of rugged 1" steel tubing. The Cable Truck and the Cable Caddy are 43" tall and can accommodate spools up to 16" wide on solid steel 1/2" axles. The Cable Caddy features 6 axle positions for unlimited versatility. The Cable Truck has 4 axle positions and a solid steel plate for transporting material on the job site. Both feature sturdy 7" rubber wheels.

Part #CT1100 Cable Truck
Part #CC1200 Cable Caddy

Jack-A-Tiers

- Wide welded steel base for added stability
- Roller bearings fit in spindle groove to keep spindle in place and moving freely
- 1 3/8" acme threaded cast handle for infinite fine adjustments

22" min. - 54" max.
height adjustment
Capacity: 2500 lbs.



Reel Stand

Part #11803

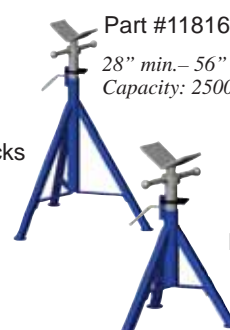
Part #11802

13" min. - 28" max.
height adjustment
Capacity: 2500 lbs.

Part #11816

28" min. - 56" max. height adjustment
Capacity: 2500 lbs.

Trijacks



Part #11815

19" min. - 34" max. height adjustment
Capacity: 2000 lbs.

- Rapid telescope adjustment
- 1 1/4" acme threaded cast handle for infinite fine adjustments

NEW



Quick Action Cable Dispensers

NEW

Stud Mounted Cablestik

- Fits 2 x 4 framing studs
- **Fast**, installs in seconds
- Requires no tools for installation
- Very compact, stores easily
- Adaptable to 2 x 6 with 6" retainer bar (Part #10192)

Part #10191



Hitch Mount

- Adapter and post fit standard balls
- Utilizes Cablestik "stud" arm
- Hitch Mount collar can be attached to hitch balls, bumpers, benches etc.



Hitch Mount
(with Cablestik)

Part #10193



All Parts Sold Separately



Free-standing Frame with extra Cablestik
(and folded unit with bag)

Free Standing Frame

- Integral Cablestik arm
- Accepts additional "stud" arms
- Very stable
- Folds easily to compact dimension
- Carry bag included

Part #10196

REEL-END



"Wire Spool Repair"

Part #17455

- salvages "unusable" wire
- reusable over and over
- money maker

Application - 6 1/2" diameter
plastic spools

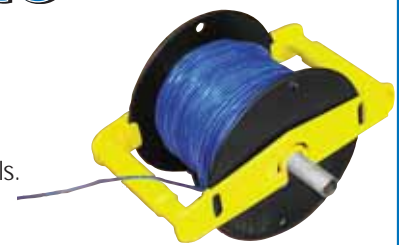
How many broken spools in your shop? A few? A bunch? There's gold in them thar rolls but how do you get at it? Fix them with the Reel-End.

Pays for itself with the first roll saved and it's reusable again and again. The Reel-End fits plastic spools #10 through #18 gauge. A real money maker.

Pull-Rite® 'WIRE BRAKE'

Features:

- Easy to install.
- Clips on each roll in seconds.
- Controls overrun.
- Wire cannot jump off the spools.
- Separates the spools; no rubbing together.
- Fits standard #12 and #14 wire spools.
- Compatible with Rack-A-Tiers and many other wire dispensers.



Part #15455

Application - 6 1/2" diameter
plastic spools

Full new rolls wound to the rim? No longer a problem. Jerky pull with lots of stopping? No more "bird's nesting". Just want one or two conductors from a group? That's all that spins. One person pulls? Easy, and the PULL-RITE is easy to install!

RACK 'N ROLLER

Roll into the Future



Part #12888

Length - 32"

Capacity - 4 to 5 rolls of THHN 10, 12, 14 gauge

Application - 6 1/2" diameter plastic spools

Wire spools run on spring-loaded rollers, no axle.

Advantages:

- Spools can be loaded one at a time without disturbing the others
- Transport, dispense and store wire with no set up or breakdown
- No axles or loose parts
- Rugged USA construction

Stands up for easy storage



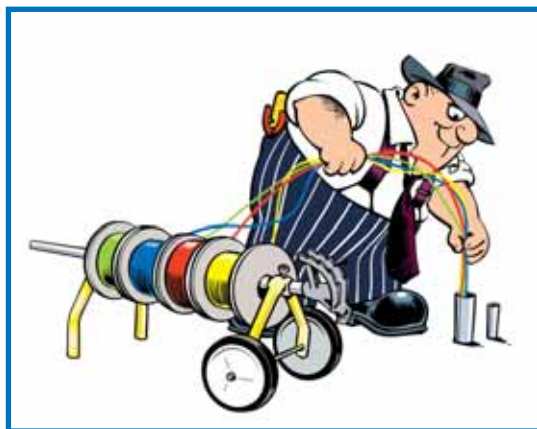
If you use a lot of THHN, this is your unit, especially for a service truck. Easy to tow around, handles for lifting AND it's a piece of cake to change each roll out. Stores and protects your wire spools when not in use and the Rack'N Roller is always ready to rack and roll.



E-Z ROLL WIRE RACK

E-Z ROLL WIRE RACK is the *ultra compact* / collapsible wheeled wire dispenser.

When you're ready to pull wire, wheel the E-Z ROLL into position and dispense wire directly from your pipe bender or 1" EMT.



Part #55455



Features:

- Rigid Steel Construction
- Light-weight Design
- Durable 'Caution Yellow' Finish
- Compact (fits in any job box)
- 150 lb. Load Tested
- Holds Reels up to 18"

Collapsible for easy storage & handling



Most wheeled wire dispensers are too big for your truck and they only hold little wire spools. The E-Z Roll knocks down in seconds and handles reels to 18 inches. Use a conduit bender or scrap of 1" EMT for an axle/handle. The E-Z Roll is big enough to handle 1000' rolls of Romex. Simple, effective.

Wire Tub

Wire Rewinder and Dispenser

Features:

- 360° feed adjusts automatically
- 3-way adjustable centre hub
- Removable top plate has a handle for *rewinding wire*
- Big 24" diameter capacity



Part #18455

MC Cable



Flex

Romex

Top plate on for rewinding



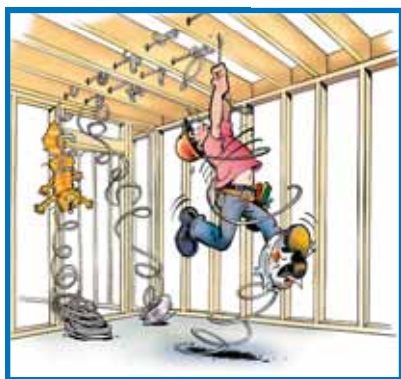
Salvaged wire ready for reinstallation

All coil dispensers dispense but this one **REWINDS** wire as well. Over-runs can be wound back, old wire salvaged and re-installed. And it's fast. No hanging or mounting, the WIRE TUB just sits on the floor. Handles Flex, Romex, MC, etc. Same tough plastic as Rack-A-Tiers. Awesome!

No Wire Spool? No Problem!

THOMAS WHEELER

Wire Spool®



The Usual Way

This easy-to-hang wire dispenser allows fast, twist-free Romex, MC cable or Flex pulling.

- Affordable
- Dependable
- Saves Time
- Eliminates Waste
- No Maintenance
- Collapsible

Part #19455



Hangs from a ladder



A New Way

Most coil dispensers are too big, cumbersome and expensive. Not this one. The Thomas Wheeler knocks down and sets up in seconds, hangs on a 2x4, in the trusses, above tee bar or on a ladder. Light, simple, rugged and it really works. A great value.

CONDUIT LEVEL

Torpedo Level with Laser



- Anodized aluminum construction.
- Super strong magnets attach securely to any ferrous conduit.
- Grooved base aligns itself with the conduit for accurate laser projection.
- Can be attached to any compatible tripod.
- Batteries included.



Part #45630

RACKY LEVEL

NEW

Looking for a pouch level with an advantage?

The Racky Level's base combines powerful magnets with a clearly etched template designed to make *measuring for boxes a snap.*

- Locate centre point on existing box
- Transfer measurement to new box location
- Use your level's template to mark outline of new box

Part #44777

7" Long Level



For All Commercial, Industrial or Residential Installations

The RACK-A-TIERS® Laser Plumb Bob & the CHALK BOB IV enables you to do the lay out *on the ground.*

Great for laying out ceiling lights

Laser Plumb Bob™
- Vertical Dot



Risky



Features:

- Solid brass construction
- Convenient on / off switch
- Factory aligned laser module calibrated to precise 0.15° accuracy
- Magnetic damping for quick stabilization
- Self leveling and aligning (vertically)
- Durable plastic carry case
- Battery included

Part #88455

LASER CHALK BOB IV



The Laser Chalk-Bob IV gives you four reliable reference points:

- Two "chalk" lines on any horizontal or vertical surface (accurate to 1/4" @ 20 feet)
- Two "bob" points for pinpointing on ceiling or floor (accuracy: ±1/8" @ 16')

Features:

- Level method—pendulum system
- Battery life—16 hours
- Line laser wave length: 630–580nm
- Lines blink to indicate out-of-level range

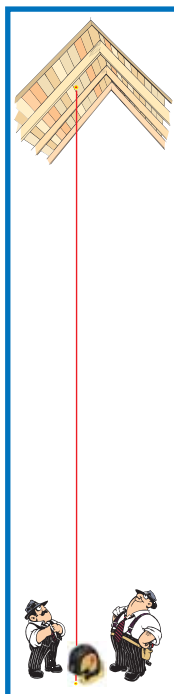
Rotational Base

The LASER CHALK BOB IV can now be rotated through 360° whether on a tripod or directly on the ground while attached to the rotational base.



Part #24402

Fast, Safer



NEW



1. Capture



2. Drive



3. Extract



THE WIRE PYTHON
MAGNETIC WIRE SNAKE

Wire Fishing Made Easy
EVEN works through insulation!!

Flexible leader with magnet head



Hand paddle with powerful magnet



10' Ball Chain included



NEW



Part #MAG6589

Also makes a great stud finder.



CAUTION!!

Extra strong Magnet
Be careful working
with Apprentices!

Any Fiberfish can easily be threaded onto the magnet head. This will help push through dense insulation and guide through fire-block drill holes.

Barracuda Fishtape



Patent # 6416040

A revolution in fishtape design. The first fishtape with an integrated pulling system that works! No more pliers, no more tripping over the case while you pull, no more kinks in your tape from pulling at awkward angles.

- Integrated Cam-Lock™ handle grabs onto the tape and pulls.
- The harder you pull, the tighter the cams grip.
- Let go of the handle and the cams release, allowing you to wind up the slack as you go.
- Available with carbon steel or stainless steel wire.
- Winds and unwinds like a standard fishtape.

BRSS100 -100' Stainless Steel Barracuda
BRSS200 -200' Stainless Steel Barracuda

fish stick

This twistable snake will go anywhere.

- Economical, efficient and snarl-free way to pull or push wire.
- Five piece set contains 5 connectible rods, 24" long and 3/8" diameter.
- Safe, non-conductive flexible PVC plastic v bends easily around obstacles.
- Rod features rust-resistant internal connectors.
- Set includes nylon carrying case.

Part #42524

NEW



Plastic Coated Fiberfish & Glowfish

Our Fiberfish and Glowfish rods with a durable plastic coating offer the same great performance with no risk of splintering or slivering of the fiberglass.

PLASTIC COATED FIBERFISH II 3/16" Diameter orange rods.

The most versatile of the Fiberfish with our new plastic coating process. Perfect for a wide range of installation situations and challenges.

Kits

PCF207 Fiberfish Kit contains: 1 - 6' B/F, 4 - 6' M/F w/ tips
PCF208 3' Fiberfish Kit contains: 1 - 3' B/F, 7 - 3' M/F rods w/ tips
PCF230 "FourPack" contains: 1 - 3' B/F, 3 - 3' M/F, tip, and FishHook in vinyl pouch

Replacement Rods

PCF206 6' Bullnose/Female (B/F) rod
PCF210 6' Male/Female (M/F) rod
PCF214 3' Bullnose/Female (B/F) rod
PCF215 3' Male/Female (M/F) rod



PLASTIC COATED GLOWFISH II 5/32" Diameter luminous rods.

Super flexible glow-in-the-dark rods with our new plastic coating process. Great for tight jobs. The handy clear carry case keeps them constantly "charged" and ready.

Kits

GLF407 Glowfish Kit contains: 1 - 6' B/F, 4 - 6' M/F w/ tips
GLF408 3' Glowfish Kit contains: 1 - 3' B/F, 7 - 3' M/F rods w/ tips

Replacement Rods

GLF403 6' Bullnose/Bullnose (B/B) rod
GLF406 6' Bullnose/Female (B/F) rod
GLF410 6' Male/Female (M/F) rod
GLF414 3' Bullnose/Female (B/F) rod
GLF415 3' Male/Female (M/F) rod



STOP!!!
STOP!!!



FIBERFISH 1/4" Diameter yellow rods.

The original Fiberfish rods. Stiff enough for drop ceilings and flexible enough for insulated walls. Heavy duty rods for tough pulls.



Kits

FIB107 Fiberfish Kit contains: 1 - 6' B/F, 2 - 6' M/F, and 2 - 3' M/F rods w/ tips
FIB108 3' Fiberfish Kit contains: 1 - 3' B/F, 5 - 3' M/F rods w/ tips
FIB130 "FourPack" contains: 1 - 3' B/F, 3 - 3' M/F, tip, and FishHook in vinyl pouch

Replacement Rods

FIB103 6' Bullnose/Female (B/F) rod
FIB113 6' Male/Female (M/F) rod
FIB110 3' Bullnose/Female (B/F) rod

Attachments & Accessories

Attachments

We've re-engineered the attachments to fit both the 3/16" rods and the 5/32" rods. They will still be compatible with all existing parts in the field, and the cost remains the same.

FishHook - Use to retrieve or snag wire & cable.

Directional Tool - Offset bend helps guide the Fiberfish around obstructions in walls.

Magnet Head - Used with Fish Finder or to catch the ball chain inside wall cavities.

Pull Ring - Used to attach multiple wires for larger pulls.

Ball Chain - Attach to Fiberfish for interior wall pulls - can be retrieved through small access hole in wall with magnet or Flex-Fish.

Wisp Head - Use over suspended ceilings - won't catch on T-bars.

Screw Tip - Screw into the end of small communication wires for faster and easier pulls.



Fiberfish Attachments (1/4" rods)

FIB105 FishHook
FIB111 Directional Tool
FIB112 Magnet Head
FIB118 Pull Ring
FIB119 Ball Chain
FIB122 Wisp Head
FIB125 Screw Tip

Universal Attachments for ALL (3/16" rods) AND (5/32" rods)

FIB505 FishHook
FIB511 Directional Tool
FIB512 Magnet Head
FIB518 Pull Ring
FIB519 Ball Chain
FIB522 Wisp Head
FIB525 Screw Tip

Fibersnakes

Fibersnake Fishtapes and Rodders are designed for use in conduit. The reinforced fiberglass core is jacketed with a plastic coating for superior flexibility and durability. Non-conductive, so it's great for conduit with existing wiring. Rust-proof brass tips and fittings.

3/16" FIBERSNAKE

FIBT50 50' Fibersnake
 FIBT100 100' Fibersnake
 FIBT150 150' Fibersnake
 FIBT200 200' Fibersnake
 FIBT250 250' Fibersnake
 FIBT300 300' Fibersnake

1/4" FIBERSNAKE

FIBR200 200' Fibersnake
 FIBR250 250' Fibersnake
 FIBR300 300' Fibersnake
 FIBR350 350' Fibersnake
 FIBR400 400' Fibersnake
 FIBR450 450' Fibersnake
 FIBR500 500' Fibersnake
 FIBR550 550' Fibersnake
 FIBR600 600' Fibersnake

5/16" FIBERSNAKE

Fibersnakes and Replacement Rodders are available in 400'-1000' Fibersnakes Part # FIBL400-FIBL1000 Replacement Rodder Part # RL400-RL1000

RT50 50' Replacement Rodder only
 RT100 100' Replacement Rodder only
 RT150 150' Replacement Rodder only
 RT200 200' Replacement Rodder only
 RT250 250' Replacement Rodder only
 RT300 300' Replacement Rodder only

RR200 200' Replacement Rodder only
 RR250 250' Replacement Rodder only
 RR300 300' Replacement Rodder only
 RR350 350' Replacement Rodder only
 RR400 400' Replacement Rodder only
 RR450 450' Replacement Rodder only
 RR500 500' Replacement Rodder only
 RR550 550' Replacement Rodder only
 RR600 600' Replacement Rodder only

Our 5/16" Fibersnakes are made to order. Returns due to the wrong size being ordered will **NOT** be accepted. Please order carefully.



Fibersnakes are designed to pull fish line or rope. They are not recommended for pulling wire and cable.



Hole In One Cutter

- For cutting round holes in ceilings, walls and floors, up to 10 1/4" diameter.
- A transparent cover attached to catch dust and debris.
- Two blades in each package; one for metal sheets, one for sheetrock, wood and plastic.
- Blades are made out of high speed steel or tungsten steel.

Part #LC-1025

Super Wrist Magnet

- Holds any steel parts
- Comfortable to wear all day
- Made of rugged 2 mil neoprene
- Waterproof
- Adjustable band fits virtually any wrist size

Part #WM396



Attachment Kit

Contains: FishHook, Directional Tool, Magnet Head, Pull Ring, Ball Chain, and 2 replacements tips. Stored in convenient vinyl pouch.



FIB120 Fiberfish Attachment Kit (1/4" rods)
 FIB520 Universal Attachment Kit for ALL (3/16" rods) & (5/32" rods)

Master Attachment Kit

Contains same as above plus: Wisp Head, Screw Tip, Flex-Fish (FIB221).



FIB140 Fiberfish Master Attachment Kit (1/4" rods)
 FIB540 Universal Master Attachment Kit for ALL (3/16" rods) & (5/32" rods)

Contractor Packs

Installer Pack

Fiberfish II Kit; 1/2"x72" Auger Piranhabit; 3/8"x72" HSS Piranhabit; 20' Fiberglass Telepole; Attachment Kit; Carry Case.

Part #CON100 Installer Kit



Contractor Pack

Fiberfish II Kit; 1/2"x72" Auger Piranhabit; 3/8"x72" HSS Piranhabit; 20' Fiberglass Telepole; Attachment Kit; Wisp Head; Flex Fish; Steering Guide; 1" Auger Bit; Carry Case.

Part #CON200 Contractor Pack



Piranhabits

Piranhabits have 3/16" flexible shafts so they can bend while rotating. This allows drilling inside wall cavities, through box cut-outs or other small openings.

High Speed Steel

Superior quality M-2 High Speed Steel drill bit, welded to a flexible shaft. Cuts both metal and wood. No need to worry about hidden nails or metal studs when drilling.

Now available in 24" & 36" lengths!



FLX1424	1/4"X24" HSS Flexbit	FLX3848	3/8"X48" HSS Flexbit
FLX1436	1/4"X36" HSS Flexbit	FLX3854	3/8"X54" HSS Flexbit
FLX1448	1/4"X48" HSS Flexbit	FLX3872	3/8"X72" HSS Flexbit
FLX1454	1/4"X54" HSS Flexbit	FLX1224	1/2"X24" HSS Flexbit
FLX1472	1/4"X72" HSS Flexbit	FLX1236	1/2"X36" HSS Flexbit
FLX3824	3/8"X24" HSS Flexbit	FLX1248	1/2"X48" HSS Flexbit
FLX3836	3/8"X36" HSS Flexbit	FLX1254	1/2"X54" HSS Flexbit
		FLX1272	1/2"X72" HSS Flexbit

Self Feed Auger

Fast and aggressive self feed auger bits, welded to a flexible shaft. Cuts clean holes. Crossbored at both ends for easy wire pulling. Use for wood only.



AUG3824	3/8"X24" Auger flexbit	AUG91624	9/16"X24" Auger flexbit
AUG3836	3/8"X36" Auger flexbit	AUG91636	9/16"X36" Auger flexbit
AUG3848	3/8"X48" Auger flexbit	AUG91648	9/16"X48" Auger flexbit
AUG3854	3/8"X54" Auger flexbit	AUG91654	9/16"X54" Auger flexbit
AUG3872	3/8"X72" Auger flexbit	AUG91672	9/16"X72" Auger flexbit
AUG1224	1/2"X24" Auger flexbit	AUG3424	3/4"X24" Auger flexbit
AUG1236	1/2"X36" Auger flexbit	AUG3436	3/4"X36" Auger flexbit
AUG1248	1/2"X48" Auger flexbit	AUG3448	3/4"X48" Auger flexbit
AUG1254	1/2"X54" Auger flexbit	AUG3454	3/4"X54" Auger flexbit
AUG1272	1/2"X72" Auger flexbit	AUG3472	3/4"X72" Auger flexbit

Guide Tool

The Steering Guide is recommended for superior control of all the Piranhabits.

Allows the piranah bit to bend for drilling from outside the wall cavity.



Part #FIB-GUD



Bellhanger's and Durabits have 1/4" shafts for extra rigidity and strength.

Bellhanger's Bits & Durabits

BELLHANGER'S BITS

Our Bellhanger's bits are M2 high speed steel jobber bits welded to a 1/4" hardened steel shaft. 118 degree point provides a more gradual breakthrough. Specially designed for drilling through steel plate as well as wood. Slow spiral design improves bit self cleaning and eases pull-back. Crossbore in bit allows wire pulling.

BELL1412	1/4"X12" Bellhanger's Bit
BELL1418	1/4"X18" Bellhanger's Bit
BELL1424	1/4"X24" Bellhanger's Bit
BELL1436	1/4"X36" Bellhanger's Bit
BELL3812	3/8"X12" Bellhanger's Bit
BELL3818	3/8"X18" Bellhanger's Bit
BELL3824	3/8"X24" Bellhanger's Bit
BELL3836	3/8"X36" Bellhanger's Bit
BELL1212	1/2"X12" Bellhanger's Bit
BELL1218	1/2"X18" Bellhanger's Bit
BELL1224	1/2"X24" Bellhanger's Bit
BELL1236	1/2"X36" Bellhanger's Bit
BELL5812	5/8"X12" Bellhanger's Bit
BELL5818	5/8"X18" Bellhanger's Bit
BELL5824	5/8"X24" Bellhanger's Bit
BELL5836	5/8"X36" Bellhanger's Bit



DURABITS

Durabits are rugged self feed wood auger drill bits made from high quality carbon steel, provides fast, accurate and smooth cutting. The bit is designed from a single flute and single cutter welded to a 1/4" hardened steel shaft. Crossbored through shaft to allow wire pulling.



DURA3812	3/8"X12" Dura-Bit	DURA3812	3/8"X12" Dura-Bit
DURA3824	3/8"X24" Dura-Bit	DURA3824	3/8"X24" Dura-Bit
DURA3836	3/8"X36" Dura-Bit	DURA3836	3/8"X36" Dura-Bit
DURA3848	3/8"X48" Dura-Bit	DURA3848	3/8"X48" Dura-Bit
DURA3854	3/8"X54" Dura-Bit	DURA3854	3/8"X54" Dura-Bit
DURA3872	3/8"X72" Dura-Bit	DURA3872	3/8"X72" Dura-Bit
DURA1212	1/2"X12" Dura-Bit	DURA1212	1/2"X12" Dura-Bit
DURA1224	1/2"X24" Dura-Bit	DURA1224	1/2"X24" Dura-Bit
DURA1236	1/2"X36" Dura-Bit	DURA1236	1/2"X36" Dura-Bit
DURA1248	1/2"X48" Dura-Bit	DURA1248	1/2"X48" Dura-Bit
DURA1254	1/2"X54" Dura-Bit	DURA1254	1/2"X54" Dura-Bit
DURA1272	1/2"X72" Dura-Bit	DURA1272	1/2"X72" Dura-Bit
DURA3412	3/4"X12" Dura Bit	DURA3412	3/4"X12" Dura Bit
DURA3424	3/4"X24" Dura-Bit	DURA3424	3/4"X24" Dura-Bit
DURA3436	3/4"X36" Dura-Bit	DURA3436	3/4"X36" Dura-Bit
DURA3448	3/4"X48" Dura-Bit	DURA3448	3/4"X48" Dura-Bit
DURA3454	3/4"X54" Dura-Bit	DURA3454	3/4"X54" Dura-Bit
DURA3472	3/4"X72" Dura-Bit	DURA3472	3/4"X72" Dura-Bit
DURA112	1"X12" Dura-Bit	DURA112	1"X12" Dura-Bit
DURA124	1"X24" Dura-Bit	DURA124	1"X24" Dura-Bit
DURA136	1"X36" Dura-Bit	DURA136	1"X36" Dura-Bit
DURA148	1"X48" Dura-Bit	DURA148	1"X48" Dura-Bit
DURA154	1"X54" Dura-Bit	DURA154	1"X54" Dura-Bit
DURA172	1"X72" Dura-Bit	DURA172	1"X72" Dura-Bit

Extensions, Step Bits & Ship Auger Bits

Extensions

Flexible Extensions provide more reach and feature dual set screws for extra strong hold. Use the 1/4" Extensions for the 3/4" Auger Piranhbits



- FIBEX48 3/16" x 48" Extension
- FIBEX54 3/16" x 54" Extension
- FIBEX72 3/16" x 72" Extension
- FIBEX1448 1/4" x 48" Extension for 3/4" bits
- FIBEX1454 1/4" x 54" Extension for 3/4" bits
- FIBEX1472 1/4" x 72" Extension for 3/4" bits

WIRE BITS

Wire Bits can be used as locators or "feeler" bits to find a specific wall cavity. The 36" bits can be easily cut to any length needed. Leaves a hole so small it will be unnoticeable.

- WB36047 .047" x 36" Wire Bits (10 pk)
- WB36062 .062" x 36" Wire Bits (10 pk)
- WB36072 .072" x 36" Wire Bits (10 pk)



Multi Bit (Step Drills)



Available in 1/8" to 1 1/2" sizes.

Model	Size	Step
MLT 1	1/8" - 1/2"	13
MLT 3	1/4" - 3/4"	9
MLT 4	3/16" - 7/8"	12
MLT 5	7/16" - 1 1/8"	12
MLT 7	1/4" - 1 1/2"	11

Hardened stepped Bits for clean cuts in sheet metal, electrical boxes, arborite, etc. Handy for creating knockouts.

Ship Auger Bits

The Auger Bit is an aggressive self-feed bit that cuts fast, clean holes in wood. The hex shank eliminates slippage. Available in 7 1/2" & 18" lengths. We have both Star-M bits from Japan and flex bits from Canada.

Model 18"	Size	Model 7 1/2"	Size
AW 3/8-18	3/8"	AW 3/8	3/8"
AW 1/2-18	1/2"	AW 1/2	1/2"
AW 11/16-18	11/16"	AW 11/16	11/16"
AW 3/4-18	3/4"	AW 3/4	3/4"
AW 7/8-18	7/8"	AW 7/8	7/8"
AW 1-18	1"	AW 1	1"
AW 1 1/4-18	1 1/4"		

Nothing but the Best!



STUD BUDDIES

Fits all Standard Steel Studs & Punches

- ONE PIECE
- ONE HAND INSTALLATION
- Fire Rated V.O.
- Why Square Bushing? 70% More cross sectional area!
- More cables, easier pulls.

Part # SB240



NEW
STEEL STUD BUSHINGS



**No Tools Required
FASTER, EASIER TO USE**

Part # SB220

KO Killers

PLASTIC KNOCKOUT FILLERS



Part # KOK Series



- No tools required.
- Snap in with ease.
- Snap out with ease.
- Non-conductive, safer.

Fits *thin* (1/32") and *thick* (1/8") wall thickness.

Available in 1/2" through 2" trade designations.



"Take the fight out of those KO's with KO Killers!"

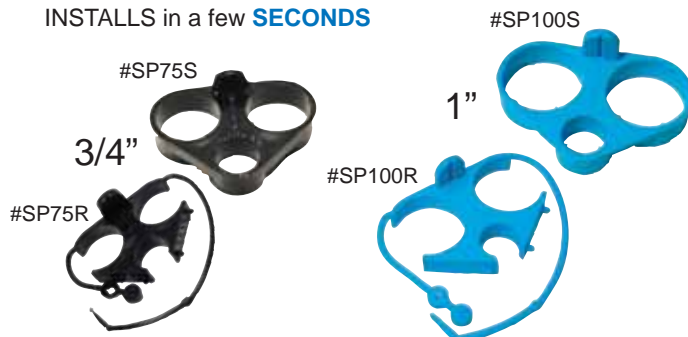
All thumbs? Good, because that's all you need to install our plastic KO Killers. Just pop'em in. No more tools, hammers, flying metal fillers, exploding buss bars, etc. Needing no tools is a big plus, especially when working space is tight. They go in easily and stay in. KO Killers fit all electrical boxes including heavy wall cabinets.

FRANKS StayPut

PIPE HOLDERS FOR CONCRETE SLABS

"Conduits **STAY** where you **PUT** them"

INSTALLS in a few **SECONDS**



**Perfect Alignment
The 1st Time
Every Time**

For 3/4" and 1" Conduit
Fits Rigid Steel, Aluminum,
PVC & Flexible PVC Conduits



**ELIMINATES
Wire, Tape,
Jackhammers
& Heat Guns**

Careful with your pipe work in concrete? Time consuming. Fast and careless with that pipe? Even more time consuming when you have to bring out the jackhammer. FRANKS StayPuts are fast and easy to use. Just slip them on as you go or use the retro models to add a few later. 3/4" FRANKS are spaced for 4" x 4" boxes.

FAN BOX

Ceiling (Paddle) Fans
to 70lb/32kg

FEATURES

- BIG 26 Cubic Inch Capacity
- 4 Fixture Mounting Screws
- Built in Cable Clamps
- 2 Hour Fire Wall Rated

RED COLOR BENEFITS

- Fire Alarm Bells
- Smoke/Heat Detectors
- Exit Lights
- Emergency Lighting

SUPER BOX

**FIRE
ALARM
BOX**



Part #SB400

STAND OFF BRACKET

Box Mounting Plate



Code
Violation



Code
Compliant

Part #SO550



- Allows for stub up fittings
- Code compliant
- Pre-punched for 4"x4" boxes

RAPID FIRE ROMEX CONNECTORS

RAT 500

1/2"

Part #RAT500



RAT 750

3/4"

Part #RAT750



FAST • NO LOCKNUTS
EASY • NO TOOLS REQUIRED

RAT 750 3/4"	Single Cables:	8/3, 6/3
RAT 500 & TT 500 1/2"	Single Cables:	14/2, 14/3, 12/2, 12/3, 10/2, 10/3
	Two Cables:	14/2, 14/3, 12/2

TT 500

TOM TWO WAY



OLD WORK, NEW WORK
INSTALLS FROM **INSIDE**
OR **OUTSIDE** THE BOX



1/2"
Part #TT500

Doing some renovation work? The TT500 also installs from the inside of the box after the wire is fished in. Ingenious. The RAT500 and RAT750 feature the same quality and large wire capacity but install from the outside for use in new construction. If you like the best, try these.

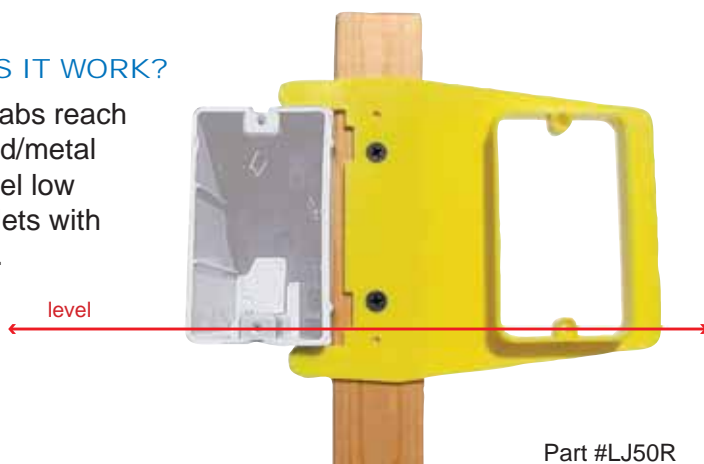
LEVEL JACK

LOW VOLTAGE DATA/COM MUD RING



HOW DOES IT WORK?

Alignment tabs reach across wood/metal studs to level low voltage outlets with A.C. boxes.



No tape measure • No level required

Available in 1/2", 5/8" and 1" rise

EXTRA OFFSET:

- Allows use of all standard fittings
- Reduces A.C. interference to low voltage devices
- Improves drywall finish

Part #LJ50R
#LJ58R
#LJ100R

If you're fussy about your rough-in layout, the Level Jack makes life easy. If you're not, no one will notice because you can't screw up with the Level Jack. Just clip it on to the AC box and screw it down. No level, no tape measure, no special boxes, no special fittings required. Level Jacks fit most AC boxes. See the cartoon for details.



Plug Grip™

Never hold an electrical outlet with your fingers again!



- Helps you "out muscle" stiff wires
- Handy for levelling plugs
- Keeps greasy hands away from walls
- Dual power warning lights

Part #99455



Ever worked on a "hot plug" before? Apparently just about everyone has but it's not recommended. Just in case, use the PlugGrip (it's not grounded), to hold that plug and wrestle those wires. It also has indicator lights to warn you. The PlugGrip keeps your greasy mitts off the wall and it's handy for levelling plugs.

NEW



AUDIBLE CIRCUIT IDENTIFIER

Features

- 3 to 130 volt AC & DC
- Built in polarity lights
- Handy adapter fittings
- Adjustable volume control

SOUND - It's Simple & Reliable

Part # 99101

Includes
FREE
adapter Set

DRILLER'S Dust Bowl



EAT MY DUST? Not with this tool.

HOLE SAW Dust Collector

Fits
Hole Saws
up to 8"



Part #48000

Drill & saw are
not included

You may enjoy a face full of drywall dust but your customers might not. The flexible DRILLER'S DUST BOWL compresses against the work surface and traps all dust and debris as you drill. It fits your drill and hole saw without any adjustments. Put an end to 'unprotected hole sawing'.

EXPLODING GARBAGE CAN

Collapsible Trash Container

Featuring an internal support spring that "Springs into Action"

Size:

19" x 24" (open)

1 1/2" x 24" (collapsed)



Heavy Duty, Tear Resistant Polytuf Fabric

Part #51000

Who says you're a slob? Clean up your reputation with your own trash can. The Exploding Garbage Can will dazzle your customers, especially if you use it! Pops up and folds flat...ready when needed.

Tired of this?



Try this!

....Just when you thought the perfect bender was only a Pipe Dream....

THE HOPPY BENDER

**COMING SOON TO
A WHOLESALER**

NEAR YOU.



Old fashioned bender
7-90°, 3-45°, 4-18°, 2-135°
....2 1/2 hours and
still working on it!!!

Hoppy Bender

*All your bends, including 3 and 4 point saddles,
done in a Fraction Of The Time!*



**RACK-A-TIERS?
WHO ARE THOSE GUYS?**

Electricians, like you. We're proud that the Rack-A-Tiers product line was designed by electricians, over 30 of them so far. How about you? Our industry could use your ideas as well.



SLUGGO OX™

The Ultimate Ground Rod Driving Tool

SLUGGO-OX™ is the revolutionary new tool that's taking the industry by storm.

Features

- Incredibly strong, made of 3" hot-rolled, heat-treated, hardened steel
- 3 1/2" bore to accept 3/4" and 5/8" ground rods
- 80% more striking surface
- One piece, light-weight (7lbs.)
- Yellow zinc chromate surface to deter rust

Part # 67119

RACK-A-TIERS®

Available from RACK-A-TIERS Manufacturing Inc.

RACK-A-TIERS®  #11455	HOOKER  #10455	RACK 'N ROLLER  #12888	E-Z ROLL WIRE RACK  #55455	Wire Tub  #18455	Barracuda Fishtape  #BRSS100 #BRSS200
THOMAS WHEELER®  #19455	Pull-Rite®  #15455	REEL-END  #17455	NUT SPINNER  #89455	Pull Buddy 1/2", 3/4", 1"  #42000 #42050 #42075 #42100	LB Wire Guide  #42200
BEND ALL  #77455	SNATCH STRAP  #69455	CROC'S™  #47000	Pipe Spring Bender  1/2" Part #58050 3/4" Part #58075 1" Part #58100	Racksy Pad KNEE PADS  #66455	Value Pack Booty Kit  #47099
Head-LITE Hat  Hands-Free Flashlight #16000	Butt Pouch Pocket Pro Grande #43095 Mini #43015 	RACKY BITS  7000 Series	ROBERTSON® SCREW DRIVERS  #SD110G #SD210R #SD310BK	CONDUIT LEVEL  #45630	RACKY LEVEL  #44777
Laser Plumb Bob™ #88455 LaserChalk Bob IV #24402 	proGrabit  Kit Part #72120	FRANKS StayPut 1" (closed) (retro)  #SP100S #SP100R	FRANKS StayPut 3/4" (closed) (retro)  #SP75S #SP75R	KO Killers  #KOK Series	STUD BUDDIES  #SB220 #SB240
STAND OFF BRACKET  #SB400	SUPER BOX  #SB400	RAT 500 RAT 750  #RAT500 #RAT750	Tom Two Way  #TT500	Level Jack  #LJ50R #LJ58R #LJ100R	Super SPLICER  #11214
PlugGrip™  #99455	Driller's Dust Bowl  #48000	Exploding Garbage Can  #51000	Circuit Siren  # 99101	Quik Lok  # 97008	PYTHON  #MAG6589

RACK-A-TIERS Mfg. Inc.

In Canada:
 Box 24010
 Royal Oak RPO
 Victoria BC V8Z 7E7

In the USA:
 PMB 221
 136 East 8th St.
 Port Angeles WA. 98362-6129

©2007 Rack-A-Tiers
 50M 1005 04/07

www.RACK-A-TIERS.com

Fax: 1-250-479-1489

Toll Free 1-888-939-9991

