



Copper Network Cables

When it comes to voice and data communications, no one can match Quiktron's experience or dynamic manufacturing capabilities. Several of our products are manufactured here in the USA, including a wide array of premier copper-based products. Whether you are looking for standard or custom copper cables, we provide the ideal solution for your requirements.

Our complete line of copper-based solutions include; Cat5e/Cat6, Cat6a, Cat5e 110, Cat3, Cat5 Telco Hydra cables, Cisco® compatible cables, Infiniband™ cables, and 10GCX4.

These cables deliver uncompromising performance, are an exceptional value and complement our line of fiber optic hardware solutions – all within your timeframe and budget, and are backed by customer support that is unparalleled in the marketplace.

In This Section:

▪ Cat5e.....	51-52
▪ Cat6.....	53
▪ Cat6a.....	54
▪ Telco Cables.....	55
▪ Cat5e 110.....	56
▪ Phone Cords & RJ Couplers.....	57
▪ Specialty.....	58-60



CAT5e PATCH CABLES



Cat5e Patch Cables

Quiktron's Q-Series Cat5E Patch Cables (which are made in the USA and can be customized to your specific requirements) are the perfect solution for distributing data, voice and video. Our patch cables are constructed with high-quality wire and a shortened body plug to keep Near-End Crosstalk (NEXT) levels to a minimum while providing the necessary bandwidth to support mission-critical applications.

Features:

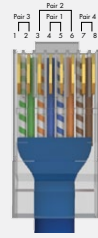
- Meets or exceeds industry standards for NEXT and return loss
- Available in booted and non-booted configurations and in a wide variety of colors
- Made with 24AWG, stranded copper (7x32), four twisted pairs
- Q-Series patch cords are made in the USA
- Available in custom lengths and colors and can ship in as little as two business days
- Value Series patch cables available for same day shipping
- All Quiktron cables feature a lifetime warranty

If the project calls for a specific manufacturer, Quiktron offers the flexibility to make solutions utilizing virtually any manufacturer's cable specified.

Wiring Schematics – 568A vs 568B

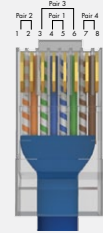
568A

Pair	Wire	Pin
1	White/Blue	5
	Blue	4
2	White/Orange	3
	Orange	6
3	White/Green	1
	Green	2
4	White/Brown	7
	Brown	8



568B

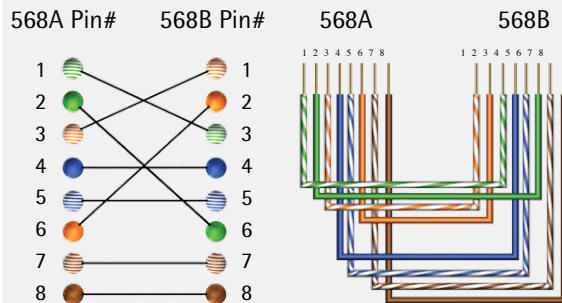
Pair	Wire	Pin
1	White/Blue	5
	Blue	4
2	White/Orange	1
	Orange	2
3	White/Green	3
	Green	6
4	White/Brown	7
	Brown	8



EIA/TIA 568A and 568B specifies the pin designation for Category 5 cabling. While the original specification was known as 568A, it later became known as a wiring scheme along with 568B. The only difference between the two configurations is the placement of the second (white/orange, orange) and third pairs (white/green, green).

Either of the above mentioned wiring schemes may be used during installation. Although 568B is more common, there is no difference in performance. What is critical, however, is that the same wiring scheme is used throughout the network. If 568B is used at the wall plate, then it must also be used at the patch panel. Failure to do so will cause the network switch to not communicate properly. Although there are four pairs, only two (white/orange, orange; white/green, green) are used to transmit and receive.

Crossover Cables – 568A to 568B



A crossover cable is simply a Cat5, Cat5e, or Cat6 network cable that is pinned 568A on one end and 568B on the other. While the unused pins 4, 5, 7, 8 are pinned identical, pins 1, 2, 3, and 6 are "crossed over" to 3, 6, 1, and 2, respectively. Crossover cables are used in situations where two devices have the same interface, particularly computer to computer. A crossover cable or port is often times used when patching a hub or a switch into a wall plate.

CAT5e PATCH CABLES

FIBER

COPPER

RAPIDRUN

AUDIO/VIDEO

PC/COMPUTER



Q-Series Cat5e Patch Cables

	Black	Blue	Gray	Green	Orange	Purple	Red	White	Yellow
Non-Booted	550-135-LLL	550-110-LLL	550-100-LLL	550-120-LLL	550-140-LLL	550-145-LLL	550-130-LLL	550-125-LLL	550-115-LLL
Booted	551-135-LLL	551-110-LLL	551-100-LLL	551-120-LLL	551-140-LLL	551-145-LLL	551-130-LLL	551-125-LLL	551-115-LLL
Slimline Boots*	551-135-LLL-SLB	551-110-LLL-SLB	551-100-LLL-SLB	551-120-LLL-SLB	551-140-LLL-SLB	551-145-LLL-SLB	551-130-LLL-SLB	551-125-LLL-SLB	551-115-LLL-SLB
Crossover	553-135-LLL	553-110-LLL	553-100-LLL	553-120-LLL	553-140-LLL	553-145-LLL	553-130-LLL	553-125-LLL	553-115-LLL
Gigabit Crossover	555-135-LLL	555-110-LLL	555-100-LLL	555-120-LLL	555-140-LLL	555-145-LLL	555-130-LLL	555-125-LLL	555-115-LLL
Shielded	530-135-LLL	530-110-LLL	530-100-LLL	530-120-LLL	530-140-LLL	530-145-LLL	530-130-LLL	530-125-LLL	530-115-LLL
BerkTek LM 350	550-835-LLL	558-810-LLL	558-800-LLL	558-820-LLL	558-840-LLL	558-845-LLL	558-830-LLL	558-825-LLL	558-815-LLL
Solid Wire	520-135-LLL	520-110-LLL	520-100-LLL	520-120-LLL	520-140-LLL	520-145-LLL	520-130-LLL	520-125-LLL	520-115-LLL
Plenum-Rated Solid Wire	597-135-LLL	597-110-LLL	597-100-LLL	597-120-LLL	597-140-LLL	597-145-LLL	597-130-LLL	597-125-LLL	597-115-LLL

LLL – Length can be customized to meet your specifications.

*Slimline Boots available on all Q Series. Pink (150), Lime Green (165), and Brown (160) also available.

Value Series Cat5e Patch Cables – Booted

	Black	Blue	Gray	Green	Orange	Purple	Red	White	Yellow
1ft	570-135-001	570-110-001	570-100-001	570-120-001	570-140-001	570-145-001	570-130-001	570-125-001	570-115-001
2ft	570-135-002	570-110-002	570-100-002	570-120-002	570-140-002	570-145-002	570-130-002	570-125-002	570-115-002
3ft	570-135-003	570-110-003	570-100-003	570-120-003	570-140-003	570-145-003	570-130-003	570-125-003	570-115-003
5ft	570-135-005	570-110-005	570-100-005	570-120-005	570-140-005	570-145-005	570-130-005	570-125-005	570-115-005
7ft	570-135-007	570-110-007	570-100-007	570-120-007	570-140-007	570-145-007	570-130-007	570-125-007	570-115-007
10ft	570-135-010	570-110-010	570-100-010	570-120-010	570-140-010	570-145-010	570-130-010	570-125-010	570-115-010
14ft	570-135-014	570-110-014	570-100-014	570-120-014	570-140-014	570-145-014	570-130-014	570-125-014	570-115-014
25ft	570-135-025	570-110-025	570-100-025	570-120-025	570-140-025	570-145-025	570-130-025	570-125-025	570-115-025
50ft	570-135-050	570-110-050	570-100-050	570-120-050	570-140-050	570-145-050	570-130-050	570-125-050	570-115-050
100ft	570-135-100	570-110-100	570-100-100	570-120-100	570-140-100	570-145-100	570-130-100	570-125-100	570-115-100

Other lengths are available – please contact your Quiktron representative for complete lengths and availability.

Value Series Cat5e Patch Cables – Non-Booted

	Black	Blue	Gray	Green	Orange	Purple	Red	White	Yellow
1ft	560-135-001	560-110-001	560-100-001	560-120-001	560-140-001	560-145-001	560-130-001	560-125-001	560-115-001
2ft	560-135-002	560-110-002	560-100-002	560-120-002	–	–	560-130-002	560-125-002	560-115-002
3ft	560-135-003	560-110-003	560-100-003	560-120-003	560-140-003	560-145-003	560-130-003	560-125-003	560-115-003
5ft	560-135-005	560-110-005	560-100-005	560-120-005	560-140-005	560-145-005	560-130-005	560-125-005	560-115-005
7ft	560-135-007	560-110-007	560-100-007	560-120-007	560-140-007	560-145-007	560-130-007	560-125-007	560-115-007
10ft	560-135-010	560-110-010	560-100-010	560-120-010	560-140-010	560-145-010	560-130-010	560-125-010	560-115-010
14ft	560-135-014	560-110-014	560-100-014	560-120-014	560-140-014	560-145-014	560-130-014	560-125-014	560-115-014
25ft	560-135-025	560-110-025	560-100-025	560-120-025	560-140-025	560-145-025	560-130-025	560-125-025	560-115-025
50ft	560-135-050	560-110-050	560-100-050	560-120-050	560-140-050	560-145-050	560-130-050	560-125-050	560-115-050
100ft	560-135-100	560-110-100	560-100-100	560-120-100	560-140-100	560-145-100	560-130-100	560-125-100	560-115-100

Other lengths are available – please contact your Quiktron representative for complete lengths and availability.



CAT6 PATCH CABLES

Cat6 Patch Cables

Quiktron's Cat6 patch cables deliver uncompromising performance and exceptional value. Each cable meets or exceeds Cat6 TIA/EIA-568-B-2.1 standards and are designed to handle bandwidth intensive applications. The pairs in these cables feature a high tolerance twist design that helps maintain the twist spacing up to the termination point. This drastically reduces both impedance and structural return loss (SRL) as compared to standard Cat5e wire and keeps Near-End Crosstalk (NEXT) levels to a minimum.

Features:

- Connector: 50-micron gold plated RJ45 male to male
- Conductor: 24AWG stranded copper
- Meets or exceeds all Cat6 TIA/EIA-568-B-2.1
- Q-Series Cat6 patch cables are made in the U.S.A. and are available in custom lengths and colors that ship in as little as two business days
- Both Q-Series and Value Series Cat6 patch cables feature a lifetime warranty
- Value Series patch cables available for same day shipping



Q-Series Cat6 Patch Cables

	Black	Blue	Gray	Green	Orange	Purple	Red	White
Non-Booted	540-135-LLL	540-110-LLL	540-100-LLL	540-120-LLL	540-140-LLL	540-145-LLL	540-130-LLL	540-125-LLL
Booted	541-135-LLL	541-110-LLL	541-100-LLL	541-120-LLL	541-140-LLL	541-145-LLL	541-130-LLL	541-125-LLL
Slimline Booted	541-135-LLL-SLB	541-110-LLL-SLB	541-100-LLL-SLB	541-120-LLL-SLB	541-140-LLL-SLB	541-145-LLL-SLB	541-130-LLL-SLB	541-125-LLL-SLB
Crossover	542-135-LLL	542-110-LLL	542-100-LLL	542-120-LLL	542-140-LLL	542-145-LLL	542-130-LLL	542-125-LLL
Shielded	630-135-LLL	630-110-LLL	630-100-LLL	630-120-LLL	630-140-LLL	630-145-LLL	630-130-LLL	630-125-LLL
Solid Wire, Plenum rated	543-135-LLL	543-110-LLL	543-100-LLL	543-120-LLL	543-140-LLL	543-145-LLL	543-130-LLL	543-125-LLL

LLL – Length can be customized to meet your specifications. When ordering cables please specify length in feet or meters.

Value Series Cat6 Patch Cables – Shielded Booted

	Black	Blue	Gray	Green	Orange	Red
3ft	576-S35-003	576-S10-003	576-S00-003	576-S20-003	576-S40-003	576-S30-003
5ft	576-S35-005	576-S10-005	576-S00-005	576-S20-005	576-S40-005	576-S30-005
7ft	576-S35-007	576-S10-007	576-S00-007	576-S20-007	576-S40-007	576-S30-007
10ft	576-S35-010	576-S10-010	576-S00-010	576-S20-010	576-S40-010	576-S30-010
14ft	576-S35-014	576-S10-014	576-S00-014	576-S20-014	576-S40-014	576-S30-014
25ft	576-S35-025	576-S10-025	576-S00-025	576-S20-025	576-S40-025	576-S30-025
35ft	576-S35-035	576-S10-035	576-S00-035	576-S20-035	576-S40-035	576-S30-035

Value Series Cat6 Patch Cables – Booted

	Black	Blue	Gray	Green	Orange	Purple	Red	White	Yellow
1ft	576-135-001	576-110-001	576-100-001	576-120-001	576-140-001	576-145-001	576-130-001	576-125-001	576-115-001
3ft	576-135-003	576-110-003	576-100-003	576-120-003	576-140-003	576-145-003	576-130-003	576-125-003	576-115-003
5ft	576-135-005	576-110-005	576-100-005	576-120-005	576-140-005	576-145-005	576-130-005	576-125-005	576-115-005
7ft	576-135-007	576-110-007	576-100-007	576-120-007	576-140-007	576-145-007	576-130-007	576-125-007	576-115-007
10ft	576-135-010	576-110-010	576-100-010	576-120-010	576-140-010	576-145-010	576-130-010	576-125-010	576-115-010
14ft	576-135-014	576-110-014	576-100-014	576-120-014	576-140-014	576-145-014	576-130-014	576-125-014	576-115-014
25ft	576-135-025	576-110-025	576-100-025	576-120-025	576-140-025	576-145-025	576-130-025	576-125-025	576-115-025
50ft	576-135-050	576-110-050	576-100-050	576-120-050	576-140-050	576-145-050	576-130-050	576-125-050	576-115-050

Value Series Cat6 Patch Cables – Non-Booted

	Black	Blue	Gray	Green	Orange	Purple	Red	White	Yellow
1ft	566-135-001	566-110-001	566-100-001	566-120-001	566-140-001	566-145-001	566-130-001	566-125-001	566-115-001
3ft	566-135-003	566-110-003	566-100-003	566-120-003	566-140-003	566-145-003	566-130-003	566-125-003	566-115-003
5ft	566-135-005	566-110-005	566-100-005	566-120-005	566-140-005	566-145-005	566-130-005	566-125-005	566-115-005
7ft	566-135-007	566-110-007	566-100-007	566-120-007	566-140-007	566-145-007	566-130-007	566-125-007	566-115-007
10ft	566-135-010	566-110-010	566-100-010	566-120-010	566-140-010	566-145-010	566-130-010	566-125-010	566-115-010
14ft	566-135-014	566-110-014	566-100-014	566-120-014	566-140-014	566-145-014	566-130-014	566-125-014	566-115-014
25ft	566-135-025	566-110-025	566-100-025	566-120-025	566-140-025	566-145-025	566-130-025	566-125-025	566-115-025
50ft	566-135-050	566-110-050	566-100-050	566-120-050	566-140-050	566-145-050	566-130-050	566-125-050	566-115-050

Cat6a Network Cables

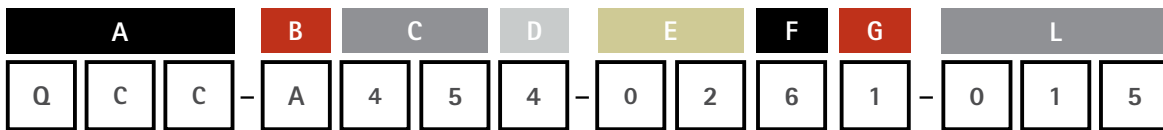
Quiktron's Cat6a network cables enable 10 gigabit data transmission over a twisted pair copper cable, allowing connection distances up to 100 meters. The Cat6a draft extends the Cat6 electrical specifications from 250MHz to 500MHz. It also proposes a new measurement for Power-Sum Alien Crosstalk to 500MHz.

Features:

- Backwards compatible with existing category standards
- Supports 10Gbit/s data rates up to a maximum distance of 100 meters
- Supports IEEE 802.3af and is DTE power compliant
- Compatible with T568A and T568B wiring
- Provides NEXT performance beyond 600MHz
- Fluke DTX tested to meet or exceed ANSI/TIA 568C.2 Category 6a Channel limits



Part Number Generator



Example: QCC-A454-0261-015 = Q-Series Category Cable, Category 6a, RJ45-Blunt, 4 Pair, 568B/568B, CMG SCTP, Blue, 15 Feet

A
3 Digit Series:
QCC Q-Series Category Cables

B
Category:
A Category 6a

C
Connectors:
40 RJ45-Blunt
45 RJ45-RJ45

D
Pairs:
4 4 pair

E
Pinout:
01 568A/568B
02 568B/568B

F
Cable Type:
6 CMG SCTP

G
Cable Color:
1 Blue 6 White
2 Orange 7 Red
3 Green 8 Black
5 Gray 9 Yellow

L
Length in Feet:

TELCO CABLES

Telco Cables

We stock a wide variety of Cat5 and Cat3 Telco cables, both in standard trunk and break-out/hydra styles. Each of our Cat5 trunk and break-out/hydra cables feature components that are UL certified and meet or exceed TIA/EIA standards.

Features:

- 25 Pair 24AWG solid copper cable
- PVC jacket
- 4-40 threaded hardware
- Rugged, high impact plastic connector protects terminations
- Available in custom lengths - contact your local distributor or Quiktron representative
- Lifetime warranty



Cat3 Hydra Cables

Part #	Description
5H3-2511-1XR-LLL	Cat3 90° Right C50 Male to (25) RJ11 Hydra Cable - Cntr Pinned
5H3-1211-1XR-LLL	Cat3 90° Right C50 Male to (12) RJ11 Hydra Cable - USOC Wired
5H3-1245-1XR-LLL	Cat3 90° Right C50 Male to (12) RJ45 Hydra Cable - USOC Wired
5H3-2511-BXR-LLL	Cat3 (25) RJ11 to Blunt Hydra Cable - Center Pinned
5H3-1211-BXR-LLL	Cat3 (12) RJ11 to Blunt Hydra Cable - USOC Wired
5H3-1245-BXR-LLL	Cat3 (12) RJ45 to Blunt Hydra Cable - USOC Wired

Cat5e Hydra Cables

Part #	Description	Connector A	Connector B
5H5-1245-1XR-LLL	Cat5 90° Right C50 Male to (12) RJ45 Hydra Cable - 10Base-T Wired	Cen. 50 Male, 90° Rt.	(12) RJ45
5H5-645-1XR-LLL	Cat5 90° Right C50 Male to (6) RJ45 Hydra Cable - 568B Wired	Cen.50 Male, 90° Rt.	(6) RJ45
5H5-1245-BXR-LLL	Cat5 90° (12) RJ45 Hydra Cable to Blunt - 568B Wired	(12) RJ45	Blunt

Cat5 Trunk Cables

	Cen. 50 Male, 90°	Cen. 50 Male, 180°	Cen. 50 Male, 120° Rt.	Cen. 50 Male, 120° Lf.	Cen. 50 Female, 90°
Centronics 50 Male, 90°	505-110-LLL	505-130-LLL	505-122-LLL	505-121-LLL	505-140-LLL
Centronics 50 Male, 180°	505-130-LLL	505-330-LLL	505-232-LLL	505-231-LLL	505-340-LLL
Centronics 50 Male, 120° Rt.	505-122-LLL	505-232-LLL	505-222-LLL	505-223-LLL	505-242-LLL
Centronics 50 Male, 120° Lf.	505-121-LLL	505-231-LLL	505-223-LLL	505-221-LLL	505-241-LLL
Centronics 50 Female, 90°	505-140-LLL	505-340-LLL	505-242-LLL	505-241-LLL	505-440-LLL
Blunt	505-010-LLL	505-030-LLL	505-022-LLL	505-021-LLL	505-040-LLL

Cat5 Trunk Cables - Plenum Rated

	Cen. 50 Male, 90°	Cen. 50 Male, 180°	Cen. 50 Male, 120° Rt.	Cen. 50 Male, 120° Lf.	Cen. 50 Female, 90°
Centronics 50 Male, 90°	525-110-LLL	525-130-LLL	525-122-LLL	525-121-LLL	525-140-LLL
Centronics 50 Male, 180°	525-130-LLL	525-330-LLL	525-232-LLL	525-231-LLL	525-340-LLL
Centronics 50 Male, 120° Rt.	525-122-LLL	525-232-LLL	525-222-LLL	525-223-LLL	525-242-LLL
Centronics 50 Male, 120° Lf.	525-121-LLL	525-231-LLL	525-223-LLL	525-221-LLL	525-241-LLL
Centronics 50 Female, 90°	525-140-LLL	525-340-LLL	525-242-LLL	525-241-LLL	525-440-LLL
Blunt	525-010-LLL	525-030-LLL	525-022-LLL	525-021-LLL	525-040-LLL

Cat3 Trunk Cables

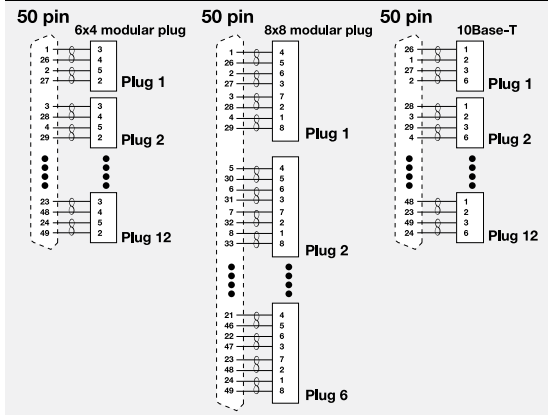
	50 Male, 90°	50 Male, 180°	50 Female, 90°	50 Female, 180°
Centronics 50 Male, 90°	503-110-LLL	503-130-LLL	503-140-LLL	503-150-LLL
Centronics 50 Male, 180°	503-130-LLL	503-330-LLL	503-340-LLL	503-350-LLL
Centronics 50 Female, 90°	503-140-LLL	503-340-LLL	503-440-LLL	503-450-LLL
Centronics 50 Female, 180°	503-150-LLL	503-350-LLL	503-450-LLL	503-550-LLL
Blunt	503-010-LLL	503-030-LLL	503-040-LLL	503-050-LLL

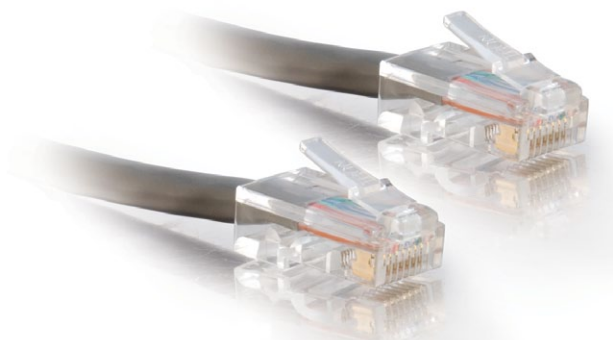
Cat3 Trunk Cables - Plenum Rated

	50 Male, 90°	50 Male, 180°	50 Female, 90°	50 Female, 180°
Centronics 50 Male, 90°	523-110-LLL	523-130-LLL	523-140-LLL	523-150-LLL
Centronics 50 Male, 180°	523-130-LLL	523-330-LLL	523-340-LLL	523-350-LLL
Centronics 50 Female, 90°	523-140-LLL	523-340-LLL	523-440-LLL	523-450-LLL
Centronics 50 Female, 180°	523-150-LLL	523-350-LLL	523-450-LLL	523-550-LLL
Blunt	523-010-LLL	523-030-LLL	523-040-LLL	523-050-LLL

LLL - Length can be customized to meet your specifications. When ordering cables please specify length in feet or meters.

Telco Cables Pin Legend





Cat5e 110 Patch Cables

Quiktron Cat5e 110 Patch Cables provide quick, robust connectivity from patch panels to network electronics. The 110 connector makes terminations, moves, adds, and changes much easier and ensures that missed punch-downs are eliminated. Manufactured from quality Cat5e wire, they are available in custom pin-outs (including 568A) and lengths.

110-110 Wiring Configuration

- 4-pair wired USOC
- 3-pair wired USOC
- 2-pair wired USOC
- 1-pair wired USOC

110-RJ45 Wiring Configuration

- 4-pair wired 568B (also available in 568A and USOC)
- 3-pair wired USOC
- 2-pair wired USOC (also available in 10Base-T)
- 1-pair wired USOC center pinned

110-RJ12 Wiring Configuration

- 3-pair wired USOC
- 2-pair wired USOC
- 1-pair wired USOC center pinned
- Constructed using Cat5e 4-pair with brown pair cut out, or Cat3 4-pair with brown pair cut out

Cat5e 110 to 110 Patch Cables

	Black	Blue	Gray	Green	Orange	Purple	Red	White	Yellow
1-Pair	587-135-LLL	587-110-LLL	587-100-LLL	587-120-LLL	587-140-LLL	587-145-LLL	587-130-LLL	587-125-LLL	587-115-LLL
2-Pair	588-135-LLL	588-110-LLL	588-100-LLL	588-120-LLL	588-140-LLL	588-145-LLL	588-130-LLL	588-125-LLL	588-115-LLL
3-Pair	589-135-LLL	589-110-LLL	589-100-LLL	589-120-LLL	589-140-LLL	589-145-LLL	589-130-LLL	589-125-LLL	589-115-LLL
4-Pair	590-135-LLL	590-110-LLL	590-100-LLL	590-120-LLL	590-140-LLL	590-145-LLL	590-130-LLL	590-125-LLL	590-115-LLL

LLL – Length can be customized to meet your specifications. When ordering cables please specify length in feet or meters.

Cat5e 110 to RJ12 Patch Cables

	Black	Blue	Gray	Green	Orange	Purple	Red	White	Yellow
1-Pair	381-135-LLL	381-110-LLL	381-100-LLL	381-120-LLL	381-140-LLL	381-145-LLL	381-130-LLL	381-125-LLL	381-115-LLL
2-Pair	382-135-LLL	382-110-LLL	382-100-LLL	382-120-LLL	382-140-LLL	382-145-LLL	382-130-LLL	382-125-LLL	382-115-LLL
3-Pair	383-135-LLL	383-110-LLL	383-100-LLL	383-120-LLL	383-140-LLL	383-145-LLL	383-130-LLL	383-125-LLL	383-115-LLL

LLL – Length can be customized to meet your specifications. When ordering cables please specify length in feet or meters.

Cat5e 110 to RJ45 Patch Cables

	Black	Blue	Gray	Green	Orange	Purple	Red	White	Yellow
1 Pair	591-135-LLL	591-110-LLL	591-100-LLL	591-120-LLL	591-140-LLL	591-145-LLL	591-130-LLL	591-125-LLL	591-115-LLL
2 Pair	592-135-LLL	592-110-LLL	592-100-LLL	592-120-LLL	592-140-LLL	592-145-LLL	592-130-LLL	592-125-LLL	592-115-LLL
3 Pair	593-135-LLL	593-110-LLL	593-100-LLL	593-120-LLL	593-140-LLL	593-145-LLL	593-130-LLL	593-125-LLL	593-115-LLL
4 Pair	594-135-LLL	594-110-LLL	594-100-LLL	594-120-LLL	594-140-LLL	594-145-LLL	594-130-LLL	594-125-LLL	594-115-LLL

LLL – Length can be customized to meet your specifications. When ordering cables please specify length in feet or meters.

PHONE CORDS & RJ COUPLERS



*400-904-007BK



*500-810-003

Coiled Handset Phone Cords

Part #	Description
400-904-007WH	7ft White Coiled Handset Cord
400-904-012WH	12ft White Coiled Handset Cord
400-904-015WH	15ft White Coiled Handset Cord
400-904-025WH	25ft White Coiled Handset Cord
400-904-007IV	7ft Ivory Coiled Handset Cord
400-904-012IV	12ft Ivory Coiled Handset Cord
400-904-015IV	15ft Ivory Coiled Handset Cord
400-904-025IV	25ft Ivory Coiled Handset Cord
400-904-007BK*	7ft Black Coiled Handset Cord
400-904-012BK	12ft Black Coiled Handset Cord
400-904-015BK	15ft Black Coiled Handset Cord
400-904-025BK	25ft Black Coiled Handset Cord
400-904-007C	7ft Charcoal Gray Coiled Handset Cord
400-904-012C	12ft Charcoal Gray Coiled Handset Cord
400-904-015C	15ft Charcoal Gray Coiled Handset Cord
400-904-025C	25ft Charcoal Gray Coiled Handset Cord

Modular Silver Satin Cables

Part #	Description
500-810-003*	3ft 4-Conductor Flipped Silver Satin Modular Cable
500-810-007	7ft 4-Conductor Flipped Silver Satin Modular Cable
500-810-010	10ft 4-Conductor Flipped Silver Satin Modular Cable
500-810-014	14ft 4-Conductor Flipped Silver Satin Modular Cable
500-810-025	25ft 4-Conductor Flipped Silver Satin Modular Cable
500-811-103	3ft 6-Conductor Flipped Silver Satin Modular Cable
500-811-107	7ft 6-Conductor Flipped Silver Satin Modular Cable
500-811-110	10ft 6-Conductor Flipped Silver Satin Modular Cable
500-811-114	14ft 6-Conductor Flipped Silver Satin Modular Cable
500-811-125	25ft 6-Conductor Flipped Silver Satin Modular Cable
500-812-003	3ft 8-Conductor Flipped Silver Satin Modular Cable
500-812-007	7ft 8-Conductor Flipped Silver Satin Modular Cable
500-812-010	10ft 8-Conductor Flipped Silver Satin Modular Cable
500-812-014	14ft 8-Conductor Flipped Silver Satin Modular Cable
500-812-025	25ft 8-Conductor Flipped Silver Satin Modular Cable
500-815-003	3ft 8-Conductor Straight Silver Satin Modular Cable
500-815-007	7ft 8-Conductor Straight Silver Satin Modular Cable
500-815-010	10ft 8-Conductor Straight Silver Satin Modular Cable
500-815-014	14ft 8-Conductor Straight Silver Satin Modular Cable
500-815-025	25ft 8-Conductor Straight Silver Satin Modular Cable



*2601-01926-ADT

RJ11, RJ12, & RJ45 Couplers

Part #	Description
2601-20201-ADT	CAT5E RJ45 Modular In-line Coupler
2601-01919-ADT	RJ11 4-Pin Modular In-line Coupler Crossed
2601-01920-ADT	RJ11 4-Pin Modular In-line Coupler Straight Through
2601-01926-ADT*	RJ12 6-Pin Modular In-Line Coupler Crossed
2601-01927-ADT	RJ12 6-Pin Modular In-Line Coupler Straight Through
2601-01936-ADT	RJ45 8-Pin Modular In-Line Coupler Crossed
2601-01937-ADT	RJ45 8-Pin Modular In-Line Coupler Straight Through
2601-01938-ADT	RJ45 8-Pin Modular "T" Adapter for Phone



*2309-15334-010



*2601-03183-008

Cisco® Compatible Cables

With Cisco Compatible Cables from Quiktron, you get the fit and functionality of the manufacturer's cable with greater convenience and a lower price. These Cisco compatible cables are guaranteed to comply with Cisco's rigid standards for original manufactured cabling specifications.

Features:

- Provides the fit and functionality of the manufacturer's cable
- Offers greater convenience for customers at a lower price
- Lifetime Warranty

Cisco Compatible Cables	
Part #	Description
2309-15334-010*	10ft Cisco Compatible LFH60M-LFH60M Crossed Cable
2309-16617-010	10ft Cisco Compatible DTE RS232 LFH60M-DB25M Cable
2309-16618-010	10ft Cisco Compatible DCE RS232 LFH60M-DB25F Cable
2309-16619-010	10ft Cisco Compatible DCE V.35 LFH60M-V.35F Cable
2309-16620-010	10ft Cisco Compatible DTE V.35 LFH60M-V.35M Cable
2309-16621-010	10ft Cisco Compatible DTE RS530 LFH60M-DB25M Cable
2309-17262-025	25ft Cisco Compatible DTE V.35 LFH60M-V.35M Cable
2309-24315-010	10ft Cisco Compatible DTE 26-pin-V.35M Smart Serial Cable
2309-25025-010	10ft Cisco Compatible DCE 26-pin-DB25F Smart Serial Cable
2309-25262-010	10ft Cisco Compatible DTE 26-pin-DB25M Smart Serial Cable
2309-26878-010	10ft Cisco Compatible DCE 26-pin-V.35F Smart Serial Cable
2309-28809-010	10ft Cisco Compatible DTE 26-pin-DB37M Smart Serial Cable

BNC ThinNet

This RG58 BNC Cable is the ideal cable for your ThinNet Ethernet network. It meets or exceeds standards for shielding and features a rugged design. This heavy-duty cable will stand the test of time in the toughest environments. BNC cables are the solution in environments where there is considerable interference, or where running new twisted pair wire is not feasible.

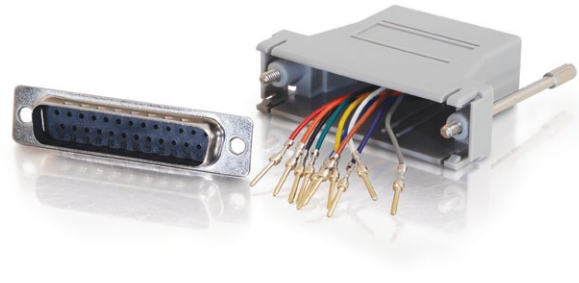
Features:

- Connector: BNC male to BNC male
- RG Type: 58/U
- Impedance: 50 Ohm
- Requires BNC T-Connector for proper connection at NIC or hub

BNC ThinNet	
Part #	Description
2601-03183-008*	8ft RG58 BNC ThinNet Coax Cable
2601-03186-015	15ft RG58 BNC ThinNet Coax Cable
2601-03188-025	25ft RG58 BNC ThinNet Coax Cable
2601-03189-050	50ft RG58 BNC ThinNet Coax Cable
2601-03190-075	75ft RG58 BNC ThinNet Coax Cable



*2312-33063-001



*2601-02922-ADT

IB-4X Infiniband™ & 10G-CX4 Cables

InfiniBand is a high-performance serial I/O computing architecture that enables high bandwidths and low latency for server clusters. InfiniBand and 10G-CX4 have become the standard interconnect of choice for HPC (high performance computing) environments and are quickly becoming the preferred standard in high performance, enterprise data centers. Quiktron's InfiniBand cables provide an alternative to fiber optics for connecting servers, Raid Arrays, and other network components that may not feature fiber ports.

Features:

- High speed 10Gbps copper interconnect
- Connectors: IB-4X to IB-4X (Latch Style)
- Low latency
- Lifetime warranty against defects of materials and workmanship
- Great for Data Centers and HPC (high performance computing)

IB-4X Infiniband™ & 10G-CX4 Cables

Part #	Description
2312-33063-001*	1.65ft 0.5m IB-4X Infiniband Cable
2312-33064-003	3.3ft 1m IB-4X Infiniband Cable
2312-33065-010	9.8ft 3m IB-4X Infiniband Cable
2312-33066-016	16ft 5m IB-4X Infiniband Cable
2312-33070-001	1.65ft 0.5m 10G-CX4 Latching Cable
2312-33071-003	3.3ft 1m 10G-CX4 Latching Cable
2312-33072-010	9.8ft 3m 10G-CX4 Latching Cable

Modular Adapters

Whether used in a wiring closet or throughout the office, color-coded modular adapters lend easy identification and differentiation to your cable plan. By color coding your connections, you cut down on troubleshooting time while taking full advantage of the benefits of this modular adapter approach.

Features:

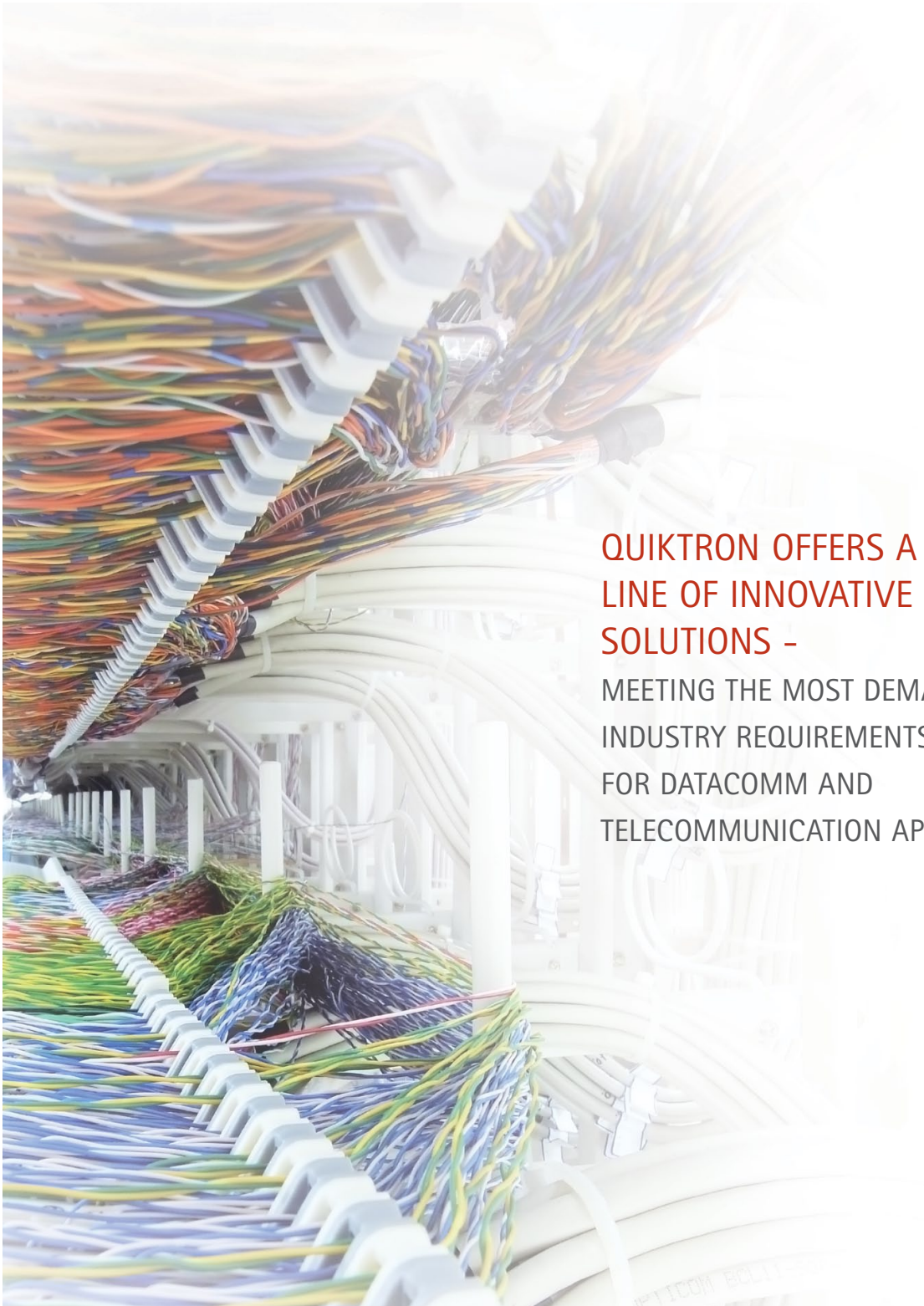
- Cost effective solution to connect serial printers, terminals, modems, POS and other serial equipment
- Allows connection of serial devices over existing UTP cabling infrastructure
- Custom configured to manufacturer specifications or special pinning requirements

Modular Adapters

Part #	Description
2601-02918-ADT	RJ12/DB25M Modular Adapter Beige
2601-02191-ADT	RJ12/DB9F Modular Adapter Gray
2601-02920-ADT	RJ12/DB9M Modular Adapter Gray
2601-02916-ADT	RJ12/DB9M Modular Adapter Beige
2601-02921-ADT	RJ45/DB25F Modular Adapter Gray
2601-02922-ADT*	RJ45/DB25M Modular Adapter Gray
2601-02925-ADT	RJ45/DB15F Modular Adapter Gray
2601-02926-ADT	RJ45/DB15M Modular Adapter Gray

*RJ45/DB25F also available in Black, Blue and Red

Note: These modular adapters are not functional until they are assembled. There is not a universal way to assemble them, so contact your hardware manufacturer for details. We are more than happy to assemble any adapter (for a nominal labor charge) to fit your application so that they are ready to use upon arrival. Just give us a call and we'll do the rest!



**QUIKTRON OFFERS A COMPLETE
LINE OF INNOVATIVE COPPER
SOLUTIONS -**

MEETING THE MOST DEMANDING
INDUSTRY REQUIREMENTS
FOR DATACOMM AND
TELECOMMUNICATION APPLICATIONS.

WE WORK EXCLUSIVELY THROUGH THE INDUSTRY'S LEADING DISTRIBUTORS TO
PROVIDE SYSTEMS WITH EXCEPTIONAL VALUE THAT SUPPORTS BOTH TODAY'S NEEDS
AND TOMORROW'S EMERGING TECHNOLOGY.

FIBER

COPPER

RAPIDRUN

AUDIO/VIDEO

PC/COMPUTER