



# Technology is advancing, lighting should too

AlumaBay, an all aluminum high bay with unique styling and maximum efficiency

**PHILIPS**  
**Day-Brite**

**PHILIPS**  
**CFI**

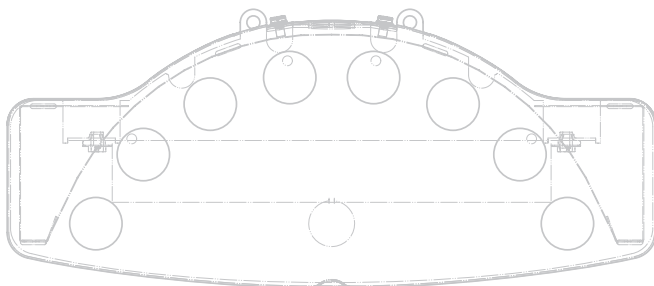
# The fluorescent high bay continues to evolve

Technological advances happen every day. From manufacturing to healthcare, improvements and change are constant. Lighting technology and design should follow suit.

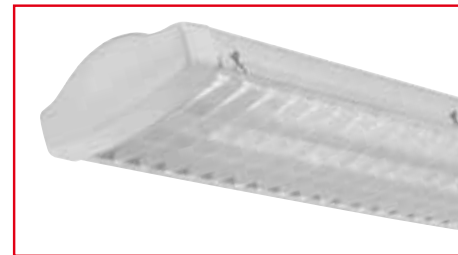
When fluorescent high bays were introduced, they were the beginning of a new era in high bay lighting. They fulfilled the need of reducing operation and maintenance costs in high bay applications while still providing quality lighting. Despite all of their advantages over traditional high bays, there were still areas with plenty of room for improvement. These first generation high bays were somewhat awkward and utilitarian, not at all defined by aesthetics or styling.

Philips Day-Brite's AlumaBay is the next generation fluorescent high bay. Along with the original **energy saving advantages** that gave life to the fluorescent high bay, the AlumaBay features a **sleek attractive profile**. Its **all aluminum construction** makes it **lightweight yet strong** while offering an **eye-catching and durable finish**. The **compact size** of the AlumaBay promotes **easy handling and reduced installation costs**, but does not sacrifice performance. In fact, its **innovative lamp arrangement** offers outstanding light distribution. **Requiring no paint and utilizing less material** than other high bays, AlumaBay is also a very **sustainable** lighting choice. It even ships in cartons that use no tape.

AlumaBay is the first true linear replacement for the old standard HID high bay. It's **hi-tech design and upscale appearance** take industrial, retail, or commercial high bay lighting to new levels while recognizing the need for sustainable lighting solutions.



8-Lamp T5 or T8 in a housing less than 12-1/2" wide and just over 5" high.



ALU-LVR 63 cell louver available.

## Benefits of Aluminum Construction

- lightweight
- strong
- corrosion resistant
- great thermal conductivity



WG-ALU Wire Guard and ALU-LENS available.

### AlumaBay Advantages

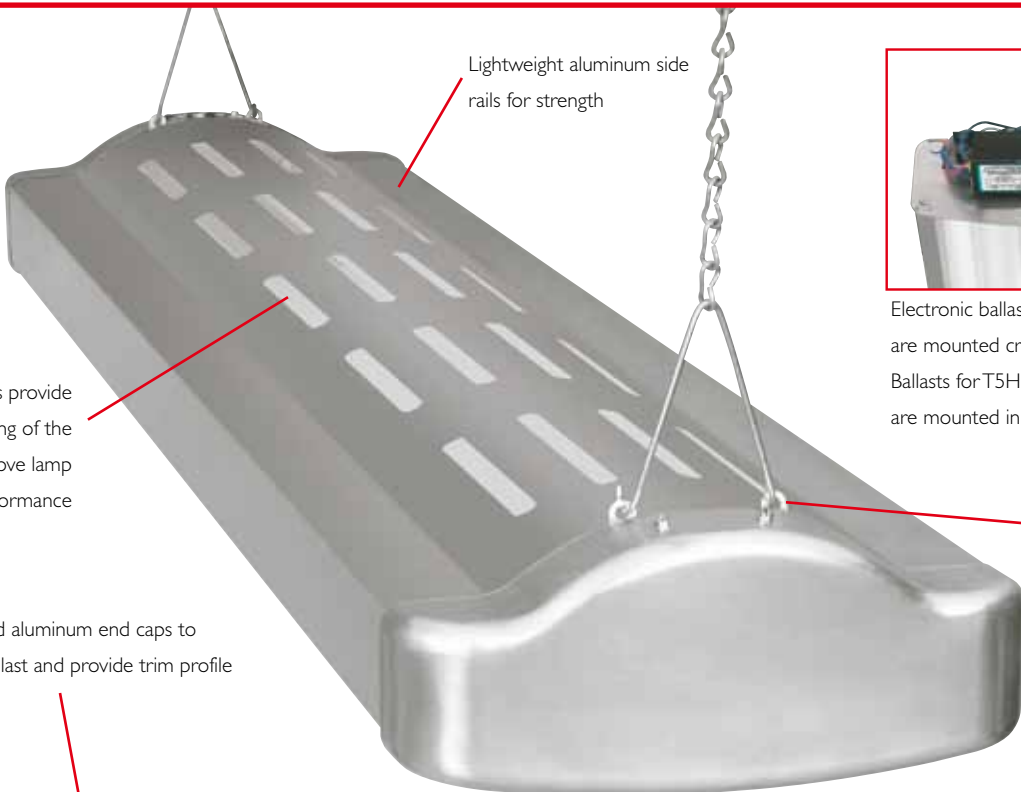
- compact trim profile
- pleasing aesthetics
- outstanding performance and efficiency
- 2-8 lamp T5HO or T8
- available with or without uplight
- flexible mounting methods
- easy installation and maintenance
- 30,000+ hours of lamp life
- designed for maximum sustainability



Occupancy sensor is mounted internally to be less obtrusive and prevent damage during shipment



95% reflective material for reflector maximizes efficiency



Lightweight aluminum side rails for strength

Uplight slots provide uniform lighting of the space and improve lamp performance

Die formed aluminum end caps to enclose ballast and provide trim profile



Electronic ballasts for all T8 and some T5HO units are mounted crosswise on the ends for easy access. Ballasts for T5HO units with more than four lamps are mounted in an easily accessible top channel.

Provisions for chain or cable mounting (FBF/FBE CHAIN KIT shown)



FBF/FBE-GRIP5



ALU/FBF-YTOG15



# Weigh

#### **AlumaBay vs other high bays**

- significantly lighter
- utilizes less material and requires no paint
- compact size – 5.1" H, 12.4" W, 53.3" L
- weighs less than 8lbs
- requires less maintenance
- offers outstanding efficiency
- packaging uses no tape
- the manufacturing process to build an AlumaBay generates 10lbs less CO<sub>2</sub> than the process to build a conventional steel fluorescent high bay



Weight – 25lbs



Weight – 18-37lbs

your options



Weight – 8lbs

## Before AlumaBay



### Sales area when lighted with 400W metal halide high bays

- lumen depreciation is 30% at 8000 hours
- CRI is 65
- lamp color temperature is 3900K
- lamp life is 20,000 hours
- light output at 20,000 hours is about 16,000 lumens
- lighting levels below 20-foot-candles

# The

## After AlumaBay



### Same area when lighted with AlumaBay fluorescent high bays with six 32W T8 high lumen lamps

- lumen depreciation is 5% at 12,000 hours
- CRI is 82
- lamp color temperature is 5000K
- lamp life is 36,000 hours
- light output at 36,000 hours is about 19,000 lumens
- lighting levels above 35 foot-candles



**AlumaBay with uplight uniformly  
lights the entire space**

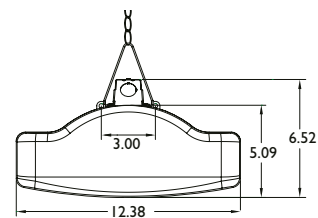
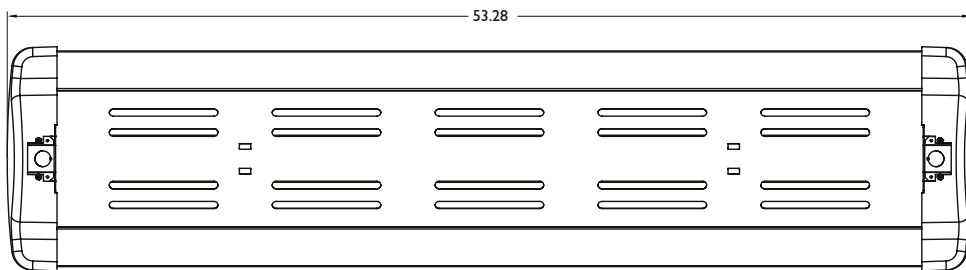


**difference is clear**

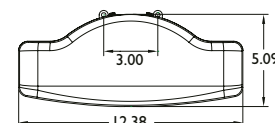


**The new lighting system in this application reduced energy costs by 50%, increased light output by 20% at 20,000 hours, and enhanced the colors of the merchandise.**

# Technical specs and ordering

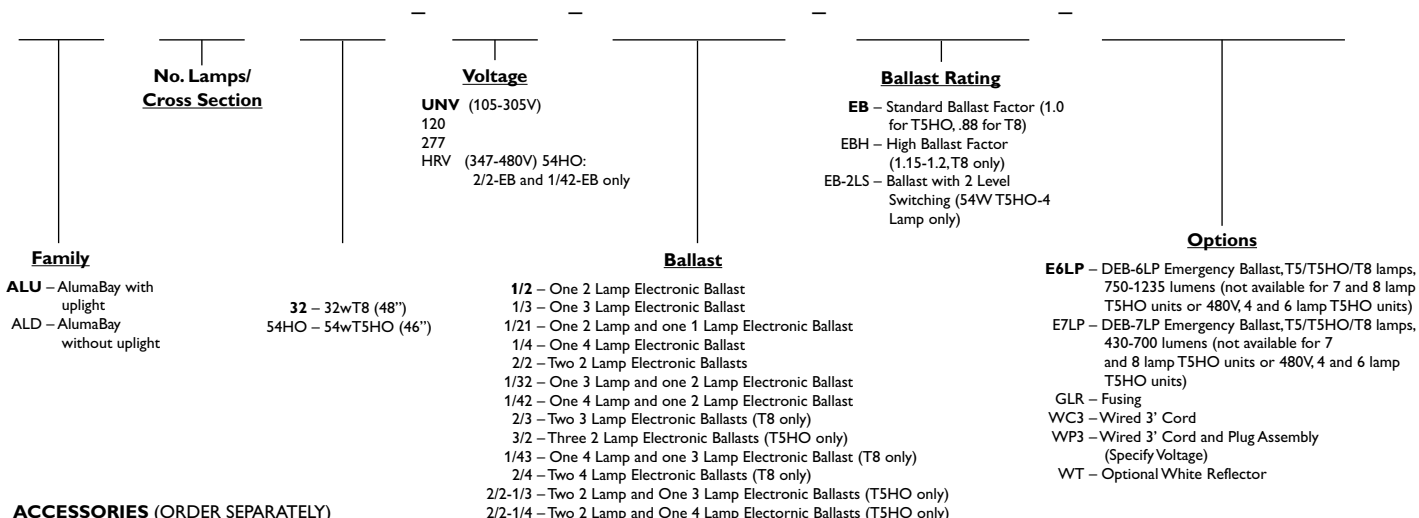


**Unit with Top Enclosure**



**Standard Unit**

SAMPLE CATALOG NUMBER: **ALU654HO-UNV-1/42-EB**



**ACCESSORIES (ORDER SEPARATELY)**

- WG-ALU** – Wire Guard
- MD360** – Motion Detector (120-277)
- MD360-480** – Motion Detector (480)
- ALU-LENS** – Clear acrylic lens
- ALU-LENS-8** – Clear acrylic lens - 8 lamp unit
- ALU-LENS-MD** – Clear acrylic lens for all units with motion detector
- ALU-LVR-AL** – 63 cell louver, natural finish
- FBF/FBE CHAIN KIT** – Hangers with chains
- FBF/FBE-GRIPS** – Hangers with 5' cables
- ALU/FBF-YTOG15** – Two "Y" cables, 15'

**General Notes:**  
 All options factory installed.  
 All accessories are field installed.  
 See spec. sheet HB-10033 for complete details.

**Energy Data**

LAMP WATTS	BALLAST TYPE	INPUT WATTS
32	1/2-EBH	74
	1/3-EBH	111
	1/21-EBH	115
	1/4-EBH	148
	2/2-EBH	148
	1/32-EBH	185
	1/42-EBH	222
	2/3-EBH	222
54	1/43-EBH	259
	2/4-EBH	296
	1/2-EB	120
	1/3-EB	182
	1/21-EB	182
	1/4-EB	240
	2/2-EB	240
	1/32-EB	302
1/42-EB	360	
3/2-EB	360	
2/2-1/3-EB	422	
2/2-1/4-EB	480	



**FBF/FBE CHAIN KIT**



**FBF/FBE-GRIPS**



**ALU/FBF-YTOG15**



© 2013 Koninklijke Philips Electronics N.V. All rights reserved.  
 Specifications are subject to change without notice.  
[www.philips.com/luminaires](http://www.philips.com/luminaires)

Philips Lighting Company  
 200 Franklin Square Drive  
 Somerset, NJ 08873  
 Phone: 855-486-2216

Philips Lighting Company  
 281 Hillmount Road  
 Markham ON, Canada L6C 2S3  
 Phone: 800-668-9008