

Installing and Testing a PlugTail™ GFCI Receptacle

For Use Only with Pass and Seymour PT Series Connector.

Please read this leaflet completely before getting started.

5. Installation instructions:

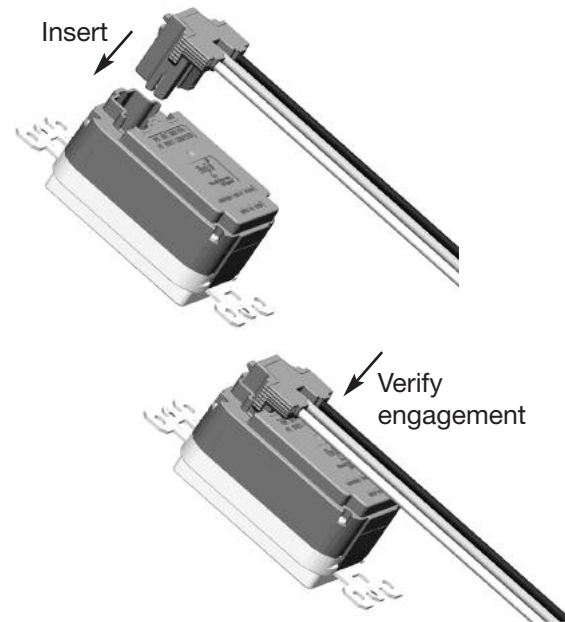
1. Disconnect power.
2. Attach connection to branch circuit wiring.

Black wire to Hot wire;
(connector) (branch circuit wiring)

White wire to Neutral wire;
(connector) (branch circuit wiring)

Green wire to Ground wire or
(connector) Ground system.
(branch circuit wiring)

3. Click Connector into PT Series GFCI.
4. Verify Connector security and engagement.



Note: The Plugtail™ GFCI does not provide protection to other receptacles/outlets.

⚠ CAUTION

- To prevent severe shock or electrocution, always turn the power OFF at the service panel before working with wiring.
- Use this GFCI receptacle with copper or copper-clad wire. Do not use it with aluminum wire.
- Do not install this GFCI receptacle on a circuit that powers life support equipment because if the GFCI trips, it will shut down the equipment.
- For installation in wet locations, protect the GFCI receptacle with a weatherproof cover that will keep both the receptacle and any plugs dry.
- Must be installed in accordance with national and local electrical codes.

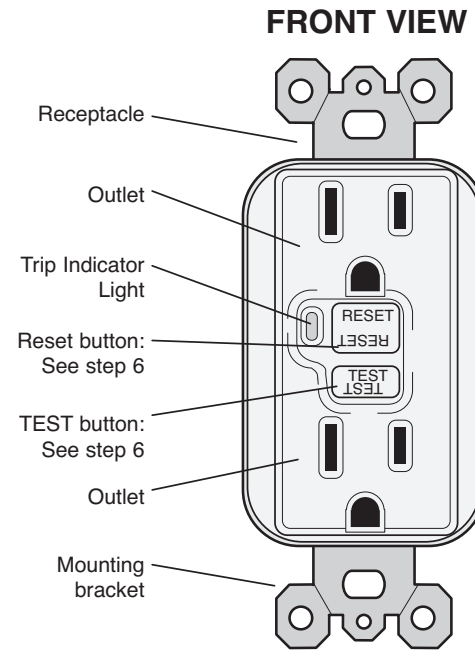
1. What is a GFCI?

A GFCI receptacle is different from conventional receptacles. In the event of a ground fault, a GFCI will trip and quickly stop the flow of electricity to prevent serious injury.

Definition of a ground fault: Instead of following its normal safe path, electricity passes through a person's body to reach the ground. For example, a defective appliance can cause a ground fault.

A GFCI receptacle does not protect against circuit overloads, short circuits, or shocks. For example, you can still be shocked if you touch bare wires while standing on a non-conducting surface such as a wood floor.

2. The GFCI's features



3. Should you install it?

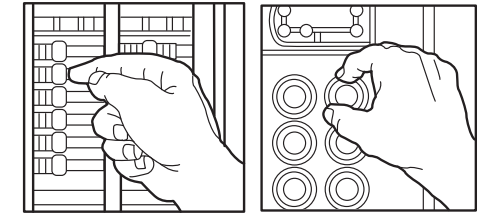
Installing a GFCI receptacle can be more complicated than installing a conventional receptacle.

Make sure that you:

- Understand basic wiring principles and techniques.
- Can interpret wiring diagrams.
- Have circuit wiring experience.
- Are prepared to take a few minutes to test your work, making sure that you have wired the GFCI receptacle correctly.

4. Turn the power OFF

Plug an electrical device, such as a lamp or radio, into the receptacle on which you are working. Turn the lamp or radio on. Then, go to the service panel. Find the breaker or fuse that protects that receptacle. Place the breaker in the OFF position or completely remove the fuse. The lamp or radio should turn OFF.

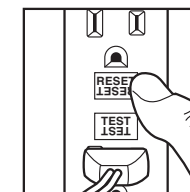
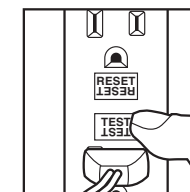
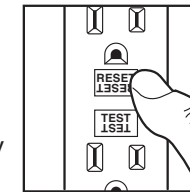


Next, plug in and turn ON the lamp or radio at the receptacle's other outlet to make sure the power is OFF at both outlets. If the power is not OFF, stop work and call an electrician to complete the installation.

6. Test your work

Procedure:

- (a) Turn the power ON at the service panel. Press the RESET button fully. The RESET button should stay in. Plug a lamp or radio into the GFCI (and leave it plugged in) to verify that the power is ON. If there is no power, turn the power OFF and check the wire connections (Step 5). Make sure that there are no loose wires or loose connections and verify that the PT Series Connector is snapped into the PlugTail™ GFCI.
- (b) Press the TEST button in order to trip the device. This should stop the flow of electricity, making the radio or lamp shut OFF and the GFCI's red Trip Indicator Light come on. Note that the RESET button will pop-out. If the power goes OFF, you have installed the GFCI receptacle correctly. To restore power, press the RESET button.
- (c) Press the TEST button (then RESET button) every month to assure proper operation.
- (d) This GFCI will trip and be unable to be reset (no output power) when it has reached its end-of-life. To confirm that the GFCI has reached its end-of-life, unplug the appliances connected to the GFCI and press the Reset Button. If the GFCI continues to trip, then the GFCI has reached its end-of-life and should be replaced. If the GFCI resets, the appliance may be defective.



General Information

Ratings:

15A 125V 60Hz 20A 125V 60Hz

Technical Assistance: (800) 223-4185

www.passandseymour.com

Part No. 340769 Rev. B

LIMITED ONE YEAR WARRANTY

Pass & Seymour will remedy any defect in workmanship or material in Pass & Seymour products which may develop under proper and normal use within one year from date of purchase by a consumer:

(1) by repair or replacement, or, at Pass & Seymour's option, (2) by return of an amount equal to consumer's purchase price. Such remedy is IN LIEU OF ANY AND ALL EXPRESSED OR IMPLIED WARRANTIES OF MERCHANTABILITY OR FITNESS FOR A PARTICULAR PURPOSE. Such remedy by Pass & Seymour does not include or cover cost of labor for removal or reinstallation of the product. ALL OTHER FURTHER ELEMENTS OF DAMAGE (INCIDENTAL OR CONSEQUENTIAL DAMAGES) FOR BREACH OF ANY AND ALL EXPRESSED OR IMPLIED WARRANTIES INCLUDING WARRANTIES OF MERCHANTABILITY OR FITNESS FOR A PARTICULAR PURPOSE ARE EXCLUDED HEREBY. (Some states do not allow disclaimers or exclusion or limitation of incidental or consequential damages, so the above disclaimer and limitation or exclusion may not apply to you.) ANY IMPLIED WARRANTIES INCLUDING WHERE REQUIRED WARRANTIES OF MERCHANTABILITY OR FITNESS FOR A PARTICULAR PURPOSE SHALL BE LIMITED TO THE ONE YEAR PERIOD SET FORTH ABOVE. (Some states do not allow limitations on how long an implied warranty lasts, so the above limitation may not apply to you.)

To insure safety, all repairs to Pass & Seymour products must be made by Pass & Seymour, or under its specific direction. Procedure to obtain performance of any warranty obligation is as follows: (1) Contact Pass & Seymour, Syracuse, New York 13221, for instructions concerning return or repair; (2) return the product to Pass & Seymour, postage paid, with your name and address and a written description of the installation or use of the Pass & Seymour product, and the observed defects or failure to operate, or other claimed basis for dissatisfaction.

This warranty gives you specific legal rights and you may also have other rights which vary from state to state