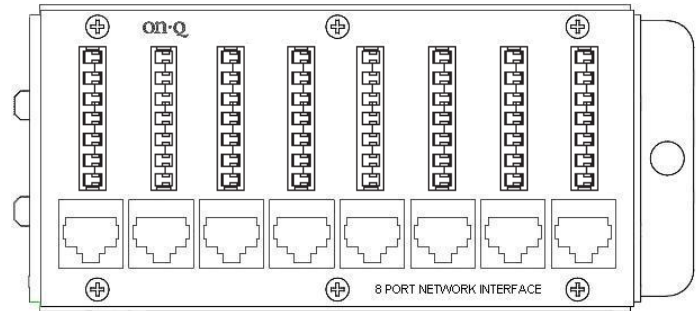


### 1. Introduction

The On-Q/Legrand Network Interface Module (P/N 363486-01) provides a convenient structured interconnect for local area network (LAN) applications, such as 10/100 BASE-T Ethernet. The Network Interface Module (see **Figure 1**) is a group of interconnects that run from 110 punch-down blocks to RJ45 connectors while maintaining Category 5e performance. The modules are designed for direct mounting in On-Q Service Center Enclosures.



**Figure 1**

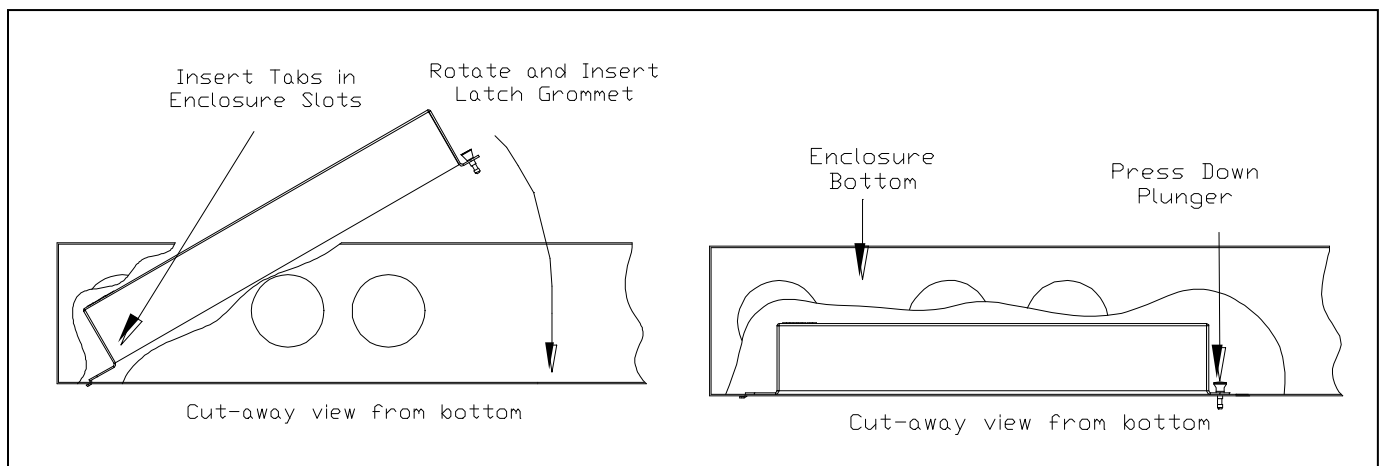
### 2. Description

Each Network Interface Module has eight 4 pair 110 punch-down connectors for connecting to On-Q outlets. The punch-down connectors are connected to individual RJ45 connectors, which provide the interface to the LAN. The Network interface Module occupies three vertical inches and half the width of the enclosure.

### 3. Installation

#### A. Mounting in enclosure

- 1) Align tabs on module with slots on the rear of the enclosure.
- 2) Insert tabs by angling module away from the back of the enclosure.
- 3) Rotate the module and insert fasteners on module into corresponding holes on the rear of the enclosure. (Plunger must be in a pulled out position for fastener to engage hole.)
- 4) Push plunger in to lock module in place. Pull on module to assure module is locked properly in place.



**Figure 2**

#### B. Port - Outlet cable termination

- 1) Identify outlet cable and route to one of the numbered 110 punch-down blocks. In routing cable allow slack for bundling to the side and avoiding other cable terminations. Trim cable about 2 inches beyond connector.
- 2) Strip off approximately 4 inches of the outer jacket using On-Q Cat 5 Strip Tool (P/N 363292-01 or equivalent).
- 3) Position pairs over color-coded slots on the connector.

**Note: Do not untwist pairs.**

**Note: White wires may not have color trace stripe. Keep white wire paired with appropriate colored wire based on twist.**

- 4) Without untwisting cable, position the wires in individual slots as shown in **Figure 3**.
- 5) Punch-down and trim wires using On-Q Punch Down Tool (P/N 363293-01) or equivalent.
- 6) Remove excess wire and tug slightly on cable to assure wire is securely installed in connector.
- 7) Record room number to connector number.
- 8) Repeat until all outlets are connected.

#### C. Securing Cables

After all cables are connected to the module the cables should be bundled and grouped to allow ease of maintenance. Wire management straps, P/N 363491-01, may be used to bundle cable.

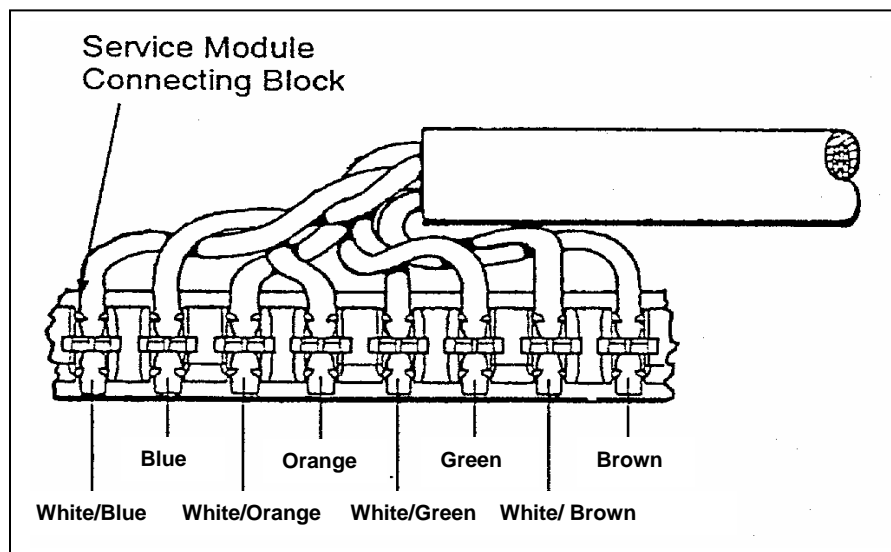


Figure 3