

# Conduit Body, Cover & Gasket Assemblies

For Rigid Conduit & IMC

## Types LB, T, LL, LR, C

### Use:

To provide access to conductors for pulling, splicing, maintenance and future changes/upgrades. Allows connection of straight conduit runs, branch conduit runs and 90° bends.

### Features:

- Tapered threaded hubs (NPT)
- Packaged complete under one Catalog Number
- Ready to use

### Material/Finish

Conduit Body - Die-cast, Copper-free Aluminum with Aluminum Enamel  
Cover - Type BS Aluminum  
Gasket - Type SGN Neoprene

### Third Party Certification:



UL Listed:  
E-18095  
Suitable for wet locations.



CSA Certified:  
LR-9795  
Suitable for wet locations.

### Applicable Third Party Standards:

UL Standard: 514A  
CSA Standard: C22.2 No. 18  
Fed Spec: A-A-50563  
NEMA: FB-1, FB-2.10

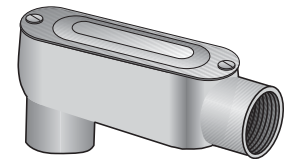
### Dimensional Data:

See Pages AC6 - AC7.

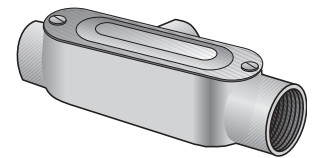
**Note:** For additional information, please refer to:

- Conduit Bodies on page AC1.
- Covers and Gaskets on page AC5.

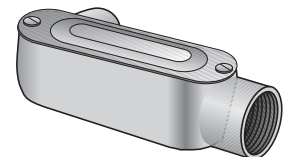
Trade Size (inches)	Catalog Number Die-Cast
½	LB-50ACG
¾	LB-75ACG
1	LB-100ACG
1¼	LB-125ACG
1½	LB-150ACG
2	LB-200ACG
½	T-50ACG
¾	T-75ACG
1	T-100ACG
1¼	T-125ACG
1½	T-150ACG
2	T-200ACG
½	LL-50ACG
¾	LL-75ACG
1	LL-100ACG
1¼	LL-125ACG
1½	LL-150ACG
2	LL-200ACG
½	LR-50ACG
¾	LR-75ACG
1	LR-100ACG
1¼	LR-125ACG
1½	LR-150ACG
2	LR-200ACG
½	C-50ACG
¾	C-75ACG
1	C-100ACG
1¼	C-125ACG
1½	C-150ACG
2	C-200ACG



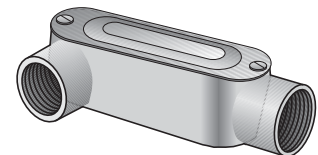
Type LB-ACG



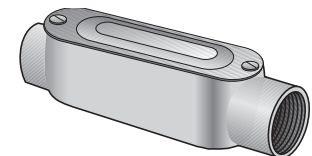
Type T-ACG



Type LL-ACG



Type LR-ACG

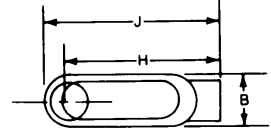
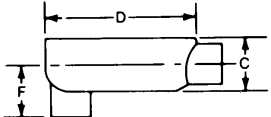


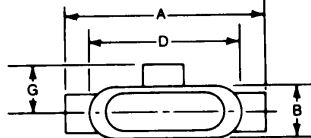

Type C-ACG

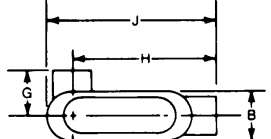
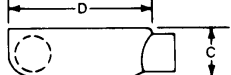
# Aluminum Conduit Bodies

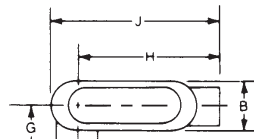
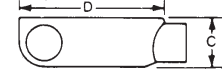
For Rigid Conduit & IMC

## Dimensional Data:

Type LB-A	Catalog Number	Trade Size	Dimensions in Inches						Volume Cu. In.	Max No. Conductors
			B	C	D	F	H	J		
	LB-50A	1/2	1 1/4	1 3/8	4	1 3/8	3 5/8	4 1/2	4.3	N/A
	LB-75A	3/4	1 1/2	1 5/8	4 1/4	1 5/8	4 1/4	5 1/8	7.3	3 #6AWG
	LB-100A	1	1 3/4	2	5 1/4	2	5	6 1/8	12.2	3 #4AWG
	LB-125A	1 1/4	2 1/2	2 5/8	7 1/4	2 1/4	6 1/2	7 5/8	34.0	3 #2AWG
	LB-150A	1 1/2	2 3/4	3 1/8	7 3/4	2 3/4	6 3/4	7 3/4	35.8	3 #1/0AWG
	LB-200A	2	3 3/8	3 3/8	9 1/2	2 5/8	8 1/4	10 5/8	77.5	3 #4/0AWG
	LB-250A	2 1/2	4 3/8	4	12 3/8	3 3/8	11 3/8	13 3/8	142.0	3 #300MCM
	LB-300A	3	4 3/4	4 3/4	12 3/4	3 3/4	11 3/4	13 3/4	173.0	3 #400MCM
	LB-350A	3 1/2	5 3/8	5 3/8	15	4 1/4	13 3/8	16 3/4	292.0	3 #500MCM
	LB-400A	4	5 3/4	5 3/4	15	4 1/2	14	16 3/4	324.0	3 #500MCM

Type T-A	Catalog Number	Trade Size	Dimensions in Inches					Volume Cu. In.	Max No. Conductors
			A	B	C	D	G		
	T-50A	1/2	5	1 1/4	1 3/8	4	1 1/2	4.2	N/A
	T-75A	3/4	5 5/8	1 1/2	1 5/8	4 1/4	1 5/8	7.1	3 #6AWG
	T-100A	1	6 3/4	1 3/4	2	5 1/4	2	12.0	3 #4AWG
	T-125A	1 1/4	8 3/8	2 1/2	2 5/8	7 1/4	2 1/4	31.5	3 #2AWG
	T-150A	1 1/2	8 3/4	2 3/4	2 3/4	7 3/4	2 3/4	34.5	3 #1AWG
	T-200A	2	10 5/8	3 3/8	3 3/8	9 1/2	2 5/8	75.0	3 #2/0AWG
	T-250A	2 1/2	15 5/8	4 3/8	4	12 3/8	3 3/8	142.0	3 #4/0AWG
	T-300A	3	15 3/4	4 3/8	4 3/4	12 3/8	3 3/8	182.0	3 #4/0AWG
	T-350A	3 1/2	18 3/4	5 1/2	5 1/4	14 3/8	4 3/8	290.0	3 #350MCM
	T-400A	4	18 3/4	5 1/2	5 1/2	14 3/8	4 3/8	320.0	3 #350MCM

Type LL-A	Catalog Number	Trade Size	Dimensions in Inches						Volume Cu. In.	Max No. Conductors
			B	C	D	G	H	J		
	LL-50A	1/2	1 1/4	1 3/8	4	1 1/2	3 5/8	4 1/2	4.3	N/A
	LL-75A	3/4	1 1/2	1 5/8	4 1/4	1 5/8	4 1/4	5 1/8	7.3	3 #6AWG
	LL-100A	1	1 3/4	2	5 1/4	2	5	6 1/8	12.2	3 #4AWG
	LL-125A	1 1/4	2 1/2	2 5/8	7 1/4	2 1/4	6 1/2	7 5/8	34.0	3 #2AWG
	LL-150A	1 1/2	2 3/4	3 1/8	7 3/4	2 3/4	6 3/4	7 3/4	35.8	3 #1AWG
	LL-200A	2	3 3/8	3 3/8	9 1/2	2 5/8	7 5/8	10 5/8	77.5	3 #2/0AWG
	LL-250A	2 1/2	4 3/8	3 3/8	12 3/8	3 3/8	11 3/8	13 3/4	142.0	3 #4/0AWG
	LL-300A	3	4 3/4	4 3/4	12 3/4	3 3/4	11 3/4	13 3/4	173.0	3 #4/0AWG
	LL-350A	3 1/2	5 3/8	5 1/4	15	4 1/2	13 3/8	16 3/4	292.0	3 #350MCM
	LL-400A	4	5 3/4	5 3/8	15	4 3/4	13 3/8	16 3/4	324.0	3 #350MCM

Type LR-A	Catalog Number	Trade Size	Dimensions in Inches						Volume Cu. In.	Max No. Conductors
			B	C	D	G	H	J		
	LR-50A	1/2	1 1/4	1 3/8	4	1 1/2	3 5/8	4 1/2	4.3	N/A
	LR-75A	3/4	1 1/2	1 5/8	4 1/4	1 5/8	4 1/4	5 1/8	7.3	3 #6AWG
	LR-100A	1	1 3/4	2	5 1/4	2	5	6 1/8	12.2	3 #4AWG
	LR-125A	1 1/4	2 1/2	2 5/8	7 1/4	2 1/4	6 1/2	7 5/8	34.0	3 #2AWG
	LR-150A	1 1/2	2 3/4	3 1/8	7 3/4	2 3/4	6 3/4	7 3/4	35.8	3 #1AWG
	LR-200A	2	3 3/8	3 3/8	9 1/2	2 5/8	7 5/8	10 5/8	77.5	3 #2/0AWG
	LR-250A	2 1/2	4 3/8	3 3/8	12 3/8	3 3/8	11 3/8	13 3/4	142.0	3 #4/0AWG
	LR-300A	3	4 3/4	4 3/4	12 3/4	3 3/4	11 3/4	13 3/4	173.0	3 #4/0AWG
	LR-350A	3 1/2	5 3/8	5 1/4	15	4 1/2	13 3/8	16 3/4	292.0	3 #350MCM
	LR-400A	4	5 3/4	5 3/8	15	4 1/2	13 3/8	16 3/4	350.0	3 #350MCM