

Aluminum Conduit Bodies

For Rigid Conduit & IMC

Types LB, T, LL, LR, C

Use:

To provide access to conductors for pulling, splicing, maintenance and future changes/upgrades. Allows connection of straight conduit runs, branch conduit runs and 90° bends.

Features:

- Tapered threaded hubs (NPT).
- Raintight when used with gasketed covers.
- For covers and gaskets, see Page AC5.
- Internal volume and maximum wire clearly marked on castings.

Material/Finish:


½" - 2" Trade Size


Die-cast Copper-free Aluminum/
Aluminum Enamel

2½" - 4" Trade Size

Sand-cast Copper-free Aluminum/
Aluminum Enamel

Third Party Certification:

 UL Listed: E-18095
Suitable for wet locations when used with gasketed covers.

 CSA Certified: 009795
Suitable for wet locations when used with gasketed covers.

Applicable Third Party Standards:

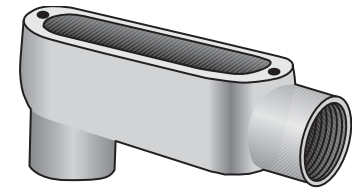
UL Standard: 514A
CSA Standard: C22.2 No. 18
Fed Spec: A-A-50563
NEMA: FB-1, FB-2.10

Dimensional Data:

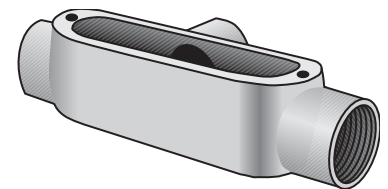
See Pages AC6, AC7

Note: Conduit bodies are suitable for use in Class I, Div. 2 hazardous locations per NEC Section 501-4(B).

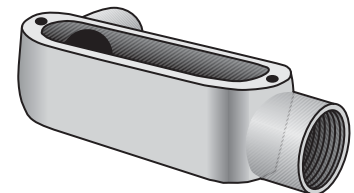
Trade Size (inches)	Catalog Number Die-Cast	Catalog Number Sand-Cast
½	LB-50A	
¾	LB-75A	
1	LB-100A	
1¼	LB-125A	
1½	LB-150A	
2	LB-200A	
2½		LB-250A
3		LB-300A
3½		LB-350A
4		LB-400A
½	T-50A	
¾	T-75A	
1	T-100A	
1¼	T-125A	
1½	T-150A	
2	T-200A	
2½		T-250A
3		T-300A
3½		T-350A
4		T-400A
½	LL-50A	
¾	LL-75A	
1	LL-100A	
1¼	LL-125A	
1½	LL-150A	
2	LL-200A	
2½		LL-250A
3		LL-300A
3½		LL-350A
4		LL-400A
½	LR-50A	
¾	LR-75A	
1	LR-100A	
1¼	LR-125A	
1½	LR-150A	
2	LR-200A	
2½		LR-250A
3		LR-300A
3½		LR-350A
4		LR-400A
½	C-50A	
¾	C-75A	
1	C-100A	
1¼	C-125A	
1½	C-150A	
2	C-200A	
2½		C-250A
3		C-300A
3½		C-350A
4		C-400A



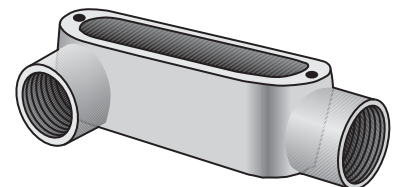
Type LB-A



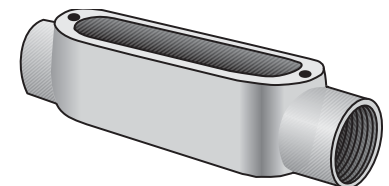
Type T-A



Type LL-A



Type LR-A

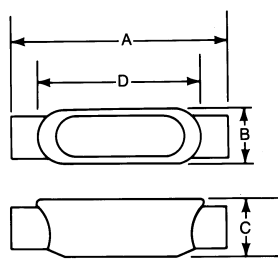


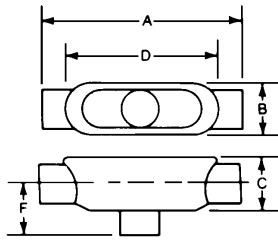
Type C-A

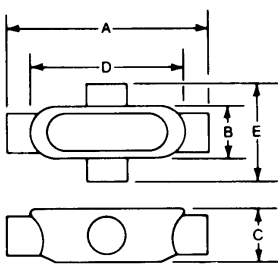
Aluminum Conduit Bodies

For Rigid Conduit & IMC

Dimensional Data:

Type C-A	Catalog Number	Trade Size	Dimensions in Inches				Volume Cu. In.	Max No. Conductors
			A	B	C	D		
	C-50A	1/2	5	1 1/4	1 3/8	4	4.2	N/A
	C-75A	3/4	5 5/8	1 1/2	1 5/8	4 5/8	7.1	3 #6AWG
	C-100A	1	6 3/4	1 3/4	2	5 5/8	12.0	3 #4AWG
	C-125A	1 1/4	8 3/8	2 1/2	2 5/8	7 1/4	31.5	3 #2AWG
	C-150A	1 1/2	8 3/8	2 1/2	2 3/4	7 1/4	34.5	3 #1AWG
	C-200A	2	10 3/8	3 3/8	3 3/8	9 1/2	75.0	3 #2/0AWG
	C-250A	2 1/2	15 1/8	4 3/8	4	12 1/2	153.0	3 #4/0AWG
	C-300A	3	15 3/8	4 3/8	4 3/4	12 1/2	181.0	3 #4/0AWG
	C-350A	3 1/2	18 1/4	5 1/2	5 1/2	15	290.0	3 #350MCM
	C-400A	4	18 1/8	5 1/2	5 5/8	15	320.0	3 #350MCM

Type TB-A	Catalog Number	Trade Size	Dimensions in Inches					Volume Cu. In.	Max No. Conductors
			A	B	C	D	F		
	TB-50A	1/2	5 1/4	1 1/4	1 3/8	4	1 3/8	4.0	N/A
	TB-75A	3/4	6	1 1/2	1 5/8	4 5/8	1 1/2	7.0	3 #6AWG
	TB-100A	1	7 1/4	1 3/4	2	5 5/8	1 3/8	13.0	3 #4AWG
	TB-125A	1 1/4	9 3/8	2 5/8	2 5/8	7 1/4	2 1/4	32.0	3 #2AWG
	TB-150A	1 1/2	9 3/4	2 5/8	2 3/4	7 1/4	2 3/8	34.0	3 #1AWG
	TB-200A	2	11 1/8	3 3/8	3 1/2	9 3/8	2 3/4	70.0	3 #2/0AWG

Type X-A	Catalog Number	Trade Size	Dimensions in Inches					Volume Cu. In.	Max No. Conductors
			A	B	C	D	E		
	X-50A	1/2	5 3/8	1 3/8	1 3/8	4	2 3/4	4.0	N/A
	X-75A	3/4	6 1/8	1 3/8	1 3/8	4 5/8	3 3/8	7.0	3 #6AWG
	X-100A	1	7 1/8	1 3/8	2	5 3/8	3 1/2	12.0	3 #4AWG
	X-125A	1 1/4	9 3/8	2 3/8	2 5/8	7 1/4	4 1/2	32.0	3 #2AWG
	X-150A	1 1/2	9 3/4	2 3/8	2 7/8	7 1/4	4 3/8	36.0	3 #1AWG
	X-200A	2	11 1/8	3 3/8	3 1/2	9 1/2	5 1/2	70.0	3 #2/0AWG