

# SPEED-LOCK™ Steel Box Connectors and SPEED-LOCK™ Zinc Snap Connectors

Type AMC

**NEC/CEC:**  
Listed for Ordinary Locations

## Applications

- To ground and secure MC, AC and flexible metal conduit to boxes and enclosures.
- For steel box installations.

## Features



- No locknut required.
- Single-unit or duplex construction with captive clamp.
- Connects over 100 sizes of MC, AC or flexible metal conduit with just four fittings.
- Easy to install. Just tilt, insert and snap down.
- Single-unit construction eliminates loose component parts.
- Integral red plastic insulated throat bushing provides maximum protection for wire insulation.

## NEC/CEC Certifications and Compliances

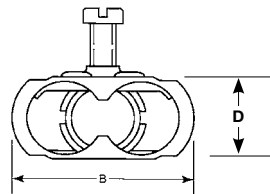
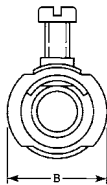
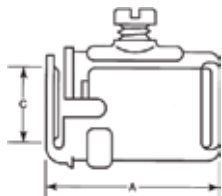
- UL Standard: 514B
- UL Listed: E11852
- CSA Standard: C22.2 No. 18.3
- CSA Certified: 028507

## Standard Material/Finish

- Steel/zinc electroplated

|   | Trade Size (Inches)           | Dimensions in Millimeters (Inches) |             |             |             | Weight per 100 kg (lb) | Catalog Number  |
|---|-------------------------------|------------------------------------|-------------|-------------|-------------|------------------------|-----------------|
|   |                               | A                                  | B           | C           | D           |                        |                 |
|   | 1/2 Single                    | 35.1 (1.38)                        | 25.4 (1.00) | 10.4 (0.41) | 17.5 (0.69) | 2.95 (6.50)            | <b>AMC-50</b>   |
| <b>AMC-50</b>   | 3/4 Single                    | 41.4 (1.63)                        | 33.3 (1.31) | 14.2 (0.56) | 24.9 (0.98) | 3.40 (7.50)            | <b>AMC-75</b>   |
|  | 1/2 Knockout;<br>3/4 capacity | 41.4 (1.63)                        | 33.3 (1.31) | 14.2 (0.56) | 24.9 (0.98) | 3.40 (7.50)            | <b>AMC-5075</b> |
| <b>AMC-52</b>   | 1/2 Duplex                    | 39.6 (1.56)                        | 43.7 (1.72) | 14.2 (0.56) | 17.5 (0.69) | 5.44 (12.00)           | <b>AMC-52</b>   |

## Illustrated Dimensions



# SPEED-LOCK™ Steel Box Connectors and SPEED-LOCK™ Zinc Snap Connectors

Type AMC

NEC/CEC:  
Listed for Ordinary Locations

| Cable Type                          | AMC-50<br>1/2" Knockout  | AMC-5075<br>1/2" Knockout 3/4"<br>Capacity                        | AMC-75<br>3/4" Knockout   | AMC-52 ②<br>1/2" Knockout<br>Duplex                                      |
|-------------------------------------|--|---|---|--|
| AC Steel                            | 14/2 (0.433 Dia.), 14/3, 14/4, 12/2,<br>12/3, 12/4, 10/2, 10/3                       | 10/4 (0.594 Dia.),<br>10/5, 8/3, 8/4, 6/3                         | 10/4 (0.594 Dia.),<br>10/5, 8/3, 8/4, 6/3                         | 14/2 (0.433 Dia.), 14/3,<br>14/4, 12/2, 12/3, 12/4                       |
| HFC Steel<br>Health Care Facilities | 14/2 (0.433 Dia.), 14/3,<br>12/2, 12/3, 10/2   | —   | —   | 14/2 (0.433 Dia.), 14/3,<br>12/2, 12/3, 10/2                             |
| AC Aluminum<br>Interlocked          | 14/2 (0.433 Dia.), 14/3, 14/4,<br>12/2, 12/3, 12/4                                   | 10/4 (0.594 Dia.),<br>8/3, 8/4                                    | 10/4 (0.594 Dia.), 8/3, 8/4                                       | 14/2 (0.433 Dia.), 14/3,<br>14/4, 12/2, 12/3, 12/4                       |
| MC Steel Interlocked                | 14/2 ① (0.450 Dia.), 14/3 ①, 14/4,<br>12/2 ①, 12/3 ①, 12/4 ①, 10/2 ①<br>(0.570 Dia.) | 10/3 (0.600 Dia.), 10/4 ①,<br>8/2 ①, 8/3 ①, 6/2 ①<br>(0.790 Dia.) | 10/3 (0.600 Dia.), 10/4 ①,<br>8/2 ①, 8/3 ①, 6/2 ①<br>(0.790 Dia.) | 14/2 (0.450 Dia.), 14/3,<br>14/4, 12/2, 12/3<br>(0.530 Dia.)             |
| MC Aluminum<br>Interlocked          | 14/2 (0.470 Dia.), 14/3, 14/4, 12/2,<br>12/3, 12/4, 10/2 (0.570 Dia.)                | 10/3 (0.600 Dia.), 10/4,<br>8/2 (0.705 Dia.)                      | 10/3 (0.600 Dia.), 10/4,<br>8/2 (0.705 Dia.)                      | 14/2 (0.470 Dia.), 14/3,<br>14/4, 12/2, 12/3, 12/4,<br>10/2 (0.570 Dia.) |
| MC Aluminum<br>Corrugated           | 14/3 (0.460 Dia.), 14/4, 12/2 ①,<br>12/3 ①, 12/4 ①, 10/2, 10/3<br>(0.600 Dia.)       | —   | —   | —  |
| MC Aluminum Flat                    | 12/3 (0.490x0.280)   | —   | —   | —  |
| Flex RW                             | 3/8 Steel & Al.  | 1/2 Steel   | 1/2 Steel   | —  |
| MCI-A Aluminum                      | 14/2 (0.406 Dia.), 14/3, 12/2, 12/3,<br>12/4, 10/2, 10/3 (0.512 Dia.)                | —   | —   | —  |
| MCI-A HCF<br>Aluminum               | 12/2, 12/3, 12/4<br>10/2 (0.512 Dia.)  | —   | —   | —  |

① Concretetight when taped and used with PVC jacketed cord.

② Accepts 2 cables of each size listed.

# SPEED-LOCK™ Steel Box Connectors and SPEED-LOCK™ Zinc Snap Connectors

**NEC/CEC:**  
Listed for Ordinary Locations

## Applications

- To ground and secure steel or aluminum AC, MC, MCI, MCI-A, HFC-MCI, FMC and RWFMC flexible metal conduit to boxes and enclosures in dry locations.
- For 1/2" knockout.

## Features

- Patented design installs in seconds without the use of tools or locknut.
- Significantly reduces labor.
- Single, duplex or 90 degree construction.
- Design eliminates loose component parts.
- Superior pullout protection.
- Easily removable for reuse.
- Integral red plastic insulated throat +105 °C (+221 °F) rated provides maximum protection for wire insulation.
- Concrete tight when tapped.



## Standard Material/Finish

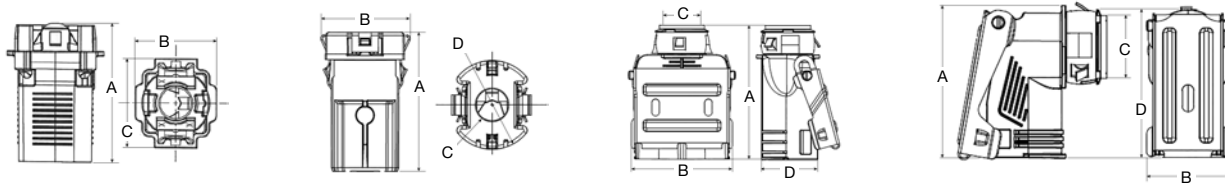
- Body – Zinc diecast
- Cover – Steel/Zinc electroplated
- Insulator – Non-Metallic

## NEC/CEC Certifications and Compliances

- UL Standard: 514B
- CSA Standard: C22.2 No. 18
- cULus Listed: E11853

| Trade Size (Inches) | OB/SB KO Size (Inches) | Connector Type    | Cable Type |                 |             | Cable Size           | Cable Diameter Millimeters (Inches) | Weight per 100 kg (lb) | Catalog Number     |
|---------------------|------------------------|-------------------|------------|-----------------|-------------|----------------------|-------------------------------------|------------------------|--------------------|
|                     |                        |                   | AC/MC      | Aluminium MCI-A | Steel MCI-A |                      |                                     |                        |                    |
| 3/8                 | 1/2                    | Straight          | X          | X               | X           | 3/8"<br>14/2 to 10/3 | 10.03 - 16.21<br>(0.395 - 0.638)    | 2.72 (6)               | <b>38SLC</b>       |
| 3/8                 | 1/2                    | Straight          | X          | X               | X           | 3/8"<br>14/2 to 10/3 | 10.03 - 16.21<br>(0.395 - 0.638)    | 2.72 (6)               | <b>38SLCBULK</b>   |
| 3/8                 | 1/2                    | Cut-In (Old Work) | X          | X               | X           | 3/8"<br>14/2 to 10/3 | 10.03 - 16.21<br>(0.395 - 0.638)    | 2.72 (6)               | <b>38SLC0W</b>     |
| 3/8                 | 1/2                    | Duplex            | X          | X               | —           | 3/8"<br>14/2 to 10/3 | 11.68 -15.49<br>(0.460 - 0.610)     | 4.99 (11)              | <b>3838SLC</b>     |
| 3/8                 | 1/2                    | Duplex            | X          | X               | —           | 3/8"<br>14/2 to 10/3 | 11.68 -15.49<br>(0.460 - 0.610)     | 4.99 (11)              | <b>3838SLCBULK</b> |
| 3/8                 | 1/2                    | 90°               | X          | —               | —           | 3/8"<br>14/2 to 10/3 | 11.68 -15.49<br>(0.460 - 0.610)     | 3.40 (7.5)             | <b>3890SLC</b>     |
| 1/2                 | 1/2                    | 90°               | X          | —               | —           | 1/2"<br>8/2 to 8/3   | 17.02 -19.94<br>(0.670 - 0.785)     | 4.99 (11)              | <b>5090SLC</b>     |

## Dimensions in Millimeters (Inches)



| Catalog Number | A           | B           | C           | D           |
|----------------|-------------|-------------|-------------|-------------|
| 38SLC          | 23.8 (0.94) | 20.8 (0.82) | 37.3 (1.47) | —           |
| 38SLC0W        | 39.0 (1.54) | 24.9 (0.98) | 9.35 (0.37) | 28.0 (1.10) |
| 3838SLC        | 53.3 (2.10) | 40.1 (1.58) | 15.0 (0.59) | 22.3 (0.88) |
| 3890SLC        | 49.0 (1.93) | 31.4 (1.24) | 15.0 (0.59) | 52.2 (2.06) |
| 5090SLC        | 39.0 (1.54) | 24.9 (0.98) | 9.35 (0.37) | 28.0 (1.10) |