

# Malleable Iron Conduit Bushings

Threaded (NPS) For Rigid Conduit & IMC

## Type 2

### Material/Finish:

Malleable Iron/Zinc Plated

### Optional Finish:

Mechanically Galvanized

Contact your local representative for pricing and availability.

### Third Party Certification:



UL Listed: E-11853



CSA Certified: 009795

### Applicable Third Party Standards:

UL Standard: 514B

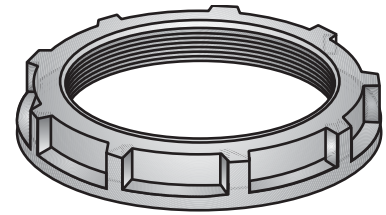
CSA Standard: C22.2 No. 18

Fed. Spec: W-F-408E

NEMA: FB-1

Trade Size (inches)	Catalog Number	Dimensions in Inches	
		Max. Dia.	Height
1/2	2-50	1 1/32	3/8
3/4	2-75	1 1/4	7/16
1	2-100	1 5/16	1/2
1 1/4	2-125	2	5/8
1 1/2	2-150	2 5/32	5/8
2	2-200	2 5/8	5/8
2 1/2	2-250	3 3/16	3/4
3	2-300	3 13/16	15/16
3 1/2	2-350	4 1/16	1 1/16
4	2-400	4 15/16	1 1/16
5	2-500	6	1 1/16
6	2-600	7 3/8	1 1/16

\*U.L. Listing not applicable



Type 2

## Type 3

### Capped Bushings

### Features:

Bushings are supplied with plastic insert cap.

### Material/Finish:

Malleable Iron/Zinc Plated

### Optional Finish:

Mechanically Galvanized

Contact your local representative for pricing and availability.

### Third Party Certification:



UL Listed: E-11853



CSA Certified: 009795

### Applicable Third Party Standards:

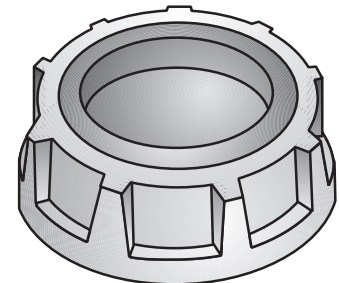
UL Standard: 514B

CSA Standard: C22.2 No. 18

Fed. Spec: W-F-408E

NEMA: FB-1

Trade Size (inches)	Catalog Number	Dimensions in Inches	
		Max. Dia.	Height
1/2	3-50	1 1/32	3/8
3/4	3-75	1 1/4	7/16
1	3-100	1 5/16	1/2
1 1/4	3-125	2	5/8
1 1/2	3-150	2 5/32	5/8
2	3-200	2 5/8	5/8
2 1/2	3-250	3 3/16	3/4
3	3-300	3 13/16	15/16
3 1/2	3-350	4 1/16	1 1/16
4	3-400	4 15/16	1 1/16
5	3-500	6	1 1/16
6	3-600	7 3/8	1 1/16



Type 3