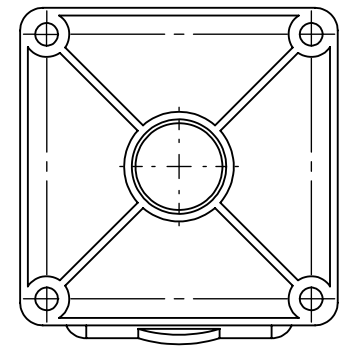
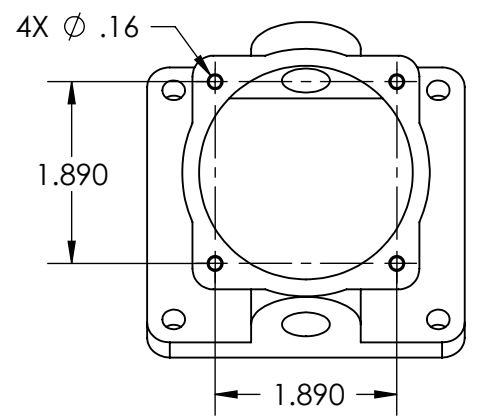
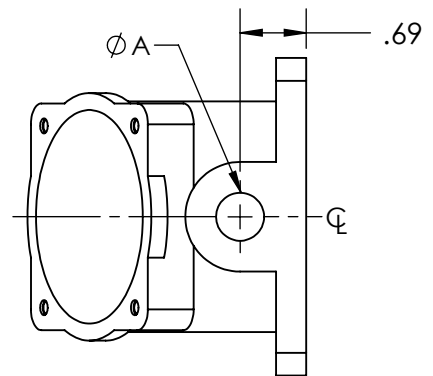
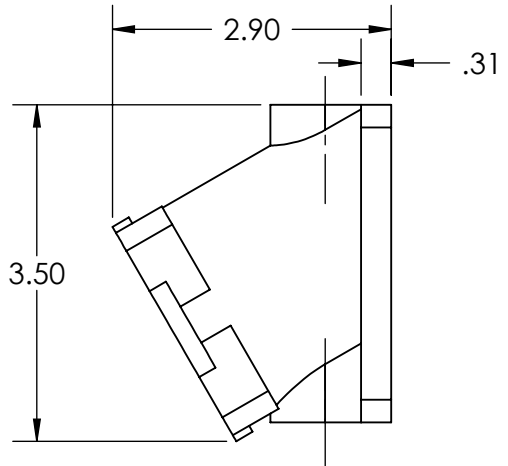
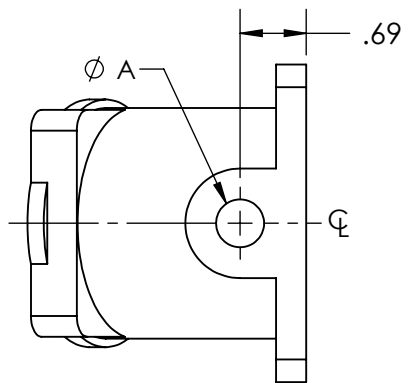
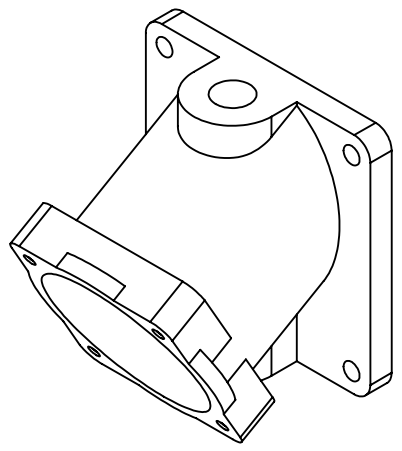
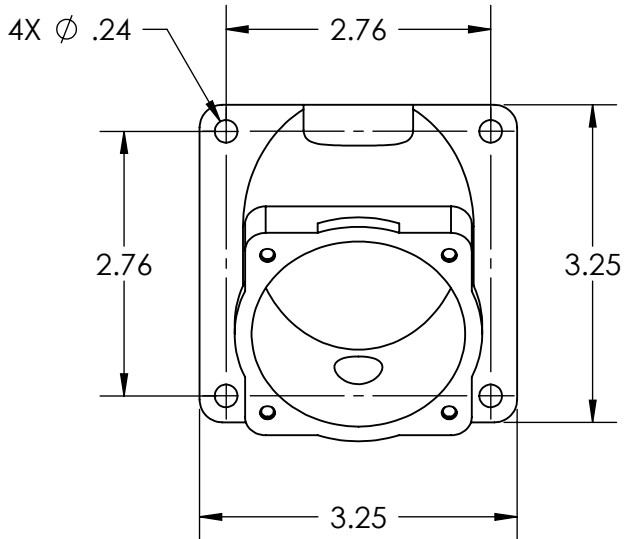


This drawing is the property of MELTRIC Corporation, Franklin, Wisconsin, USA. Any unauthorized copying of this drawing by any means, or disclosure of its contents to any person not authorized by MELTRIC Corporation or its agents to receive it, is strictly prohibited.



PART NUMBER	NPT A
61-3A023-12	1/2" NPT
61-3A023-34	3/4" NPT

NOTE: INTERNAL VOLUME 8.7 CUBIC INCHES.

TOLERANCES UNLESS OTHERWISE SPECIFIED

MACHINED SURFACES  $\sqrt{125}$  MAX

GROUND SURFACES  $\sqrt{32}$  MAX

ANGLE TOLERANCE  $\pm 1^\circ$

REMOVE BURRS & SHARP EDGES TO .015 MAX.

**ENGLISH**

0.X  $\pm 0.05$   
0.XX  $\pm 0.01$   
0.XXX  $\pm 0.005$

DIMENSIONS SHOWN IN OVALS ARE INSPECTION DIMENSIONS.

**MELTRIC CORPORATION**

DRAWN	APPROVED	DRAWING TITLE:	
		30 AMP POLY CONDUIT ENTRY	
DATE:	SCALE	MATERIAL:	
	NTS	BLUE POLYAMIDE	
PROJECT NUMBER	PART NUMBER		SHEET:
	61-3A023-XX		1 OF 1

REV.	DATE	CHANGED BY	REMARKS	ECN#