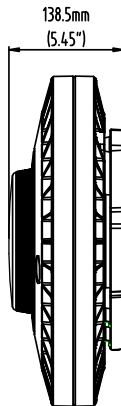
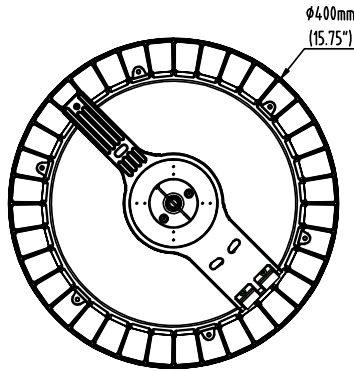


LED DiscMAX CANOPY
CD SERIES



Junction Box Mount



PRODUCT DESCRIPTION:

DiscMAX is a sleek and contemporary canopy fixture that delivers smooth and uniform lighting for parking garage, security and general area lighting. The DiscMAX Canopy can be specified in 40W or 60W to replace HID fixtures ranging from 100W - 250W. A coordinating DiscMAX Post Top Luminaire is also available to complete projects with a cohesive look.

FEATURES:

- 3,980 lumens (40W) and 6,180 lumens (60W)
- 98+ LPW
- 120-277V Universal Voltage Driver
- Type V distributions
- Wet Location Rated for Outdoor Use
- CCT: 5000K
- CRI: >70
- 50,000 hour lumen maintenance (L70)
- 10kA surge protection standard
- 5-year limited warranty

CONSTRUCTIONS:

- Die cast aluminum body with heat sinking across the full module, enabling a long fixture life
- TGIC Polyester Powder Coat Finish. Bronze Standard.
 - Stainless steel hardware
 - 10kA Secondary Surge Protection Standard in accordance with IEEE/ANSI C62.41.2
 - Low Loss PC lens
 - Operating Temperature Range: -30°F to 104°F
 - Mounts to 4" Junction Box

PHOTOMETRICS

See page 2.

MODEL SELECTION (Full list of order codes on pg. 2)		Typical order example: CD60UT550SM					
CD		U	5	50	CM	B	SS
FAMILY	WATTAGE	VOLTAGE	DISTRIBUTION	CCT	MOUNTING	COLOR	SURGE PROTECTION
CD= LED DiscMAX Canopy	40= 40W (175W equivalent) 60= 60W (250W equivalent)	U= 120-277V	T5= Type V	50= 5000K	CM= Canopy Mount	B= Bronze, std	SS= 10kA Surge Suppressor (Standard)

SPECIFICATIONS:

		CD40UT550CMBSS	CD60UT550CMBSS
ITEM	SPECIFICATION	DETAILS	DETAILS
GENERAL PERFORMANCE	Wattage (W)	40	60
	Lumens (lm)	3,929	6,112
	Efficacy (lm/W)	97	101
	NEMA Distribution	Type V	
	Color Temperature (CCT)	5000K	
	CRI	70 min	
	Lumen Maintenance (L70 @ 25°C)	≥50,000 Hrs	
ELECTRICAL	Power Factor	>0.90	
	Input Voltage	120V-277V, 50/60 Hz	
PHYSICAL	Housing	Die cast aluminum with powder coat paint	
	Dimensions	5.45 In. Deep 15.75 In. Diameter	
	Lens	Polycarbonate	
	Humidity	5% - 90% RH, non condensing	
	Operating Temperature	-30°F to 104°F	
CERTIFICATION	Certification	UL 1598, UL 8750, LM79, LM80	
	Environment	Outdoor, Wet locations	
	Material Usage	RoHS compliant; no mercury	
	Warranty	5 years	

ORDERING*:

ORDER CODE	MODEL	WATTAGE	EQUIVALENT	LUMENS	NEMA DISTRIBUTION	CCT	DIMENSION
76771	CD40UT550CMBSS	40W	175W Metal Halide	3,929	Type V	5000K	5.45 in. Deep 15.75 in. Diameter
76772	CD60UT550CMBSS	60W	250W Metal Halide	6,112			

*Please contact your MaxLite representative to order products that don't have order codes listed here.

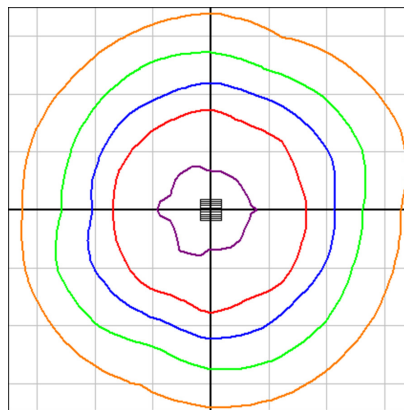
PHOTOMETRICS:

- LEGEND**
- 0.25 fc
 - 0.50 fc
 - 1.00 fc
 - 2.00 fc
 - 5.00 fc

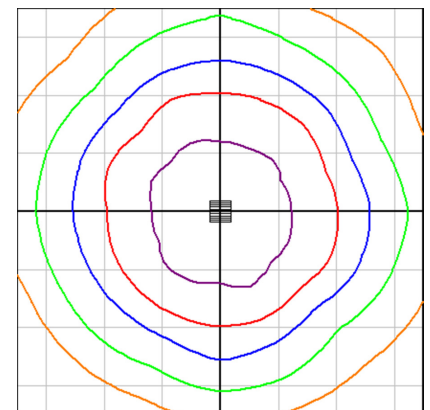
The distance of the side of each square represents 1 mounting height.

For mounting heights other than noted multiply FC by factor below:

$$\frac{(\text{Chart's Mtg Height})^2}{(\text{Actual Mtg Height})^2}$$



CD40UT550CMXXXX
8ft mounting height



CD60UT550CMXXXX
8ft mounting height