

## FEATURES & SPECIFICATIONS

**INTENDED USE** — Intended for mounting heights up to 25' that require low to high light levels and excellent glare control. Ideal for assembly lines, inspection areas and warehousing.

**CONSTRUCTION** — Channel and embossed reflector constructed of die-formed cold rolled steel with longitudinal V-grooves in the channel for strength. Sturdy combination reflector and channel cover secured by cast aluminum, captive quarter-turn latch for easy access to wireway. Available in 4', or 8' tandem wired lengths. Full depth end plates required (order separately, one per fixture or row). Accepts plug-in option for 1, 2 or 3 primary circuits.

**Flnsh:** Five-stage iron phosphate pretreatment ensuring superior paint adhesion and corrosion-resistance. Reflector and channel to be finished with a high-gloss baked white enamel. Reflector is painted after fabrication.

**OPTICS** — Center "V" provides 30° crosswise shielding, minimizes glare. Parabolic reflector, deep die-embossed for added rigidity, provides 20% uplight and is painted after fabrication. Top covers available for downlight distribution.

**ELECTRICAL** — Thermally protected, resetting, Class P, HPF, non-PCB, UL listed, CSA certified ballast standard. Sound rating depends on lamp/ballast combination. AWM, TFN and THHN wire used through-out, rated for required temperatures.

**INSTALLATION** — For unit or row installations, surface or suspended mounting.

**LISTINGS** — UL Listed for 25°C ambient temperatures. UL Listed (standard). CSA certified or NOM certified (see options). UL listed for damp locations.

**WARRANTY** — 1-year limited warranty. Complete warranty terms located at: [www.acuitybrands.com/CustomerResources/Terms\\_and\\_conditions.aspx](http://www.acuitybrands.com/CustomerResources/Terms_and_conditions.aspx)

Ballast warranties provided through the component manufacturers.

**Note:** Actual performance may differ as a result of end-user environment and application.

Specifications subject to change without notice.

|                |
|----------------|
| Catalog Number |
| Notes          |
| Type           |

Parabolic Industrial

PV



T5/T8  
4' or 8' length  
2 lamps

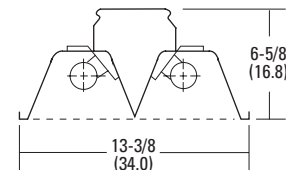
### Specifications

Length: 48 (121.9)

Width: 13-3/8 (34.0)

Height: 6-5/8 (16.8)

All dimensions are inches (centimeters) unless otherwise indicated.



## ORDERING INFORMATION

Lead times will vary depending on options selected. Consult with your sales representative.

Example: PV 2 32 MVOLT GEB10IS

| Series  | Number of lamps | Lamp type                  | Ballast Configuration  |
|---|-----------------|----------------------------|------------------------|
| PV Parabolic Industrial, apertured reflector                    | 2               | <u>T8 lamp</u>             | (blank) 2-lamp ballast |
| PVST Parabolic Industrial, solid top                            | Not included.   | 32 32W (48")               | 1/4 One 4-lamp ballast |
| 1. For tandem double-length unit, add prefix T.<br>Example: TPV |                 | <u>T5 lamp</u>             |                        |
|   |                 | 28 28W (46")               |                        |
|   |                 | <u>Slimline lamps</u>      |                        |
|   |                 | 96T8 59W T8 slimline (96") |                        |
|   |                 | <u>High output</u>         |                        |
|   |                 | 54T5HO 54W T5HO (46")      |                        |
|   |                 | 96T8HO 86W T8 300mA (96")  |                        |

| Ballast   | Voltage                    | Options  |
|---|----------------------------|--|
| GEB10IS Electronic ballast, ≤10% THD, instant start           | 120                        | CW20 Cold-weather ballasts, -20°F starting   |
| GEB10RS Electronic ballast, ≤10% THD, rapid start             | 277                        | GEB10PS Electronic ballasts, ≤10% THD, programmed start  |
| GEB10PS Electronic ballasts, ≤10% THD, programmed rapid start | 347                        | GEB10RS Electronic ballasts, ≤10% THD, rapid start <sup>1</sup>  |
| GEB10PS90 T5HO 90° case temperature ballast                   | MVOLT<br>Others available. | EL55 Emergency battery pack (nominal 390-700 lumens).<br>See Fluorescent Battery Pack Section <sup>2</sup> |
|   |                            | GLR Internal fast-blow fusing (add X for external) <sup>2</sup>  |
|   |                            | GMF Internal slow-blow fuse (add X for external) <sup>2</sup>  |
|   |                            | PLR Plug-in wiring. Specify 1, 2 or 3 branch circuits and hot wires (A=Black, B=Red, C=Blue, AB or AC).    |
|   |                            | TILW Tandem in-line wiring   |
|   |                            | CSA CSA Certified  |
|   |                            | NOM NOM Certified  |
|   |                            | HC Chain hanger set packed in channel (36" length)   |
|   |                            | EL14 Emergency battery pack <sup>3,4</sup>   |

### Accessories: Order as separate catalog number.

|        |  |
|--------|--|
| PCEP   | Full-depth endplates (1 pair), required to enclose wireway.<br>Order one per fixture (unit) or one per row |
| SQ     | Swivel-stem hanger (specify length in 2" increments) up to 48"   |
| 1B     | Ceiling spacer (adjusts from 1-1/2" to 2-1/2" from ceiling)  |
| HC36   | Chain hangers (1 pair, 36" long)   |
| THUN   | Tong hanger  |
| HRUN1  | Hooker® T-bar hanger (1-1/2" from ceiling)   |
| WGAFPV | Wire guard, 4' white <sup>5</sup>  |

### Notes

- Available with 347V.
- Specify voltage.
- Specify voltage.
- Not available with 347 voltage.
- Order two for 8' fixtures.

## MOUNTING DATA

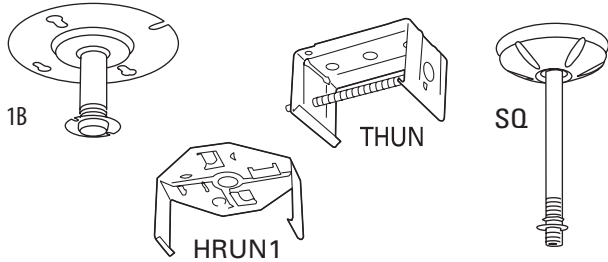
1. For unit or row installation, suspended mounting. PCEP full-depth end plates required to close wireway.

Unit installation — Minimum of two hangers required.

Row installation — One hanger per channel plus one per row required.

Hooker® (**HRUN1**) and HC Hangers — Minimum two per channel (unit and row).

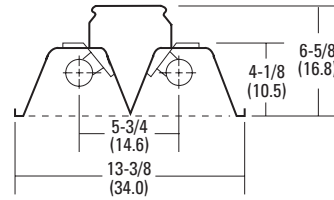
2. See ACCESSORIES below for hanging devices.



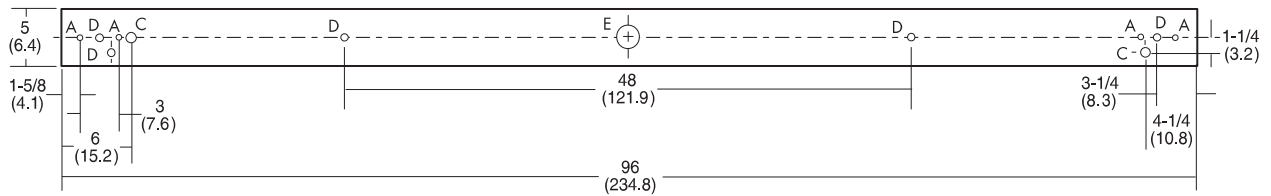
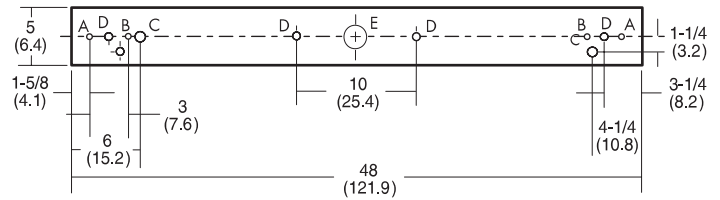
## DIMENSIONS

1. Inches (centimeters). Subject to change without notice.

2. T5 knockout location will differ. Consult factory for details.



A= 1/4 x 1/2 (.635 x 1.27) hole  
 B= 1/4 x 1/2 (.635 x 1.27) K.O.  
 C= 7/8 (2.22) dia. K.O.  
 D= 11/16 (1.75) dia. K.O.  
 E= 2 (5.08) dia. K.O.  
 F= 7/16 (1.11) dia. K.O.



## PHOTOMETRICS

\*See [www.lithonia.com](http://www.lithonia.com).