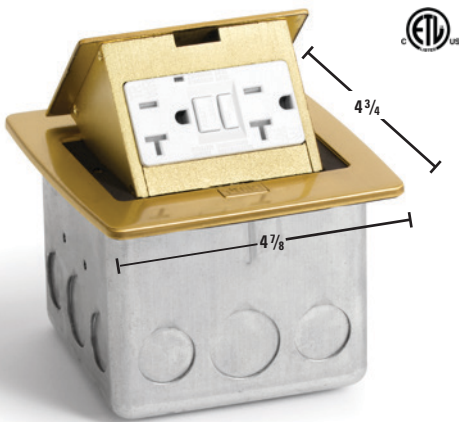


PUFP Counter Top Boxes

CATALOG #	DESCRIPTION
PUFP-CT-B	Brass, pop out counter top plate assembly, with 20 AMP (TR) GFI receptacle
PUFP-CT-B-2USB	Brass, pop out counter top plate assembly, with 15 AMP (TR) duplex power/ 2USB receptacle
PUFP-CT-BK	Black, pop out counter top plate assembly, with 20 AMP (TR) GFI receptacle
PUFP-CT-BK-2USB	Black, pop out counter top plate assembly, with 15 AMP (TR) duplex power/ 2USB receptacle
PUFP-CT-BK-6PORT	Black, pop out counter top plate assembly, with 6 port Comm./Data device (max 3 CAT 6 jacks)
PUFP-CT-OW	Off-White, pop out counter top plate assembly, with 20 AMP (TR) GFI receptacle
PUFP-CT-OW-2USB	Off-White, pop out counter top plate assembly, with 15 AMP (TR) duplex power/ 2USB receptacle

>>>> All counter top plates 4 7/8" W x 4 3/4" L x 3 1/2" H and include PUFP-WB box

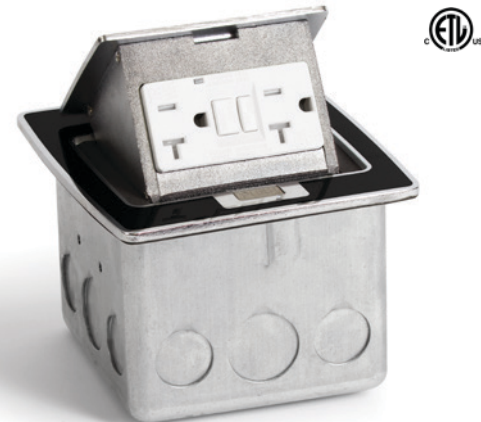
PUFP-CT-B



PUFP-CT-B-2USB



PUFP-CT-BK



PUFP-CT-BK-2USB



PUFP-CT-BK-6PORT



FEATURES & BENEFITS

- **UL recognized** 498, 514A, 943, 1059, and NEC 210.52(C).
CUL recognized 22.2 #'s 42, 158, and 18.1-04.
- UL Listed Receptacle: E60120
- **Pops up** when in use
- **Hides in the box** when not in use
- Complies with **NEC code 406.5(E)** for use in counter tops
- For **residential or commercial** applications
- Installs in **wood floors**
- **Scrub water tight** construction
- All PUFP style supplied with **tamper resistant** receptacles

PUFP-CT-OW



PUFP-CT-OW-2USB



Conforms to UL STD.514A and 498;
Certified to CSA STD.C22.2.; No.18.1-04 and
42-M1984; LEW ELECTRIC FITTINGS CO

Intertek
4004534