



**juno®**

Recessed and Trac Lighting

**Trac-Lites™**

Quality features and stylish designs offer  
affordable trac lighting for today's interiors

**j**®  
JUNO LIGHTING GROUP  
by **Schneider** Electric





## Table of Contents

<b>4</b>	Low Voltage MR16 Spotlights	<b>19</b>	Mounting Accessories
<b>7</b>	Low Voltage Accessories	<b>20</b>	Trac Kits
<b>8</b>	Line Voltage GU10 Spotlights	<b>20</b>	Fixed Monopoints
<b>8</b>	Line Voltage PAR/BR Spotlights	<b>20</b>	Light Bars
<b>15</b>	Decorative Pendants	<b>20</b>	Flexible Trac Kits
<b>16</b>	Trac-Lites™ System	<b>22</b>	Photometric Data
<b>19</b>	Current Limiting Feeds		





## Juno® Trac-Lites™

Juno Trac-Lites bring you all the style, quality and lighting performance Juno is famous for at affordable prices that can be tailored to any budget.

Juno Trac-Lites offer a total system, featuring a wide assortment of low voltage and line voltage trac fixtures, decorative pendants, system components and trac kits. Trac fixtures are available in all the popular classics and in exciting contemporary designs, from metal and glass cones to barn doors, rockets, and cubes.

For added versatility, all Trac-Lites fixtures are compatible with Juno Trac-Master® trac systems and all Juno Trac-Master fixtures may be used on Trac-Lites trac systems.



The perfect blend of form, function and value, Juno Trac-Lites is the system of choice for illuminating many of today's most stylish interiors. No matter what your application, you are sure to find the solutions you need at prices you can afford.





# Low Voltage Spotlights

## MR16

### R707

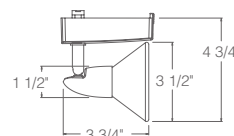
#### Rocket



12V, 20-50W MR16CG

Complete unit includes a miniature 12V, 50VA solid state electronic transformer. Requires 12V MR16 cover glass lamp except when used with T7400 Accessory Holder.

**Finishes:** White (WH) with Opal Frost glass, Black (BL) with Opal Frost glass, Satin Chrome (SC) with Opal Frost glass, Painted Bronze (BZ) with Amber Frost glass



### R708

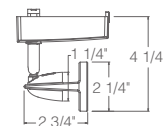
#### Odyssey



12V, 20-50W MR16

Complete unit includes a miniature 12V, 50VA solid state electronic transformer. Accepts one 2" accessory.

**Finishes:** White (WH), Black (BL), Satin Chrome (SC), Painted Bronze (BZ)



### R709

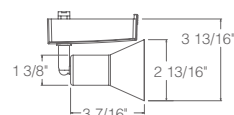
#### Flare



12V, 20-50W MR16CG

Complete unit includes a miniature 12V, 50VA solid state electronic transformer. Requires 12V MR16 cover glass lamp except when used with T7400 Accessory Holder.

**Finishes:** White (WH), Black (BL), Satin Chrome (SC), Painted Bronze (BZ)



### R710

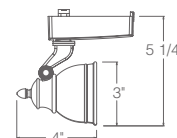
#### Bell



12V, 20-50W MR16CG

Complete unit includes a miniature 12V, 50VA solid state electronic transformer. Integral baffle and deep lamp regression for optimal lamp shielding. Aiming locks help retain fixture position during relamping. Requires 12V MR16 cover glass lamp.

**Finishes:** White (WH), Black (BL), Satin Chrome (SC), Hand-Rubbed Bronze (BZ)





R703



R704



R705



R706



# Low Voltage Spotlights

## MR16

### R703

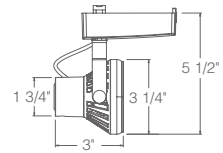
#### Funnel



12V, 20-50W MR16

Complete unit includes a miniature 12V, 50VA solid state electronic transformer. Integral step baffle and deep lamp regression for optimal lamp shielding. Aiming locks help retain fixture position during relamping. Accepts one 2" accessory.

**Finishes:** White (WH), Black (BL), Silver (SL), Painted Bronze (BZ)



### R704

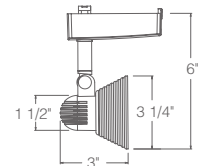
#### Step Glass



12V, 20-50W MR16CG

Complete unit includes a miniature 12V, 50VA solid state electronic transformer. Aiming locks help retain fixture position during relamping. Requires 12V MR16 cover glass lamp except when used with T7400 Accessory Holder.

**Finishes:** White (WH) with Opal Frost glass, Black (BL) with Opal Frost glass, Silver (SL) with Opal Frost glass, Painted Bronze (BZ) with Amber Frost glass



### R705

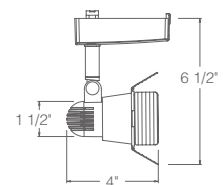
#### Barn Doors



12V, 20-50W MR16CG

Complete unit includes a miniature 12V, 50VA solid state electronic transformer. Barn Doors painted to match fixture finish. Aiming locks help retain fixture position during relamping. Requires 12V MR16 cover glass lamp.

**Finishes:** White (WH), Black (BL), Silver (SL), Painted Bronze (BZ)



### R706

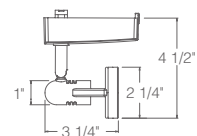
#### Trumpet



12V, 20-50W MR16

Complete unit includes a miniature 12V, 50VA solid state electronic transformer. Accepts one 2" accessory.

**Finishes:** White (WH), Black (BL), Satin Chrome (SC), Painted Bronze (BZ)



All Trac-Lites™ low voltage fixtures are also compatible with Juno Trac-Master® single and two-circuit trac systems.





## Low Voltage Spotlights

### MR16

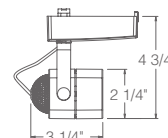
#### R741 Cast Cube



12V, 20-50W MR16

Complete unit includes a miniature 12V, 50VA solid state electronic transformer. Aiming locks help retain fixture position during relamping. Accepts one 2" accessory.

**Finishes:** White (WH), Black (BL), Satin Chrome (SC), Painted Bronze (BZ)



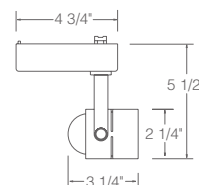
#### R701 Cylinder



12V, 20-50W MR16

Complete unit includes 12V, 50VA solid state electronic transformer. Aiming lock helps retain fixture position during relamping. Accepts one 2" accessory.

**Finishes:** White (WH), Black (BL)



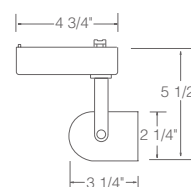
#### R702 Round Back



12V, 20-50W MR16

With black bezel. Complete unit includes 12V, 50VA solid state electronic transformer. Accepts one 1-3/4" accessory.

**Finishes:** White (WH), Black (BL), Painted Bronze (BZ)



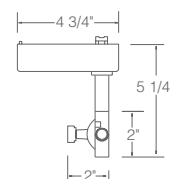
#### R731 Gimbal Ring



12V, 20-50W MR16

Complete unit includes 12V, 50VA solid state electronic transformer. Aiming lock helps retain fixture position during relamping. Accepts one 2" accessory.

**Finishes:** White (WH), Black (BL), Silver (SL), Painted Bronze (BZ)



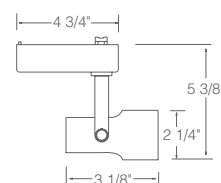
#### R740 Pinchback



12V, 20-50W MR16

Complete unit includes 12V, 50VA solid state electronic transformer. Aiming lock helps retain fixture position during relamping. Accepts one 2" accessory.

**Finishes:** White (WH), Black (BL), Painted Bronze (BZ)







## Low Voltage Accessories



### Accessory Holders

Required for listed fixtures. Accepts two filters, lenses, or louvers except where noted.



### Light Control Lenses

These lenses alter the light distribution of a given lamp, enlarging or elongating it, softening the beam edge or removing striations.



### UV Filters

These museum quality lenses filter out ultraviolet radiation below 400 nanometers to protect fade-sensitive art and objects.



### Color Correction Filters

These lenses correct the light from a halogen lamp, either to warm it up to approximate incandescent, or cool it down to approximate daylight.



### Color Filters

These lenses change white light into colored light and are available in colored glass and more efficient/saturated dichroic glass filters.



### Louvers

Hexcell louvers reduce perceived fixture brightness.

	1 3/4" Diameter	Compatible With	2" Diameter	Compatible With
<b>Accessory Holders</b>			<b>T7400BL, SA</b> Accepts up to 2 accessories	R704, R707, R709
<b>Light Control Lenses</b>				
Linear Spread Lens	T559		T7478	R701, R703, R731, R740 and fixtures with T7400 Accessory Holder
Prismatic Spread Lens	T557		T7477	
Uniformity Lens	T5521		T7421	
Diffusion Lens	T5520		T7420	
UV Filter	T5522		T7422	
<b>Color Correction Filters</b>				
Halogen-to-Incandescent, 2700K	T5518		T7418	
Halogen-to-Daylight, 4250K	T5516		T7416	
<b>Colored Glass Filters</b>				
Medium Pink	T551		T741	
Warm Red			T742	
Daylight Blue			T743	
Medium Blue	T553		T744	
Medium Amber	T555		T745	
Medium Green			T746	
<b>Dichroic Glass Filters</b>				
Red	T5501		T7401	
Medium Green	T5503		T7403	
Medium Blue	T5504		T7404	
Yellow	T5505		T7405	
Magenta	T5506		T7406	
Blue-Green (Cyan)	T5511		T7411	
<b>Hexcell Louver</b>	T5559BL		T7459BL	

All Trac-Lites™ low voltage fixtures are also compatible with Juno Trac-Master® single and two-circuit trac systems.





## Line Voltage Spotlights

### PAR16 / MR16 GU10

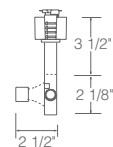
#### R711 Open Back Spotlight



120V, 35-50W PAR16/MR16 GU10

Aiming lock helps retain fixture position during relamping.

**Finishes:** White (WH), Black (BL)



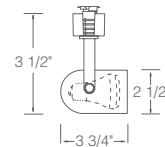
#### R712 Round Back Cylinder



120V, 35-50W PAR16/MR16 GU10

With black bezel.

**Finishes:** White (WH), Black (BL)



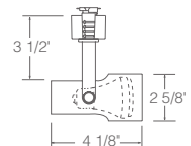
#### R713 Step Cylinder



120V, 35-50W PAR16/MR16 GU10

With black bezel.

**Finishes:** White (WH), Black (BL)



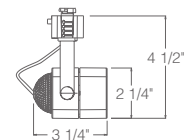
#### R714 Cast Cube



120V, 35-50W PAR16/MR16 GU10

Aiming locks help retain fixture position during relamping.

**Finishes:** White (WH), Black (BL),  
Satin Chrome (SC), Painted Bronze (BZ)







## Line Voltage Spotlights

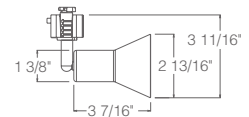
### PAR16 / MR16 GU10

#### R715 Flare



120V, 35-50W PAR16/MR16 GU10

**Finishes:** White (WH), Black (BL),  
Satin Chrome (SC), Painted Bronze (BZ)

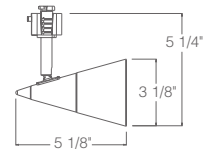


#### R716 Glass Cone



120V, 35-50W PAR16/MR16 GU10

**Finishes:** White (WH) with Opal Frost glass,  
Black (BL) with Opal Frost glass, Satin Chrome  
(SC) with Opal Frost glass, Painted Bronze (BZ)  
with Amber Frost glass

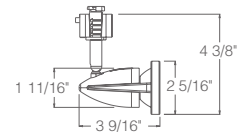


#### R717 Odyssey



120V, 35-50W PAR16/MR16 GU10

**Finishes:** White (WH), Black (BL),  
Satin Chrome (SC), Painted Bronze (BZ)



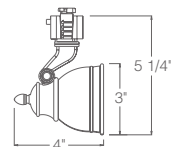
#### R718 Bell



120V, 35-50W PAR16/MR16 GU10

Integral baffle and deep lamp regression  
for optimal lamp shielding. Aiming locks  
help retain fixture position during relamping.

**Finishes:** White (WH), Black (BL), Satin  
Chrome (SC), Hand-Rubbed Bronze (BZ)



All Trac-Lites™ line voltage fixtures feature an on/off switch and are also compatible with Juno Trac-Master® single and two-circuit trac systems.





## Line Voltage Spotlights

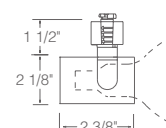
### Universals, Flared Gimbals and Flared Steps

#### R541 Universal



35-50W PAR20/35-75W PAR30

**Finishes:** White (WH), Black (BL),  
Satin Chrome (SC) with Black yoke  
and adapter, Painted Bronze (BZ)

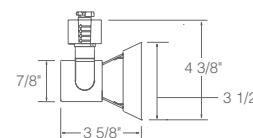


#### R531 Flared Gimbal



35-50W PAR20

**Finishes:** White (WH), Black (BL),  
Satin Chrome (SC) with Black yoke  
and adapter, Painted Bronze (BZ)

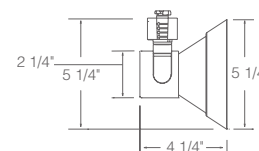


#### R532 Flared Gimbal



35-75W PAR30

**Finishes:** White (WH), Black (BL),  
Satin Chrome (SC) with Black yoke  
and adapter, Painted Bronze (BZ)

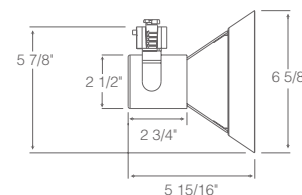


#### R530 Flared Gimbal



45-120W PAR38

**Finishes:** White (WH), Black (BL),  
Satin Chrome (SC) with Silver yoke  
and adapter, Painted Bronze (BZ)

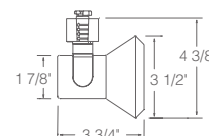


#### R551 Flared Step



35-50W PAR20

**Finishes:** White (WH), Black (BL),  
Satin Chrome (SC) with Black yoke  
and adapter, Painted Bronze (BZ)



All Trac-Lites™ line voltage fixtures feature an on/off switch and are also compatible with Juno Trac-Master® single and two-circuit trac systems.



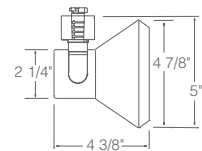


**R552**  
Flared Step



35-75W PAR30

**Finishes:** White (WH), Black (BL),  
Satin Chrome (SC) with Black yoke  
and adapter, Painted Bronze (BZ)

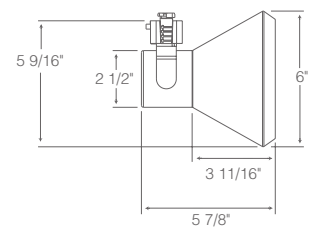


**R550**  
Flared Step



45-120W PAR38

**Finishes:** White (WH), Black (BL),  
Satin Chrome (SC) with Silver yoke  
and adapter, Painted Bronze (BZ)







# Line Voltage Spotlights

## Round Back Cylinders and Flat Back Cylinders

### R500

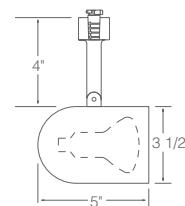
Round Back  
Cylinder



30-50W R20/35-50W PAR20

Without baffle

**Finishes:** White (WH), Black (BL)



### R501

Round Back  
Cylinder



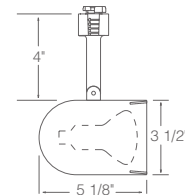
30-50W R20/35-50W PAR20

R501B – With black baffle

**Finishes:** White (WH), Black (BL),  
Polished Brass (PB), Painted Bronze (BZ)

R501W – With white baffle

**Finish:** White (WH)



### R502

Round Back  
Cylinder



45-65W BR30/35-75W PAR30/PAR30L

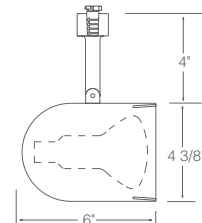
(Short neck PAR30 requires  
T599 Socket Extender).

R502B – With black baffle

**Finishes:** White (WH), Black (BL),  
Painted Bronze (BZ)

R502W – With white baffle

**Finish:** White (WH)



### R521W

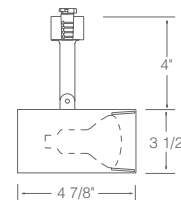
Flat Back  
Cylinder



30-50W R20/35-50W PAR20

With white baffle

**Finish:** White (WH)



### R522W

Flat Back  
Cylinder

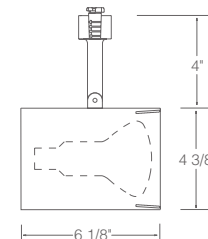


45-65W BR30/35-75W  
PAR30/PAR30L

(Short neck PAR30 requires  
T599 Socket Extender).

With white baffle

**Finish:** White (WH)







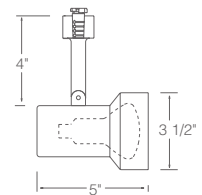
## Line Voltage Spotlights

### Step Cylinders and Open Backs

#### R510 Step Cylinder



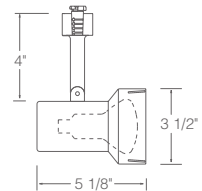
30-50W R20/35-50W PAR20  
Without baffle  
**Finishes:** White (WH), Black (BL)



#### R511 Step Cylinder



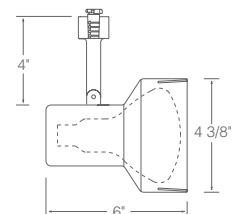
30-50W R20/35-50W PAR20  
R511B – With black baffle  
**Finishes:** White (WH), Black (BL), Polished Brass (PB)  
R511W – With white baffle  
**Finish:** White (WH)



#### R512 Step Cylinder



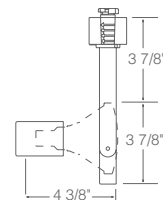
45-65W BR30/35-75W PAR30/PAR30L  
(Short neck PAR30 requires T599 Socket Extender).  
R512B – With black baffle  
**Finishes:** White (WH), Black (BL)  
R512W – With white baffle  
**Finish:** White (WH)



#### R533 Open Back Spotlight



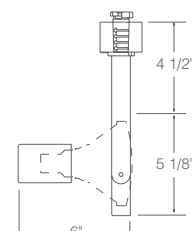
35-75W PAR30  
**Finishes:** White (WH), Black (BL)



#### R534 Open Back Spotlight



45-120W PAR38  
**Finishes:** White (WH), Black (BL)



All Trac-Lites™ line voltage fixtures feature an on/off switch and are also compatible with Juno Trac-Master® single and two-circuit trac systems.







R560



R761



## Decorative Pendants

Glass pendants in both miniature low voltage and larger-scaled line voltage designs provide efficient task lighting over counters and tables while adding a decorative touch to interiors.

### Line Voltage

#### R560 Large Cone



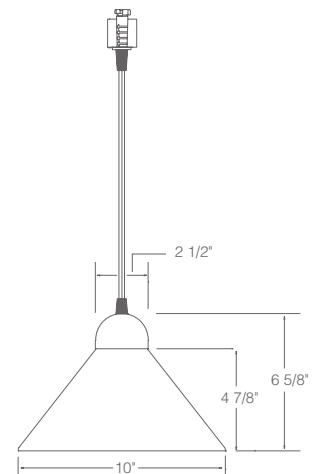
60W A19 Max.

Complete unit includes 48" field adjustable pendant cord and blue or white glass cone shade.

Includes on/off switch.

Lamp supplied by others.

**Finishes:** Blue (BU) with black hardware, White (WH) with white hardware



### Low Voltage

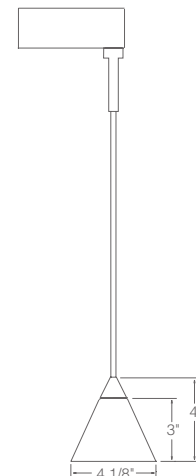
#### R761 Small Cone



12V, 50W Max.  
T4 Halogen GY6.35  
Bi-Pin Capsule

Complete unit includes 12V, 50VA solid state electronic transformer, 48" field adjustable pendant cord, blue or white glass cone shade and 12V, 50W halogen lamp.

**Finishes:** Blue (BU) with black hardware, White (WH) with white hardware

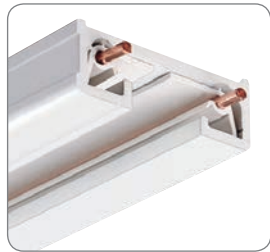


All Trac-Lites™ Decorative Pendants are also compatible with Juno Trac-Master® single and two-circuit trac systems.





# Juno Trac-Lites™ System



Trac sections are constructed of extruded aluminum and offer a low 1/2" profile that unobtrusively hugs the ceiling. Attractive yet affordable, they incorporate all the popular Juno trac features, including debossed polarity indicators for fast, sure alignment. Standard trac sections are available in 2', 4', 6' and 8' lengths with 12-gauge copper conductors. They can be easily cut to custom lengths in the field. A comprehensive selection of electrical feeds and connectors completes this highly versatile system.







# Trac System

## Trac Sections

### 2' Trac

19-7/8" actual length

**R2BL** Black    **R2SL** Silver  
**R2BZ** Bronze    **R2WH** White  
**R2NA** Natural

### 4' Trac

43-7/8" actual length

**R4BL** Black    **R4SL** Silver  
**R4BZ** Bronze    **R4WH** White  
**R4NA** Natural

### 6' Trac

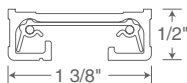
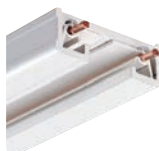
67-7/8" actual length

**R6BL** Black    **R6SL** Silver  
**R6BZ** Bronze    **R6WH** White  
**R6NA** Natural

### 8' Trac

91-7/8" actual length

**R8BL** Black    **R8SL** Silver  
**R8BZ** Bronze    **R8WH** White  
**R8NA** Natural



- Low 1/2" profile fits snugly to ceiling
- Rigid extruded aluminum channel
- 12 gauge solid copper conductors
- 20 Amp capacity
- Debossed polarity line provides visual alignment with fixtures and connector polarity arrows
- One circuit only
- Includes dead end and mounting hardware
- Can be cut to custom length by installer

## Electrical Feeds

### End Feed Connector and Outlet Box Cover

For outlet box feed. Includes outlet box cover, fixture strap and ground screw.

**R21BL** Black    **R21SL** Silver  
**R21BZ** Bronze    **R21WH** White

### End Feed Connector

Feeds Trac from above with Flex or BX. Accepts standard 1/2" electrical connector.

**R38BL** Black    **R38SL** Silver  
**R38BZ** Bronze    **R38WH** White

### Conduit Feed

For surface wiring using standard 1/2" electrical connector.

**R34BL** Black    **R34SL** Silver  
**R34BZ** Bronze    **R34WH** White

### T-Bar End Feed

Wiring compartment contains standard 1/2" K.O.'s. Feeds Trac from above when T-Bar is directly above Trac.

**R36BL** Black    **R36SL** Silver  
**R36BZ** Bronze    **R36WH** White

### Cord and Plug End Feeds

End Feed Connector with 15' 2-wire white cord. Includes surface wire retainers and in-line switch. 7 Amp maximum. Not UL Rated.

**R22BL** Black    **R22SL** Silver  
**R22BZ** Bronze    **R22WH** White

Same as left, but with 3-wire grounded complementary color cords. No switch. 7 Amp maximum. Not UL Rated.

**R122BL** Black  
**R122BZ** Bronze - with black cord & plug  
**R122SL** Silver - with black cord & plug  
**R122WH** White

### Floating Electrical Feed

Permits mounting at any point along Trac at outlet box. Includes floating connector, outlet box cover, and Trac dead end.

**R29BL** Black    **R29SL** Silver  
**R29BZ** Bronze    **R29WH** White

## Connectors

### Miniature Straight Connector

Joins two Trac sections end to end.

**R23BL** Black    **R23SL** Silver  
**R23BZ** Bronze    **R23WH** White

### Flexible Adjustable Joiner

Joins two Trac sections. Can flex to 90° to the left, right, up or down.

**R20BL** Black    **R20SL** Silver  
**R20BZ** Bronze    **R20WH** White

### Adjustable Connector

Joins two Trac sections to make 90° angle or straight run. T27 required for junction box feed. Straight and right angle covers supplied.

**R24BL** Black    **R24SL** Silver  
**R24BZ** Bronze    **R24WH** White

### T Connector

Joins three Trac sections. T27 required for junction box feed.

**R25BL** Black    **R25SL** Silver  
**R25BZ** Bronze    **R25WH** White

### Outlet Box Cover

Use with R24 and R25 for outlet box electrical feed. Includes nipple, locknut and ground screw.

**T27BL** Black    **T27SL** Silver  
**T27BZ** Bronze    **T27WH** White

### Trac Continuation Kit

Two conduit adapters (one left R34 and one right R34) to continue Trac run around or thru obstructions. Use with standard 1/2" electrical connectors.

**R49BL** Black    **R49SL** Silver  
**R49BZ** Bronze    **R49WH** White

### Dead End

Only required when terminating extra field cut-off sections. One supplied with Trac Section.

**R28BL** Black    **R28SL** Silver  
**R28BZ** Bronze    **R28WH** White



# Current Limiting Feeds

Trac-Lites Current Limiting Feeds are the ideal solution for bringing trac applications into conformance with today's stringent commercial energy codes. Current Limiting Feeds – also known as Current Limiting Circuit Breakers – replace standard electrical feeds and are installed at every trac feed location. They help avoid the watts-per-linear-foot penalties found in most energy codes, reducing calculated watts by as much as 75% or more. Current Limiting Circuit Breakers (ordered separately) are available in increments from 0.5A to 14A, permitting them to be closely matched to planned system wattage. Juno remote-mount Current Limiting Subpanels are also available for Trac-Lites systems – please visit our website for details.

## Electrical Feeds



### End Feed

Enables trac to be fed in one direction.

**RCLF11BL** Black  
**RCLF11BZ** Bronze  
**RCLF11SL** Silver  
**RCLF11WH** White



### In-Line Feed

Enables trac to be fed in two directions. Accepts either one or two circuit breakers.

**RCLF21BL** Black  
**RCLF21BZ** Bronze  
**RCLF21SL** Silver  
**RCLF21WH** White

## Current Limiting Circuit Breakers

Catalog #	Description	Wattage	Finish
<b>TCL0.5</b>	0.5A Current Limiting Circuit Breaker	60W	BL, WH
<b>TCL1</b>	1A Current Limiting Circuit Breaker	120W	BL, WH
<b>TCL2</b>	2A Current Limiting Circuit Breaker	240W	BL, WH
<b>TCL3</b>	3A Current Limiting Circuit Breaker	360W	BL, WH
<b>TCL4</b>	4A Current Limiting Circuit Breaker	480W	BL, WH
<b>TCL5</b>	5A Current Limiting Circuit Breaker	600W	BL, WH
<b>TCL6</b>	6A Current Limiting Circuit Breaker	720W	BL, WH
<b>TCL7</b>	7A Current Limiting Circuit Breaker	840W	BL, WH
<b>TCL8</b>	8A Current Limiting Circuit Breaker	960W	BL, WH
<b>TCL9</b>	9A Current Limiting Circuit Breaker	1080W	BL, WH
<b>TCL10</b>	10A Current Limiting Circuit Breaker	1200W	BL, WH
<b>TCL12</b>	12A Current Limiting Circuit Breaker	1440W	BL, WH
<b>TCL14</b>	14A Current Limiting Circuit Breaker	1680W	BL, WH

# Mounting Accessories

A full range of accessories are available to tailor the Trac-Lites system to your exact requirements. Ceiling Pendant Stem Kits permit trac to be mounted at ideal heights without having to lower the entire ceiling plane. Please note that stems can be specified in a variety of lengths and can be coupled for higher-ceiling applications.



### Monopoint - Line Voltage

Accepts Juno 120V Trac fixtures. Mounts directly to outlet box. 4-3/4" dia. x 5/8" high

**R40BL** Black      **R40SL** Silver  
**R40BZ** Bronze      **R40WH** White



### Monopoint - Low Voltage

Accepts Juno 12V Trac-Lites® low voltage trac fixtures and decorative pendants. Mounts directly to outlet box. 6-1/2" dia. x 1/2" high

**R58BL** Black      **R58SL** Silver  
**R58BZ** Bronze      **R58WH** White



### T-Bar Ceiling Pendant Stem Kits\*

Use two for 2', 4' or 6' Trac, or three for 8' Trac. For electrical feed, order Wireway Cover T93.

**T90-12-BL, T90-12-BZ, T90-12-SL, T90-12-WH**  
**T90-18-BL, T90-18-BZ, T90-18-SL, T90-18-WH**  
**T90-24-BL, T90-24-BZ, T90-24-SL, T90-24-WH**  
**T90-36-BL, T90-36-BZ, T90-36-SL, T90-36-WH**  
**T90-48-BL, T90-48-BZ, T90-48-SL, T90-48-WH**

### Rigid Ceiling Pendant Stem Kits\*

Use two for 2', 4', or 6' Trac, or three for 8' Trac. For electrical feed, order Wireway Cover T93.

**T91-12-BL, T91-12-BZ, T91-12-SL, T91-12-WH**  
**T91-18-BL, T91-18-BZ, T91-18-SL, T91-18-WH**  
**T91-24-BL, T91-24-BZ, T91-24-SL, T91-24-WH**  
**T91-36-BL, T91-36-BZ, T91-36-SL, T91-36-WH**  
**T91-48-BL, T91-48-BZ, T91-48-SL, T91-48-WH**

*\*Pendant Stems should not be used to support Trac-Lites Series Trac when used in conjunction with Trac-Master TBX Series Biac trac fixtures.*



### T-Bar Attachment Clips

To attach Trac to inverted tee grid ceiling. Use two for 2' or 4' Trac or three for 6' or 8' Trac.

**R37F** 15/16" T-Bar clip for use with flush tile ceilings.

**R37D** 15/16" T-Bar clip for use with drop tile ceilings.

**R37-9-16** 9/16" T-Bar clip for use with flush or drop tile ceilings.



### Solid Rod Pendant Mounting Kit

Attaches solid 5/16" threaded rod to Trac. Includes plastic cap, mounting bracket, and hardware. Rod not supplied.

**T56BL** Black      **T56SL** Silver  
**T56BZ** Bronze      **T56WH** White



### Pendant Stem Threaded Coupling

Enables multiple pendant stems to be joined for higher-ceiling applications.

**T96BL** Black      **T96SL** Silver  
**T96BZ** Bronze      **T96WH** White



### Pendant Slope Ceiling Adapter

Permits pendant Trac stem to be hung vertically from sloped ceiling. Use pendant kits (T90, T91). Will allow feeding of electrical wires to Trac at up to a 60° angle.

**T94BL** Black      **T94SL** Silver  
**T94BZ** Bronze      **T94WH** White



### Feed Wireway Cover

Use one for each T90 or T91 when using stem for feeding Trac. Feed using R38 or R24. Conceals electrical feed wires from stem to Trac.

**T93BL** Black      **T93SL** Silver  
**T93BZ** Bronze      **T93WH** White





## Trac Kits

Easy-to-install Trac-Lites Kits are available with many popular fixture styles. Everything needed for a professional installation is included in a single box. These kits enable you to produce dramatic lighting effects throughout the home, including kitchens, dens, family rooms and much more.



### Line Voltage Step Cylinder Trac Kits

#### 4' Kit with Three Fixtures

45-65W BR30/35-75W PAR30L Lamps  
One 4' section of trac, floating feed and three white step cylinder fixtures with white baffles.

**R4K3512W-WH** White

#### 4' Kit with Three Fixtures

35-50W PAR20 Lamps  
One 4' section of trac, floating feed, mounting hardware and three white flared step cylinder fixtures.

**R4K3551WH** White

### Low Voltage Round Back Trac Kits

#### 4' Kit with Three Fixtures

12V 20-50W MR16 Lamps  
One 4' section of trac, floating feed and three white low voltage round back cylinder fixtures.

**R4K3702WH** White

### Line Voltage Round Back Trac Kits

#### 2' Kit with Two Fixtures

30-50W R20/35-50W PAR20 Lamps  
One 2' section of trac, floating feed and two white round back cylinder fixtures without baffles.

**R2K2500WH** White

#### 4' Kit with Two Fixtures

30-50W R20/35-50W PAR20 Lamps  
Two 2' sections of trac, floating feed, mini connector and two white round back cylinder fixtures with white baffles.

**R4K2501W-WH** White

#### 4' Kit with Three Fixtures

120V, 35-50W PAR16/MR16 GU10 Lamps  
Two 2' sections of trac, floating feed, mini connector, three white round back cylinder fixtures with black bezels and three 50W GU10 Lamps.

**R4K3712WH** White

## Fixed Monopoints

Monopoints provide optimum mounting flexibility, enabling trac heads to be installed precisely where light is needed.

### Step Cylinder Monopoint



45-65W BR30/35-75W PAR30L Lamp  
(Short neck PAR30 requires T599 Socket Extender)  
White baffle.

**R1F512W-WH** White

### Round Back Cylinder Monopoints



30-50W R20/35-50W PAR20 Lamp  
White baffle.

**R1F501W-WH** White



45-65W BR30/35-75W PAR30L Lamp  
(Short neck PAR30 requires T599 Socket Extender)  
White baffle.

**R1F502W-WH** White

## Light Bars

Light bars include three Step Cylinder trac heads on a 23" fixed-position bar, offering fast, easy installation.

### Three Head Step Cylinder



30-50W R20/35-50W PAR20 Lamps  
White baffle. 23" fixed position bar.

**R3F511W-WH** White





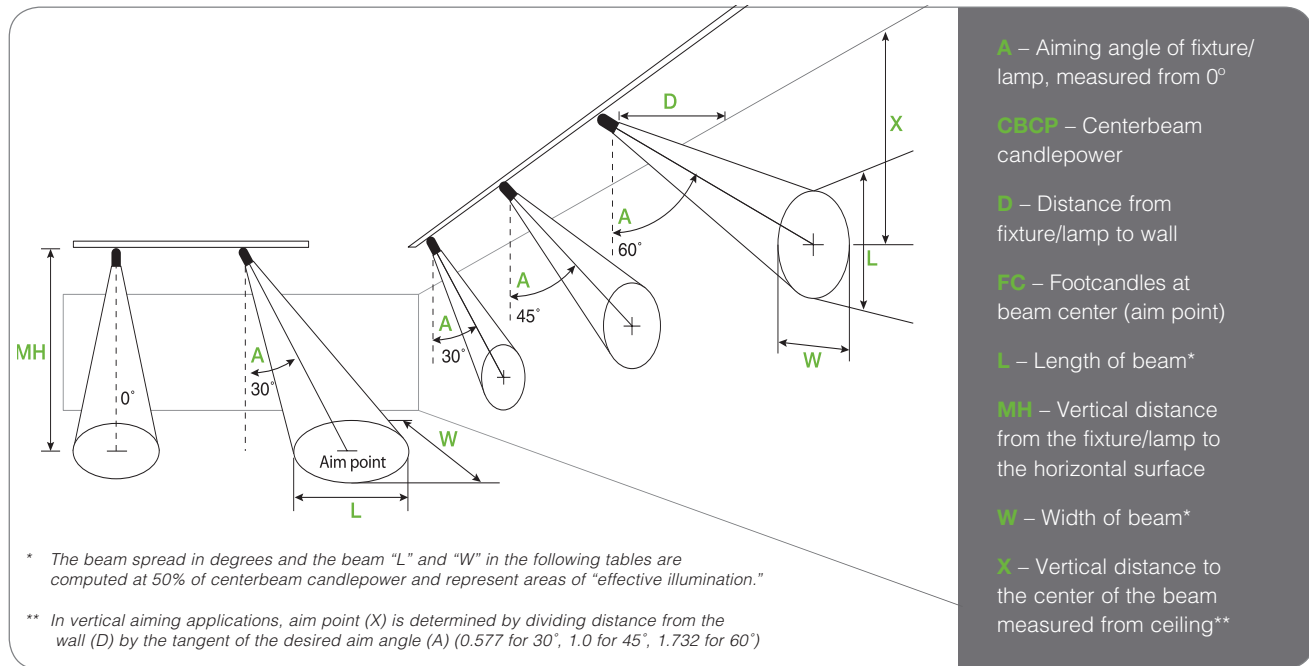








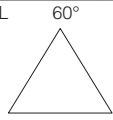



# Photometric Data

The photometric charts on the following pages provide illumination levels (FC) and beam size (in feet) for lamps of various wattages and beam patterns. Data is given for lamps aimed at both horizontal and vertical surfaces.

Maximum candlepower and rated life is also indicated for each lamp. Lamp performance is based on bare lamp photometrics provided by lamp manufacturers. Additional information may be obtained from Juno. The below illustration defines the table headings used on the following pages.






## Lamp Data

					Horizontal Surface								Vertical Surface																
Lamp	Beam Type	Beam Spread	Rated Life	CBCP	0 degrees				30 degrees				30 degrees				45 degrees				60 degrees								
					MH	FC	L	W	FC	L	W	D	FC	X	L	W	FC	X	L	W	D	FC	X	L	W				
<b>50W R20 Incandescent</b> 	FL	45° 	2000	550	2	138	1.7	1.7	89	2.3	1.9	2	17	3.5	13.7	3.3	49	2.0	4.0	2.3	2	89	1.2	2.3	1.9				
					4	34	3.3	3.3	22	4.7	3.8	3	8	5.2	20.5	5.0	22	3.0	6.0	3.5	3	40	1.7	3.5	2.9				
					6	15	5.0	5.0	10	7.0	5.7	4	4	6.9	**	6.6	12	4.0	8.0	4.7	4	22	2.3	4.7	3.8				
					8	9	6.6	6.6	6	9.4	7.7	5	3	8.7	**	8.3	8	5.0	10.0	5.9	5	14	2.9	5.9	4.8				
					10	5	8.3	8.3	4	11.7	9.6	6	2	10.4	**	9.9	5	6.0	12.0	7.0	6	10	3.5	7.0	5.7				
<b>65W BR30 Incandescent</b> 	SP	27° 	2000	1680	2	420	1.0	1.0	273	1.3	1.1	2	53	3.5	4.6	1.9	148	2.0	2.0	1.4	3	121	1.7	2.0	1.7				
					4	105	1.9	1.9	68	2.6	2.2	3	23	5.2	7.0	2.9	66	3.0	3.1	2.0	4	68	2.3	2.6	2.2				
					6	47	2.9	2.9	30	3.9	3.3	4	13	6.9	9.3	3.8	37	4.0	4.1	2.7	5	44	2.9	3.3	2.8				
					8	26	3.8	3.8	17	5.2	4.4	5	8	8.7	11.6	4.8	24	5.0	5.1	3.4	6	30	3.5	3.9	3.3				
					10	17	4.8	4.8	11	6.5	5.5	6	6	10.4	13.9	5.8	16	6.0	6.1	4.1	7	22	4.0	4.6	3.9				
	FL	60° 	2000	510	2	128	2.3	2.3	83	3.5	2.7	1	64	1.7	**	2.3	180	1.0	3.5	1.6	1	331	0.6	1.7	1.3				
					3	57	3.5	3.5	37	5.2	4.0	2	16	3.5	**	4.6	45	2.0	6.9	3.3	2	83	1.2	3.5	2.7				
					4	32	4.6	4.6	21	6.9	5.3	3	7	5.2	**	6.9	20	3.0	10.4	4.9	3	37	1.7	5.2	4.0				
					5	20	5.8	5.8	13	8.7	6.7	4	4	6.9	**	9.2	11	4.0	13.9	6.5	4	21	2.3	6.9	5.3				
					6	14	6.9	6.9	9	10.4	8.0	5	3	8.7	**	11.5	7	5.0	17.3	8.2	5	13	2.9	8.7	6.7				
<b>50W PAR20 Halogen</b> 	SP	10° 	2500	4600	6	128	1.0	1.0	83	1.4	1.2	2	144	3.5	1.4	0.7	407	2.0	0.7	0.5	3	332	1.7	1.7	0.6				
					8	72	1.4	1.4	47	1.9	1.6	3	64	5.0	2.1	1.0	181	3.0	1.1	0.7	4	187	2.3	0.9	0.8				
					10	46	1.7	1.7	30	2.3	2.0	4	36	6.9	2.9	1.4	102	4.0	1.4	1.0	5	120	2.9	1.2	1.0				
					12	32	2.1	2.1	21	2.8	2.4	5	23	8.7	3.6	1.7	65	5.0	1.8	1.2	6	83	3.5	1.4	1.2				
					14	24	2.4	2.4	15	3.3	2.8	6	16	10.4	4.3	2.1	45	6.0	2.1	1.5	7	61	4.0	1.6	1.4				
	FL	30° 	2500	1200	4	75	2.1	2.1	49	2.9	2.5	2	38	3.5	5.5	2.1	106	2.0	2.3	1.5	3	87	1.7	2.2	1.9				
					5	48	2.7	2.7	31	3.7	3.1	3	17	5.2	8.2	3.2	47	3.0	3.5	2.3	4	49	2.3	2.9	2.5				
					6	33	3.2	3.2	22	4.4	3.7	4	9	6.9	10.9	4.3	27	4.0	4.6	3.0	5	31	2.9	3.7	3.1				
					7	25	3.8	3.8	16	5.1	4.3	5	6	8.7	13.7	5.4	17	5.0	5.8	3.8	6	22	3.5	4.4	3.7				
					8	19	4.3	4.3	12	5.9	5.0	6	4	10.4	16.4	6.4	12	6.0	3.9	4.5	7	16	4.0	5.1	4.3				



# Lamp Data



					Horizontal Surface												Vertical Surface																														
Lamp	Beam Type	Beam Spread	Rated Life	CBCP	0 degrees				30 degrees				30 degrees					45 degrees					60 degrees																								
					MH	FC	L	W	FC	L	W	D	FC	X	L	W	FC	X	L	W	D	FC	X	L	W																						
75W PAR30 Halogen		SP	10°	3000	13000	6	361	1.0	1.0	235	1.4	1.2	3	181	5.2	2.1	1.0	511	3.0	1.1	0.7	7	172	4.0	1.6	1.4	8	203	1.4	1.4	132	1.9	1.6	4	102	6.9	2.9	1.4	287	4.0	1.4	1.0	8	132	4.6	1.9	1.6
						10	130	1.7	1.7	84	2.3	2.0	5	65	8.7	3.6	1.7	184	5.0	1.8	1.2	9	104	5.2	2.1	1.8	12	90	2.1	2.1	59	2.8	2.4	6	45	10.4	4.3	2.1	128	6.0	2.1	1.5	10	84	5.8	2.3	2.0
						14	66	2.4	2.4	43	3.3	2.8	7	33	12.1	5.0	2.4	94	7.0	2.5	1.7	11	70	6.4	2.6	2.2	14	66	2.4	2.4	43	3.3	2.8	6	11	10.4	12.5	5.3	30	6.0	5.6	3.8	7	41	4.0	4.2	3.6
						4	194	1.8	1.8	126	2.4	2.0	2	97	3.5	4.2	1.8	274	2.0	1.9	1.3	3	224	1.7	1.8	1.5	6	86	2.7	2.7	56	3.6	3.1	3	43	5.2	6.2	2.7	122	3.0	2.8	1.9	4	126	2.3	2.4	2.0
	NFL	25°	3000	3100	8	48	3.5	3.5	31	4.8	4.1	4	24	6.9	8.3	3.5	69	4.0	3.7	2.5	5	81	2.9	3.0	2.6	10	31	4.4	4.4	20	6.0	5.1	5	16	8.7	10.4	4.4	44	5.0	4.7	3.1	6	56	3.5	3.6	3.1	
					14	66	2.4	2.4	43	3.3	2.8	6	11	10.4	12.5	5.3	30	6.0	5.6	3.8	7	41	4.0	4.2	3.6	14	66	2.4	2.4	43	3.3	2.8	6	11	10.4	12.5	5.3	30	6.0	5.6	3.8	7	41	4.0	4.2	3.6	
					4	125	2.5	2.5	81	3.5	2.9	2	63	3.5	7.2	2.5	177	2.0	2.8	1.8	3	144	1.7	2.6	2.2	6	56	3.8	3.8	36	5.2	4.4	3	28	5.2	10.8	3.8	79	3.0	4.2	2.7	4	81	2.3	3.5	2.9	
					8	31	5.0	5.0	20	7.0	5.8	4	16	6.9	14.4	5.0	44	4.0	5.6	3.6	5	52	2.9	4.3	3.6	10	20	6.3	6.3	13	8.7	7.3	5	10	8.7	18.0	6.3	28	5.0	7.0	4.5	6	36	3.5	5.2	4.4	
	FL	35°	3000	2000	12	14	7.6	7.6	9	10.4	8.7	6	7	10.4	21.6	7.6	20	6.0	8.4	5.4	7	27	4.0	6.1	5.1	16	18	8.6	8.6	12	11.7	9.9	10	6	17.3	**	10.7	16	10.0	11.5	7.6	10	30	5.8	7.3	6.2	
					6	56	3.8	3.8	36	5.2	4.4	3	28	5.2	10.8	3.8	79	3.0	4.2	2.7	4	81	2.3	3.5	2.9	8	31	5.0	5.0	20	7.0	5.8	4	16	6.9	14.4	5.0	44	4.0	5.6	3.6	5	52	2.9	4.3	3.6	
					10	20	6.3	6.3	13	8.7	7.3	5	10	8.7	18.0	6.3	28	5.0	7.0	4.5	6	36	3.5	5.2	4.4	12	14	7.6	7.6	9	10.4	8.7	6	7	10.4	21.6	7.6	20	6.0	8.4	5.4	7	27	4.0	6.1	5.1	
					4	125	2.5	2.5	81	3.5	2.9	2	63	3.5	7.2	2.5	177	2.0	2.8	1.8	3	144	1.7	2.6	2.2	6	56	3.8	3.8	36	5.2	4.4	3	28	5.2	10.8	3.8	79	3.0	4.2	2.7	4	81	2.3	3.5	2.9	
120W PAR38 Halogen		SP	10°	3000	22500	10	225	1.7	1.7	146	2.3	2.0	4	176	6.9	2.9	1.4	497	4.0	1.4	1.0	6	406	3.5	0.9	0.8	12	156	2.1	2.1	101	2.8	2.4	6	78	10.4	4.3	2.1	221	6.0	2.1	1.5	9	180	5.2	1.4	1.2
						14	115	2.4	2.4	75	3.3	2.8	8	44	13.9	5.7	2.8	124	8.0	2.8	2.0	12	101	6.9	1.9	1.6	16	88	2.8	2.8	57	3.7	3.2	10	28	17.3	7.2	3.5	80	10.0	3.5	2.5	15	65	8.7	2.3	2.0
						18	69	3.1	3.1	45	4.2	3.6	12	20	20.8	8.6	4.2	55	12.0	4.2	3.0	18	45	10.4	2.8	2.4	8	72	4.3	4.3	47	5.9	5.0	2	144	3.5	5.5	2.1	407	2.0	2.3	1.5	3	332	1.7	1.5	1.2
						10	46	5.4	5.4	30	7.3	6.2	4	36	6.9	10.9	4.3	102	4.0	4.6	3.0	4	187	2.3	2.9	2.5	12	32	6.4	6.4	21	8.8	7.4	6	16	10.4	16.4	6.4	45	6.0	6.9	4.5	6	83	3.5	4.4	3.7
	FL	30°	3000	4600	14	23	7.5	7.5	15	10.2	8.7	8	9	13.9	21.9	8.6	25	8.0	9.2	6.1	8	47	4.6	5.9	5.0	16	18	8.6	8.6	12	11.7	9.9	10	6	17.3	**	10.7	16	10.0	11.5	7.6	10	30	5.8	7.3	6.2	
					6	56	5.6	5.6	36	8.0	6.5	2	63	3.5	21.5	3.7	177	2.0	4.8	2.6	2	325	1.2	2.7	2.2	8	31	7.5	7.5	20	10.7	8.6	3	28	5.2	**	5.6	79	3.0	7.2	4.0	3	144	1.7	4.0	3.2	
					10	20	9.3	9.3	13	13.4	10.8	4	16	6.9	**	7.5	44	4.0	9.5	5.3	4	81	2.3	5.4	4.3	12	14	11.2	11.2	9	16.1	12.9	5	10	8.7	**	9.3	28	5.0	11.9	6.6	5	52	2.9	6.7	5.4	
					14	10	13.1	13.1	7	18.8	15.1	6	7	10.4	**	11.2	20	6.0	14.3	7.9	6	36	3.5	8.0	6.5	16	18	8.6	8.6	12	11.7	9.9	10	6	17.3	**	10.7	16	10.0	11.5	7.6	10	30	5.8	7.3	6.2	
	WFL	50°	3000	2000	6	56	5.6	5.6	36	8.0	6.5	2	63	3.5	21.5	3.7	177	2.0	4.8	2.6	2	325	1.2	2.7	2.2	8	31	7.5	7.5	20	10.7	8.6	3	28	5.2	**	5.6	79	3.0	7.2	4.0	3	144	1.7	4.0	3.2	
					10	20	9.3	9.3	13	13.4	10.8	4	16	6.9	**	7.5	44	4.0	9.5	5.3	4	81	2.3	5.4	4.3	12	14	11.2	11.2	9	16.1	12.9	5	10	8.7	**	9.3	28	5.0	11.9	6.6	5	52	2.9	6.7	5.4	
					14	10	13.1	13.1	7	18.8	15.1	6	7	10.4	**	11.2	20	6.0	14.3	7.9	6	36	3.5	8.0	6.5	16	18	8.6	8.6	12	11.7	9.9	10	6	17.3	**	10.7	16	10.0	11.5	7.6	10	30	5.8	7.3	6.2	
					6	56	5.6	5.6	36	8.0	6.5	2	63	3.5	21.5	3.7	177	2.0	4.8	2.6	2	325	1.2	2.7	2.2	8	31	7.5	7.5	20	10.7	8.6	3	28	5.2	**	5.6	79	3.0	7.2	4.0	3	144	1.7	4.0	3.2	
20W MR16 12V Halogen Lensed		FL	40°	5000	475	3	53	2.2	2.2	34	3.0	2.5	1	59	1.7	4.8	1.5	168	1.0	1.7	1.0	2	77	1.2	2.0	1.7	5	19	3.6	3.6	12	5.1	4.2	2	15	3.5	9.7	2.9	42	2.0	3.4	2.1	3	34	1.7	3.0	2.5
						7	10	5.1	5.1	6	7.1	5.9	3	7	5.2	14.5	4.4	19	3.0	5.0	3.1	4	19	2.3	4.1	3.4	9	6	6.6	6.6	4	9.1	7.6	4	4	6.9	19.3	5.8	10	4.0	6.7	4.1	5	12	2.9	5.1	4.2
						11	4	8.0	8.0	3	11.2	9.2	5	2	8.7	24.2	7.3	7	5.0	8.4	5.1	6	9	3.5	6.1	5.0	11	4	8.0	8.0	3	11.2	9.2	5	2	8.7	24.2	7.3	7	5.0	8.4	5.1	6	9	3.5	6.1	5.0
						6	253	1.6	1.6	164	2.1	1.8	3	126	5.2	3.3	1.6	357	3.0	1.6	1.1	6	164	3.5	1.1	0.9	8	142	2.1	2.1	92	2.8	2.4	4	71	6.9	4.4	2.1	201	4.0	2.1	1.5	7	121	4.0	1.4	1.2
						10	91	2.6	2.6	59	3.5	3.0	5	46	8.7	5.6	2.6	129	5.0	2.7	1.9	8	92	4.6	1.8	1.5	12	63	3.2	3.2	41	4.2	3.6	6	32	10.4	6.7	3.2	89	6.0	3.2	2.2	9	73	5.2	2.1	1.8
						14	46	3.7	3.7	30	4.9	4.3	7	23	12.1	7.8	3.7	66	7.0	3.8	2.6	10	59	5.8	2.5	2.1	14	46	3.7	3.7	30	4.9	4.3	7	23	12.1	7.8	3.7	66	7.0	3.8	2.6	10	59	5.8	2.5	2.1
	NFL	25°	6000	3200	4	200	1.8	1.8	130	2.4	2.0	2	100	3.5	4.2	1.8	283	2.0	1.9	1.3	4	130	2.3	1.2	1.0	6	89	2.7	2.7	58	3.6	3.1	3	44	5.2	6.2	2.7	126	3.0	2.8	1.9	5	83	2.9	1.8	1.5	
					8	50	3.5	3.5	32	4.8	4.1	4	25	6.9	8.3	3.5	71	4.0	3.7	2.5	6	58	3.5	2.4	2.0	10	32	4.4	4.4	21	6.0	5.1	5	16	8.7	10.4	4.4	45	5.0	4.7	3.1	7	42	4.0	3.0	2.6	
					12	22	5.3	5.3	14	7.2	6.1	6	11	10.4	12.5	5.3	31	6.0	5.6	3.8	8	32	4.6	3.6	3.1	14	22	5.3	5.3	14	7.2	6.1	6	11	10.4	12.5	5.3	31	6.0	5.6	3.8	8	32	4.6	3.6	3.1	
					3	189	2.2	2.2	123	3.0	2.5	2	53	3.5	9.7	2.9	150	2.0	3.4	2.1	3	123	1.7	2.0	1.7	4	106	2.9	2.9	69	4.1	3.4	3	24	5.2	14.5	4.4										



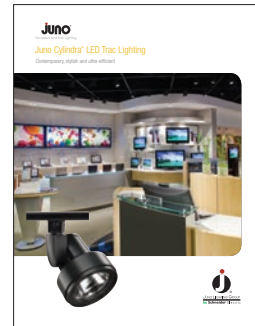
Additional recessed lighting solutions literature can  
be downloaded from [www.junolightinggroup.com](http://www.junolightinggroup.com)



*Juno® Trac Lighting*



*Juno® Arc™ LED  
Trac Fixture*



*Juno® Cylindra™ LED  
Trac Lighting*



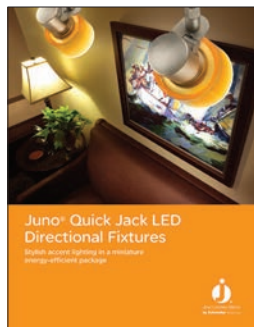
*Juno® LED Wall Wash /  
Flood Fixtures*



*Juno® LED Decorative  
Pendants*



*Juno® LED  
Mini-Pendants*



*Juno® Quick Jack LED  
Directional Fixtures*



*Juno® Trac 12™  
Miniaturized Low Voltage  
Fixtures*



*Juno® Cylindra™ Low  
Voltage LED Trac Lighting*

**Juno®**  
Recessed and Trac Lighting

**indy™**  
Architectural Recessed Lighting

**AccuLite™**  
Commercial and Industrial Lighting

**AcuLux®**  
Precision Recessed Lighting

**Navilite®**  
Exit and Emergency Lighting

**DanaLite**  
Architectural Linear Lighting



**Juno Lighting Group**  
1300 South Wolf Road  
Des Plaines, IL 60018  
Ph: 847.827.9880  
[www.junolightinggroup.com](http://www.junolightinggroup.com)

**Regional Offices & Warehouses**

California  
Illinois  
Indiana  
Pennsylvania  
Texas  
Ontario, CN

LIT-TRLITES



6 61209 06045 7

©2013 JUNO LIGHTING, LLC. The marks appearing in this catalog are registered trademarks of Juno Lighting, LLC unless otherwise noted. Products shown in this brochure are covered by U.S. and international patents and patents pending. Specifications subject to change without notice.

Printed in the U.S.A. LIT-TRLITES Rev. 5/2013