



**HUBBELL**  
Outdoor Lighting





# Quartzlitter® Floods

## 3 SCHEDULED STOCK SHIPMENTS Regional Distribution Center Stock List

Part Number	Catalog Number	UPC Code	Description	CA 03	IL 06	PA 10	SC 07	TX 04	Wt. each	Ctn. Qty.	Price
QL1505	QL-1505	785988464487	Quartzlitter, 900-1500w, Gray, Less lamp	●	●	●	●	●	6.0	EA	
QL1505L15	QL-1505-L15	785988642007	Quartzlitter, Shipped with 240V, 1500w lamp in separate carton		●			●	6.0	EA	
QL505	QL-505	785988464340	Quartzlitter, 300- 500w, Gray, Less lamp	●	●	●	●	●	4.0	EA	
QL505BZ	QL-505-BZ	785988465682	Quartzlitter, 300-500w, Bronze, Less lamp		●				4.0	EA	
QL505L05	QL-505-L05	785988641956	Quartzlitter, Shipped with 120V, 500w lamp in separate carton		●	●			4.0	EA	
QL-5G	QL-5G	785988991839	Wire guard for QL505 Series, Plated		●				1.0	EA	



## Quartz Worklights

## 3 SCHEDULED STOCK SHIPMENTS Regional Distribution Center Stock List

Part Number	Catalog Number	UPC Code	Description	CA 03	IL 06	PA 10	SC 07	TX 04	Wt. each	Ctn. Qty.	Price
QWL1000T	QWL-1000T	785988019151	Quartz worklight, 2 x 500w, 120V Tripod mount, "2 in 1" design, 5' cord set with individual switching, Protective guards, w/ Lamps	●			●		27.0	EA	
QWL150C	QWL-150C	785988004683	Quartz worklight, 150w, 120V, Clamp/hook mount, 5' cord set with switch, Protective guard, w/ Lamp				●	●	2.0	EA	
QWL500S	QWL-500S	785988004690	Quartz worklight, 500w, 120V, Hand stand, 5' cord set with switch, 2 Lamps- 500w / 300w included	●	●		●		4.0	EA	



## "Q" Series Quartz

## 3 SCHEDULED STOCK SHIPMENTS Regional Distribution Center Stock List

Part Number	Catalog Number	UPC Code	Description	CA 03	IL 06	PA 10	SC 07	TX 04	Wt. each	Ctn. Qty.	Price
Q150B	Q-150-B	785988465736	Quartz, 150w, 120V, Bronze, with Lamp	●	●	●			1.5	EA	
Q150W	Q-150-W	785988465743	Quartz, 150w, 120V, White, with Lamp	●	●	●			1.5	EA	
Q300B	Q-300-B	785988465712	Quartz, 300w, 120V, Bronze, with Lamp	●	●	●	●	●	2.6	EA	
Q500B	Q-500-B	785988465699	Quartz, 500w, 120V, Bronze, with Lamp	●	●	●	●	●	3.0	EA	
Q500W	Q-500-W	785988465705	Quartz, 500w, 120V, White, with Lamp	●	●	●			3.0	EA	



# FSL & FML Architectural LED Floodlight



**3 SCHEDULED STOCK SHIPMENTS**

## Regional Distribution Center Stock List

**FALL 2013**

Part Number	Catalog Number	UPC Code	Description	CA 03	IL 06	PA 10	SC 07	TX 04	Wt. each	Ctn. Qty.	Price
FSL7	FSL-7	785988030675	Flood, 27w LED, 120-277V, Wide beam, Bronze	•	•	•		•	4.6	EA	
FSL7PC1	FSL-7-PC1	785988030736	Flood, 27w LED, 120-277V, Wide beam, Bronze	•	•	•		•	4.6	EA	
FML14	FML-14	785988030682	Flood, 53w LED, 120-277V, Wide beam, Bronze	•	•	•		•	7.7	EA	
FML14PC1	FML-14-PC1	785988030743	Flood, 53w LED, 120-277V, Wide beam, Bronze	•	•	•		•	7.7	EA	

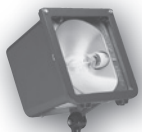


# Facade Flood

**3 SCHEDULED STOCK SHIPMENTS**

## Regional Distribution Center Stock List

Part Number	Catalog Number	UPC Code	Description	CA 03	IL 06	PA 10	SC 07	TX 04	Wt. each	Ctn. Qty.	Price
F042F8	F-042F8	785988005598	Flood, Façade, 42w CFL, 120-277V, with Lamp	•			•		6.0	EA	
F050H1	F-050H1	785988206346	Flood, Façade, 50w PS, 120V, with Lamp		•				8.0	EA	
F070H1	F-070H1	785988206353	Flood, Façade, 70w PS, Quad-Tap, with Lamp	•	•	•	•	•	11.0	EA	
F070S1	F-070S1	785988206315	Flood, Façade, 70w HPS, 120V, with Lamp	•	•	•			5.0	EA	
F100H1	F-100H1	785988206360	Flood, Façade, 100w PS, Quad-Tap, with Lamp	•	•	•	•	•	11.0	EA	
F150S1	F-150S1	785988206339	Flood, Façade, 150w HPS, 120V, with Lamp	•	•	•	•	•	6.0	EA	



# Microliter® Floodlights

**3 SCHEDULED STOCK SHIPMENTS**

## Regional Distribution Center Stock List

Part Number	Catalog Number	UPC Code	Description	CA 03	IL 06	PA 10	SC 07	TX 04	Wt. each	Ctn. Qty.	Price
MIC0070H358	MIC-0070H-358	785988670321	Flood, Compact, 70w PS, Quad-Tap, Bronze, with Lamp		•	•			12.0	EA	
MIC0070S651	MIC-0070S-651	785988670109	Flood, Compact, 70w HPS, 120V, Bronze, with Lamp		•	•			12.0	EA	
MIC0100H358	MIC-0100H-358	785988670116	Flood, Compact, 100w PS, Quad-Tap, Bronze, with Lamp	•	•	•	•	•	13.0	EA	
MIC0150P338	MIC-0150P-338	785988007929	Flood, Compact, 150w PS, Quad-Tap, Narrow beam, Bronze, with Lamp		•	•			14.0	EA	
MIC0150P358	MIC-0150P-358	785988007912	Flood, Compact, 150w PS, Quad-Tap, Medium beam, Bronze, with Lamp	•	•	•	•	•	14.0	EA	
MIC0150S258	MIC-0150S-258	785988670550	Flood, Compact, 150w HPS, 120V, Quad-Tap, Bronze, with Lamp	•		•			15.0	EA	
MIC0150S651	MIC-0150S-651	785988670208	Flood, Compact, 150w HPS, 120V, Bronze, with Lamp	•	•	•			15.0	EA	



# ALF Linear LED Floodlight



**3 SCHEDULED STOCK SHIPMENTS**

## Regional Distribution Center Stock List

Part Number	Catalog Number	UPC Code	Description	CA 03	IL 06	PA 10	SC 07	TX 04	Wt. each	Ctn. Qty.	Price
ALF12LU5KBZ	ALF-12LU-5K-BZ	785988020713	Flood, Linear, 23w LED, 120-277V, Wide, Bronze	•	•	•	•	•	8.0	EA	
ALF6LU5KBZ	ALF-6LU-5K-BZ	785988109168	Flood, Linear, 11w LED, 120-277V, Wide beam, Bronze	•	•	•	•	•	4.0	EA	
ALFW6LU5KBZ	ALFW-6LU-5K-BZ	785988020621	Flood, Wall, 11w LED, 120-277V, Wide, Bronze	•	•	•			5.0	EA	
ALFW6LU5KBZPC	ALFW-6LU-5K-BZ-PC	785988020638	Flood, Wall, 11w LED, 120V, PC, Wide, Bronze	•	•	•			5.0	EA	



## Laramie® LFS Decorative Floods

**QS 10 10-Day Quick Ship Ordering Guide**  
Order Limit Per Fixture Selection: 15

<b>LFS</b>	-		<b>8</b>	-		-	
SERIES	WATTAGE/SOURCE	VOLTAGE	FINISH	OPTIONS			
LFS Laramie Flood Small	PULSE START METAL HALIDE 70P 70w 100P 100w 150P 150w COMPACT FLUORESCENT 42F 42w	8 Quad-Tap* (120, 208, 240, 277V)	BZ Bronze BL Black GR Gray WH White PS Platinum	LP Lamp included			



## Miniliter® LED Floods



**QS 10 10-Day Quick Ship Ordering Guide**  
Order Limit Per Fixture Selection: 15

**QS**  
Available  
Dec. 2013

<b>MHS</b>	-		<b>30L</b>	<b>U</b>	<b>5K</b>	<b>W</b>	<b>BZ</b>	-	
SERIES	MOUNTING	#LEDS	VOLTAGE	CCT	BEAM	FINISH	OPTIONS		
MHS Miniliter®	Y Yoke K Knuckle	30L LEDs	U 120-277V	5K 5100K	W 6x6	BZ Bronze	PC1 Button photocontrol, 120V PC4 Button photocontrol, 277V		



## Miniliter® V Floodlight Series



**3 SCHEDULED STOCK SHIPMENTS**

## Regional Distribution Center Stock List

Part Number	Catalog Number	UPC Code	Description	CA 03	IL 06	PA 10	SC 07	TX 04	Wt. each	Ctn. Qty.	Price
MHSK250P8	MHS-K250P8	785988008018	Flood, Knuckle, 250w PS, Quad-Tap, Bronze, with Lamp	•	•	•			27.0	EA	
MHSK400P5	MHS-K400P5	785988007998	Flood, Knuckle, 400w PS, 480V, Bronze, with Lamp		•				31.0	EA	
MHSK400P8	MHS-K400P8	785988007981	Flood, Knuckle, 400w PS, Quad-Tap, Bronze, with Lamp	•	•	•	•	•	31.0	EA	



## Miniliter® V Floodlight Series

### **35** SCHEDULED STOCK SHIPMENTS **Regional Distribution Center Stock List**

Part Number	Catalog Number	UPC Code	Description	CA 03	IL 06	PA 10	SC 07	TX 04	Wt. each	Ctn. Qty.	Price
MHSY150P8	MHS-Y150P8	785988007974	Flood, Yoke, 150w PS, Quad-Tap, Bronze, with Lamp	•	•	•			21.0	EA	
MHSY150S8	MHS-Y150S8	785988698752	Flood, Yoke, 150w HPS, Quad-Tap, Bronze, with Lamp	•					23.0	EA	
MHSY250P8	MHS-Y250P8	785988007967	Flood, Yoke, 250w PS, Quad-Tap, Bronze, with Lamp	•	•	•	•	•	22.0	EA	
MHSY250S8	MHS-Y250S8	785988698745	Flood, Yoke, 250w HPS, Quad-Tap, Bronze, with Lamp	•	•	•		•	24.0	EA	
MHSY320P8	MHS-Y320P8	785988008056	Flood, Yoke, 320w PS, Quad-Tap, Bronze, with Lamp	•		•			26.0	EA	
MHSY400P5	MHS-Y400P5	785988007950	Flood, Yoke, 400w PS, 480V, Bronze, with Lamp	•	•				26.0	EA	
MHSY400P8	MHS-Y400P8	785988007936	Flood, Yoke, 400w PS, Quad-Tap, Bronze, with Lamp	•	•	•	•	•	26.0	EA	
MHSY400S5	MHS-Y400S5	785988698707	Flood, Yoke, 400w HPS, 480V, Bronze, with Lamp	•				•	28.0	EA	
MHSY400S8	MHS-Y400S8	785988698714	Flood, Yoke, 400w, HPS, Quad-Tap, Bronze, with Lamp	•	•	•		•	28.5	EA	



## Laramie® LFM Decorative Floodlight

### **QS** 10 **10-Day Quick Ship Ordering Guide** Order Limit Per Fixture Selection: 15

CATALOG NUMBER	DESCRIPTION	MOUNT	WT. EACH	WATTS
<b>LFM-K-250P8-BZ</b>	Decorative flood, Knuckle, 250w PS Quad-Tap, Wide beam, with Lamp, Bronze	Knuckle	33.0	250
<b>LFM-K-400P8-BZ</b>	Decorative flood, Knuckle, 400w PS Quad-Tap, Wide beam, with Lamp, Bronze	Knuckle	33.0	400



## Magnuliter® Floodlight MV Series

### **35** SCHEDULED STOCK SHIPMENTS **Regional Distribution Center Stock List**

Part Number	Catalog Number	UPC Code	Description	CA 03	IL 06	PA 10	SC 07	TX 04	Wt. each	Ctn. Qty.	Price
MVK0400P268LP	MVK-0400P-268-LP	785988008216	Flood, Knuckle, 400w PS, Quad-Tap, Bronze, with Lamp		•		•		41.0	EA	
MVK1000H268	MVK-1000H-268	785988656455	Flood, Knuckle, 1000w MH, Quad-Tap, Bronze, with Lamp		•	•	•	•	47.0	EA	
MVM0400P268LP	MVM-0400P-268-LP	785988008193	Flood, Yoke, 400w PS, Quad-Tap, Bronze, with Lamp		•	•			41.0	EA	
MVM0400S268	MVM-0400S-268	785988657209	Flood, Yoke, 400w HPS Quad-Tap, Bronze		•	•			39.0	EA	
MVM1000H265 <sup>1</sup>	MVM-1000H-265	785988655793	Flood, Yoke, 1000w MH, 480V, Bronze, with Lamp	•	•			•	44.0	EA	
MVM1000H268 <sup>1</sup>	MVM-1000H-268	785988652372	Flood, Yoke, 1000w MH, Quad-Tap, Bronze, with Lamp	•	•	•	•	•	44.0	EA	

<sup>1</sup> Cord on MVM style only included



## Magnuliter® Floodlight MV Series

**QS7** 10-Day Quick Ship Ordering Guide  
Order Limit Per Fixture Selection: 15

**MV SERIES** — Vertical lamp position. Features wide, uniform beam distribution. (Coverage is four times set back distance)

CATALOG NUMBER	MOUNT	PHOTOMETRY NEMA/IES H° X V°	WATTAGE	WEIGHT LBS. (KG)	EPA FT <sup>2</sup> (M <sup>2</sup> )
MVM-0400P-265	Trunnion mount, Bronze	7(146°) x 6(119°)	400 PSMH	41 (18.6)	2.3 (.22)
MVM-0400P-268	Trunnion mount, Bronze	7(146°) x 6(119°)	400 PSMH	41 (18.6)	2.3 (.22)
MVK-0400S-268	Slipfitter mount, Bronze	7(144°) x 6(113°)	400 HPS	43 (19.5)	2.3 (.22)



## Laramie® Floodlight LFL Series

**3S** SCHEDULED STOCK SHIPMENTS  
**Regional Distribution Center Stock List**

Part Number	Catalog Number	UPC Code	Description	CA 03	IL 06	PA 10	SC 07	TX 04	Wt. each	Ctn. Qty.	Price
LFLY1000HVW8BZ	LFL-Y-1000HV-W8-BZ	785988018826	Flood, Yoke, 1000w MH, Quad-Tap, Wide beam, Bronze		•				48.0	EA	



## LNC LED Wallpacks



**3S** SCHEDULED STOCK SHIPMENTS  
**Regional Distribution Center Stock List**

Part Number	Catalog Number	UPC Code	Description	CA 03	IL 06	PA 10	SC 07	TX 04	Wt. each	Ctn. Qty.	Price
LNC5LU5K	LNC-5LU-5K	785988020645	Wallpack, Full cut-off, LNC, 13w LED, 120-277V, Bronze	•	•	•	•	•	4.0	EA	
LNC5LU5KPC	LNC-5LU-5K-PC	785988020652	Wallpack, Full cut-off, LNC 13w LED, 120V,, PC , Bronze	•	•	•		•	4.0	EA	
LNC7LU5K31	LNC-7LU-5K-3-1	785988020669	Wallpack, Full cut-off , LNC, 16w LED, 120-277V, 5K, Type III, Bronze	•	•	•		•	4.0	EA	
LNC9LU5K31	LNC-9LU-5K-3-1	785988020683	Wallpack, Full cut-off , LNC, 21w LED, 120-277V, 5K, Type III, Bronze	•	•	•		•	4.0	EA	

**QS5** 5-Day Quick Ship Ordering Guide  
Order Limit Per Fixture Selection: 15

CATALOG NUMBER	DESCRIPTION	CCT	WT. EACH	LUMENS	WATTS
LNC-7LU-5K-3-1-PC1	Wallpack, Full cut-off , LNC, 16w LED, 120-277V, 5K, Type III, Bronze, Photocontrol	5000K	4.0	1140	16
LNC-9LU-5K-3-1-PC1	Wallpack, Full cut-off , LNC, 21w LED, 120-277V, 5K, Type III, Bronze, Photocontrol	5000K	7.0	1460	21

**QS7** 10-Day Quick Ship Ordering Guide  
Order Limit Per Fixture Selection: 15

LNC	-		-	5K	-		-		-	
SERIES	NUMBER OF LEDS/SOURCE/VOLTAGE	CCT	IES DISTRIBUTION	FINISH	OPTIONS					
LNC LNC no uplight	<b>7LU</b> 7 LEDs, up to 1147 lumens, 16.4w input, 120-277V <b>9LU</b> 9 LEDs, up to 1460 lumens, 20.6w input, 120-277V	<b>5K</b> 5000K nominal	<b>3</b> Type III <b>4</b> Type IV	<b>1</b> Bronze <b>2</b> Black <b>4</b> White <b>5</b> Platinum	<b>PC(X)</b> Button photo-control, replace X with voltage, specify 1-120V, 2-208V, 3-240V, 4-277V					



LNC2-12LU



LNC2-18LU

# LNC2 LED Wallpacks



**35** SCHEDULED STOCK SHIPMENTS

## Regional Distribution Center Stock List

Part Number	Catalog Number	UPC Code	Description	CA 03	IL 06	PA 10	SC 07	TX 04	Wt. each	Ctn. Qty.	Price
LNC212LU5K31	LNC2-12LU-5K-3-1	785988030071	Wallpack, Full cut-off, LNC2, 28w LED, 120-277V, 5K, Type III, Bronze	•	•	•	•	•	7.0	EA	
LNC212LU5K31PC1	LNC2-12LU-5K-3-1-PC-1	785988030088	Wallpack, LNC2, 28w LED 120-277V, 5K, 3, Bronze, PC	•	•	•		•	7.0	EA	
LNC218LU5K31	LNC2-18LU-5K-3-1	785988021031	Wallpack, LNC2, 45w LED 120-277V, 5K, 3, Bronze	•	•	•		•	7.0	EA	
LNC218LU5K31PC1	LNC2-18LU-5K-3-1-PC-1	785988030347	Wallpack, LNC2, 45w LED 120-277V, 5K, 3, Bronze, PC	•	•	•		•	7.0	EA	

**QS**<sub>10</sub>

### 10-Day Quick Ship Ordering Guide

Order Limit Per Fixture Selection: 15

<b>LNC2</b>	-		-	<b>4K</b>	-	<b>3</b>	-	<b>1</b>
<b>SERIES</b>	<b>NUMBER OF LEDS/SOURCE/VOLTAGE</b>		<b>CCT</b>	<b>IES DISTRIBUTION</b>		<b>FINISH</b>		
<b>LNC2</b> LNC2 no uplight	<b>12LU</b> 12 LEDs, 29w input, Universal voltage 120-277V <b>18LU</b> 18 LEDs, 45w input, Universal voltage 120-277V		<b>4K</b> 4200K nominal	<b>3</b> Type III		<b>1</b> Bronze		



LCC

LMC

LLC

# Laredo® Architectural Wallpacks



**35** SCHEDULED STOCK SHIPMENTS

## Regional Distribution Center Stock List

Part Number	Catalog Number	UPC Code	Description	CA 03	IL 06	PA 10	SC 07	TX 04	Wt. each	Ctn. Qty.	Price
LMC150P81LP	LMC-150P8-1-LP	785988008315	Full cut-off, wallpack, 150w PS Quad, Bronze, Lamp	•			•		22.0	EA	

**QS**<sub>10</sub>

### 10-Day Quick Ship Ordering Guide

Order Limit Per Fixture Selection: 15

<b>LMC</b>	-		-		-	<b>LP</b>				
<b>SERIES</b>	<b>WATTAGE/SOURCE/VOLTAGE</b>		<b>FINISH</b>		<b>OPTIONS</b>					
<b>LMC</b> Laredo Medium Cut-off	<b>PULSE START METAL HALIDE</b> <b>70P8</b> 70w Quad-Tap <sup>1</sup> 120,208,240,277V <b>100P8</b> 100w Quad-Tap <sup>1</sup> 120,208,240,277V <b>150P8</b> 150w Quad-Tap <sup>1</sup> 120,208,240,277V <b>ELECTRONIC FLUORESCENT</b> <b>42F8</b> <sup>1</sup> 42w, 120-277V <b>84F8</b> <sup>1,2</sup> 84w, 120-277V <b>HIGH PRESSURE SODIUM</b> <b>150S8</b> 150w Quad-Tap <sup>1</sup> 120,208,240,277V		<b>1</b> Bronze <b>2</b> Black <b>3</b> Gray <b>4</b> White <b>5</b> Platinum		<b>LP</b> Lamp included					
<p>1 50/60Hz standard on fluorescent. 2 Two lamp fluorescent units have two electronic ballasts. Field wiring can provide switching for 50% fixture output if desired.</p>			<p>ACCESSORIES - ORDER SEPARATELY</p> <table border="1"> <thead> <tr> <th>CATALOG NUMBER</th> <th>DESCRIPTION</th> </tr> </thead> <tbody> <tr> <td>LMC-SPC</td> <td>Polycarbonate shield</td> </tr> </tbody> </table>				CATALOG NUMBER	DESCRIPTION	LMC-SPC	Polycarbonate shield
CATALOG NUMBER	DESCRIPTION									
LMC-SPC	Polycarbonate shield									

CATALOG NUMBER	DESCRIPTION	SOURCE	WT. EACH	WATTS
LCC-42F8-1-LP	Full cut-off, Wallpack, 42w CFL, 120-277V,	CFL	22.0	42
LLC-250P8-1-LP	Full cut-off, Wallpack, 250w PS, Quad, Bronze, Lamp	PS	22.0	1250



# Laredo LMC LED Wallpacks



## QS5 5-Day Quick Ship Ordering Guide

Order Limit Per Fixture Selection: 15

CATALOG NUMBER	DESCRIPTION	CCT	WT. EACH	LUMENS	WATTS
LMC-30LU-5K-3-1	30LED, 71w, 120-277V, 700mA, 5K, Type 3, Bronze	5000K	22.0	4673	71
LMC-30LU-4K-3-1	30LED, 71w, 120-277V, 700mA, 4K, Type 3, Bronze	4000K	22.0	4259	71

## QS7 10-Day Quick Ship Ordering Guide

Order Limit Per Fixture Selection: 15

CATALOG NUMBER	DESCRIPTION	CCT	WT. EACH	LUMENS	WATTS
LMC-30LU-4K-3-035-1	30LED, 35w, 120-277V, 350mA, 4K, Type 3, Bronze	4000K	22.0	2465	35
LMC-30LU-4K-4-035-1	30LED, 35w, 120-277V, 350mA, 4K, Type 4, Bronze	4000K	22.0	2510	35
LMC-30LU-4K-4-1	30LED, 71w, 120-277V, 700mA, 4K, Type 4, Bronze	4000K	22.0	4108	71
LMC-30LU-5K-3-035-1	30LED, 35w, 120-277V, 350mA, 5K, Type 3, Bronze	5000K	22.0	2709	35
LMC-30LU-5K-4-035-1	30LED, 34w, 120-277V, 350mA, 5K, Type 4, Bronze	5000K	22.0	2758	34
LMC-30LU-5K-4-1	30LED, 71w, 120-277V, 700mA, 5K, Type 4, Bronze	5000K	22.0	4507	71



# NRG® – 1100 Full Cut-off Wallpack



## 35 SCHEDULED STOCK SHIPMENTS Regional Distribution Center Stock List

Part Number	Catalog Number	UPC Code	Description	CA 03	IL 06	PA 10	SC 07	TX 04	Wt. each	Ctn. Qty.	Price
NRG1111B	NRG-1111-B	785988004331	Wallpack, Compact, Full cut-off, 100w PS, 120/277/347V, Bronze, with Lamp	•	•	•		•	13.3	EA	
NRG1111W	NRG-1111-W	785988004348	Wallpack, Compact, Full cut-off, 100w PS, 120/277/347V, White, with Lamp	•					12.0	EA	
NRG1112B	NRG-1112-B	785988004379	Wallpack, Compact, Full cut-off, 100w HPS, 120/277/347V, Bronze, with Lamp	•					10.0	EA	
NRG1112W	NRG-1112-W	785988004386	Wallpack, Compact, Full cut-off, 100w HPS, 120/277/347V, White, with Lamp	•					10.0	EA	
NRG1143B	NRG-1143-B	785988004393	Wallpack, Compact, Full cut-off, 42w CFL 120-277V, Bronze, with Lamp	•	•	•		•	7.0	EA	
NRG1143W	NRG-1143-W	785988004409	Wallpack, Compact, Full cut-off, 42w CFL 120-277V, White, with Lamp	•					7.0	EA	
NRG1151B	NRG-1151-B	785988004294	Wallpack, Compact, Full cut-off, 50w PS, 120/277V, Bronze, with Lamp		•				9.0	EA	
NRG1151W	NRG-1151-W	785988004300	Wallpack, Compact, Full cut-off, 50w PS, 120/277V, White, with Lamp	•					9.0	EA	
NRG1171B	NRG-1171-B	785988004317	Wallpack, Compact, Full cut-off, 70w PS, 120/277/347V, Bronze, with Lamp		•	•			11.0	EA	
NRG1171W	NRG-1171-W	785988004324	Wallpack, Compact, Full cut-off, 70w PS, 120/277/347V, White, with Lamp	•					11.0	EA	
NRG1172W	NRG-1172-W	785988004362	Wallpack, Compact, Full cut-off, 70w HPS, 120/277/347V, White, with Lamp	•					9.0	EA	



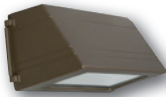
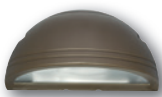


## Geometric Wall Sconces

**3** SCHEDULED STOCK SHIPMENTS

### Regional Distribution Center Stock List

Part Number	Catalog Number	UPC Code	Description	CA 03	IL 06	PA 10	SC 07	TX 04	Wt. each	Ctn. Qty.	Price
TRP150P8FTBZ	TRP-150P8-FT-BZ	785988019489	Trapezoid sconce, 150w PS, Quad, Forward throw, Bronze, Lamp					●	20.0	EA	
TRP150P8WTBZ	TRP-150P8-WT-BZ	785988015962	Trapezoid sconce, 150w PS, Quad, Wide throw, Bronze, Lamp	●				●	20.0	EA	
TRP84F8WTB	TRP-84F8-WT-BZ	785988019496	Trapezoid sconce, 2x42w CFL, Quad, Wide throw, Bronze, Lamp	●				●	18.0	EA	

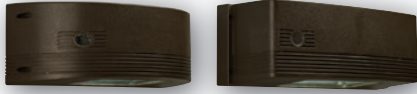


## Compact Wall Sconces

**3** SCHEDULED STOCK SHIPMENTS

### Regional Distribution Center Stock List

Part Number	Catalog Number	UPC Code	Description	CA 03	IL 06	PA 10	SC 07	TX 04	Wt. each	Ctn. Qty.	Price
QSPC13LU5KBZ	QSPC-13LU-5K-BZ	785988019403	Quarter sphere, 23w LED , 120-277V, Bronze		●				8.0	EA	
QSPC42F8BZ	QSPC-42F8-BZ	785988018383	Quarter sphere, 42w CFL, Quad-Tap, Bronze, Lamp					●	6.0	EA	
QSPC42F8PL	QSPC-42F8-PL	785988018390	Quarter sphere, 42w CFL, Quad-Tap, Platinum, Lamp	●					6.0	EA	
QSPC70P8BZ	QSPC-70P8-BZ	785988018652	Quarter sphere, 70w PS, Quad-Tap, Bronze, Lamp	●					10.0	EA	
QSPC70P8PL	QSPC-70P8-PL	785988018369	Quarter sphere, 70w PS, Quad-Tap, Platinum, Lamp	●					10.0	EA	
RDIC13LU5KBZ	RDIC-13LU-5K-BZ	785988019786	Radius Sconce, 23w LED 120-277v, 5K, Brz			●			8.0	EA	
RDIC42F8BZ	RDIC-42F8-BZ	785988018314	Radius, 42w CFL, Quad-Tap, Bronze, Lamp				●		6.0	EA	
RDIC42F8PL	RDIC-42F8-PL	785999018321	Radius, 42w CFL, Quad-Tap, Platinum, Lamp					●	6.0	EA	
RDIC42F9BZBOC	RDIC-42F9-BZ-BOC	785988018345	Radius, 42w CFL, 120/277V, Battery, Bronze, Lamp				●		8.0	EA	
RDIC70P8BZ	RDIC-70P8-BZ	785988018284	Radius, 70w PS, Quad-Tap, Bronze, Lamp	●					11.0	EA	
RDIC70P8PL	RDIC-70P8-PL	785988018291	Radius, 70w PS, Quad-Tap, Platinum, Lamp	●					11.0	EA	
TRPC13LU5KBZ	TRPC-13LU-5K-BZ	785988019762	Trapezoid Sconce, 23w LED 120-277v, 5K, Brz		●				8.0	EA	
TRPC42F8BZ	TRPC-42F8-BZ	785988018451	Trapezoid, 42w CFL, Quad-Tap, Bronze, Lamp		●				6.0	EA	
TRPC42F8PL	TRPC-42F8-PL	785988018437	Trapezoid, 42w CFL, Quad-Tap, Platinum, Lamp	●					6.0	EA	
TRPC42F9BZBOC	TRPC-42F9-BZ-BOC	785988018482	Trapezoid, 42w CFL, 120/277V, Battery, Bronze, Lamp					●	8.0	EA	
TRPC70P8PL	TRPC-70P8-PL	785988018437	Trapezoid, 70w PS, Quad-Tap, Platinum, Lamp	●					11.0	EA	

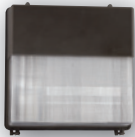


## WM Series Compact Wall Sconces



### Regional Distribution Center Stock List

Part Number	Catalog Number	UPC Code	Description	CA 03	IL 06	PA 10	SC 07	TX 04	Wt. each	Ctn. Qty.	Price
WMR42F1PC	WMR-42F1-PC	785988003983	Sconce, Radius, 42w CFL, 120-277V, Bronze polycarbonate, Full cut-off, with Lamp				●		6.0	EA	
WMR70P6	WMR-70P6	785988003990	Sconce, Radius, 70w PS, 120/277/347V, Bronze polycarbonate, Full cut-off, with Lamp					●	11.0	EA	
WMS42F1PC	WMS-42F1-PC	785988004270	Sconce, Soft corner, 42w CFL, 120-277V, Bronze polycarbonate, Full cut-off, with Lamp	●					6.5	EA	
WMS70P6	WMS-70P6	785988004287	Sconce, Soft corner, 70w PS, 120/277/347V, Bronze polycarbonate, Full cut-off, with Lamp	●					11.0	EA	d



## Wallpack, Polycarbonate Refractor Vertical Lamp Position – PVL3 Perimaliter® III Series



### Regional Distribution Center Stock List

Part Number	Catalog Number	UPC Code	Description	CA 03	IL 06	PA 10	SC 07	TX 04	Wt. each	Ctn. Qty.	Price
PVL3070P18BZL	PVL3-070P-18-BZ-L	785988005888	Wallpack, 70w PS, Quad-Tap, Bronze, with Lamp			●			15.0	EA	
PVL3070S18BZL	PVL3-070S-18-BZ-L	785988005901	Wallpack, 70w HPS, Quad-Tap, Bronze, with Lamp					●	13.0	EA	
PVL3100P18BZL	PVL3-100P-18-BZ-L	785988005918	Wallpack, 100w PS, Quad-Tap, Bronze, with Lamp		●	●		●	15.0	EA	
PVL3100S18BZ	PVL3-100S-18-BZ	785988005925	Wallpack, 100w HPS, Quad-Tap, Bronze					●	18.0	EA	
PVL3100S18BZL	PVL3-100S-18-BZ-L	785988005932	Wallpack, 100w HPS, Quad-Tap, Bronze, with Lamp		●	●			18.0	EA	
PVL3150P18BZ	PVL3-150P-18-BZ	785988008452	Wallpack, 150w PS, Quad-Tap, Bronze			●			20.0	EA	
PVL3150P18BZL	PVL3-150P-18-BZ-L	785988008469	Wallpack, 150w PS, Quad-Tap, Bronze, with Lamp	●	●	●	●	●	20.0	EA	
PVL3150S18BZ	PVL3-150S-18-BZ	785988005956	Wallpack, 150w HPS, Quad-Tap, Bronze	●	●	●			18.0	EA	
PVL3150S18BZL	PVL3-150S-18-BZ-L	785988005963	Wallpack, 150w HPS, Quad-Tap, Bronze, with Lamp	●	●	●			18.0	EA	
PVL3150S51BZL	PVL3-150S-51-BZ-L	785988007844	Wallpack, 150w HPS, Quad-Tap, Bronze, with Lamp		●	●		●	13.0	EA	
PVL330LU5KBZ	PVL3-30LU-5K-BZ	785988029662	Wallpack, 69W LED, 120-277v, 5000K, Bronze	●	●	●		●	12.0	EA	



# CFL Perimaliter® III Polycarbonate Refractor with Optional Egress Back-up

**3** SCHEDULED STOCK SHIPMENTS

## Regional Distribution Center Stock List

Part Number	Catalog Number	UPC Code	Description	CA 03	IL 06	PA 10	SC 07	TX 04	Wt. each	Ctn. Qty.	Price
PVL3242F18BZL	PVL3-242F-18-BZ-L	785988015948	Wallpack, 2x42w CFL, 120-277V, Bronze, with Lamps	•		•			12.0	EA	
PVL3242F18BZL-2BOC	PVL3-242F-18-BZ-L-2BOC	785988015955	Wallpack, 2x42w CFL, 120-277V, with two 0°C batteries, Bronze, with Lamps					•	17.0	EA	



# Perimaliter III® Wallpack, Glass Refractor, Vert. Lamp Position & LED High Performance



**3** SCHEDULED STOCK SHIPMENTS

## Regional Distribution Center Stock List

Part Number	Catalog Number	UPC Code	Description	CA 03	IL 06	PA 10	SC 07	TX 04	Wt. each	Ctn. Qty.	Price
80033990104	800-3399-0104	785988391646	Replacement refractor/door assy for PGM/PGL/PVL, Bronze	•	•	•	•	•	8.0	EA	
PGL250P1281LP	PGL-250P-128-1-LP	785988566662	Wallpack, Glass refractor, 250w PS, Quad-Tap, Bronze, with Lamp		•	•			28.0	EA	
PGL350P1281	PGL-350P-128-1	785988010288	Wallpack, Glass refractor, 350w PS, Quad-Tap, Bronze		•				33.0	EA	
PGL350P1281LP	PGL-350P-128-1-LP	785988566679	Wallpack, Glass refractor, 350w PS, Quad-Tap, Bronze, with Lamp	•	•	•	•	•	30.3	EA	
PGL400S1281LP	PGL-400S-128-1-LP	785988565184	Wallpack, Glass refractor, 400w HPS, Quad-Tap, Bronze, w/ Lamp			•			36.0	EA	
PGM3070P18BZL	PGM3-070P-18-BZ-L	785988008551	Wallpack, Glass refractor 70w PS, Quad-Tap, Bronze, w/ Lamp		•				24.0	EA	
PGM3070S18BZ	PGM3-070S-18-BZ	785988008582	Wallpack, Glass refractor 70w HPS, Quad-Tap, Bronze			•			23.0	EA	
PGM3100P18BZL	PGM3-100P-18-BZ-L	785988005789	Wallpack, Glass refractor 100w PS, Quad-Tap, Bronze, w/ Lamp		•				25.0	EA	
PGM3100S18BZ	PGM3-100S-18-BZ	785988008605	Wallpack, Glass refractor 100w HPS, Quad-Tap, Bronze		•				24.0	EA	
PGM3150P18BZ	PGM3-150P-18-BZ	785988019236	Wallpack, Glass refractor 150w PS, Quad-Tap, Bronze			•			25.0	EA	
PGM3150P18BZL	PGM3-150P-18-BZ-L	785988008568	Wallpack, Glass refractor 150w PS, Quad-Tap, Bronze, w/ Lamp	•	•	•	•	•	25.0	EA	
PGM3150S18BZL	PGM3-150S-18-BZ-L	785988005819	Wallpack, Glass refractor 150w HPS, Quad-Tap, Bronze, w/ Lamp		•	•			25.0	EA	
PGM3250P18BZ	PGM3-250P-18-BZ	785988019243	Wallpack, Glass refractor, 250w PS, Quad-Tap, Bronze			•			27.0	EA	
PGM3250P18BZL	PGM3-250P-18-BZ-L	785988008575	Wallpack, Glass refractor, 250w PS, Quad-Tap, Bronze, w/ Lamp	•	•	•	•	•	27.0	EA	
PGM3250S18BZ	PGM3-250S-18-BZ	785988005864	Wallpack, Glass refractor, 250w HPS, Quad-Tap, Bronze	•					33.0	EA	
PGM3250S18BZL	PGM3-250S-18-BZ-L	785988005871	Wallpack, Glass refractor 250w HPS, Quad-Tap, Bronze, w/ Lamp		•				33.0	EA	
PGM330LU5KBZ	PGM3-30LU-5K-BZ	785988029686	Wallpack, 69W LED, 120-277V, 5000K, Bronze	•	•	•		•	21.0	EA	



# Perimaliter III® Wallpack, Glass Refractor or Polycarbonate Refractor LED Wallpacks



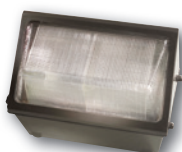
**5-Day Quick Ship Ordering Guide**  
Order Limit Per Fixture Selection: 15

CATALOG NUMBER	DESCRIPTION	CCT	WT. EACH	LUMENS	WATTS
PGM3-30LU-5K-035-BZ	Wallpack, Glass refractor, LED, 120-277V, Bronze	5000K	21.0	3100	35
PVL3-30LU-5K-035-BZ	Wallpack, Polycarbonate refractor, LED, 120-277V, Bronze	5000K	12.0	2600	35



**10-Day Quick Ship Ordering Guide**  
Order Limit Per Fixture Selection: 15

CATALOG NUMBER	DESCRIPTION	CCT	WT. EACH	LUMENS	WATTS
PGM3-30LU-4K-035-BZ	Wallpack, Glass refractor, LED, 120-277V, Bronze	4000K	21.0	2750	35
PGM3-30LU-4K-BZ	Wallpack, Glass refractor, LED, 120-277V, Bronze	4000K	21.0	4700	69
PVL3-30LU-4K-035-BZ	Wallpack, Polycarbonate refractor, LED, 120-277V, Bronze	4000K	12.0	2350	35
PVL3-30LU-4K-BZ	Wallpack, Polycarbonate refractor, LED, 120-277V, Bronze	4000K	12.0	3950	69



## WGH Series – Horizontal Lamp Low Profile Wallpack



## Regional Distribution Center Stock List

Part Number	Catalog Number	UPC Code	Description	CA 03	IL 06	PA 10	SC 07	TX 04	Wt. each	Ctn. Qty.	Price
WGH150P	WGH-150P	785988005680	Wallpack, Glass refractor, 150w PS, Quad-Tap, Bronze, with Lamp	•	•	•	•	•	11.8	EA	
WGH150S	WGH-150S	785988465934	Wallpack, Glass refractor, 150 HPS, Quad-Tap, Bronze, with Lamp	•	•	•	•	•	17.0	EA	
WGH150S120	WGH-150S120	785988005581	Wallpack, Glass refractor, 150 HPS, 120V, Bronze, with Lamp				•	•	16.0	EA	
WGH250P	WGH-250P	785988005697	Wallpack, Glass refractor, 250 PS, Quad-Tap, Bronze, with Lamp	•	•	•	•	•	34.0	EA	
WGH250S	WGH-250S	785988465989	Wallpack, Glass refractor, 250 HPS, Quad-Tap, Bronze, with Lamp	•	•	•			27.0	EA	
WGH320P	WGH-320P	785988005710	Wallpack, Glass refractor, 320 PS, Quad-Tap, Bronze, with Lamp	•	•				34.0	EA	
WGH400P	WGH-400P	785988005727	Wallpack, Glass refractor, 400 PS, Quad-Tap, Bronze, with Lamp	•	•	•	•	•	37.0	EA	
WGH400S	WGH-400S	785988465996	Wallpack, Glass refractor, 400 HPS, Quad-Tap, Bronze, with Lamp		•	•		•	28.0	EA	
WGH84F	WGH-84F	785988005642	Wallpack, Glass refractor, 2x42w CFL, Quad-Tap, Bronze, with Lamps		•	•	•		10.0	EA	

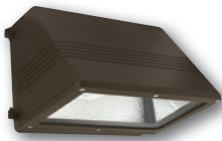


## WGC Series Full Cut-off, Cast Aluminum Wallpack

**35** SCHEDULED STOCK SHIPMENTS

### Regional Distribution Center Stock List

Part Number	Catalog Number	UPC Code	Description	CA 03	IL 06	PA 10	SC 07	TX 04	Wt. each	Ctn. Qty.	Price
WGC100H	WGC-100H	785988465903	Compact full cut-off, 100w PS, Quad, with Lamp, Bronze		●				12.0	EA	
WGC100S	WGC-100S	785988465910	Compact full cut-off, 100w HPS, Quad, with Lamp, Bronze	●					13.0	EA	
WGC42F	WGC-42F	785988019755	Compact full cut-off, 42w CFL, Quad, with Lamp, Bronze	●					8.0	EA	
WGC50H	WGC-50H	785988465880	Compact full cut-off, 50w PS, 120/277V, with Lamp, Bronze					●	11.0	EA	
WGC70H	WGC-70H	785988465897	Compact full cut-off, 70w PS, Quad, with Lamp, Bronze		●				13.0	EA	



## WGM Decorative Full Cut-off Wallpacks

**35** SCHEDULED STOCK SHIPMENTS

### Regional Distribution Center Stock List

Part Number	Catalog Number	UPC Code	Description	CA 03	IL 06	PA 10	SC 07	TX 04	Wt. each	Ctn. Qty.	Price
WGM100P	WGM-100P	785988019656	Mid-size wallpack, full cut-off, 100PS, Quad-Tap, Lamp, Bronze	●					18.0	EA	
WGM150S	WGM-150S	785988019670	Mid-size wallpack, full cut-off, 100HPS, Quad-Tap, Lamp, Bronze	●					18.0	EA	
WGM84F	WGM-84F	785988019687	Mid-size wallpack, full cut-off, 2x42CFL, 120-277v, Lamps, Bronze	●					16.0	EA	
WGM84FMS42	WGM-84F-MS42	785988019694	Mid-size wallpack, full cut-off, 2x42CFL, 120V, Motion, Lamps, Bronze	●					16.0	EA	



## WGL Decorative Full Cut-off Wallpacks

**35** SCHEDULED STOCK SHIPMENTS

### Regional Distribution Center Stock List

Part Number	Catalog Number	UPC Code	Description	CA 03	IL 06	PA 10	SC 07	TX 04	Wt. each	Ctn. Qty.	Price
WGL250P	WGL-250P	785988019700	Large wallpack, full cut-off, 250w PS, Quad-Tap, Lamp, Bronze	●					27.0	EA	
WGL250S	WGL-250S	785988019731	Large wallpack, full cut-off, 250w HPS, Quad-Tap, Lamp, Bronze	●					32.0	EA	
WGL320P	WGL-320P	785988019717	Large wallpack, full cut-off, 320w PS, Quad-Tap, Lamp, Bronze	●					28.0	EA	
WGL400P	WGL-400P	785988019724	Large wallpack, full cut-off, 400w PS, Quad-Tap, Lamp, Bronze	●					30.0	EA	
WGL400S	WGL-400S	785988019748	Large wallpack, full cut-off, 400w HPS, Quad-Tap, Lamp, Bronze	●					32.0	EA	

## Wallpack Accessories

Part Number	Catalog Number	UPC Code	Description	CA 03	IL 06	PA 10	SC 07	TX 04	Wt. each	Ctn. Qty.	Price
PGPS	PG-PS	783936377056	Polycarbonate shield, PGM/ PGL/ PGS			•			10.0	EA	
PGWG	PG-WG	783936377070	Wire guard, PGM/ PGL/ PGS			•			1.0	EA	
PVL3V	PVL3V	785988012077	Visor, Full cut-off, Bronze, PVL3/ PGL/ PRS/ PGS		•	•			6.0	EA	



### NRG® 200B Decorative Compact Wallpack\*



### Regional Distribution Center Stock List

Part Number	Catalog Number	UPC Code	Description	CA 03	IL 06	PA 10	SC 07	TX 04	Wt. each	Ctn. Qty.	Price
NRG204B	NRG-204B	785988019304	Wallpack, Decorative compact, 42w CFL, 120-277V, Bronze, Lamp	•					6.0	EA	
NRG204BMS	NRG-204B-MS	785988020328	Wallpack, Decorative compact, 42w CFL, 120V Motion Sensor, Brz, Lp	•					7.0	EA	
NRG204BPC	NRG-204B-PC	785988021311	Wallpack, Decorative compact, 42w CFL, 120V, Photocontrol, Brz, Lp	•					6.0	EA	
NRG206BPC	NRG-206B-PC	785988022298	Wallpack, Decorative compact, 26w CFL, 120V, Photocontrol, Brz, Lp	•					6.0	EA	
NRG250B	NRG-250B	785988025274	Wallpack, Decorative compact, 50w PS, 120V, Bronze, Lamp	•					6.0	EA	
NRG250BPC	NRG-250B-PC	785988026281	Wallpack, Decorative compact, 50w PS, 120V, Photocontrol, Brz, Lp	•					6.0	EA	

\* Subject to availability



### Compact Wall Fixtures, NRG® Family



### Regional Distribution Center Stock List

Part Number	Catalog Number	UPC Code	Description	CA 03	IL 06	PA 10	SC 07	TX 04	Wt. each	Ctn. Qty.	Price
NRG301B	NRG-301B	785988656714	Wallpack, Vandal resistant, 50w HPS, 120V, with Lamp	•	•	•			6.0	EA	
NRG301BPC	NRG-301B-PC	785988465811	Wallpack, Vandal resistant, 50w HPS, 120V, PC, with Lamp	•	•	•			5.0	EA	
NRG304B	NRG-304B	785988567164	Wallpack, Vandal resistant, 42w CFL, 120V, with Lamp	•	•	•	•	•	5.0	EA	
NRG304BMS	NRG-304B-MS	785988019175	Wallpack, Vandal resistant, 42w CFL, 120V, w/ Motion sensor, Lamp	•					5.0	EA	
NRG304BPC	NRG-304B-PC	785988465835	Wallpack, Vandal resistant, 42w CFL, 120V, PC, with Lamp	•	•	•	•	•	4.0	EA	
NRG304BPCW	NRG-304B-PC-W	785988005611	Wallpack, Vandal resistant, 42w CFL, 120V, PC, White, with Lamp		•				6.0	EA	
NRG306B	NRG-306B	785988567119	Wallpack, Vandal resistant, 26w CFL, 120V, with Lamp			•			6.0	EA	



## Compact Wall Fixtures, NRG® Family



**3S** SCHEDULED STOCK SHIPMENTS

### Regional Distribution Center Stock List

Part Number	Catalog Number	UPC Code	Description	CA 03	IL 06	PA 10	SC 07	TX 04	Wt. each	Ctn. Qty.	Price
NRG306BPC	NRG-306B-PC	785988567102	Wallpack, Vandal resistant, 26w CFL, 120V, PC, with Lamp	•	•	•			6.0	EA	
NRG306BPCW	NRG-306B-PC-W	785988005628	Wallpack, Vandal resistant, 26w CFL, 120V, PC, White, with Lamp					•	6.0	EA	
NRG307B	NRG-307B	785988567157	Wallpack, Vandal resistant, 70w HPS, 120V, with Lamp	•	•	•	•	•	6.0	EA	
NRG307BPC	NRG-307B-PC	785988465828	Wallpack, Vandal resistant, 70w HPS, 120V, PC, with Lamp	•	•	•	•	•	6.0	EA	
NRG312LU5KBZ	NRG-312LU-5K-BZ	785988030026	Wallpack, NRG, 18w LED, 120-277V, 5K, Bronze	•	•	•		•	5.0	EA	
NRG312LU5K-BZPC	NRG-312LU-5K-BZ-PC	785988030033	Wallpack, NRG, 18w LED, 120V, PC, 5K, Bronze	•	•	•		•	5.0	EA	
NRG350B	NRG-350B	785988567133	Wallpack, Vandal resistant, 50w PS, 120V, with Lamp		•	•		•	5.0	EA	
NRG350BPC	NRG-350B-PC	785988567126	Wallpack, Vandal resistant, 50w PS, PC, 120V, with Lamp	•	•	•	•	•	5.0	EA	



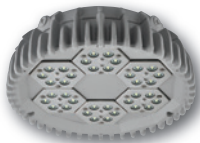
## Compact Refractor Wallpack



**3S** SCHEDULED STOCK SHIPMENTS

### Regional Distribution Center Stock List

Part Number	Catalog Number	UPC Code	Description	CA 03	IL 06	PA 10	SC 07	TX 04	Wt. each	Ctn. Qty.	Price
WGH100H	WGH-100H	785988465859	Glass refractor, 100w PS, Quad-Tap, Bronze, with Lamp	•	•	•	•	•	11.0	EA	
WGH70H	WGH-70H	785988465842	Glass refractor, 70w PS, Quad-Tap, Bronze, with Lamp	•	•	•	•	•	12.0	EA	
WPH100S	WPH-100S	785988465873	Polycarbonate refractor, 100w HPS, 120V, Bronze, with Lamp		•	•		•	8.0	EA	
WPH70S	WPH-70S	785988465866	Polycarbonate refractor, 70w HPS, 120V, Bronze, with Lamp		•		•		16.0	EA	



## Sedona SCP Ceiling Surface Garage

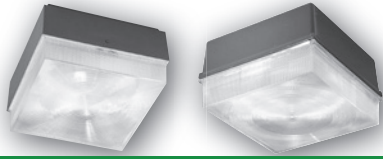


**QS**<sub>10</sub>

### 10-Day Quick Ship Ordering Guide

Order Limit Per Fixture Selection: 15

SCP	-		-	U	-		-	
<b>SERIES</b>	<b>NUMBER OF LEDs</b>	<b>VOLTAGE</b>	<b>CCT</b>	<b>IES DISTRIBUTION</b>	<b>FINISH</b>			
SCP Sedona	<b>18L</b> 18 LEDs, 43w input <b>24L</b> 24 LEDs, 57w input <b>36L</b> 36 LEDs, 86w input	<b>U</b> 120-277V	<b>4K</b> 4200K nominal, 67 CRI <b>5K</b> 5100K nominal, 70 CRI	<b>5M</b> Type V square <b>5R</b> Type V rectangle	<b>DB</b> Bronze <b>WH</b> White <b>GR</b> Gray			



## Lumasquare® Family Performance Ceiling Mounts



### Regional Distribution Center Stock List

Part Number	Catalog Number	UPC Code	Description	CA 03	IL 06	PA 10	SC 07	TX 04	Wt. each	Ctn. Qty.	Price
NRG401	NRG-401	785988642311	Ceiling mount, 10" Sq, 50w HPS, 120V, with Lamp		•	•			7.0	EA	
NRG413P8	NRG-413P8	785988015566	Ceiling mount, 14" Sq, 100w PS, Quad-Tap, with Lamp		•	•			17.0	EA	
NRG415P8	NRG-415P8	785988-00850	Ceiling mount, 14" Sq, 150w PS, Quad-Tap, with Lamp		•	•			19.0	EA	



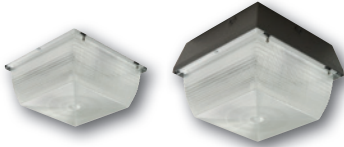
## NRG 4000 LED Lumasquare® Series



**10-Day Quick Ship Ordering Guide**  
Order Limit Per Fixture Selection: 15



CATALOG NUMBER	DESCRIPTION	CCT	WT. EACH	LUMENS	WATTS
NRG-4-30LU-4K-BZ	Ceiling Mount, 71w, 30LED, 4K, 120-277V, Bronze	4000K	13.9	5872	71
NRG-4-30LU-5K-BZ	Ceiling Mount, 71w, 30LED, 5K, 120-277V, Bronze	5000K	13.9	6122	71



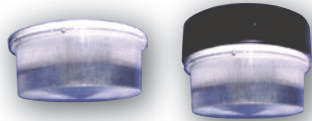
## S Series Vandal Resistant



### Regional Distribution Center Stock List

Part Number	Catalog Number	UPC Code	Description	CA 03	IL 06	PA 10	SC 07	TX 04	Wt. each	Ctn. Qty.	Price
S942F	S9-42F	785988005116	Surface square, Wet location, 42w CFL, 120-277V, Low profile, Polycarbonate refractor, TP screws, Lamp	•			•		1.0	EA	
S970H	S9-70H	785988005086	Surface square, Wet location, 70w PS, Quad-Tap, Polycarbonate refractor, TP screws, Lamp, Bronze	•	•	•		•	10.3	EA	
S12100H	S12-100H	785988005123	Surface square, Wet location, 100w PS, Quad-Tap, Polycarbonate refractor, TP screws, Lamp, Bronze	•	•	•	•	•	15.0	EA	
S12150P	S12-150P	785988008483	Surface square, Wet location, 150w PS, Quad-Tap, Polycarbonate refractor, TP screws, Lamp, Bronze		•	•		•	16.0	EA	
S12150S	S12-150S	785988005147	Surface square, Wet location, 150w HPS, Quad-Tap, Polycarbonate refractor, TP screws, Lamp, Bronze		•				16.0	EA	
S1284F	S12-84F	785988005161	Surface square, Wet location, 2x42w CFL, 120-277V, Low profile, Polycarbonate refractor, TP screws, Lamps				•	•	8.0	EA	





## R Series Vandal Resistant

**3** SCHEDULED STOCK SHIPMENTS

### Regional Distribution Center Stock List

Part Number	Catalog Number	UPC Code	Description	CA 03	IL 06	PA 10	SC 07	TX 04	Wt. each	Ctn. Qty.	Price
R12100H	R12-100H	785988005215	Surface round, Wet location, 100w PS, Quad-Tap, Polycarbonate refractor, TP screws, Lamp, Bronze		•				15.0	EA	
R1284F	R12-84F	785988005246	Surface round, Wet location, 2x42w CFL, 120-277V, Low profile, Polycarbonate refractor, TP screws, Lamps					•	10.0	EA	
R970H	R9-70H	785988005178	Surface round, Wet location, 70w PS, Quad-Tap, Polycarbonate refractor, TP screws, Lamp, Bronze	•					10.0	EA	
R970S	R9-70S	785988005185	Surface round, Wet location, 70w HPS, Quad-Tap, Polycarbonate refractor, TP screws, Lamp, Bronze	•					10.0	EA	



## Multi-purpose Dusk-to-Dawn LED



**3** SCHEDULED STOCK SHIPMENTS

### Regional Distribution Center Stock List

FALL 2013

Part Number	Catalog Number	UPC Code	Description	CA 03	IL 06	PA 10	SC 07	TX 04	Wt. each	Ctn. Qty.	Price
DDL9L1	DDL-9L1	785988030699	Dusk-to-Dawn multi-purpose, 40w LED, 120V, Platinum Silver	•	•	•		•	7	EA	



## DD Series – Dusk to Dawn

**3** SCHEDULED STOCK SHIPMENTS

### Regional Distribution Center Stock List

Part Number	Catalog Number	UPC Code	Description	CA 03	IL 06	PA 10	SC 07	TX 04	Wt. each	Ctn. Qty.	Price
DDR100S	DDR-100S	785988466146	30" Alum arm, 12" Head, 100w HPS, 120V, Kit with lamp		•				7.0	EA	
DDR150S	DDR-150S	785988466153	30" Alum arm, 12" Head, 150w HPS, 120V, Kit with lamp		•			•	7.0	EA	
DDR5AP	DDR-5AP	785988466184	Replacement optical assembly with latches for DDR fixtures		•				2.0	EA	
DDS100P	DDS-100P	785988012060	24" Alum arm, 12" Screw-on optics, 100w PS, 120V, Kit with lamp, UL approved	•	•	•	•	•	6.0	EA	
DDS100PL	DDS-100PL	785988020997	24" Alum arm, 12" Latch-on optic, 100w PS, 120V, Kit with lamp		•					EA	
DDS100S	DDS-100S	785988466122	24" Alum arm, 12" Screw-on optics, 100w HPS, 120V, Kit with lamp, UL approved		•	•			5.0	EA	
DDS150S	DDS-150S	785988466139	24" Alum arm, 12" Screw-on optics, 150w HPS, 120V, Kit with lamp, UL approved	•	•	•	•	•	7.0	EA	
DDS65F	DDS-65F	785988014248	24" Alum arm, 12" Screw-on optics, 65w CFL, 120V, Kit with lamp, UL approved		•				4.0	EA	
DDS70S	DDS-70S	785988466115	24" Alum arm, 12" Screw-on optics, 70w HPS, 120V, Kit with lamp, UL approved				•		5.0	EA	



# LED Vaportite



**35** SCHEDULED STOCK SHIPMENTS

## Regional Distribution Center Stock List

FALL 2013

Part Number	Catalog Number	UPC Code	Description	CA 03	IL 06	PA 10	SC 07	TX 04	Wt. each	Ctn. Qty.	Price
VBGL1	VBGL-1	785988030651	Ceiling mount vaportite, 12w LED, 120-277V, Platinum Silver	•	•	•		•	3.5	EA	
VWGL1	VWGL-1	785988030668	Wall mount vaportite, 12w LED, 120-277V, Platinum Silver	•	•	•		•	3.6	EA	

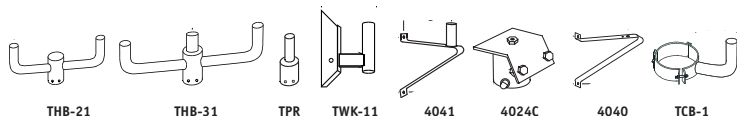


# Wet Location Vaportite

**35** SCHEDULED STOCK SHIPMENTS

## Regional Distribution Center Stock List

Part Number	Catalog Number	UPC Code	Description	CA 03	IL 06	PA 10	SC 07	TX 04	Wt. each	Ctn. Qty.	Price
VBGG-150	VBGG-150	785988467167	Globe & guard, 150w Incandescent, Ceiling/pendant, Platinum	•	•	•	•	•	3.0	EA	
VBGG-300	VBGG-300	785988467174	Globe & guard, 300w Incandescent, Ceiling/pendant, Platinum		•				4.0	EA	
VWGG-150	VWGG-150	785988467181	Globe & guard, 150w Incandescent, Wall box, Platinum	•	•	•	•	•	3.5	EA	
VWGG-300	VWGG-300	785988467198	Globe & guard, 300w Incandescent, Wall box, Platinum		•				4.5	EA	



# Mounting Brackets & Accessories

**35** SCHEDULED STOCK SHIPMENTS

## Regional Distribution Center Stock List

Part Number	Catalog Number	UPC Code	Description	CA 03	IL 06	PA 10	SC 07	TX 04	Wt. each	Ctn. Qty.	Price
4024C	4024C	785988310326	Slipfitter, 2 3/8" Tenon	•	•	•	•	•	2.0	EA	
4040	4040	785988310555	Bracket, Wall mount	•	•	•	•	•	5.0	EA	
4041	4041	785988310579	Bracket, Wall mount	•	•	•		•	7.0	EA	
TCB1	TCB-1	785988496501	Pole clamp-on bracket, Bronze			•		•	15.0	EA	
THB21	THB-21	785988498420	Accessory, Flood, Tenon, Two, Bronze	•	•	•	•	•	12.0	EA	
THB31	THB-31	785988498437	Accessory, Flood, Tenon, Three, Bronze		•			•	30.0	EA	
TPR3	TPR-3	785988500451	Accessory, Flood, Tenon, Reducer, Pole, Bronze			•			8.0	EA	
TPR4	TPR-4	785988500505	Accessory, Flood, Tenon, Reducer, Pole, Bronze			•			9.0	EA	
TWK11	TWK-11	785988502202	Bracket, Wall mount		•			•	15.0	EA	

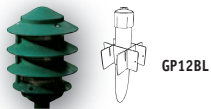


## PAR Lampholders

**3S** SCHEDULED STOCK SHIPMENTS

### Regional Distribution Center Stock List

Part Number	Catalog Number	UPC Code	Description	CA 03	IL 06	PA 10	SC 07	TX 04	Wt. each	Ctn. Qty.	Price
103	103	785988202102	Lampholder, Natural aluminum, 150w max PAR 38, Wet location	•	•				1.0	EA	
103-7	103-7	785988202195	Lampholder, Gray, 150w max PAR 38, Wet location	•	•	•		•	1.3	EA	
10371	103-71	785988465767	Shielded lampholder, Bronze, 150w max PAR 38, Wet location				•		1.0	EA	
10372	103-72	785988202249	Shielded lampholder, Black, 150w max PAR 38, Wet location	•					1.0	EA	
306	306	785988204069	Lampholder, Gray, 300/500w PAR56 end prong lamp by others, Wet location	•					3.0	EA	
30913ML	309-13-ML	785988309139	Bullet lampholder, Shalda green, 175w max PAR/BR40, Univ. aiming					•	4.0	EA	
30914ML	309-14-ML	785988205110	Bullet lampholder, Black, 175w max PAR38/BR40, Univ. aiming	•			•	•	4.0	EA	
309M51ML	309-M51-ML	785988781010	Bullet Lpholder, Bronze, 175w max PAR38/BR40, Univ. aiming	•	•	•	•	•	3.0	EA	
309ML	309-ML	785988205004	Bullet lampholder, Gray, 175w max PAR38/BR40, Univ. aiming					•	3.0	EA	
309S	309-S	785988419203	Deep shield for 309 Series, Black, 7" long, 45° front					•	1.0	EA	
309VGML	309-VG-ML	785988204885	Bullet lampholder, Verdi, 175w PAR 38/BR40, Univ. aiming					•	2.0	EA	
PBT1	PBT-1	785988260119	Photo control, 120V, Button type	•	•	•	•	•	0.5	EA	
PBT234	PBT-234	785988260157	Photo control, 208/240/277V, Button type	•	•	•	•	•	0.5	EA	
S302	S-302	785988473854	Slip-fitter, Pole top, 1/2" Hub, 2 3/8" Slip fit, Gray		•				1.0	EA	
S302M51	S-302-M51	785988473861	Slip-fitter, Pole top, 1/2" Hub, 2 3/8" Slip fit, Bronze		•	•		•	1.0	EA	



## Louverlights – 120V

**3S** SCHEDULED STOCK SHIPMENTS

### Regional Distribution Center Stock List

Part Number	Catalog Number	UPC Code	Description	CA 03	IL 06	PA 10	SC 07	TX 04	Wt. each	Ctn. Qty.	Price
583G	583-G	785988217656	Louver light, Shalda green, 60w max, 3 Tier, Polycarbonate			•		•	2.0	EA	
583MVG	583M-VG	785988217670	Louver light, Verdi green, 75w max, 3 Tier, Aluminum	•					2.0	EA	
GP12BL	GP12BL	785988009817	Ground post, Non-metallic, Removeable cap with 1/2" top hub, Stabilizer kit, Black	•			•		2.0	EA	



## RU Recessed Uplights

**35** SCHEDULED STOCK SHIPMENTS

### Regional Distribution Center Stock List

Part Number	Catalog Number	UPC Code	Description	CA 03	IL 06	PA 10	SC 07	TX 04	Wt. each	Ctn. Qty.	Price
RU100G	RU100G	785988015627	Guard, Non-metallic lens protection for RU100, Bronze	●					3.0	EA	
RU100P8	RU100P8	785988015603	Non-metallic recessed uplight, 100w PS, Quad-Tap, Bronze, with Lamp	●					14.5	EA	
RU100WW	RU100WW	785988015641	Lamp shield, Wall wash, Internal mount for RU100	●					1.0	EA	
RU70G	RU70G	785988015610	Guard, Non-metallic lens protection for RU70, Bronze	●					2.0	EA	
RU70P8	RU70P8	785988015597	Non-metallic recessed uplight, 70w PS, Quad-Tap, Bronze, with Lamp	●					10.0	EA	
RU70WW	RU70WW	785988015634	Lamp shield, Wall wash, Internal mount for RU70	●					1.0	EA	



## 12V LED Lightscaper® Fixtures

**35** SCHEDULED STOCK SHIPMENTS

### Regional Distribution Center Stock List

Part Number	Catalog Number	UPC Code	Description	CA 03	IL 06	PA 10	SC 07	TX 04	Wt. each	Ctn. Qty.	Price
CB150	CB-150	785988015931	150ft, #14 low energy cable, Soft jacket		●	●	●		6.0	EA	
CB75	CB-75	785988015924	75ft, #14 low energy cable, Soft jacket		●	●			4.0	EA	
COAB	CO-AB	785988015757	Cone, Antique bronze, 1.5w LED, 12V, Complete kit: Connector, spike & deck mounts, and 4ft fixture cable		●	●			2.0	EA	
COAG	CO-AG	785988015764	Cone, Antique green, 1.5w LED, 12V, Complete kit: Connector, spike & deck mounts, and 4ft fixture cable	●		●			2.0	EA	
ELAB	EL-AB	785988015870	Eyelid, Antique bronze, 1.5w LED, 12V, 6ft fixture cable & connector	●	●	●		●	1.0	EA	
ELPT	EL-PT	785988015887	Eyelid, Pewter, 1.5w LED, 12V, 6ft fixture cable & connector		●	●			1.0	EA	
FLAB	FL-AB	785988015900	Flood, Antique bronze, 3w LED, 12V, Complete kit: Connector, spike & deck mounts, and 4ft fixture cable	●	●	●	●	●	2.0	EA	
GNAB	GN-AB	785988015771	Greenville, Antique bronze, 1.5w LED, 12V, Complete kit: Connector, spike & deck mounts, and 4ft fixture cable			●		●	2.8	EA	
GNPT	GN-PT	785988015788	Greenville, Pewter, 1.5w LED, 12V, Complete kit: Connector, spike & deck mounts, and 4ft fixture cable		●	●			2.8	EA	
LVT56	LVT56	785988015917	Power center, 120-to-12V, 56w max, 3ft grounded cord set, Photocontrol and timer settings, Non-metallic housing		●	●			4.0	EA	
MSAB	MS-AB	785988015795	Mission, Antique bronze, 1.5w LED, 12V, Complete kit: Connector, spike & deck mounts, and 4ft fixture cable		●	●			3.3	EA	
MSAG	MS-AG	785988015801	Mission, Antique green, 1.5w LED, 12V, Complete kit: Connector, spike & deck mounts, and 4ft fixture cable		●	●			3.3	EA	



## 12V LED Lightscapers® Fixtures

### **35** SCHEDULED STOCK SHIPMENTS **Regional Distribution Center Stock List**

Part Number	Catalog Number	UPC Code	Description	CA 03	IL 06	PA 10	SC 07	TX 04	Wt. each	Ctn. Qty.	Price
RDAB	RD-AB	785988015832	Reidville, Antique bronze, 1.5w LED, 12V, Complete kit: Connector, spike & deck mounts, and 4ft fixture cable	•	•	•			3.3	EA	
RDPT	RD-PT	785988015849	Reidville, Pewter, 1.5w LED, 12V, Complete kit: Connector, spike & deck mounts, and 4ft fixture cable	•		•			3.3	EA	
REPT	RE-PT	785988015894	Recessed uplight, Pewter, 3w LED, 12V, 4ft fixture cable & connector	•	•	•			1.5	EA	
SAAB	SA-AB	785988015818	Saturn, Antique bronze, 1.5w LED, 12V, Complete kit: Connector, spike & deck mounts, and 4ft fixture cable			•			2.8	EA	
SAPT	SA-PT	785988015825	Saturn, Pewter, 1.5w LED, 12V, Complete kit: Connector, spike & deck mounts, and 4ft fixture cable			•			2.8	EA	
SSAB	SS-AB	785988015856	Sea Shell, Antique bronze, Adjustable head, 1.5w LED, 12V, Complete kit: Connector, spike & deck mounts, and 4ft fixture cable		•	•			2.0	EA	
SSAG	SS-AG	785988015863	Sea Shell, Antique green, 1.5w LED, 12V, Complete kit: Connector, spike & deck mounts, and 4ft fixture cable, Adjustable head			•			2.0	EA	
TLAG	TL-AG	785988015740	Tulip, Antique green, 1.5w LED, 12V, Complete kit: Connector, spike & deck mounts, and 4ft fixture cable			•		•	2.3	EA	



## Motion Sensors/ Kits

### **35** SCHEDULED STOCK SHIPMENTS **Regional Distribution Center Stock List**

Part Number	Catalog Number	UPC Code	Description	CA 03	IL 06	PA 10	SC 07	TX 04	Wt. each	Ctn. Qty.	Price
M2LH	M2LH	785988466429	Motion sensor kit, 120V, 300w max, 2 Lampholders, Cover, 130° sensor range, Bronze, Non-metallic	•	•		•	•	1.2	EA	
M2LHW	M2LH-W	785988466436	Motion sensor kit, 120V, 300w max, 2 Lampholders, Cover, 130° sensor range, White, non-metallic	•			•	•	1.2	EA	
MO	MO	785988466405	Motion sensor only, 500w, 120V, 130° sensor range, Bronze	•					0.7	EA	
MOW	MO-W	785988466412	Motion sensor only, 500w, 120V, 130° sensor range, White	•					1.0	EA	
S2LH	S2LH	785988465798	Motion sensor kit, 120V, 300w max, 2 Lampholders, Cover, 270° sensor range, Bronze	•	•	•	•	•	2.0	EA	
S2LHW	S2LH-W	785988704590	Motion sensor kit, 120V, 300w max, 2 Lampholders, Cover, 270° sensor range, White	•	•	•	•	•	2.0	EA	



## Motion Sensors/ Kits



### Regional Distribution Center Stock List

Part Number	Catalog Number	UPC Code	Description	CA 03	IL 06	PA 10	SC 07	TX 04	Wt. each	Ctn. Qty.	Price
SO	SO	785988465804	Motion sensor only, 500w, 120V, 270° sensor range, Bronze	•	•	•			1.5	EA	
SOW	SO-W	785988466306	Motion sensor only, 500w, 120V, 270° sensor range, White	•	•				1.5	EA	



## Decorative Quartz Motion Sensors/ Kits



### Regional Distribution Center Stock List

Part Number	Catalog Number	UPC Code	Description	CA 03	IL 06	PA 10	SC 07	TX 04	Wt. each	Ctn. Qty.	Price
R2LHQ	R2LH-Q	785988012039	Decorative motion sensor kit, 2x75w quartz, Lamps included, 130° detection range, Bronze	•					1.5	EA	
R2LHQW	R2LH-Q-W	785988015658	Decorative motion sensor kit, 2x75w quartz, Lamps included, 130° detection range, White	•					1.5	EA	



## RM Series – Standard Roadway Configurations



### 10-Day Quick Ship Ordering Guide

Order Limit Per Fixture Selection: 15

CATALOG NUMBER	DESCRIPTION	EPA	BALLAST TYPE	WEIGHT	
				LBS.	KGS.
<b>FIXTURE HOUSINGS: BREATHING FELT GASKET OPTICAL SEAL, WITH PHOTOCELL RECEPTACLE, TYPE III DISTRIBUTION</b>					
<b>RMG-3-3</b>	Glass refractor, MN III, Gray	0.6	-	16	7.3
<b>RLG-3-3</b>	Glass refractor, MN III, Gray	1.1	-	25	11.3
<b>BALLAST DOORS: SCREW AND LATCH CLOSURE, HPF BALLAST, ANSI LABEL, UL LISTED</b>					
<b>RMD-25S38-3</b>	250w HPS, Quad, Gray		Auto reg	14	6.4
<b>RLD-40S38-3</b>	400w HPS, Quad, Gray		Auto reg	19	8.6