

LiteStep[®]

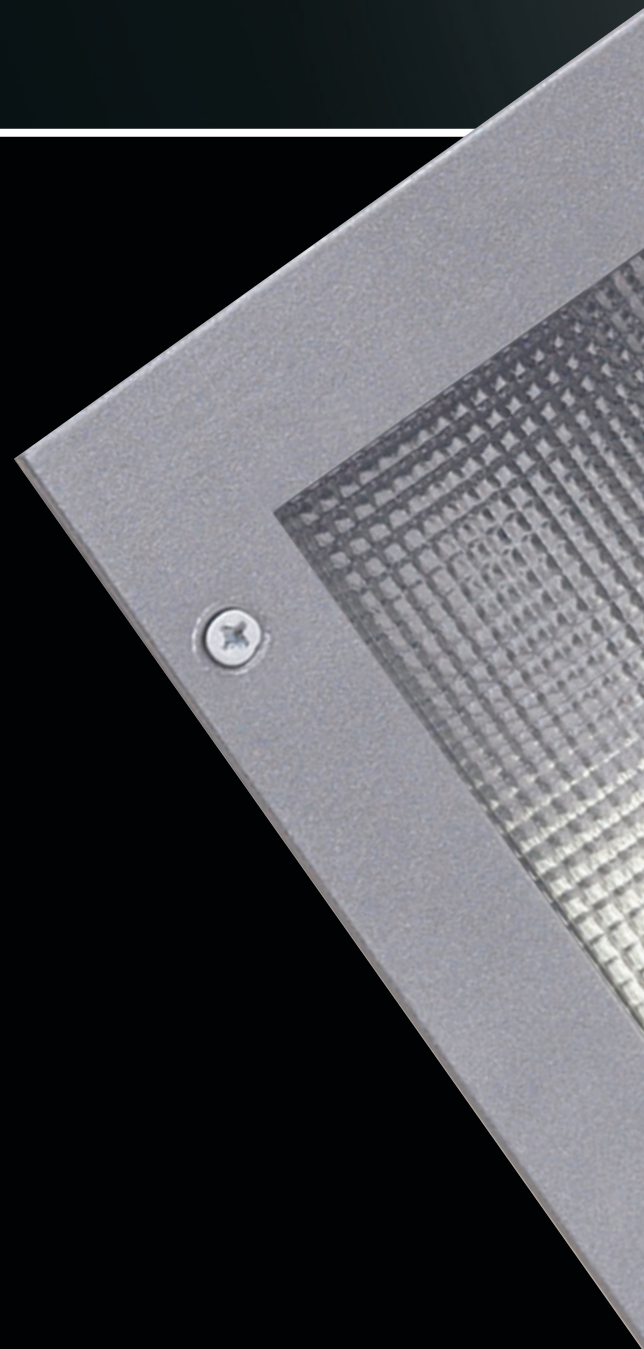
COMMERCIAL STEP LIGHTS

 **prescolite**
ABOVE AND BEYOND

LiteStep®



With die cast and stamped aluminum housing and trim, Prescolite's newest line of step lights is durable enough to match the LEDs' long lifeline, offering a higher efficacy luminaire with environmentally friendly benefits."



A close-up, angled view of a metallic grille, likely part of a lighting fixture. The grille consists of a grid of small, rectangular openings. A single screw is visible in the upper right corner of the frame. The background is dark and out of focus.

C O N T E N T

- 3 LED
- 5 37 Series
- 7 AL Series
- 9 93 Series

LiteStep – Combining sustainability and security with new LED step lights

Manufacturing energy efficient luminaires isn't just about incorporating the latest innovative technologies into new products; it's the right thing to do. That's why Prescolite has introduced LiteStep LED step lights, which feature warm white light, offer a 50,000-hour life at 70 percent lumen maintenance and use significantly less energy than traditional sources.

What's the alternative?

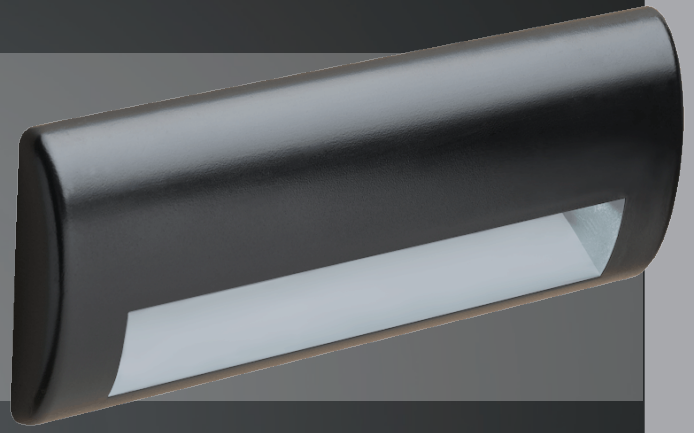
There are other ways of generating light, including using hot filaments that are easily broken or gas filled glass enclosures. However, by converting electrical energy into light, the LED process uses two to five times less power than the typical incandescent lamp, which wastes nearly 95 percent of its energy as heat instead of light. LEDs operate under cooler temperatures to increase safety over similar halogen or incandescent sources while reducing burdening energy bills. And unlike fluorescent lamps, LEDs do not contain mercury. LiteStep offers a variety of solutions for high traffic areas where safety is of utmost importance, including interior and exterior applications for commercial uses, retail projects, and residential applications. Step lights allow for added security by illuminating stairways, walkways and building exteriors. Additionally, because the fixtures are small and compact, step lights are one of the best application's to showcase LED technology. Prescolite is proud to be a proponent of environmental sustainability and excited to introduce LiteStep to its existing LED product family.

Prescolite understands that different projects require different approaches, resources and tools. That's why LiteStep offers three levels of step lights to assist you in accommodating a wide variety of needs. Each level provides a quality product with a solid-state electronic 350mA constant current FCC class 2B driver, as well as a high-performing diffusing lens. However, each has a unique face plate and varies in the amount of light distribution, wattage consumption, efficiency and efficacy they provide, allowing you to decide which is right for you for your next project.



LiteStep[®]

LED



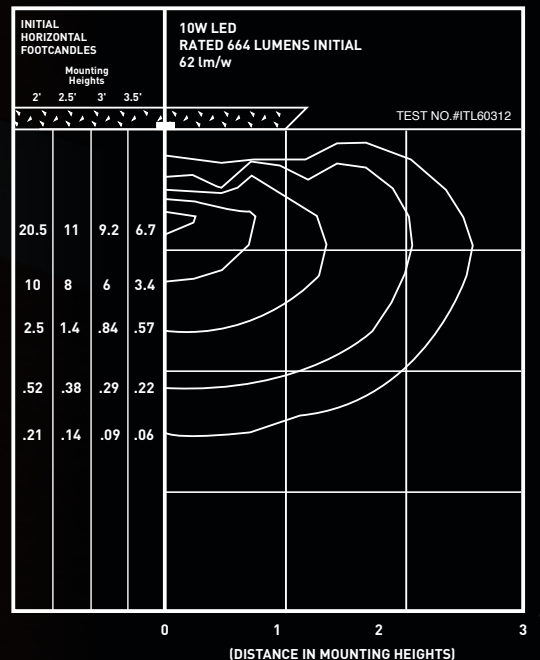
SLLED1 – With a modern low profile die cast aluminum face plate, this high output, 10watt LED step light is the ultimate in the LiteStep collection. The highly efficient SLLED1 offers the smoothest and broadest light distribution pattern and also features the highest fixture efficacy at 62 lumens per watt.

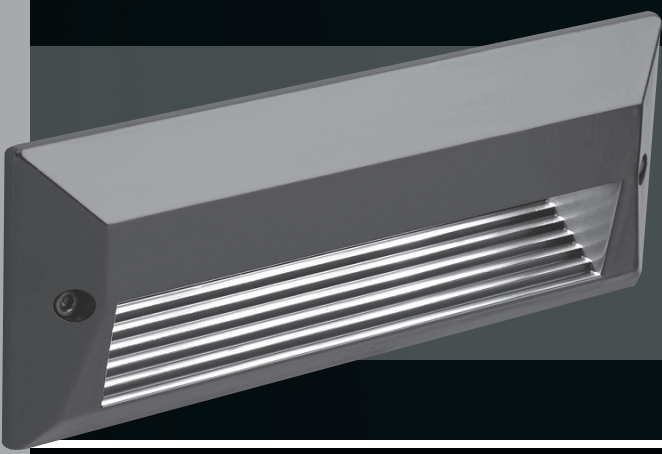
SLLED1 – High output 10watt LED step light

- LEDS:** 3(3W) LED modules mounted on a fixed aluminum heat sink to ensure optimal thermal and optical performance and 50,000-hour life at 70% lumen maintenance. Available in either 3500K or 5000K color temperatures.
- Trim Option:** Die Cast aluminum. Solite lens for optimal light diffusion. Silicone gasket on trim and lens. For wet location compliance.
- Housing:** Die cast aluminum with clear anodized finish. 1/2" NPT conduit port located on either side of housing. Silicone gasket to ensure wet location compliance.
- Finish:** Specify trim in Black (BL), White (WH), Zet (Z) or Bronze (BR).
- Driver:** 120V solid state electronic 350mA constant current FCC class 2B driver. 50,000 hour minimum anticipated life. Rated for -40 degrees Celsius starting temperature. Driver is accessible through the housing for servicing.
- Labels:** CSA C/US listed. Wet location. Approved for through wiring and Non-IC rated. Suitable for concrete pour. Approved for exterior and interior installations.
- Dimensions:** Housing: 8"W X 3" H X 3-3/4"D
Trim: 9-3/8"W X 3-1/2"H X 3/4"D

Specification example: SLLED135KBL

SLLED1 STEP LIGHT





LED

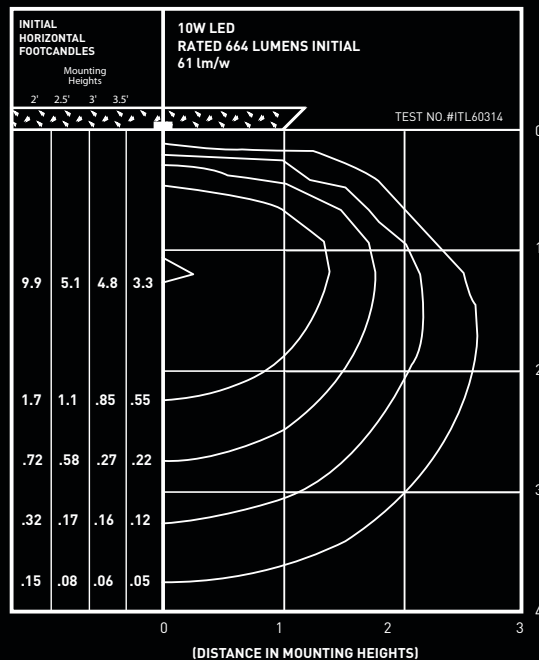
SLLED2 – SLLED2 is LiteStep's premium level and provides a smooth, broad light distribution. Made of modern die cast aluminum, the recessed 10watt LED step light offers energy efficient benefits, as well as a high efficacy of 61 lumens per watt. Additionally SLED2 is IP45 rated.

SLLED2 – Recessed 10watt LED step light

- LEDS:** 3(3W) LED modules mounted on a fixed aluminum heat sink to ensure optimal thermal and optical performance and 50,000-hour life at 70% lumen maintenance. Available in either 3500K or 5000K color temperatures.
- Trim Option:** Die Cast aluminum. Solite lens for optimal light diffusion. Silicone gasket on trim and lens. For wet location and IP45 compliance.
- Housing:** Die cast aluminum with durable baked powder coat. 1/2" NPT conduit port located on either side of housing. Silicone gasket to ensure wet location and IP45 compliance.
- Finish:** Specify trim in Black (BL), White (WH), Zet (Z) or Bronze (BR).
- Driver:** 120V solid state electronic 350mA constant current FCC class 2B driver. 50,000 hour minimum anticipated life. Rated for -40 degrees Celsius starting temperature. Driver is accessible through the housing for servicing.
- Labels:** CSA C/US listed. Wet location. Approved for through wiring and Non-IC rated. Suitable for concrete pour. Approved for exterior and interior installations. IP45 rated.
- Dimensions:** Housing: 8"W X 3" H X 3-3/4"D
Trim: 9-3/8"W X 3-1/2"H X 3/4"D

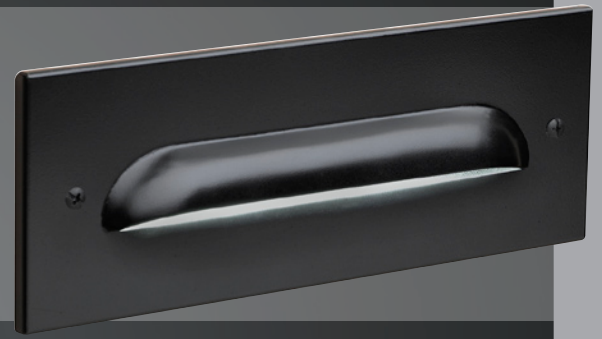
Specification example: SLLED235KBL

SLLED2 STEP LIGHT



FEATURES

- Stamped aluminum housing.
- Stamped aluminum face plates.
- Wet location.
- Four finish options: zet (metallic silver), black, white, or bronze.
- High efficiency and long life (50K hours).



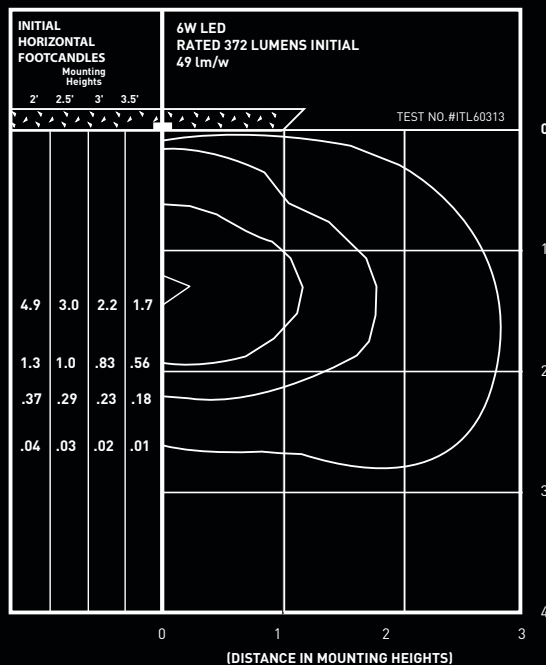
SLLED3 – Offering adequate levels of light distribution, wattage consumption, and efficiency, SLLED3 is the primary level of the LiteStep step lights. SLLED3 is the most economically priced LED steplight. Additionally, SLLED3 provides 49 lumens per watt and is IP55 rated.

SLLED3 – Residential 6watt LED step light

- LEDS:** 2(3W) LED modules mounted on a fixed aluminum heat sink to ensure optimal thermal and optical performance and 50,000-hour life at 70% lumen maintenance. Available in either 3500K or 5000K color temperatures.
- Trim Option:** Stamped aluminum. Solite lens for optimal light diffusion. Silicone gasket on trim and lens. For wet location and IP56 compliance.
- Housing:** Die cast aluminum with durable black baked powder coat finish 1/2" NPT conduit port located on either side of housing. Silicone gasket to ensure wet location and IP56 compliance.
- Finish:** Specify trim in Black (BL), White (WH), Zet (Z) or Bronze (BR).
- Driver:** 120V solid state electronic 350mA constant current FCC class 2B driver 50,000 hour minimum anticipated life. Rated for -40 degrees Celsius starting temperature. Driver is accessible through the housing for servicing.
- Labels:** CSA C/US listed. Wet location. Approved for through wiring and Non-IC rated. Suitable for concrete pour. Approved for exterior and interior installations. IP56 rated
- Dimensions:** Housing: 7-3/4"W X 2-1/2" H X 3-1/2"D
Trim: 8-1/2"W X 3-1/4"H X 3/4"D

Specification example: SLLED335KBL

SLLED3 STEP LIGHT



• 37 & A L S E R I E S
• I N C A N D E S C E N T A N D C F L

37

FEATURES

- Die cast aluminum housing and trim construction.
- Neoprene gaskets.
- Wet location.
- Gasketed die cast splice box (optional on 37 series).
- Three finish options: zet (metallic silver), black, or bronze.
- 22 gauge galvanized steel mounting brackets,
- Suitable for concrete pour.
- Incandescent or CFL lamp options.

37G

RECESSED LITESTEP Incandescent Non-IC

Housing/Lamp: 37G- Two 25W A-19 incandescent

Trim Options: LF- Die cast aluminum louvered faceplate with prismatic glass
OF- Die cast aluminum open faceplate with prismatic glass

Finish: Zet (Z), metallic silver, Black (BL), or Bronze (BZ)

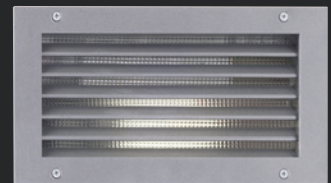
Housing Construction: Die cast aluminum

Labels: UL, CSA listed. Wet location and concrete pour.
Suitable for through wiring

Options: TPS- Tamperproof screws

Dimensions: Housing: 10-1/8" W X 5-1/8" H X 3-7/8" D
Trim: 10-5/8" W X 5-5/8" H X 11/32" D

Specification Example: 37G-LF Z





37CF13 (120V, Twin Tube CFL)
37CFQ13EB (Quad Tube CFL)
37CFQ18EB (Quad Tube CFL)
37CFQ26EB (Quad Tube CFL)
37CFT26EB (Triple Tube CFL)

RECESSED LITESTEP

Twin, Quad, and Triple Tube Compact Fluorescent Non-IC

Housing/Lamp: 37CF13- One 13W twin tube, 2 pin CFL
 37CFQ13EB- One 13W quad tube, 4 pin CFL
 37CFQ18EB- One 18W quad tube, 4 pin CFL
 37CFQ26EB- One 26W quad tube, 4 pin CFL
 37CFT26EB- One 26W triple tube, 4 pin CFL

Ballast: 37CF13- 13W specify 120V or 277V HPF
 37CFQ13EB- 13W 120V/277V electronic ballast
 37CFQ18EB- 18W 120V/277V electronic ballast
 37CFQ26EB- 26W 120V/277V electronic ballast
 37CFT26EB- 26W 120V/277V electronic ballast

Trim Options: LF- Die cast aluminum louvered faceplate with prismatic glass
 OF- Die cast aluminum open faceplate with prismatic glass

Finish: Zet (Z, metallic silver), Black (BL), or Bronze (BZ)

Housing Construction: Die cast aluminum

Labels: UL, CSA listed. Wet location and concrete pour.

Options: TW- Gasketed die cast splice box for through wire capability
 TPS- Tamperproof screws

Dimensions: Housing: 10-1/8" W X 5-1/8" H X 3-7/8" D
 Trim: 10-5/8" W X 5-5/8" H X 11/32" D

Specification Example: 37CFQ13EBTW-LFZ



ALCF9 (120V or 277V, Twin Tube CFL)
ALCFQ13 (120V or 277V Quad Tube CFL)
ALCFQ13EB (Quad Tube CFL)

RECESSED LITESTEP

Twin and Quad Tube Compact Fluorescent Non-IC

Housing/Lamp: ALCF9- One 9W twin tube, 2 pin CFL
 ALCFQ13- One 13W quad tube, 2 pin CFL
 ALCFQ13EB- One 13W quad tube, 4 pin CFL

Trim Options: Die cast aluminum
 LFG- Faceplate similar to ALE style. Louvered faceplate with prismatic glass.
 HLF6- Hinged louvered faceplate with prismatic glass.
 HLF20- Hinged louvered faceplate with prismatic glass and two convenience outlets.
 HLF10S- Hinged louvered faceplate with prism. glass, one convenience outlet, and one toggle switch.

Housing Construction: Welded steel

Finish: Black (BL), or Bronze (BZ)

Ballast: ALCF9- Specify 120V or 277HPF magnetic ballast
 ALCFQ13- Specify 120V or 277V HPF magnetic ballast
 ALCFQ13EB- 13W 120V/277 universal voltage electronic ballast

Labels: UL, CSA listed. Damp location.

Not approved for through wiring.

Options: TPS- Tamperproof screws

Dimensions: Housing: 7-13/16" W X 4-5/8" H X 2-15/16" D
 LFG: 10-1/8" W X 5-5/8" H X 11/32" D
 HLF6, HLF20, HLF10S: 9-5/8" W X 5-15/16" H X 1/4" D

Specification Example: ALCFQ13 277V-HLF6 Z

AL

FEATURES

Sturdy welded steel housing construction.

Die cast aluminum trim construction

Four finish options: Zet (metallic silver)[ALE only], black, bronze, or white (ALE only).

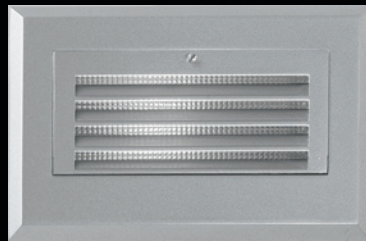
Damp location.

Electronic or HPF magnetic ballasts.

Louvered faceplate with prismatic glass lens.

Optional convenience outlets or toggle switch faceplate options.

AL RECESSED LITESTEP INCANDESCENT Non-IC



Housing/Lamp: AL- One 15W A-15 incandescent
ALE- One 25W A-19 incandescent

Trim Options: Die cast aluminum

LFG- Louvered faceplate with prismatic glass [AL only]

HLFG- Hinged louvered faceplate with prismatic glass [AL only]

HLF20- Hinged louvered faceplate with prismatic glass and two convenience outlets [AL only]

HLF10S- Hinged louvered faceplate with prismatic glass, one convenience outlet, and one toggle switch [AL only]

Finish: Zet (Z, metallic silver)[ALE only], Black (BL), Bronze (BZ), White (WH) [ALE only]

Housing Construction: Welded Steel

Labels: UL, CSA listed. Damp location.

Not approved for through wiring

Options: TPS- Tamperproof screws

Dimensions: Housing: 7-13/16" W X 4-5/8" H X 2-15/16" D
LFG: 10-1/8" W X 5-5/8" H X 11/32" D

HLFG, HLF20, HLF10S: 9-5/8" W X 5-15/16" H X 1/4" D

Specification Example: AL-HLF10S Z-TPS

9 3 S E R I E S
C F L , M H , & H P S

93

FEATURES

Die cast housing and faceplate construction
Specular clear Alzak reflectors.
Fully gasketed, listed for wet location and through wire applications.
Available with incandescent, CFL, or HID lamp options.
Three finish options: Zet (metallic silver), black, or bronze
Tamper resistant.
Electronic CFL or CWH high power factor HID ballasts.



93047CFT32EB (Triple Tube CFL)

RECESSED LITESTEP

Triple Tube Compact Fluorescent Non-IC

- Lamp:** One 26W, 32W, or 42W 4 pin triple tube CFL
- Ballast:** 120/277V multi-volt, multi-watt CFL
Class "P" electronic
- Trim/Reflector:** Heavy-duty die cast aluminum faceplate with integral cast louvers and sealed tempered clear glass. Specular Alzak reflector.
- Finish:** Zet (Z, metallic silver), Black (BL), or Bronze (BZ)
- Labels:** UL, CSA Listed. Wet location. Tamper resistant. Suitable for through wiring and concrete pour. Contact factory for salt spray and fusing applications.
- Dimensions:** Housing: 8-7/8" W X 13-11/16" H X 4"D
Trim: 9-3/4" W X 12" H X 13/32"D

Specification Example: 93047CFT32EB BZ

93047M3 (50W MH)
93047M5 (100W MH)
93047M7 (70W MH)

RECESSED LITESTEP
Metal Halide Non-IC

Housing/Lamp: 93047M3- One medium-base 50W ED17 MH lamp
93047M5- One medium-base 100W ED17 MH lamp
93047M7- One medium-base 70W ED17 MH lamp

Trim/Reflector: Heavy-duty die cast aluminum faceplate with integral cast louvers and sealed tempered clear glass. Specular Alzak reflector. 93047M5 supplied with an additional socket bracket for asymmetrical distribution.

Ballast: 120V, 277V, 347V (M5 & M7 only)
HX-HPF magnetic

Finish: Zet (Z, metallic silver), Black (BL), or Bronze (BZ)

Labels: UL, CSA Listed. Wet location and suitable for through wiring and concrete pour. Contact factory for salt spray applications.

Dimensions: Housing: 8-7/8" W X 15-1/2"H X 4-1/2"D
Trim: 9-3/4"W X 12"H X 13/32"D

Specification Example: 93047M5 277V BL

93047S3 (50W HPS)
93047S6 (70W HPS)

RECESSED LITESTEP
High Pressure Sodium Non-IC

Housing/Lamp: 93047S3- One 50W ED17 medium-base HPS lamp
93047S6- One 70W ED17 medium-base HPS lamp

Trim/Reflector: Heavy-duty die cast aluminum faceplate with integral cast louvers and sealed tempered clear glass. Specular Alzak reflector.

Ballast: 93047S3- 50W specify 120V or 277V HX-HPF magnetic ballast.
93047S6- 70W specify 120V, 208V, 240V, 347V (S6 only) HX-HPF magnetic ballast.

277V, or
Note: 93047S6 208V and 240V housings are concrete pour only.

Finish: Black (BL) or Bronze (BZ)

Labels: UL, CSA Listed. Wet location and suitable for through wiring and concrete pour. Contact factory for salt spray applications.

Dimensions: Housing: 8-7/8" W X 15-1/2"H X 4"D
Trim: 9-3/4"W X 12"H X 13/32"D

Specification Example: 9304S6 240V BL

93



93147CFT32EB (Triple Tube CFL)

RECESSED HIGH PERFORMANCE LITESTEP
Triple Tube Compact Fluorescent Non-IC

- Lamp:** One 26W, 32W, or 42W triple tube 4 pin CFL
Ballast: 120/277V multi-volt, multi-watt, Class "P" electronic
Trim/Reflector: Specular Alzak reflector, tempered clear glass faceplate with an optional blade louver.
Finish: Zet (Z, metallic silver), Black (BL), or Bronze (BZ)
Labels: UL, CSA Listed. Wet location and suitable for through wiring and concrete pour. Contact factory for salt spray applications.
Louver Options: 93LGB- black blade louver
93LGZ- bronze blade louver
93LGZT- Zet, metallic silver blade louver
Dimensions: Housing: 8-7/8" W X 13-11/16"H X 4"D
Trim: 9-3/4"W X 12"H X 13/32"D

Specification Example: 93147CFT32EB Z-93LGZT

93147M3 (50W MH)
93147M5 (100W MH, CONCRETE POUR ONLY)
93147M7 (70W MH)

RECESSED HIGH PERFORMANCE LITESTEP
METAL HALIDE Non-IC

Housing/Lamp: 93147M3- One 50W medium-base ED17 MH lamp
93147M5- One 100W medium-base ED17 MH lamp
93147M7- One 70W medium-base ED17 MH lamp

Ballast: 120V, 277V, or 347V (M7 only)
HX-HPF magnetic.

Reflector: Specular clear Alzak, tempered clear glass faceplate with an optional blade louver. Supplied with an additional socket bracket for asymmetrical distribution.

Finish: Zet (Z, metallic silver), Black (BL), or Bronze (BZ)

Louver Options: 93LGB- black blade louver
93LGZ- bronze blade louver
93LGZT- Zet, metallic silver blade louver

Labels: UL, CSA Listed. Wet location and suitable for through wiring and concrete pour. Contact factory for salt spray applications.

Dimensions: Housing: 8-7/8" W X 15-1/2"H X 4-1/2"D
Trim: 9-3/4"W X 12"H X 13/32"D

Specification Example: 93147M7 120V Z-93LGB

93147S3 (50W HPS)
93147S6 (70W HPS)

RECESSED HIGH PERFORMANCE LITESTEP
High Pressure Sodium Non-IC

Housing/Lamp: 93147S3- One 50W medium-base ED17 HPS lamp
93147S6- One 70W medium-base ED17 HPS lamp

Ballast: 120V, 277V, or 347V (S6 only)
HX-HPF magnetic.

Reflector: Specular clear Alzak, tempered clear glass faceplate with an optional blade louver. Supplied with an additional socket bracket for asymmetrical distribution.

Finish: Black (BL) or Bronze (BZ)

Labels: UL, CSA Listed. Wet location and suitable for through wiring and concrete pour. Contact factory for salt spray applications.

Louver Options: 93LGB- black blade louver
93LGZ- bronze blade louver
93LGZT- Zet, metallic silver blade louver

Dimensions: Housing: 8-7/8" W X 15-1/2"H X 4"D
Trim: 9-3/4"W X 12"H X 13/32"D

Specification Example: 93147S3 277V 93LGZ BZ



701 Millennium Boulevard
Greenville, SC 29607
Phone: (864) 678-1000
www.prescolite.com

Copyright © 2008 Prescolite, Inc., a division of Hubbell Lighting, Inc.
All rights reserved. Printed in USA.

PR1038a 06/08



Hubbell Lighting, Inc.