

EJBCR

Expanded Junction Box for CR Series Troffers

Product Description

The CR Series Expanded Junction Box doubles the size of the standard J-Box and allows for easier wiring when doing through wire or using heavier gauges of wire.

Product Specifications

CONSTRUCTION & MATERIALS

Galvanized steel 18 gauge

Dimensions: L 2.81" x W 1.60" x H 2.36"

REGULATORY & VOLUNTARY QUALIFICATIONS

UL Listed

Suitable for damp locations.

Ordering Information

Example: EJBCR-5PK

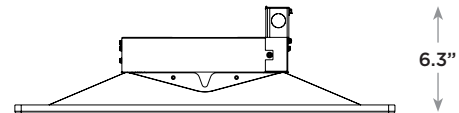
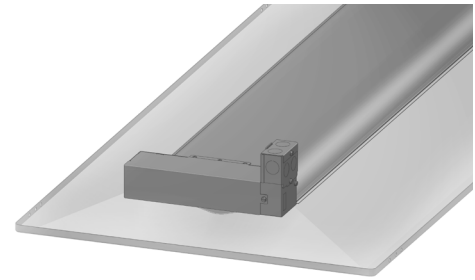
Product
EJBCR-5PK Sold in packs of 5

Installation

- Remove existing J-Box lid
- Install EJBCR over opening of existing J-Box
- Secure in place with enclosed screw
- Install existing J-Box lid on EJBCR

NOTE: Reference www.cree.com/lighting for detailed installation instructions.

EJBCR



NOTE: Use of Expanded Junction Box accessory will increase the depth of the troffer to 6.3"