



LED Lighting Catalog

Fall 2013



LR Series Downlights



Upgrade your space with industry-leading efficacy and exceptional light quality, built upon a proven LED lighting platform.

The LR6™ downlight delivers up to 1800 lumens of exceptional 90+ CRI light while achieving efficacy of 90 lumens per watt. This breakthrough performance is achieved by combining the high efficacy and high-quality light of Cree TrueWhite® Technology, allowing incandescent light to be replaced using 85% less energy. Available in a warm or neutral color temperature with a variety of snap-in reflector options, the LR6™ fixture is designed to easily retrofit into new or existing 6" housings, for commercial or residential use.

BENEFITS

- Up to 85 percent more efficient than incandescent
- Reduced maintenance cycles
- High color quality
- Fits in existing 6" housings

FEATURES

- Efficacy up to 90 LPW
- Utilizes Cree TrueWhite® Technology
- Active color management
- Standard 10-year limited warranty
- 50,000-hour rated life
- Standard 5% dimming

APPLICATIONS

- Airports, municipal, school & university, corporate campus, restaurant & hospitality, retail & grocery, government

LR6™

LR6-10L
LR6-18L

LE6™



LR Series Downlights

Ordering Information

Example: **LR6C-DR-1000-277V**

PRODUCT	COLOR TEMP.	SHIELD	LUMEN OUTPUT	VOLTAGE/BASE	OPTIONS
LR6 6"	Blank - 2700K C - 3500K	Blank - Standard Shield DR - 20° Shield	Blank 650 Lumens (use "650" with "DR" Shield option) 1000 - 1000 Lumens	Blank - Edison Base GU24 - GU24 Base 277V - 277 Volt - Three Pin Connector	Blank - Standard US - Made in USA

Example: **LR6-10L-35K-120V-A-DR**

PRODUCT	LUMEN OUTPUT	COLOR TEMP.	VOLTAGE/BASE	GENERATION	SHIELD
LR6 6"	10L - 1000 Lumens 18L - 1800 Lumens	27K - 2700K 30K - 3000K 35K - 3500K 40K - 4000K	120V 120 Volts - GU24 Base	A	DR - 20° Shield

Example: **LE6-C-500-GU24**

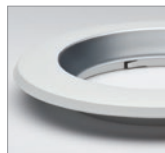
PRODUCT	COLOR TEMP.	LUMEN OUTPUT	VOLTAGE/BASE	OPTIONS
LE6 6"	Blank - 2700K C - 3500K	Blank - 500 Lumens (at 30° tilt)	Blank - Edison Base GU24 - GU24 Base	Blank - Standard US - Made in USA

*Ordering information is for reference only. Some product configurations are not available. Please consult spec sheets for specific product availability and for further details.

Accessory Information

SNAP-IN TRIMS

Snap-in Trim Kits are available in three standard color options.



LT6A
Diffuse Anodized
Finish Trim



LT6AW
Wheat Diffuse Anodized
Finish Trim



LT6AB
Black Anodized
Finish Trim

6" HOUSINGS

The LR6™ downlights fit into a variety of housings from Cree and other manufacturers.



H6 Series
Specification-Grade
Housing



RC6 Series
Commercial-Grade
Housing



RR6 Series
Retrofit Housing

6" MOUNTING KITS

The LR6™ downlights fit into a variety of mounting kits for ceiling, pendant or wall mounting.



SC6
Ceiling Mounts



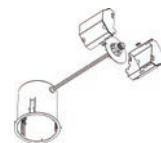
SC6-WM
Wall Mounts



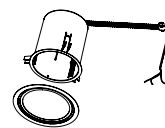
SC6-CM
Cord Mounts

6" COMMERCIAL RETROFIT KITS

A field-installable kit to transform the existing commercial-grade downlights into housings ready to accept the LR6™ downlights.



C6
Commercial 120V, Edison Base,
"Pan" Adaptor Kit

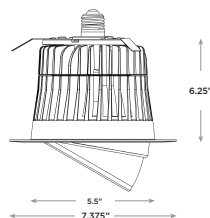
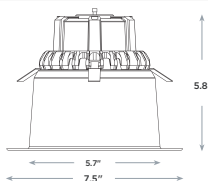
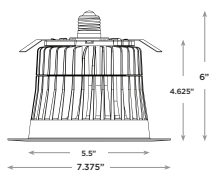


C6-LSA
Commercial 120V or 277V,
Hard-Wire, "Pan" Adaptor Kit

Dimensions

LR6™ DOWNLIGHTS

LE6™ DOWNLIGHT



You May Also Be Interested In:



CR-LE p.42
Light Engine Kits to Match the
CR Series Troffer



CS SERIES LINEAR p.58
Commercial Linear Solutions



CR SERIES TROFFERS p.40
High-Efficiency, Affordable Troffers