

DESCRIPTION

The compact die-cast aluminum Arrowhead™ floodlight blends well in almost any setting. It features an adjustable trunnion or slipfitter which allows exceptional mounting flexibility and light control. U.L. listed and labeled for wet locations. CSA certified.

The Arrowhead floodlight can be wall, ground or pole mounted, making it perfect for all commercial and industrial floodlighting applications.

Catalog #		Type
Project		
Comments		Date
Prepared by		

SPECIFICATION FEATURES

Construction

Heavy-duty cast aluminum housing and corrosion resistant captive retaining screws secure the weather-resistant integral hinged door. Tempered glass lens is heat and impact resistant. Four point door connections provide positive seal to housing. Housing is finished in weather and abrasion resistant dark bronze polyester powder coat.

Gasket

Full circumference high-temperature silicone gasket seals out external contaminants.

Socket/Lamp

Mogul or medium base porcelain socket included. 150W Medium base or up to 400W HP, MP for mogul base.

Reflector

Formed aluminum reflector optimizes beam efficiency and control.

Ballast

High power factor ballast with Class H insulation. Minimum starting temperature is -40° C (-40° F) for HPS and -30° C (-20° F) for MH and MP. HID ballasts are hard mounted to die cast aluminum back casting.

Mounting

Polyester powder coated steel trunnion or slipfitter mount provides stability and adjustable aiming. Slipfitter fits 2 3/8" O.D. tenon. Heavy-duty steel yoke provides flexibility in mounting and aiming from a variety of surfaces.



AH ARROWHEAD

150 - 400W

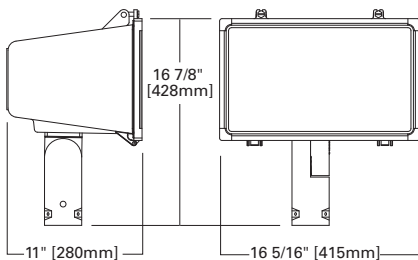
Pulse Start Metal Halide

High Pressure Sodium

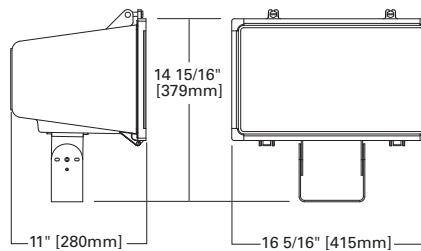
Metal Halide

FLOODLIGHT

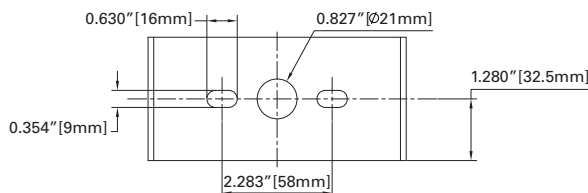
DIMENSIONS SLIPFITTER



DIMENSIONS TRUNNION



MOUNT DRILLING PATTERN - TRUNNION AND YOKE



TECHNICAL DATA

UL Wet Location Listed
cUL Listed
1.5G Vibration Rated
EISA @, ARRA, Title 20 Compliant

ENERGY DATA

CWA Ballast Input Watts
250W HPS HPF (300 Watts)
400W HPS HPF (465 Watts)
150W MP HPF (185 Watts)
250W MP HPF (283 Watts) @
320W MP HPF (365 Watts) @
400W MP HPF (452 Watts) @

EPA

Effective Projected Area:
1.59 @ 45°

SHIPPING DATA

Approximate Net Weight
30 lbs. (15 kgs.)

ORDERING INFORMATION

Sample Number: MPAH-S-32-277V



Lamp Type

MP=Pulse Start Metal Halide
MH=Metal Halide
HP=High Pressure Sodium

Series

AH=Arrowhead

Mounting

S=Slipfitter¹
T=Trunnion

Lamp Wattage

MP ²
15=150W
25=250W
32=320W
35=350W
40=400W
HP
15= 150W
25= 250W
40= 400W
MH ³
17= 175W
25= 250W
40= 400W

Voltage

120V=120V
208V=208V
240V=240V
277V=277V
347V= 347V
480V= 480V
MT: Multi-Tap, ⁴
wired 277V
TT: Triple-Tap, ⁵
wired 347V

Options

WH=White
LL=Lamp Included
PER=NEMA Twistlock Photocontrol Receptacle
PC: Button Type ⁶ Photocontrol

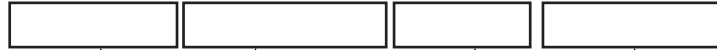
Accessories ⁷

AH/WG=Wire Guards⁸
AH/V-BZ=Side and top Visor - Bronze⁹
AH/V-WH=Side and top Visor - White⁹
AH/GS-BZ=Glass Replacement Door - Bronze
AH/GS-WH=Glass Replacement Door - White
QA/RA1014: Photoelectric Control, 120V NEMA Type
QA/RA1016: Photoelectric Control, 105-285V NEMA Type
QA/RA1013: Shorting Cap for NEMA Twistlock Photocontrol Receptacle
OA/RA1027: Photoelectric Control, 480V NEMA Type

- Notes: 1 Slipfitter fits 2 3/8" O.D. tenon.
 2 Medium base socket for Pulse Start Metal Halide 150W and Metal Halide 175W, all others mogul base.
 3 MH available in non-U.S. markets only.
 4 Supplied with 120/208/240/277-wired 277V.
 5 Supplied with tri-tap voltage 120/277/347 (wired 347V). 88% efficient EISA compliant fixtures not available in 347V or TT Voltages.
 6 Must specify voltage (120, 208, 240, or 277V).
 7 Order separately.
 8 Not available with AV/V-BZ or AV/V-WH.
 9 Not available with AH/WG.

STOCK SAMPLE

Sample Number: MPAH32S



Lamp Type

MP=Pulse Start Metal Halide
HP=High Pressure Sodium

Series

AH=Arrowhead

Lamp Wattage

15=150W
25=250W
32=320W
40=400W

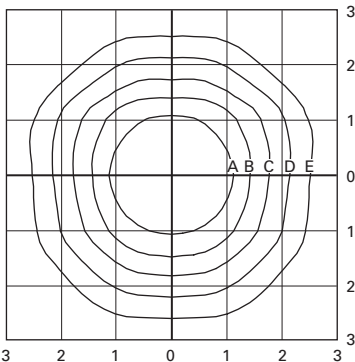
Mounting

S=Slipfitter
T=Trunnion

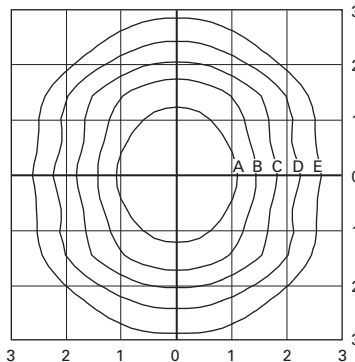
Stock Notes:
 Standard multi-tap and bronze. 150W and 320W available in MP only. Options not available with stock product. Refer to standard order information to add options. Refer to In-Stock Guide for availability. Lamps included.

LAMP TYPE	WATTAGE
Pulse Start Metal Halide (MP)	150, 250, 320, 350, 400W
Metal Halide (MH)	175, 250, 400W
High Pressure Sodium (HP)	150, 250, 400W

ARROWHEAD™ PHOTOMETRICS (Complete IES files available at www.cooperlighting.com)



MPAH-X-40
 400—Watt MP
 44,000—Lumen Clear Lamp



HPAH-X-40
 400—Watt HPS
 50,000—Lumen Clear Lamp

Footcandle Table

Select mounting height and read across for footcandle values of each isofootcandle line. Distance in units of mounting height.

Mounting Height	Footcandle Values for Isofootcandle Lines				
	A	B	C	D	E
MPAH-X-40 / HPAH-X-40					
20'	5.00	2.00	1.00	0.50	0.25
25'	3.20	1.28	0.64	0.32	0.16
30'	2.20	0.88	0.44	0.22	0.11