

DESCRIPTION

Low brightness 9-1/2-inch aperture downlight for use with two 26, 32, or 42W Triple Twin Tube 4-pin compact fluorescent lamps. The precisely formed non-imaging optical reflector ensures 55° cutoff to lamp and lamp image and the one piece design eliminates light leaks at the ceiling. Standard features include low iridescent finish on all reflector colors to eliminate "rainbowing" and electronic ballast(s), Venting ensures maximum lamp life and lumen output. Optics offer unparalleled performance in glare free lighting with a smooth beam. GRUVI open wall wash trim is also available for the same housing.

SPECIFICATION FEATURES

Reflector

Available in a variety of Alzak® finishes, in a .050 thick aluminum one piece spun parabolic contour. Positive reflector mounting, without tools, pulls trim tight to ceiling. Also available with White or Black Baffle.

Trim Ring Options

Self flanged or molded white trim ring.

Socket Connector

One piece die cast aluminum connection allows venting for maximum thermal performance.

Housing Mounting Frame

One piece precision die cast aluminum 1-1/2" deep collar accommodates varying dimensions of ceiling materials.

Universal Mounting Bracket

Accepts 1/2" EMT, C Channel, T bar fasteners, and bar hangers. Adjusts 5" vertically from above or below ceiling.

Conduit Fittings

Die cast screw tight connectors.

Junction Box

Listed for eight #12AWG (four in, four out) 90°C conductors feed through branch wiring. One 1/2" and two 3/4" pry outs. Positioned to allow straight conduit runs. Access to junction box by removing reflector.

Socket

4-pin Gx24q-3/4 base with fatigue free stainless steel lamp spring to ensure positive lamp retention.

Electronic Ballast

Electronic ballast(s) provides full light output and rated lamp life. Provides flicker free and noise free operation and starting. End of lamp life protection is standard.

Labels

cULus listed, standard damp label.



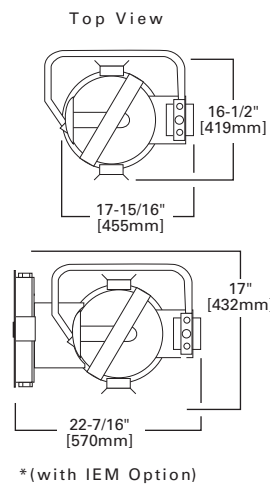
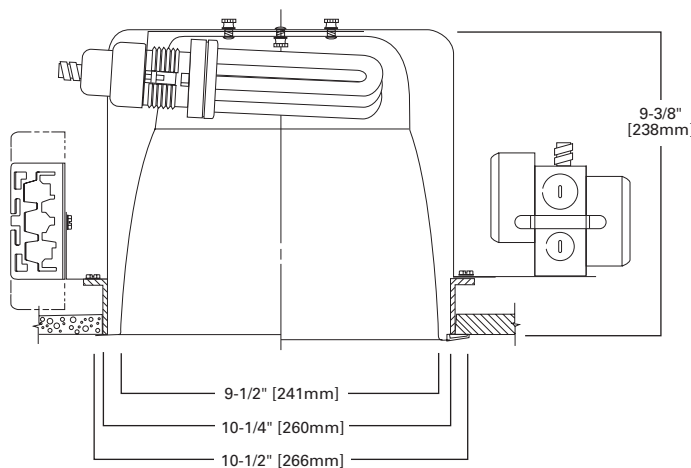
C9242 9251/50

(2) 26W, 32W, 42W

TTT or PLT

Compact Fluorescent

9-1/2-Inch Open Downlight



ENERGY DATA

(2) 26W TTT

Ballast: Electronic	
120V Input Watts: 55	Line Amps: 0.46
277V Input Watts: 55	Line Amps: 0.21
Power Factor: >0.98	THD: <10%
Min. Starting Temperature: -10°C (0°F)	
Sound Rating: Class A Standards	

(2) 32W TTT 4-pin

Ballast: Electronic	
120V Input Watts: 69	Line Amps: 0.57
277V Input Watts: 69	Line Amps: 0.25
Power Factor: >0.99	THD: <10%
Min. Starting Temperature: -10°C (0°F)	
Sound Rating: Class A Standards	

(2) 42W TTT 4-pin

Ballast: Electronic	
120V Input Watts: 93	Line Amps: 0.71
Inrush Current Amps: 5.0	
277V Input Watts: 93	Line Amps: 0.30
Inrush Current Amps: 9.0	
Power Factor: >0.99	THD: <10%
Min. Starting Temperature: -10°F (0°C)	
Sound Rating: Class A Standards	

NOTES: Accessories should be ordered separately. For additional options, please consult your Cooper Lighting Representative. Alzak is a registered trademark of Aluminum Company of America.

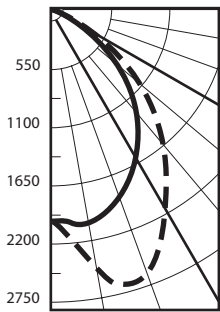
ORDERING INFORMATION

EXAMPLE: C9242E 9250G

Housing	Lamps	Wattage	Ballast	Options	Trims	Finish	Option	Accessories
C9=9" Horizontal Lamp	2=2 Lamps	42=26W, 32W, 42W TTT or PLT Lamp	E=120/277V 50/60 Hz Electronic 3E=347V 50/60 Hz Electronic D5LT26=26W 120-277V Fifth Light (DALI Dimming) D5LT32=32W 120-277V Fifth Light (DALI Dimming) D5LT42=42W 120-277V Fifth Light (DALI Dimming) 3D5LT26/32=26 or 32W 347V Fifth Light (DALI Dimming) 3D5LT42=42W 347V Fifth Light (DALI Dimming) D26/32=26 or 32W 120-277V Lutron EcoSystem Dimming D42=42W 120-277V Lutron EcoSystem Dimming EDR26=DeRated Wattage Label, 26W EDR32=DeRated Wattage Label, 32W	CP=Chicago Plenum EM=Emergency Module with remote test switch IEM=Emergency Module with integral test switch 2C=(2) ballasts for Hi-Low Switching 2CMS=2 Circuit Master Satellite (2 housings, order 2 trims)	9251=WD Beam Self Flanged Reflector 9250=Molded Trim Ring 9251E=elf Flanged, use with IEM 9250E=Molded Trim Ring, use with IEM	LI=Low Iridescent Clear H=Haze WMH=Warm Haze G=Gold WH=Wheat W=Gloss White GP=Graphite GPH=Graphite Haze BB=Black Baffle (9250 only) WB=White Baffle (9250 only)	WF=White Painted Flanged (Self Flanged only)	HB26=C Channel Bar Hangers, 26" Long, Pair HB50=C Channel Bar Hangers, 50" Long, Pair FK5=5 Amp Field Installable Fuse Kit 300V Max RMB-22=Wood Joist Bar Hanger, 22" Long, Pair HSA9=Slope Adapter for 9" Aperture Housings, Specify Slope

PHOTOMETRICS

Candlepower Distribution



Test No. H40019
C9242-9250LI
Open Reflector
Lamp=(2) 42W PLT
Lumens=3200 each

Spacing Criteria=
0°=1.2 90°=1.4
Efficiency=68.1%

— 0°
- - - 90°

Candlepower

Deg.	CD	90°
0	2040	2040
5	2045	2170
15	1928	2627
25	1824	2450
35	1450	1922
45	1121	1382
55	492	556
65	19	18
75	7	6
85	2	1
90	0	0

Average Luminance

Deg.	CD/SQ M	90°
45	3465.4	42723
55	1875.0	21189
65	983	931
75	591	507
85	502	251

Cone of Light

Distance to Illuminated Plane	Initial Nadir Footcandles	Beam Diameter
5'6"	67	8'0"
6'6"	48	9'6"
8'0"	32	11'6"
10'0"	20	14'6"
12'0"	14	17'0"
14'0"	10	20'0"

Beam diameter is to 50% of maximum footcandles, rounded to the nearest half-foot.

Footcandle values are initial, apply appropriate light loss factors where necessary.

Lamp Multiplier: 32W=.75 26W=.56	Reflector Multiplier: Haze=.96 Straw=.99 Wheat=.95	EM Multiplier (In emergency mode) =.12
--	---	--

Zonal Lumen Summary

Zone	Lumen s	%Lam p	%Luminaire
0-30	1874	29.3	43.0
0-40	2948	46.1	67.6
0-60	4330	67.7	99.3
0-90	4359	68.1	100.0
90-180	0	0.0	0.0
0-180	4359	68.1	100.0

Coefficient of Utilization

rc	80%				70%			50%		30%		10%		0%
	70	50	30	10	50	30	10	50	10	50	10	50	10	0
RCR														
0	81	81	81	81	79	79	79	76	76	72	72	70	70	68
1	77	75	73	71	73	72	70	71	68	68	66	66	64	63
2	73	69	66	64	68	65	63	66	61	64	60	62	59	58
3	68	64	60	57	63	59	56	61	55	59	55	58	54	53
4	64	59	54	51	58	54	51	56	50	55	50	54	49	48
5	60	54	49	46	53	49	46	52	46	51	45	50	45	44
6	56	49	45	42	49	45	41	48	41	47	41	46	40	39
7	52	45	40	37	45	40	37	44	37	43	36	42	36	35
8	49	41	36	33	41	36	33	40	33	39	33	39	33	32
9	45	38	33	30	37	33	30	36	29	36	29	35	29	28
10	42	34	30	27	34	30	26	33	26	33	26	33	26	25

rc=Ceiling reflectance, rw=Wall reflectance, RCR=Room cavity ratio
CU Data Based on 20% Effective Floor Cavity Reflectance.