

**DESCRIPTION**

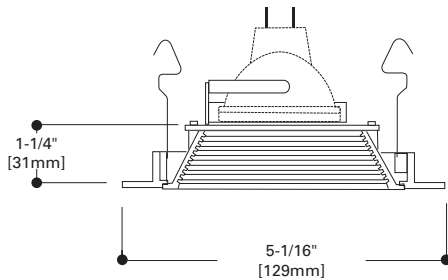
Baffle trim for 12V low voltage 4" H1499 family recessed housings. Die cast trim ring with Coilex® baffle. Reflector and trim ring available in a variety of finishes. Three "cat's paw" springs secure trim in housing.

**DESIGN FEATURES**

Cast aluminum trim ring available in Matte White, Silver, Polished Brass, Black Chrome, Satin Nickel, Antique Copper or Tuscan Bronze finishes. Baffle available in Black or White. Three pressure springs ensure positive retention in housing.

1493 is designed for use with the following small aperture housings;

- Low Voltage Housing
  - H1499T 50W 12V MR16
  - H1499RT 50W 12V MR16
  - H1499ICT 50W 12V MR16
  - H1499T75 75W 12V MR16



<b>Catalog #</b>		<b>Type</b>
<b>Project</b>		
<b>Comments</b>		<b>Date</b>
<b>Prepared by</b>		



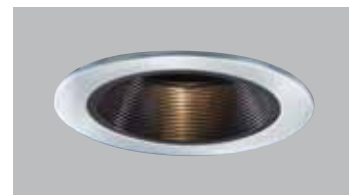
**1493P**  
Black Baffle with  
White Trim Ring



**1493W**  
White Baffle with  
White Trim Ring



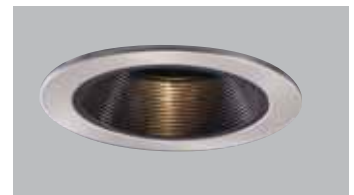
**1493PB**  
Black Baffle with  
Polished Brass Trim Ring



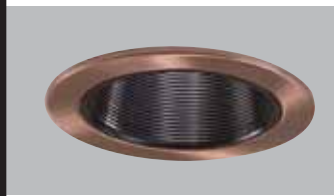
**1493SL**  
Black Baffle with Silver Trim Ring



**1493BC**  
Black Baffle with  
Black Chrome Trim Ring



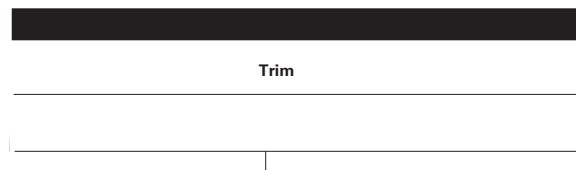
**1493SN**  
Black Baffle with  
Satin Nickel Trim Ring



**1493AC**  
Black Baffle with  
Antique Copper Trim Ring



**1493TBZ**  
Black Baffle with  
Tuscan Bronze Trim Ring



- 1493P**= Black Baffle, White Trim Ring
- 1493W**= White Baffle, White Trim Ring
- 1493PB**= Black baffle, Polished Brass Trim Ring
- 1493SL**= Black Baffle, Silver Trim Ring
- 1493BC**= Black Baffle, Black Chrome Trim Ring
- 1493SN**= Black Baffle, Satin Nickel Trim Ring
- 1493AC**= Black Baffle, Antique Copper Trim Ring
- 1493TBZ**= Black Baffle, Tuscan Bronze Trim Ring

**1493**  
Reflector Trim

**4" TRIMS**

Note: Specifications and Dimensions subject to change without notice.  
Visit our web site at [www.cooperlighting.com](http://www.cooperlighting.com)