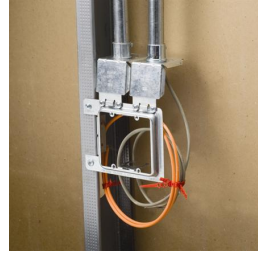
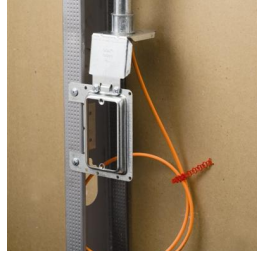
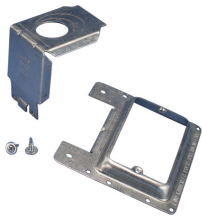


Box Eliminator Conduit Support with Mounting Plate – MP1SCB



- Eliminates need for electrical box when datacomm cables are run in conduit
- Mounting plate kits include mounting plate, conduit support and screws



Part Number	MP1SCB
Material	Steel
Finish	Pregalvanized
Gang	1
EMT Conduit Size	3/4" 1" 1 1/4"
Drywall Thickness	1/2" - 5/8"
Certifications	cULus
Standard Packaging Quantity	25 pc
UPC	78285667076

UL, UR, cUL, cUR, cULus and cURus are registered certification marks of UL LLC.

WARNING

Pentair products shall be installed and used only as indicated in Pentair's product instruction sheets and training materials. Instruction sheets are available at erico.pentair.com and from your Pentair customer service representative. Improper installation, misuse, misapplication or other failure to completely follow Pentair's instructions and warnings may cause product malfunction, property damage, serious bodily injury and death and/or void your warranty.

© 2017 Pentair All rights reserved

Pentair, CADDY, CADWELD, CRITEC, ERICO, ERIFLEX, ERITECH and LENTON are owned by Pentair or its global affiliates.

All other trademarks are the property of their respective owners. Pentair reserves the right to change specifications without prior notice.

