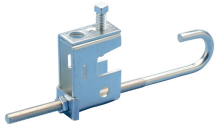
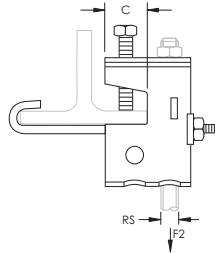
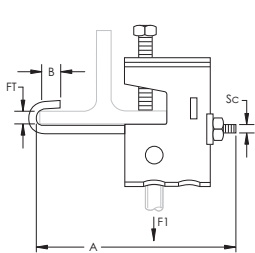


# BC11/BC12 Multi-Function Clamp with J-Bolt – BC110000EG



- Structural attachment to beams to support threaded rod
- J-bolt provides additional stability in high vibration environments



Part Number	BC110000EG
Material	Steel
Finish	Electrogalvanized
Rod Size (RS)	3/8" 1/2"
Flange Thickness (FT)	3/4" Max
Screw Diameter (Sc)	3/8"
A	8 1/2"
B	1"
C	1"
Static Load 1 (F1)	500 lb
Static Load 2 (F2)	300 lb
Standard Packaging Quantity	25 pc
UPC	78285634007

Setscrew must be tightened and torqued onto the sloped side of the I-beam.

## WARNING

Pentair products shall be installed and used only as indicated in Pentair's product instruction sheets and training materials. Instruction sheets are available at [erico.pentair.com](http://erico.pentair.com) and from your Pentair customer service representative. Improper installation, misuse, misapplication or other failure to completely follow Pentair's instructions and warnings may cause product malfunction, property damage, serious bodily injury and death and/or void your warranty.

© 2017 Pentair All rights reserved  
 Pentair, CADDY, CADWELD, CRITEC, ERICO, ERIFLEX, ERITECH and LENTON are owned by Pentair or its global affiliates.  
 All other trademarks are the property of their respective owners. Pentair reserves the right to change specifications without prior notice.

