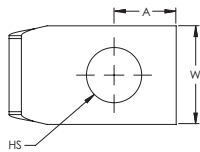
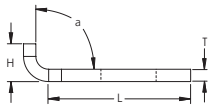


1 Hole Lug, GL Style – B121DE



- Provides an efficient bolting surface for grounding and power applications
- Electrolytic grade copper
- For use with ERICO CADWELD type GL connections only



Part Number	B121DE
Material	Copper
Finish	Tinned
Type	NEMA®
Height (H)	0.44"
Length (L)	1.47"
Width (W)	1"
Thickness (T)	0.188"
A	0.625"
Hole Size (HS)	0.563"
Angle (a)	105°
Equivalent Conductor Size	239 kcmil
Standard Packaging Quantity	10 pc
UPC	78285632180
EAN-13	8711893093827

For sizes not listed, contact us.

NEMA is a registered service mark of National Electrical Manufacturers Association.

WARNING

Pentair products shall be installed and used only as indicated in Pentair's product instruction sheets and training materials. Instruction sheets are available at erico.pentair.com and from your Pentair customer service representative. Improper installation, misuse, misapplication or other failure to completely follow Pentair's instructions and warnings may cause product malfunction, property damage, serious bodily injury and death and/or void your warranty.

© 2017 Pentair All rights reserved

Pentair, CADDY, CADWELD, CRITEC, ERICO, ERIFLEX, ERITECH and LENTON are owned by Pentair or its global affiliates.

All other trademarks are the property of their respective owners. Pentair reserves the right to change specifications without prior notice.