

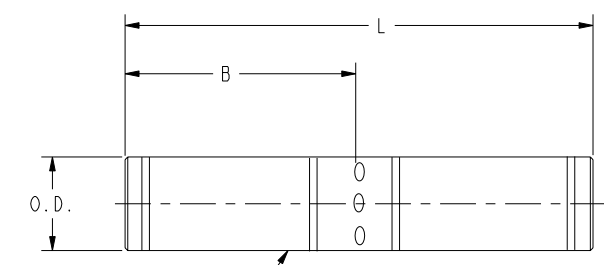
DRAWING NO.  
SD022390

CATALOG NUMBER	FIG. NO.	COPPER CONDUCTOR		B	L ±.04	O.D. ±.01	COLOR CODE	WIRE STRIP LENGTH	NO. OF SPACES PER END
		NAVY	COM'L CABLE						
YS8CL	1	23 (.171)	AN-8 STR. (.167) 6 SOL. (.162)	.44 [11]	1.00 [25]	.27 [7]	RED	.50 [13]	1
YS6CL	1	-----	6 STR. (.183)	.81 [21]	1.75 [44]	.29 [7]	BLUE	.88 [22]	1
YS5CL	1	30 (.202)	5 STR. (.206)	.81 [21]	1.90 [48]	.30 [8]	BLUE	.88 [22]	1
YS4CL	1	40 (.226)	4 STR. (.231)	.81 [21]	1.75 [44]	.34 [9]	GRAY	.88 [22]	1
YS3CL	1	50 (.254)	3 STR. (.261) 2 SOL. (.257)	.88 [22]	2.05 [52]	.38 [10]	WHITE	.94 [24]	1
YS2CL	1	60 (.282)	2 STR. (.291)	.88 [22]	2.00 [51]	.42 [11]	BROWN	.94 [24]	1
YS1CL	1	75 (.317)	1 STR. (.330)	.88 [22]	2.06 [52]	.46 [12]	GREEN	.94 [24]	1
YS25L	1	100 (.363)	1/0 STR. (.373)	.88 [22]	2.08 [53]	.51 [13]	PINK	.94 [24]	1
YS26L	1	125 (.407)	2/0 STR. (.418)	.94 [24]	2.17 [55]	.56 [14]	BLACK	1.00 [25]	1
YS27L	1	150 (.457)	3/0 STR. (.470)	1.00 [25]	2.30 [58]	.62 [16]	ORANGE	1.06 [27]	1
YS28L	1	200 (.514)	4/0 STR. (.528)	1.00 [25]	2.32 [59]	.69 [18]	PURPLE	1.06 [27]	1
YS29L	1	250 (.577)	250 kcmil (.575)	1.06 [27]	2.46 [62]	.75 [19]	YELLOW	1.12 [28]	1
YS30L	2	300 (.628)	300 kcmil (.630)	1.06 [27]	2.47 [63]	.81 [21]	WHITE	1.12 [28]	2
YS31L	2	350 (.681)	350 kcmil (.681)	1.12 [28]	2.60 [66]	.88 [22]	RED	1.18 [30]	2
YS32L	2	400 (.742)	400 kcmil (.728)	1.19 [30]	2.74 [70]	.95 [24]	BLUE	1.25 [32]	2
YS33L	2	-----	450 kcmil (.772)	1.19 [30]	2.76 [70]	1.01 [26]	GRAY	1.25 [32]	2
YS34L	2	-----	500 kcmil (.814)	1.38 [35]	3.15 [80]	1.06 [27]	BROWN	1.44 [37]	2
YS35L	2	500 (.832)	550 kcmil (.855)	1.38 [35]	3.20 [81]	1.12 [28]	YELLOW	1.44 [37]	2
YS36L	2	-----	600 kcmil (.893)	1.38 [35]	3.22 [82]	1.18 [30]	GREEN	1.44 [37]	2
YS37L	2	650 (.936)	650 kcmil (.929)	1.38 [35]	3.23 [82]	1.23 [31]	ORANGE	1.44 [37]	1
YS38L	2	-----	700 kcmil (.964)	1.38 [35]	3.22 [82]	1.25 [32]	PINK	1.44 [37]	1
YS39L	2	-----	750 kcmil (.998)	1.62 [41]	3.72 [94]	1.30 [33]	BLACK	1.69 [43]	2
YS40L	2	-----	800 kcmil (1.031)	1.62 [41]	3.75 [95]	1.35 [34]	ORANGE	1.69 [43]	1
YS41L	2	800 (1.051)	850 kcmil (1.062)	1.62 [41]	3.76 [96]	1.38 [35]	GOLD	1.69 [43]	1
YS44L	2	-----	1000 kcmil (1.152)	1.88 [48]	4.28 [109]	1.49 [38]	WHITE	1.94 [49]	1
YS45L	2	-----	1250 kcmil (1.289)	2.00 [51]	4.60 [117]	1.69 [43]	YELLOW	2.06 [52]	2
YS453L	2	1300 (1.325)	1300 kcmil (1.315)	2.00 [51]	4.60 [117]	1.74 [44]	ORANGE	2.06 [52]	2
YS46L	2	-----	1500 kcmil (1.412)	2.00 [51]	4.40 [112]	1.84 [47]	GREEN	2.06 [52]	2
YS47L	2	-----	1750 kcmil (1.527)	2.19 [56]	5.00 [127]	1.98 [50]	GRAY	2.25 [57]	2
YS48L	2	-----	2000 kcmil (1.631)	2.25 [57]	5.17 [131]	2.12 [54]	BROWN	2.31 [59]	2

NOTES:

1. FOR SILVER PLATING ON HYLINKS™ ADD SUFFIX LETTERS "LV" TO THE CATALOG NUMBER.
2. MATERIAL: COPPER TUBE.
3. FINISH: TIN PLATED.
4. ON ALL DIES LISTED, ONE ACTUATION OF THE PRESS IS EQUAL TO ONE CRIMP.
5. KNURLS OR STRIPES INDICATE THE LOCATION OF CRIMPS USED FOR THE MOST COMMON DIE SET.
6. CRIMPS ARE PLACED BETWEEN THE KNURLS OR STRIPES.
7. FOR USE BY CUSTOMER THAT HAVE THIS HYPRESS™ NO NEW Y34 HYPRESSES™ ARE BEING PRODUCED.
8. SERIES 91 - 101 DIES REPRESENT THE OLD DIE INDEX SYSTEM AND ARE INTERCHANGABLE WITH THE NEW 7 - 14 DIE INDEX SYSTEM.
9. 'U' AND 'L' DIE SETS ARE COLOR CODED. 'A', 'C' AND 'F' DIE SETS ARE NOT COLOR CODED. NESTS AND INDENTORS ARE NOT COLOR CODED.
10. ALL TOOL AND DIE OPTIONS ARE NOT SHOWN. SEE MASTER CATALOG FOR MORE OPTIONS.
11. USE PT6515 ADAPTER WITH U-DIES IN Y45 TOOL.
12. USE PUADP-1 ADAPTER WITH U-DIES IN Y46 TOOL.
13. OVERLAPPING CRIMPS ARE REQUIRED ON THESE SIZES.
14. DIMENSIONS IN BRACKETS [ ] ARE IN MILLIMETERS, ROUNDED OFF TO THE NEAREST MILLIMETER, UNLESS OTHERWISE NOTED. METRIC DIMENSIONS ARE FOR REFERENCE ONLY.
15. SHEET 6 IS FOR INTERNAL USE ONLY.

REV	DATE	DESCRIPTION	ECO	BY	C'H'K.
K	09/24/2012 09:00:00 AM	COMBINING SHEETS 1 TO 5 IN TABLE	28601	DD	MB



CRIMP BETWEEN COLOR CODED STRIPES.

COLOR CODED INK MARKING (TYPICAL LETTERING)

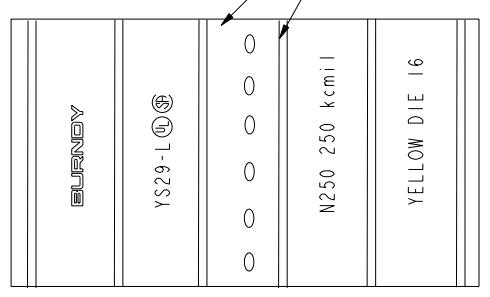
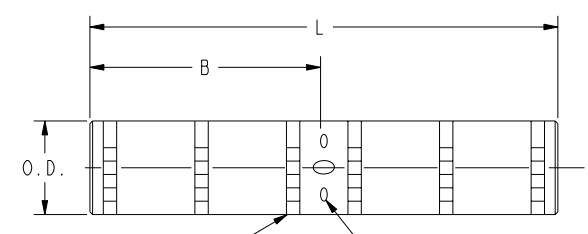


FIG. 1



CRIMP BETWEEN KNURLS

CABLE STOPS

KNURLS

COLOR CODED INK DOT (TYPICAL LETTERING)

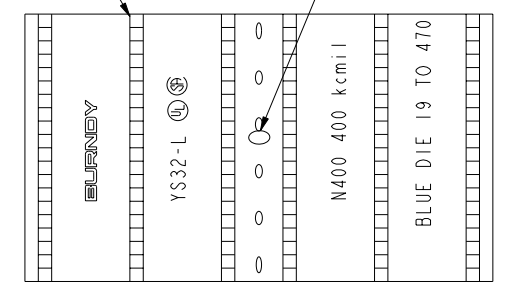


FIG. 2

TO ORDER BURNDY® PRODUCTS CALL		HYLINK™	
UNITED STATES 1-800-346-4175 (LONDONDERRY, NH)		ITEM NO: N/A	CAT. NO: YS-L (TABLE)
CANADA: 1-800-361-6975 (QUEBEC) 1-800-387-6487 (ALL OTHER PROVINCES)		DRAWN BY: C.RACCANO 10/11/76	CHECKER: C.A.R 10/12/76
FOR PRODUCT INFO: <a href="http://www.burndy.com">http://www.burndy.com</a>		DSN APPVL: --	MFG APPVL: --
		QA APPVL: --	MKT APPVL: --
		PROJ #: --	SIZE: D
		DOCUMENT TYPE: Sales	REL LEVEL: Released
		PROJ FAM: CM&R COMPRESSION	DRAWING NO: SD022390
		SCALE: 1:1	REV: K
		SHEET 1 OF 6	

REV: PE0200

DRAWING NO.  
SD022390

REV	DATE	DESCRIPTION	ECO	BY	C'H'K.
K	09/24/2012 09:00:00 AM	COMBINING SHEETS 1 TO 5 IN TABLE	28601	DD	MB

CONDUCTOR	CATALOG NUMBER	HAND TOOL HYTOOL - (NO. OF CRIMPS)	8 DIE INDEX	HYDRAULIC TOOLS AND NO. OF CRIMPS PER END										DIELESS TOOL AND NO. OF CRIMPS PER END	
				DIE TYPE	DIE COLOR	Y34A	Y35, Y39 Y750, PAT750	MD6, OUR840 PAT600	Y45	Y46	Y48B	Y486RB	Y60B		
AN-8 STR. (.167)	YS8CL	Y8MRB-1, Y1MRTC MY29-11, MY29-3 MRC840	49	CIRCULAR DIE SET	RED	-----	U8CRT 1 CRIMP	W8CRT(1) X8CRT(1)	U8CRT 1 CRIMP	U8CRT 1 CRIMP	-----	-----	-----	-----	-----
6 STR. (.183)	YS6CL	Y1MRTC(1) MY29-11(1) MY29-3(1) MRC840(1)	374	HEXAGONAL DIE SET	BLUE	-----	U8CABT 1 CRIMP	-----	U8CABT 1 CRIMP	U8CABT 1 CRIMP	-----	-----	-----	Y644(1) PAT644 Y81KFT Y4PC834	
			7	CIRCULAR DIE SET	BLUE	A5CR 1 CRIMP	U5CRT 1 CRIMP	W5CRT(1) X5CRT(1)	U5CRT 1 CRIMP	U5CRT 1 CRIMP	-----	-----	-----		
			94	NEST INDENTOR	----	A6CD Y34PR 1 CRIMP	U6CD-1 Y34PR 1 CRIMP	-----	-----	-----	-----	-----	-----		-----
5 STR. (.206)	YS5CL		7	CIRCULAR DIE SET	BLUE	A5CR 1 CRIMP	U5CRT 1 CRIMP	W5CRT(1) X5CRT(1)	U5CRT 1 CRIMP	U5CRT 1 CRIMP	-----	-----	-----		
			94	NEST INDENTOR	----	A6CD Y34PR 1 CRIMP	U6CD-1 Y34PR 1 CRIMP	-----	-----	-----	-----	-----	-----	-----	
4 STR. (.231)	YS4CL	Y1MRTC(2) MY29-11(1) MY29-3(1) MRC840(1)	346	HEXAGONAL DIE SET	GRAY	A6CAB 1 CRIMP	U6CABT 1 CRIMP	-----	U6CABT 1 CRIMP	U6CABT 1 CRIMP	-----	-----	-----	Y644(1) PAT644(1) Y81KFT(1) PAT81KFT(1) Y4PC834(1) PAT4PC834(1)	
			8	CIRCULAR DIE SET	GRAY	A4CR 1 CRIMP	U4CRT 1 CRIMP	W4CRT(1) X4CRT(1)	U4CRT 1 CRIMP	U4CRT 1 CRIMP	-----	-----	-----		
			95	NEST INDENTOR	----	A4CD Y34PR 1 CRIMP	U4CD-1 Y34PR 1 CRIMP	-----	-----	-----	-----	-----	-----		-----
3 STR. (.261)	YS3CL		9	-----	WHITE	A3CR 1 CRIMP	U3CRT 1 CRIMP	W3CRT(1)	U3CRT 1 CRIMP	U3CRT 1 CRIMP	-----	-----	-----		
			96	NEST INDENTOR	----	A3CD Y34PR 1 CRIMP	U3CD-1 Y34PR 1 CRIMP	-----	-----	-----	-----	-----	-----	-----	
2 STR. (.291)	YS2CL		10	CIRCULAR DIE SET	BROWN	A2CR 1 CRIMP	U2CRT 1 CRIMP	W2CRT(1) X2CRT(1)	U2CRT 1 CRIMP	U2CRT 1 CRIMP	-----	-----	-----		
			97	NEST INDENTOR	----	A2CD Y34PR 1 CRIMP	U2CD-1 Y34PR 1 CRIMP	-----	-----	-----	-----	-----	-----	-----	
1 STR. (.330)	YS1CL		375	HEXAGONAL DIE SET	GREEN	A4CAB 1 CRIMP	U4CABT 1 CRIMP	-----	U4CABT 1 CRIMP	U4CABT 1 CRIMP	-----	-----	-----		
			11	CIRCULAR DIE SET	GREEN	A1CR 1 CRIMP	U1CRT 1 CRIMP	W1CRT-1(1) X1CRT-1(1)	U1CRT 1 CRIMP	U1CRT 1 CRIMP	-----	-----	-----	-----	
			98	NEST INDENTOR	----	A1CD Y34PR 1 CRIMP	U1CD-1 Y34PR 1 CRIMP	-----	-----	-----	-----	-----	-----		
			348	HEXAGONAL DIE SET	PINK	A2CAB 1 CRIMP	U2CABT 1 CRIMP	-----	U2CABT 1 CRIMP	U2CABT 1 CRIMP	-----	-----	-----	-----	
1/0 STR. (.373)	YS25L	MY29-11(1) MY29-3(1) MRC840(2)	12	CIRCULAR DIE SET	PINK	A25R 1 CRIMP	U25RT 1 CRIMP	W25RT(2) X25RT(2)	U25RT 1 CRIMP	U25RT 1 CRIMP	-----	-----	-----		
			99	NEST INDENTOR	----	A25D Y34PR 1 CRIMP	U25D-1 Y34PR 1 CRIMP	-----	-----	-----	-----	-----	-----	-----	
2/0 STR. (.418)	YS26L		13	CIRCULAR DIE SET	BLACK	A26R 1 CRIMP	U26RT 1 CRIMP	W26RT(2) X26RT(2)	U26RT 1 CRIMP	U26RT 1 CRIMP	-----	-----	-----		
			100	NEST INDENTOR	----	A26D Y34PR 1 CRIMP	U26D-1 Y34PR 1 CRIMP	-----	-----	-----	-----	-----	-----	-----	
3/0 STR. (.470)	YS27L		14	CIRCULAR DIE SET	ORANGE	A27R 1 CRIMP	U27RT 1 CRIMP	W27RT(2) X27RT(3)	U27RT 1 CRIMP	U27RT 1 CRIMP	-----	-----	-----		
			101	NEST INDENTOR	----	A27D Y34PR 1 CRIMP	U27D-1 Y34PR 1 CRIMP	-----	-----	-----	-----	-----	-----	-----	
4/0 STR. (.528)	YS28L		15	CIRCULAR DIE SET	PURPLE	A28R 1 CRIMP	U28RT 1 CRIMP	W28RT(2) X28RT(3)	U28RT 1 CRIMP	U28RT 1 CRIMP	C28R 1 CRIMP	-----	L28RT 1 CRIMP		
				NEST INDENTOR	----	A28D Y34PR 1 CRIMP	-----	-----	-----	-----	-----	-----	-----	-----	

TO ORDER BURNDY® PRODUCTS CALL		HYLINK™ TOOLING	
UNITED STATES 1-800-346-4175 (LONDONDERRY, NH)		ITEM NO: N/A	CAT. NO: YS-L (TABLE)
CANADA: 1-800-361-6975 (QUEBEC) 1-800-387-6487 (ALL OTHER PROVINCES)		DRAWN BY: --	CHECKER: --
FOR PRODUCT INFO: <a href="http://www.burndy.com">http://www.burndy.com</a>		DSN APPVL: --	MFG APPVL: --
		QA APPVL: --	MKT APPVL: --
		PROD FAM: CM&R COMPRESSION	DRAWING NO: SD022390
		PROJECT #: --	SCALE: NTS
		DOCUMENT TYPE: Sales	REV: K
		REL LEVEL: Released	SHEET 2 OF 6

REV: PEO200

D  
C  
B  
A

D  
C  
B  
A

8 7 6 5 4 3 2 1

DRAWING NO.  
SD022390

CONDUCTOR	CATALOG NUMBER	HAND TOOL HYTOOL-(NO. OF CRIMPS)	DIE INDEX	HYDRAULIC TOOLS AND NO. OF CRIMPS PER END										DIELESS TOOL AND NO. OF CRIMPS PER END				
				DIE TYPE	DIE COLOR	Y34A	Y35, Y39 Y750, PAT750	MD6, OUR840 PAT600	Y45	Y46	Y48B	Y486RB	Y60B					
250 kcmil (.575)	YS29L	MY29-3 1 CRIMP	16	CIRCULAR DIE SET	YELLOW	A29R 1 CRIMP	U29RT 1 CRIMP	W29RT(2) X29RT(4)	U29RT 1 CRIMP	U29RT 1 CRIMP	C29R 1 CRIMP	-----	L29RT 1 CRIMP	Y644, Y644M Y644MBH, Y1000 Y1000BH				
				NEST INDENTOR	-----	A29D Y34PR 1 CRIMP	-----	-----	-----	-----	-----	-----	-----		-----			
300 kcmil (.630)	YS30L	-----	298	CIRCULAR DIE SET	WHITE	A28R 2 CRIMPS	U28ART 2 CRIMPS	-----	U28ART 2 CRIMPS	U28ART 2 CRIMPS	C28AR 2 CRIMPS	F28AR 2 CRIMPS	L28ART		Y644(1) PAT644(1) Y81KFT(2) PAT81KFT(2) Y4PC834(2) PAT4PC834(2)			
				NEST INDENTOR	-----	-----	-----	-----	-----	-----	-----	-----	-----			-----	-----	
350 kcmil (.681)	YS31L	-----	324	CIRCULAR DIE SET	RED	A29AR 2 CRIMPS	U29ART 2 CRIMPS	U29ART 2 CRIMPS	U29ART 2 CRIMPS	U29ART 2 CRIMPS	-----	-----	L29ART			Y644(1) PAT644(1) Y81KFT(2) PAT81KFT(2) Y4PC834(2) PAT4PC834(2)		
				NEST INDENTOR	-----	-----	-----	-----	-----	-----	-----	-----	-----				-----	-----
400 kcmil (.728)	YS32L	-----	470	CIRCULAR DIE SET	BLUE	A30AR 2 CRIMPS	U30ART 2 CRIMPS	U30ART 2 CRIMPS	U30ART 2 CRIMPS	U30ART 2 CRIMPS	-----	-----	L30ART				Y644(1) PAT644(1) Y81KFT(2) PAT81KFT(2) Y4PC834(2) PAT4PC834(2)	
				NEST INDENTOR	-----	-----	-----	-----	-----	-----	-----	-----	-----					-----
450 kcmil (.772)	YS33L	-----	326	CIRCULAR DIE SET	GRAY	-----	U33RT 2 CRIMPS	W33RT(2) W33VT(2)	U33RT 2 CRIMPS	U33RT 2 CRIMPS	-----	-----	-----					Y644(1) PAT644(1) Y81KFT(2) PAT81KFT(2) Y4PC834(2) PAT4PC834(2)
				NEST INDENTOR	-----	A33D Y34PR 1 CRIMP	-----	-----	-----	-----	-----	-----	C33D Y48PR 1 CRIMP					
500 kcmil (.814)	YS34L	-----	299	CIRCULAR DIE SET	BROWN	-----	U31ART 1 CRIMP	-----	U31ART 1 CRIMP	U31ART 1 CRIMP	-----	-----	L31ART	Y644(1) PAT644(1) Y81KFT(2) PAT81KFT(2) Y4PC834(2) PAT4PC834(2)				
				NEST INDENTOR	-----	-----	-----	-----	-----	-----	-----	-----	-----					
500 kcmil (.814)	YS34L	-----	20	CIRCULAR DIE SET	BROWN	A34R 2 CRIMPS	U34RT 2 CRIMPS	W34RT(2) W34VT(2)	U34RT 2 CRIMPS	U34RT 2 CRIMPS	-----	-----	L34RT		Y644(1) PAT644(1) Y81KFT(2) PAT81KFT(2) Y4PC834(2) PAT4PC834(2)			
				NEST INDENTOR	-----	A34D Y34PR 1 CRIMP	-----	-----	-----	-----	-----	-----	C34D Y48PR 1 CRIMP					

REV	DATE	DESCRIPTION	ECO	BY	C'H'K.
K	09/24/2012 09:00:00 AM	COMBINING SHEETS 1 TO 3 IN TABLE	28601	DD	MB

Y644(1)  
PAT644(1)  
Y81KFT(2)  
PAT81KFT(2)  
Y4PC834(2)  
PAT4PC834(2)

REV: PE0200

TO ORDER BURNDY® PRODUCTS CALL  
UNITED STATES  
1-800-346-4175 (LONDONDERRY, NH)  
CANADA:  
1-800-361-6975 (QUEBEC)  
1-800-387-6487 (ALL OTHER PROVINCES)  
FOR PRODUCT INFO: <http://www.burndy.com>

HYLINK™ TOOLING			
ITEM NO:	N/A		
CAT. NO:	YS-L (TABLE)		
DRAWN BY:	C.RACCANO	6/13/77	
CHECKER:	C.A.R	6/13/77	
DSN APPVL:	--	--	
MFG APPVL:	--	--	
QA APPVL:	L.B.	6/24/77	
MKT APPVL:	--	--	
PROD FAM:	CM&R COMPRESSION	DRAWING NO	REV
PROJECT #:	SIZE	SD022390	K
DOCUMENT TYPE:	Sales	SHEET 3 OF 6	
REL LEVEL:	Released		



DRAWING NO.  
SD022390

7

6

5

4

3

2

1

HYDRAULIC TOOLS AND NO. OF CRIMPS PER END

DIELESS TOOL AND NO. OF CRIMPS PER END

CONDUCTOR	CATALOG NUMBER	HAND TOOL	DIE INDEX	HYDRAULIC TOOLS AND NO. OF CRIMPS PER END										DIELESS TOOL AND NO. OF CRIMPS PER END		
		HYTOOL - (NO. OF CRIMPS)		DIE TYPE	DIE COLOR	Y34A	Y35, Y39 Y750, PAT750	MD6 OUR840 PAT600	Y45	Y46	Y48B	Y486RB	Y60B			
550kcmil (.855)	YS35L	-----	21	CIRCULAR DIE SET	YELLOW	-----	-----	-----	U35RT 2 CRIMPS	-----	U35RT 2 CRIMPS	-----	-----	L35RT 1 CRIMP	Y644(1) PAT644(1) Y81KFT(2) PAT81KFT(2) Y4PC834(2) PAT4PC834(2)	
				NEST INDENTOR	-----	-----	-----	-----	-----	-----	-----	C35D Y48PR 1 CRIMP	F35D Y48PR 1 CRIMP	-----		
600kcmil (.898)	YS36L	-----	472	CIRCULAR DIE SET	GREEN	-----	-----	-----	U32ART 2 CRIMPS	-----	U32ART 2 CRIMPS	-----	C32AR 2 CRIMPS	F32AR 2 CRIMPS		L32ART 1 CRIMP
				NEST INDENTOR	-----	-----	-----	-----	-----	-----	-----	C35D Y48PR-1 1 CRIMP	F35D Y48PR-1 1 CRIMP	-----		
650kcmil (.929)	YS37L	-----	23	CIRCULAR DIE SET	GREEN	-----	-----	-----	U36RT 2 CRIMPS	-----	U36RT 2 CRIMPS	-----	C36R 1 CRIMP	F36R 1 CRIMP		L36RT 1 CRIMP
				NEST INDENTOR	-----	-----	-----	-----	-----	-----	-----	C36D Y48PR 1 CRIMP	F36D Y48PR 1 CRIMP	-----		
700kcmil (.964)	YS38L	-----	400	CIRCULAR DIE SET	ORANGE	-----	-----	-----	-----	-----	-----	-----	-----	-----		-----
				NEST INDENTOR	-----	-----	-----	-----	-----	-----	-----	-----	C38D Y48PR 1 CRIMP	F38D Y48PR 1 CRIMP		-----
750kcmil (.998)	YS39L	-----	24	CIRCULAR DIE SET	PINK	-----	-----	-----	-----	-----	-----	-----	C39R 1 CRIMP	F39R 1 CRIMP		L39RT 1 CRIMP
				NEST INDENTOR	-----	-----	-----	-----	-----	-----	-----	-----	C39D Y48PR 1 CRIMP	F39D Y48PR 1 CRIMP		-----
800kcmil (1.031)	YS40L	-----	25	CIRCULAR DIE SET	BLACK	-----	-----	-----	-----	U39RT 2 CRIMPS	U39RT 2 CRIMPS	P39RT U39RT 2 CRIMPS	C39R 1 CRIMP	F39R 1 CRIMP	L39RT 1 CRIMP	
				NEST INDENTOR	-----	-----	-----	-----	-----	-----	-----	-----	-----	-----	C39D Y48PR 1 CRIMP	F39D Y48PR 1 CRIMP
850kcmil (1.062)	YS41L	-----	26	CIRCULAR DIE SET	ORANGE	-----	-----	-----	-----	-----	S40RT 2 CRIMPS	P40RT 2 CRIMPS	C40R 1 CRIMP	-----	L40RT 1 CRIMP	
				NEST INDENTOR	-----	-----	-----	-----	-----	-----	-----	-----	-----	-----	C40D Y48PR 1 CRIMP	F40D Y48PR 1 CRIMP
1000kcmil (1.152)	YS44L	-----	27	CIRCULAR DIE SET	GOLD	-----	-----	-----	-----	-----	-----	-----	-----	-----	-----	
				NEST INDENTOR	-----	-----	-----	-----	-----	-----	-----	-----	-----	-----	-----	-----
1250kcmil (1.289)	YS45L	-----	29	CIRCULAR DIE SET	WHITE	-----	-----	-----	-----	-----	S44RT 2 CRIMPS	P44RT 2 CRIMPS	C44R 1 CRIMP	F44R 1 CRIMP	L44RT 1 CRIMP	
				NEST INDENTOR	-----	-----	-----	-----	-----	-----	-----	-----	-----	-----	-----	-----
1300kcmil (1.315)	YS453L	-----	30	CIRCULAR DIE SET	YELLOW	-----	-----	-----	-----	-----	S45RT 6 CRIMPS	P45RT	-----	-----	L45RT 2 CRIMPS	
				NEST INDENTOR	-----	-----	-----	-----	-----	-----	-----	-----	-----	-----	-----	-----
1300kcmil (1.315)	YS453L	-----	30	CIRCULAR DIE SET	YELLOW	-----	-----	-----	-----	-----	-----	-----	-----	-----	-----	
				NEST INDENTOR	-----	-----	-----	-----	-----	-----	-----	-----	-----	-----	-----	-----

Y644(1)  
PAT644(1)  
Y81KFT(3)  
PAT81KFT(3)  
Y4PC834(3)  
PAT4PC834(3)

Y644(1)  
PAT644(1)  
Y81KFT(3)  
PAT81KFT(3)  
Y4PC834(3)  
PAT4PC834(3)

REV: PEO200

TO ORDER BURNDY® PRODUCTS CALL  
UNITED STATES  
1-800-346-4175 (LONDONDERRY, NH)  
CANADA:  
1-800-361-6975 (QUEBEC)  
1-800-387-6487 (ALL OTHER PROVINCES)  
FOR PRODUCT INFO: <http://www.burndy.com>

HYLINK™ TOOLING

ITEM NO:	N/A
CAT. NO:	YS-L (TABLE)
DRAWN BY:	C. RACCANO 6/13/77
CHECKER:	C. A. R 6/13/77
DSN APPVL:	L. B. 6/24/77
MFG APPVL:	--
QA APPVL:	--
MKT APPVL:	--

**BURNDY**

PROD FAM:	CM&R COMPRESSION	DRAWING NO	REV
PROJECT #:	--	SD022390	K
DOCUMENT TYPE:	Sales	SHEET 4 OF 6	
REL LEVEL:	Released		

REV	DATE	DESCRIPTION	ECO	BY	C'H'K.
K	09/24/2012 09:00:00 AM	CONTINING SHEETS 1 TO 5 IN TABLE	28601	DD	MB

8

7

6

5

4

3

2

1

DRAWING NO.  
SD022390

7

6

5

4

3


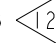
2

1

REV	DATE	DESCRIPTION	ECO	BY	C'H'K.
K	09/24/2012 09:00:00 AM	COMBINING SHEETS 1 TO 5 IN TABLE	28601	DD	MB

D

D

CONDUCTOR	CATALOG NUMBER	HAND TOOL HYTOOL - (NO. OF CRIMPS)	DIE INDEX	HYDRAULIC TOOLS AND NUMBER OF CRIMPS PER END									
				DIE TYPE	DIE COLOR	Y34A	Y35, Y39 Y750, PAT750	MD6 OUR840 PAT600	Y45 	Y46 	Y48B	Y486RB	Y60B
1500 kcmil (1.412)	YS46L	-----	31	CIRCULAR DIE SET	GREEN	-----	-----	-----	S46RT 3 CRIMPS	P46RT 3 CRIMPS	C46R 2 CRIMPS	F46R 2 CRIMPS	L46RT 2 CRIMPS
				NEST INDENTOR	-----	-----	-----	-----	-----	C46D Y48PR 1 CRIMP	F46D Y48PR 1 CRIMP	-----	-----
1750 kcmil (1.527)	YS47L	-----	33	CIRCULAR DIE SET	GRAY	-----	-----	-----	-----	-----	C47R 2 CRIMPS	-----	L47RT 2 CRIMPS
				NEST INDENTOR	-----	-----	-----	-----	-----	C47D Y48PR 2 CRIMPS	F47D Y48PR 2 CRIMPS	-----	-----
2000 kcmil (1.631)	YS48L	-----	34	CIRCULAR DIE SET	BROWN	-----	-----	-----	-----	-----	-----	F48R 2 CRIMPS	L48RT 2 CRIMPS
				NEST INDENTOR	-----	-----	-----	-----	-----	C48D Y48PR 1 CRIMP	F48D Y48PR 1 CRIMP	-----	-----

C

C

B

B

A

A

REV: PE0200

8

7

6

5

4

3

2

1

<p>TO ORDER BURNDY® PRODUCTS CALL          UNITED STATES          1-800-346-4175 (LONDONDERRY, NH)          CANADA:          1-800-361-6975 (QUEBEC)          1-800-387-6487 (ALL OTHER PROVINCES)          FOR PRODUCT INFO: <a href="http://www.burndy.com">http://www.burndy.com</a></p>		<p>HYLINK™ TOOLING</p> <p>ITEM NO: N/A          CAT. NO: YS-L (TABLE)          DRAWN BY: C. RACCANO 6/13/77          CHECKER: C. A. R. 6/13/77          DSN APPVL: L. B. 6/24/77          MFG APPVL: --          QA APPVL: --          MKT APPVL: --</p> <p><b>BURNDY</b></p>	
<p>PROD FAM: CM&amp;R COMPRESSION          PROJECT #: --          DOCUMENT TYPE: Sales          REL LEVEL: Released</p>		<p>SCALE: NTS</p> <p>DRAWING NO: SD022390          REV: K          SHEET 5 OF 6</p>	