



BradyGlo™ Photoluminescent Identification Product

**Long distance, glow-in-the-dark
identification for emergency egress**

BradyGlo™ Photoluminescent Identification Products

When emergency situations occur, it's essential that employees and visitors in the workplace are able to move out of a dark building quickly and safely. BradyGlo photoluminescent markings illuminate evacuation routes, guiding people around obstacles, along stairs, through hallways and to the nearest exit.

These quality and reliable glow-in-the-dark products feature:

- High-tack adhesive that's up to 30% stronger than other pressure-sensitive adhesives, meaning you reduce costs spent on replacing with new labels
- Pre-cut products save time and ensure correct and consistent configuration
- Low-profile construction allows products to easily conform to handrails, stand pipes and other unique shapes for fast application
- Department of Buildings Materials and Equipment Acceptance (MEA) division approved
- Made in the US for NYC Local Law 26 compliance

Reliable & Quality Products

We understand the needs of our customers and the applications they use them on – and we understand the need for quality, worker safety, durability and easy installation. That's why Brady's photoluminescent products are developed, manufactured and tested in our own facilities by our R&D team. Brady has extensive experience in developing, engineering and manufacturing safety signs, labels and markings.





BradyGlo High Visibility Signage

Clear, concise direction at point of need



BradyGlo High Intensity Tape

Line walls, stairwells and handrails and more



BradyGlo Exit Signs

Can be attached on a surface, ceiling or flag mounted



BradyGlo Dots, Arrows & Floor Markings

Place on floors, walls and stairs



BradyGlo High Intensity Hazard Tape

Mark steps, edge of landings, perimeter demarcation lines, door frame markings, handrails and more



BradyGlo Stair Corner Tape

Durable, weather-resistant for high traffic areas



BradyGlo Handrail Tape

Easily install onto existing handrails



BradyGlo Door Hardware Markers

Mark final exit doors or on the door handle



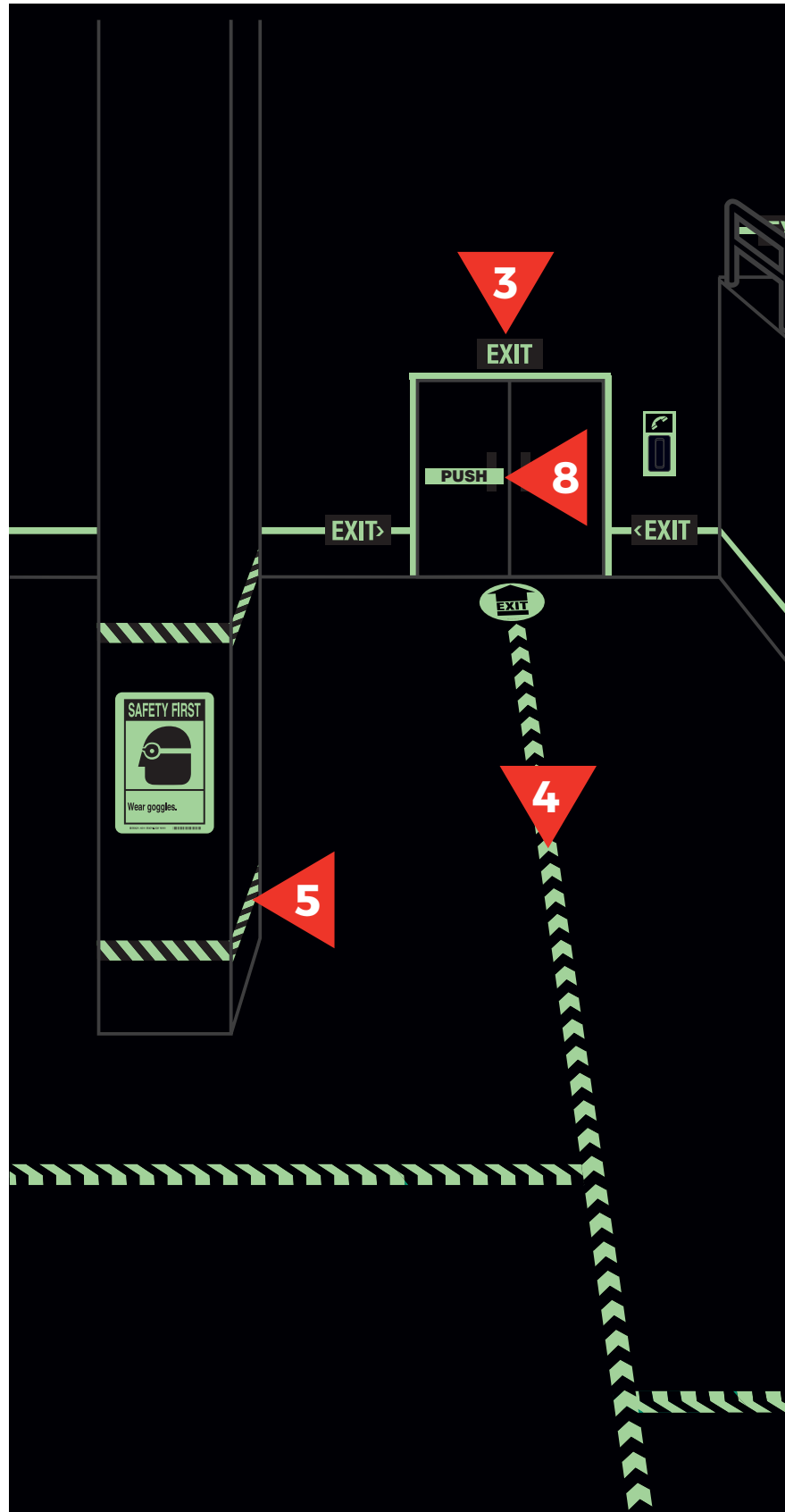
BradyGlo High Intensity Anti Skid Tape

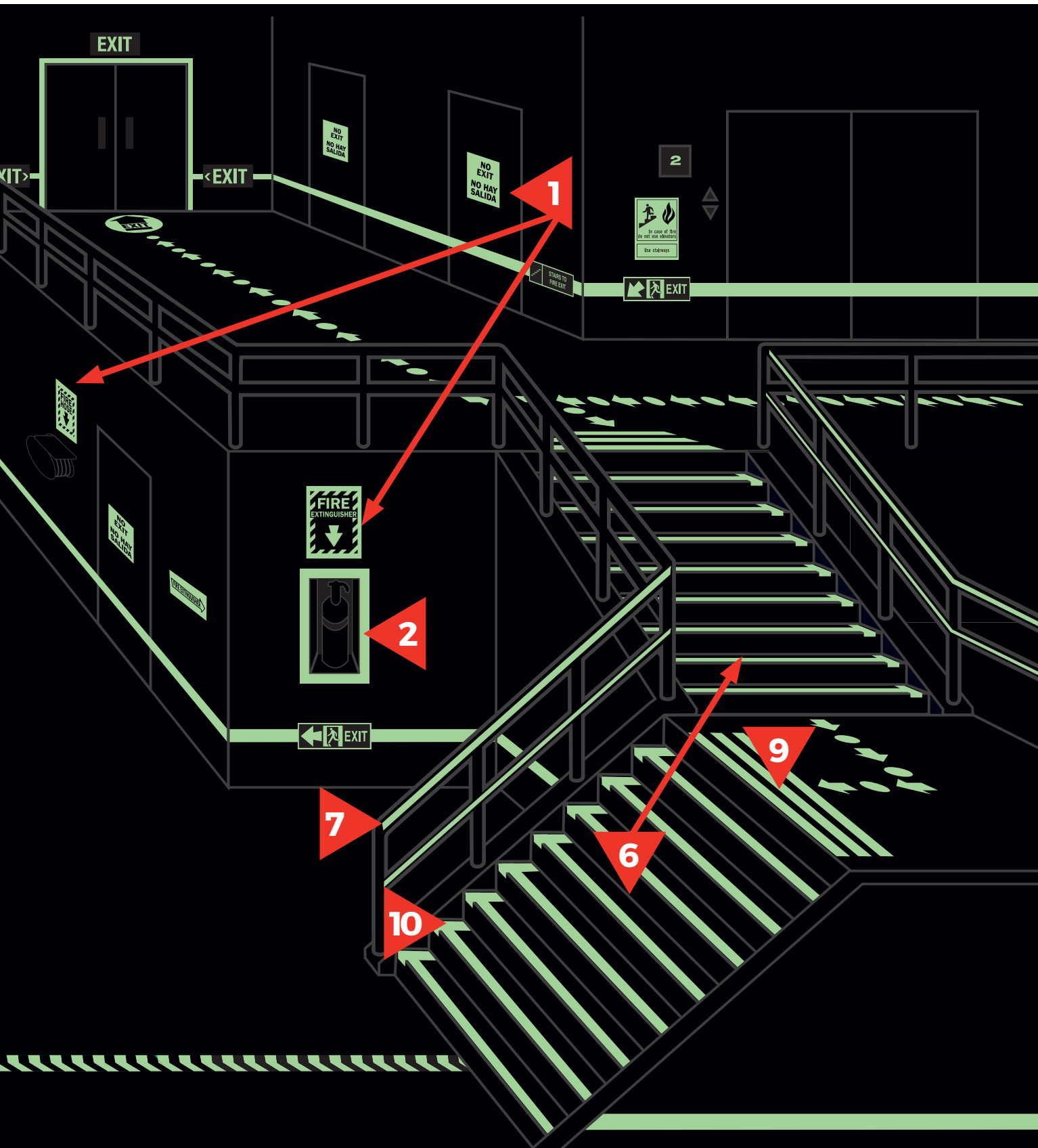
Mark stairs steps and creates guidance lines on floors



BradyGlo L-Shaped Stair Markers

Use as side edge markings on both horizontal sides of each step





Industry Regulations At-A-Glance

The following codes and regulations contain provisions for the means of egress and photoluminescent markings on stairs, handrails, signage and more.

LOCAL

New York City Local Law 26

Requires all Class E commercial properties that are 75 feet or taller to use photoluminescent markings on:

- Door opening to exits and exit passageways
- Landings, perimeters and individual stair steps located within exit passageways
- Obstacles and hazards located within exit passageways
- Directional guidance signs to vertical, horizontal and final exits, plus "Not an Exit" door signs where applicable
- Handrails on building with plans approved after July 1, 2006

NATIONAL

UL1994 Standard for Luminous Egress Path Marking Systems

This standard regulates specific materials and testing for photoluminescent egress products for doors, door hardware, door frames, stairs, landings, banisters, obstacles, egress symbols, information placards and more.

NFPA

CH. 7 Means of Egress

Compliance requirements for means of egress in both new and existing buildings.

- 7.2.2.5.5.10 Materials. Exit stair path markings shall be made of any material, including paint, provided that an electrical charge is not required to maintain the required luminescence. Such materials shall include, but shall not be limited to, self-luminous materials and photoluminescent materials.
- 7.2.2.5.5.11 Exit Stair Illumination. Requires that exit enclosures where photoluminescent materials are installed to be continuously illuminated for at least 60 minutes prior to periods when the building is occupied.

101 Life Safety Code

Strategies to minimize the effects of fire and related hazards in both new and existing structures with requirements for egress, features of fire protection, sprinkler systems, alarms, emergency lighting, smoke barriers and special hazard protection.

INTERNATIONAL

IBC (International Building Code)

Requires that all non-residential groups A, B, E, I and R-1 for new construction over 75 feet in height must install photoluminescent Exit Path markings in all enclosed emergency exit stairwells (Code 403.16 and 1024)

IFC (International Fire Code)

Requires that all non-residential buildings groups A, B, E, I, M and R-1 for existing construction over 75 feet in height must install photoluminescent Exit Path markings in all enclosed emergency exit stairwells (IFC Section 4604)

The Photoluminescent Safety Association's Most Frequently Cited Standards

1. UL 924–Standard for Safety of Emergency Lighting and Power Equipment
2. UL 1994–Standard for Luminous Egress Path Marking Systems
3. ASTM E2072-10–Standard Specification for Photoluminescent Safety Markings
4. ASTM E2073-10–Standard Test Method for Photopic Luminance of Photoluminescent Markings
5. ASTM E2030-09a–Standard Guide for Recommended Uses of Photoluminescent Safety Markings
6. New York City Reference Standard RS 6-1–Photoluminescent Exit Path Markings
7. APTA SS-PS-004-99, Rev. 2–Standard for Low-Location Exit Path Marking, published October 2007
8. APTA SS-PS-002-98, Rev. 3–Standard for Emergency Signage for Egress/Access of Passenger Rail Equipment
9. ISO 15370–Low-Location Lighting on Passenger Ships
10. ISO 16069–Graphical Symbols, Safety Signs, Safety Way Guidance Systems
11. DIN 67510 German Industrial Standard in 4 Parts–Terms and measurement for the evaluation of longtime after-glowing pigments and products
12. JIS Z 9100–Japanese Industrial Standard for Safety Signs



Y4317410 MS4317410

USA
Customer Service: 1-888-272-3946
Inside Sales: 1-888-311-0775
BradyID.com

Canada
Customer Service: 1-800-263-6179
BradyCanada.ca

Mexico
1-800-262-7777
Inside Sales: 1-800-262-7777 ext 177
BradyLatinAmerica.com