

Multiple Horizontal Metering

100 Amp Self-Contained Ganged Socket/225 Amp Main Bus With By-Pass



142MCC

APPLICATION

- For horizontal multi-meter installations
- 2 - 4 meter positions
- Designed to receive watt-hour meters that meet ANSI C12.10
- Overhead or underground feed

CONSTRUCTION

- Type 3R construction
- 225amp main bus
- AW hub provision
- Snap type sealing ring included
- 5th jaw provision at nine o'clock
- Ring style
- Manual circuit closing bypass under separate sealable cover

STANDARDS

- UL 414 listed, complies with ANSI C12.7

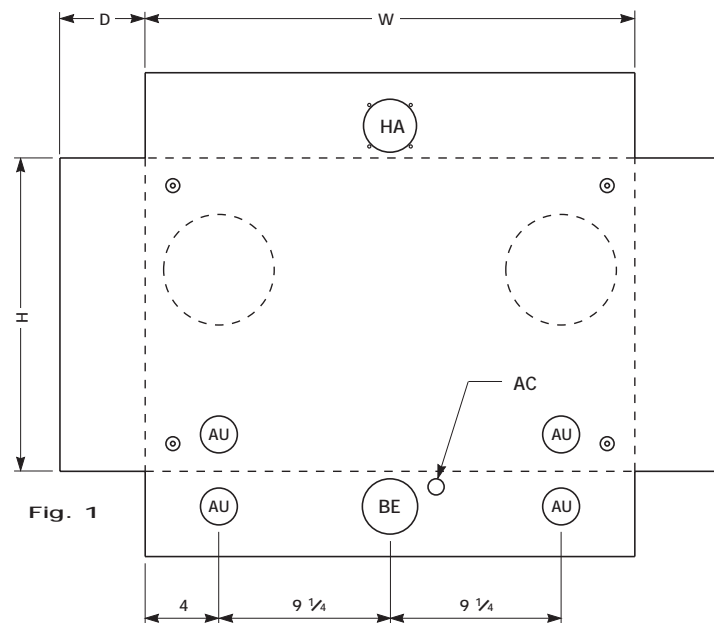
ACCESSORIES

- Screw type sealing ring — catalog #25016D
- Steel or clear lexan covers for socket opening
- AW hubs
- 5th jaw kit — catalog #50365

Overhead/Underground-Surface Mount

CATALOG NUMBER	No. OF POS.	AIC RATING	MAIN BUS AMPACITY	SOCKET MAX.	AMPACITY CONT.	VOLTAGE	SERVICE TYPE	NUMBER OF JAWS	BYPASS TYPE	HUB PROV.	CONDUCTOR LUG RANGE		DIMENSIONS (INCHES)			
											PHASE & NEUTRAL LINE	CONDUCTORS LOAD	FIGURE NUMBER	HEIGHT (H)	WIDTH (W)	DEPTH (D)
142MCC	2	†	225	--	100	600	1Ø 3W	4	MCC	AW	6 AWG - 250 kcmil	14 AWG - 2/0 AWG	Fig. 1	17	26 1/2	4 5/8
143MCC	3	†	225	--	100	600	1Ø 3W	4	MCC	AW	6 AWG - 250 kcmil	14 AWG - 2/0 AWG	Fig. 2	17	34 3/4	4 5/8
144MCC	4	†	225	--	100	600	1Ø 3W	4	MCC	AW	6 AWG - 250 kcmil	14 AWG - 2/0 AWG	Fig. 3	17	43	4 5/8

† = Meter sockets on this page have certain short circuit current ratings when used in conformance with the tables on page 140.



Knockouts — Conduit Sizes

AC = 1/2" - 1/4"
 AU = 1 1/2" - 1 1/4" - 1" - 3/4"
 BE = 2 1/2" - 2" - 1 1/2" - 1 1/4"
 HA = AW HUB

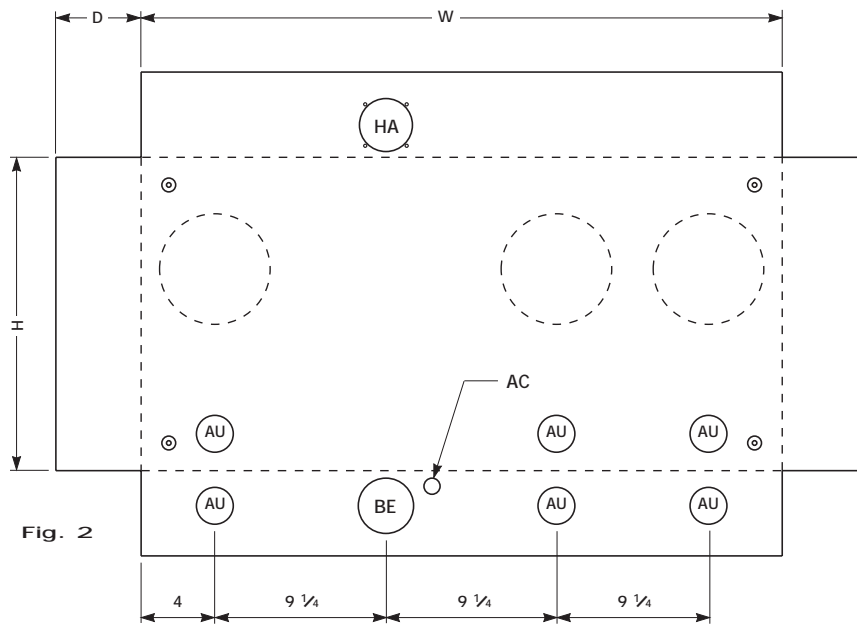


Fig. 2

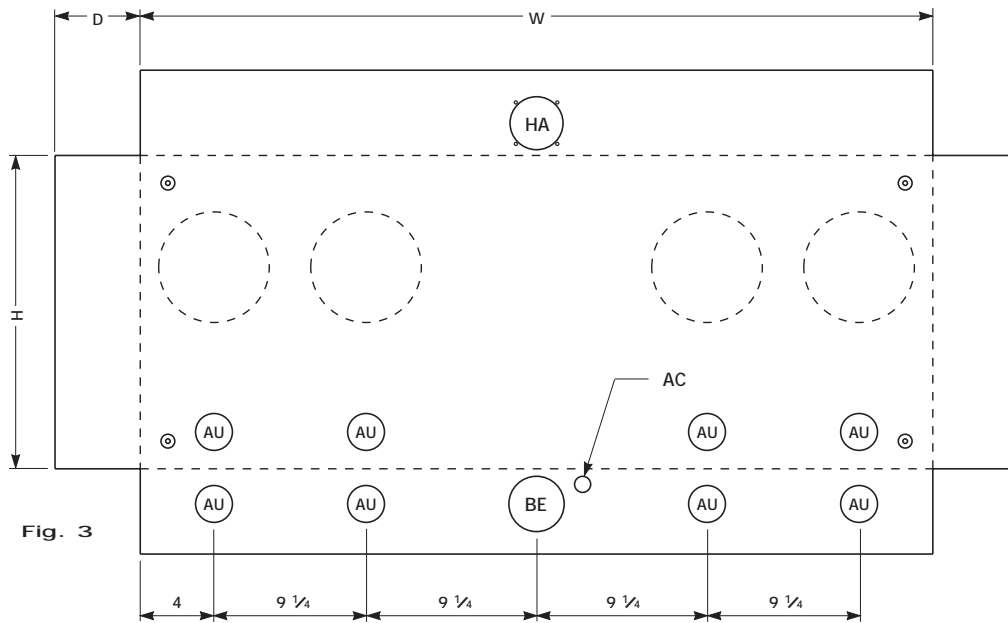


Fig. 3

Knockouts — Conduit Sizes

- AC = 1/2" - 1/4"
- AU = 1 1/2" - 1 1/4" - 1" - 3/4"
- BE = 2 1/2" - 2" - 1 1/2" - 1 1/4"
- HA = AW HUB