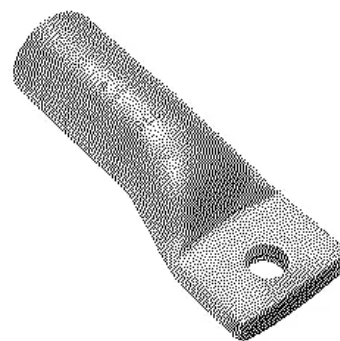


YA39A1, Al Compression, 1-Hole, 1/2" Stud, AL9CU, 750 kcmil

By Burndy
Catalog # YA39A1



AL Terminal, AL9CU, Internal Chamfer, Tin Plated, Prefilled PENETROX™ A13, End Cap, UL/CSA, 90°C, Up to 35kV, Color Code, Die Index.

Features

- UL486A-486B Listed and CSA Certified
- Aluminum terminals are dual rated to accommodate both copper and aluminum wire and are indicated with AL-CU on the connector - AL9CU is UL Listed 90°C, up to 35kV, AL7CU is UL Listed 75°C, up to 35kV
- Barrel is designed with an internal chamfer at the wire entry to ensure smooth insertion of the wire, preventing possible damage of the wire strands during insertion
- Electro-tin plated unless otherwise specified to reduce galvanic corrosion (bimetallic) and resist corrosive elements
- Connectors are clearly marked with wire size, die index, color code, and crimp location bands
- Factory pre-filled with PENETROX Type A13 oxide inhibitor
- Color coded end caps are factory inserted in the barrels to match the die color code and prevent foreign materials from entering the barrel
- Aluminum oxidation is not easily detected but causes resistance in a connection, it is imperative the proper preparation takes place prior to making an aluminum-to-aluminum connection

Application

Wire Termination

General

Catalog Number	YA39A1
Color Code	Yellow
Connector Type	DUAL RATED
Die Index	936
EU RoHS Indicator	Yes
Feature - Barrel Style	Chamfered
Feature - Barrel Type	Standard
Finish Type	Tin-Plated
Material	ALUMINUM
Physical Attribute - Number of Holes	1
Physical Attribute - Tongue Type	Standard
Plated	Y
Plating Type	Tin - Electro Plated
Sub Brand	HYLUG

Temperature Rating	194
Trade Name	HYLUG™
Type	YA-A, Dual Rated
UPC	781810751268
UPC 12 Digit	7818107512688

Dimensions

Dimension - B Length fraction	2-7/16 in
Dimension - B Length inch	2.46 in
Dimension - Bolt Hole Size inch	0.52 in
Dimension - Bolt Size fraction	1/2
Dimension - Bolt Size inch	0.5
Dimension - D inch	1.34 in
Dimension - Hole Size fraction	1/2
Dimension - Hole Size inch	0.56
Dimension - Hole Size mm	14 mm
Dimension - L Length Overall mm	134 mm
Dimension - Length Overall inch	5.26 in
Dimension - N inch	0.63 in
Dimension - Outside Diameter inch	1.46 in
Dimension - Pad Width inch	2.05 in
Dimension - Strip Length inch	2 7/8
Dimension - Stud Size fraction	1/2
Dimension - Stud Size inch	1/2
Dimension - Thread Size	1/2
Dimension - Z (inch)	0.71 in
Physical Attribute - Tongue Angle	Straight

Electrical Ratings

Voltage - Maximum	35000
Voltage Rating	35 kV

Conductor Related

Conductor - AL Str Size	700 KCMIL-750 KCMIL
Conductor - AL Str Size Range	700 kcmil - 750 kcmil
Conductor - Copper Str Size	700 KCMIL;750 KCMIL
Conductor - Copper Str Size Range	700 kcmil - 750 kcmil

Conductor - Material	ALUMINUM / COPPER
Conductor Size	700 KCMIL;750 KCMIL
Conductor Type	CODE
Wire Size	700 KCMIL;750 KCMIL

Certifications And Compliance

Buy American Compliant	Yes
Certification - CSA Approved	Yes
Certification - ETL	No
Certification - UL Recognized	No
Certification - cULus	No
Industry Standard(s)	UL 486A-486B
Standards - Industry Standards Met	UL 486A-486B
Standards - RoHS Compliance Status	CM
UL Listed	Yes

Logistics

Carton Quantity	3
Minimum Pack Quantity	1

Product Assets

- [3D Models - YA39A1_MODEL-IGES](#)
- [3D Models - YA39A1_MODEL-PDF](#)
- [3D Models - YA39A1_MODEL-STEP](#)
- [Catalogs - BURNDY Master Catalog - Section C - Compression Connections](#)
- [Catalogs - BURNDY Master Catalog - Full Line BURNDY Catalog](#)
- [Customer Notices - Prop 65 Notice](#)
- [Installation Manuals - Aluminum Installation Instructions](#)
- [Interactive Catalog - BURNDY Full-Line Digital Catalog](#)
- [Sales Drawings - SD073935-01](#)
- [Specifications - YA39A1](#)



A Hubbell brand