

FEATURES & SPECIFICATIONS

INTENDED USE — General illumination for rough service (vandal resistant - industrial applications). Ideal for tunnels, canopies, shipping docks, refrigerated areas or any non-hazardous environments that require a wet location listing. **Certain airborne contaminants can diminish the integrity of acrylic and/or polycarbonate.** [Click here for Acrylic-Polycarbonate Compatibility table for suitable uses.](#)

CONSTRUCTION — Housing made from impact-resistant, UV-resistant fiberglass-reinforced polyester with cold rolled steel enclosed wire way.

Five-stage iron-phosphate pretreatment ensures superior paint adhesion and rust resistance. Painted parts finished with high-gloss, baked white enamel.

OPTICS — High-impact acrylic 50% DR diffuser standard. Secured to fully-gasketed housing by captive tamper-resistant cam-action latches. (6 latches provided on 4' fixtures, 10 on 8' fixture.)

PLEASE NOTE: The standard 4' diffuser is 2-1/4" deep, and the standard 8' diffuser is 3" deep. To order the 4' diffuser so that it matches the depth of the 8' diffuser, order the ARDP option. The 8' diffuser is not available in the 2-1/4" depth.

ELECTRICAL — Ballast is thermally protected, resetting, Class P, HPF, non-PCB, UL listed. CSA certified ballast is standard. Rapid start lamps are sound rated A. Standard combinations are CBM approved and conform to UL 935.

INSTALLATION — Suitable for surface, chain or stem mounting.

LISTING — UL listed (standard). CSA Certified (see Options). UL listed for 25°C ambient and wet locations covered ceiling installations only.

WARRANTY — 1-year limited warranty. Complete warranty terms located at <http://www.acuitybrands.com/resources/terms-and-conditions>

Rough Service products by Lithonia Lighting are engineered to withstand extreme physical assault. When properly installed per instructions for maximum vandal resistance, any rough service polycarbonate lens and/or polycarbonate housing enclosure that is rendered inoperable as a result of physical abuse, will be repaired or replaced without charge for the life of the product.

Note: Actual performance may differ as a result of end-user environment and application.

Specifications subject to change without notice.

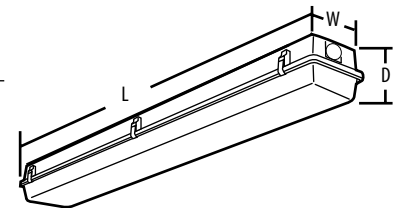
Catalog Number
Notes
Type

Rough Service Wet Location Industrial



VRI
HIGH OUTPUT
4' or 8' length
1 or 2 lamps

Specifications	
Length:	50 (127.0) 98 (248.9)
Width:	8-1/8 (20.6)
Fixture depth:	5-5/8 (14.3)



All dimensions are shown in inches (centimeters) unless otherwise noted.

ORDERING INFORMATION

Lead times will vary depending on options selected. Consult with your sales representative.

Example: VRI 2 96T8HO 120 GLR

Series	Number of lamps ¹	Lamp type ¹	Diffuser	Voltage	Ballast	Options
VRI Rough service wet location industrial For tandem double-length unit, add prefix T. Example: TVRI	1	48T8HO Nominal 44W 800mA (48")	(blank) Deep high-impact acrylic	120	GEB10IS Electronic ballast, <10% THD, instant start	EL14DW Emergency battery pack (nominal 1400 lumens) ^{5,6}
	2	96T8HO Nominal 86W T8 380mA (96")		277	GEB10RS Electronic ballast, <10% THD, rapid start ³	GLR Internal fast-blow fuse ⁶
		54T5HO 54W T5HO		347 MVOLT ²	GEB10PS Electronic ballast, <10% THD, programmed rapid start ⁴	GMF Internal slow-blow fuse ⁶
					GEB10PS90 T5HO 90° electronic ballast, ≤10% THD, programmed rapid start	RIF1 Radio interference filter, one per fixture
						CSA Listed and labeled to comply with Canadian Standards
						NOM Listed and labeled to comply with Mexican Standards
						WLF Wet location fittings (one pair, installed top)
						CS88 6' Brad Harrison 16/3 cord & straight blade plug set ⁶
						CS89 6' white cord, 16/3, no plug, wet location
						IP67 IP67 rated; requires 8 latches for 4' fixtures and 14 latches for 8' fixtures

Accessories: Order as separate catalog number.	
RK1 T20BIT	Hex-base driver bit, Torx TX20, for tamper-resistant screws with center reject pin
RK1 T20DRV	Torx TX20 screwdriver for use with tamper-resistant screws with center reject pin
WLF	Wet location fittings (one pair, not installed)
HC36	Chain hangers (1 pair, 36" long); Requires BCD ⁷
BCD	Bracket for hanger chain; Two per package ⁷

NOTES:

- Lamps not included.
- Electronic ballast 120-277V. Must specify GEB10IS.
- Only available with 347V T8.
- T8HO only.
- See [PS1400DW](#) spec sheet for more information. Luminaires ordered with the DW option (Example: EL14DW) will bear the UL Emergency Lighting Equipment label for damp or wet locations, depending on the fixture. 900 lumens for T5HO.
- Must specify voltage, 120V or 277V only. Not available with MVOLT.
- For stainless steel, specify STS (ex.: BCD STS).

VRI High Output

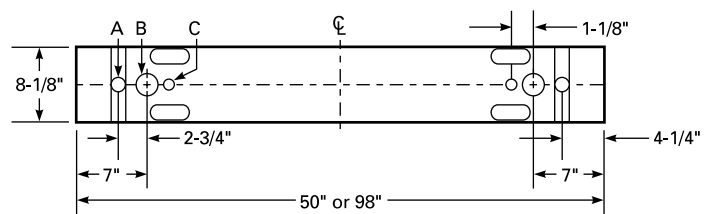
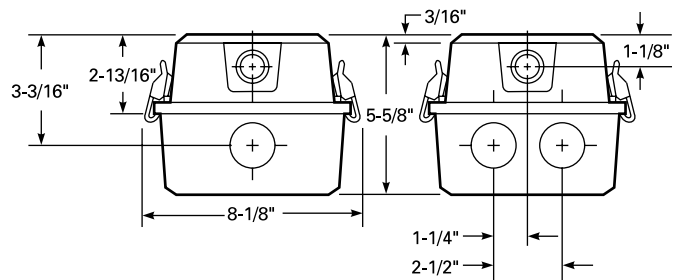
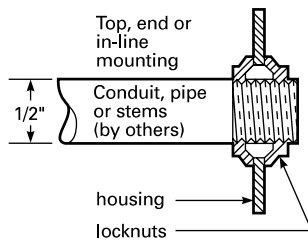
MOUNTING DATA

For unit or row installation, suspended mounting. Drill holes through housing at appropriate locations.

VRI - Includes gasketed wet location fittings on ends for power feeding/mounting. Fitting is threaded for 1/2" rigid conduit (optional WLF for top mounting). Attach to surface using fasteners and sealing washers (by others) appropriate to ceiling materials and security requirements.

Unit installation - Minimum of two hangers required.

Row installation - One hanger per channel plus one per row required.



A = 11/16" Dia. K.O. (2)

B = 1 1/8" Dia. K.O. (2)

C = Location dimple (2)

Dimensions subject to change without notice.

PHOTOMETRICS

See www.lithonia.com