



PL-L

17PL-L/COR/22-840/MF22/G/4P 10/1

Philips InstantFit LED lamps make the transition to LED from CFL lamps as simple as replacing a lamp. With a wide array of color temperatures, the InstantFit LED lamps can quickly and effectively replace compact fluorescent lamps.

Product data

General information	
Cap-Base	2G11 [2G11]
EU RoHS compliant	Yes
Nominal Lifetime (Nom)	50000 h
Switching Cycle	50000X
Light technical	
Color Code	840 [CCT of 4000K]
Beam Angle (Nom)	160 °
Luminous Flux (Nom)	2200 lm
Color Designation	Cool White (CW)
Correlated Color Temperature (Nom)	4000 K
Luminous Efficacy (rated) (Nom)	129.00 lm/W
Color Consistency	<6
Color Rendering Index (Nom)	82
LLMF At End Of Nominal Lifetime (Nom)	70 %
Operating and electrical	
Input Frequency	50 to 60 Hz
Power (Nom)	17 W
Lamp Current (Max)	154 mA
Lamp Current (Min)	68 mA
Starting Time (Nom)	0.5 s
Warm Up Time to 60% Light (Nom)	0.5 s

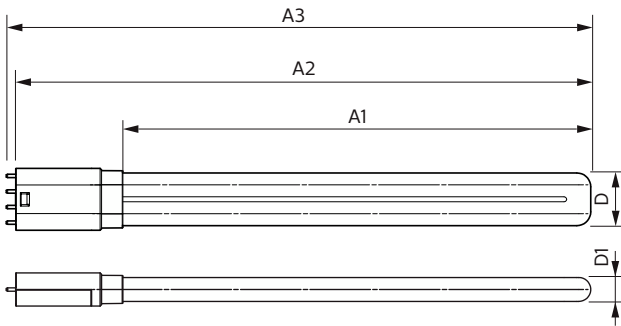
UL Type	Type B - bypass the ballast
Power Factor (Nom)	0.9
Voltage (Nom)	120-277 V
Temperature	
T-Ambient (Max)	45 °C
T-Ambient (Min)	-20 °C
T-Storage (Max)	65 °C
T-Storage (Min)	-40 °C
T-Case Maximum (Nom)	65 °C
Controls and dimming	
Dimmable	Yes
Mechanical and housing	
Bulb Finish	Frosted
Bulb Material	Glass
Product Length	- mm
Bulb Shape	Tube, single-ended
Approval and application	
Energy Saving Product	Yes

PL-L

Approval Marks	RoHS compliance UL certificate DLC compliance
Product data	
Order product name	17PL-L/COR/22-840/MF22/G/4P 10/1
EAN/UPC - Product	046677575120
Order code	929003097704

Numerator - Quantity Per Pack	1
Numerator - Packs per outer box	10
Material Nr. (12NC)	929003097704
Net Weight (Piece)	0.177 kg
Model Number	9290030977

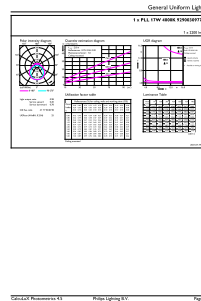
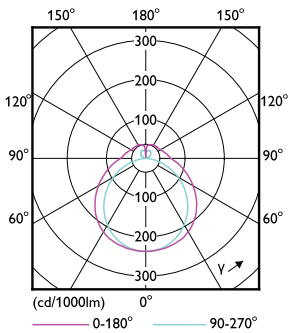
Dimensional drawing



17PL-L/COR/22-840/MF22/G/4P 10/1

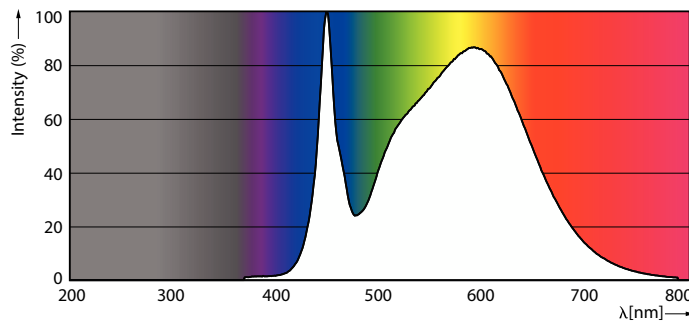
Product	D1	D2	A1	A2	A3
17PL-L/COR/22-840/MF22/G/4P 10/1	567 mm	560 mm	567 mm		

Photometric data



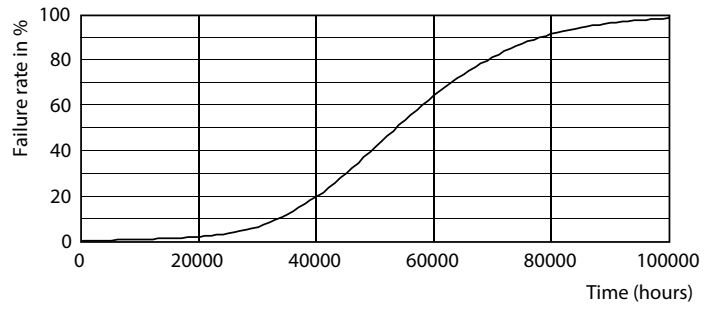
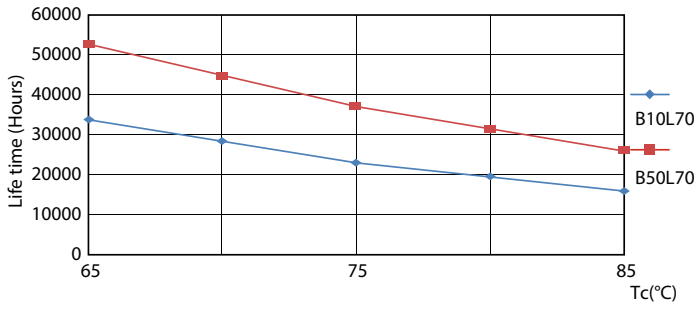
LEDtube COR PLL 17W 2G11 2100lm-LDD

LEDtube COR PLL 17W 2G11 2200lm 840-GUL



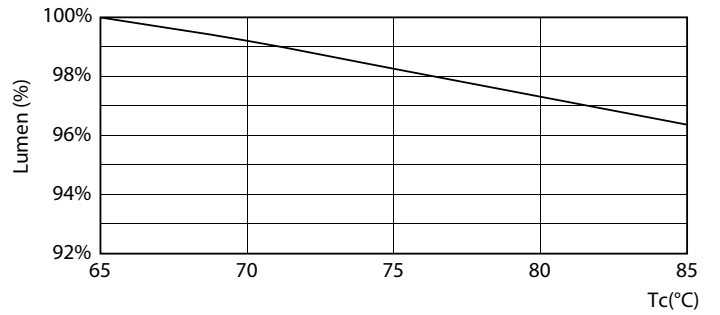
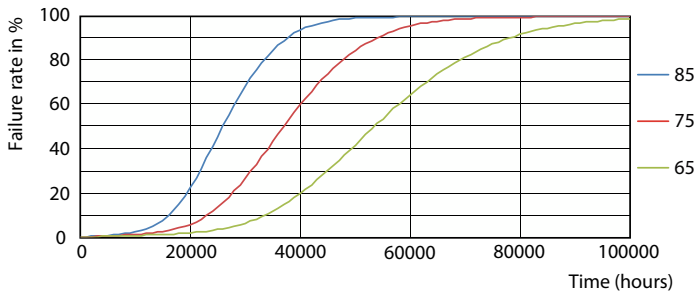
LEDtube COR PLL 17W 2G11 2200lm 840-POC

Lifetime



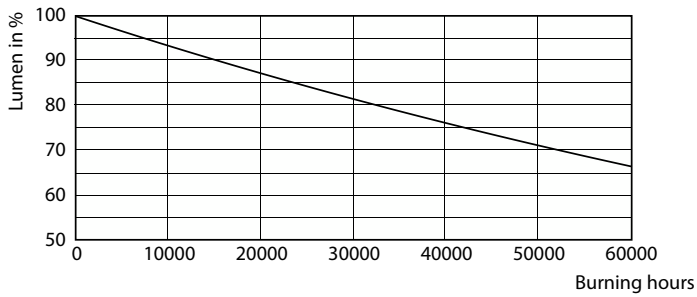
LEDtube COR PLL 17W 50K LifetimeVsTc-LED

Life Expectancy Diagram



LEDtube COR PLL 17W 50K FailureRate-LED

LEDtube COR PLL 17W 50K LumenVsTc-LMP



Lumen Maintenance Diagram

