



UPC Code : 078477877579

Country Of Origin : China

EV320

32 Amp Level 2 Electric Vehicle Charging Station - EV Series

EV Series Standard Level 2 Electric Vehicle Charging Station, 32 A, 208/240 VAC, 7.6kW Output, J1772 Charge Connector, 18' Cord, Replacement for EVR30-B1C and EVR30-R2C, Includes Mounting Bracket and Pre-Attached Input Cable, HARDWIRED ONLY

- Fast and secure charging of any SAE J1772™ compatible electric vehicle
- Optional access control; station comes with RFID disabled - simply tap RFID card to activate
- Cable design prevents cord from freezing and cracking in extreme weather
- For indoor and outdoor use with a thermoplastic, water-resistant enclosure rated NEMA Type 3R
- Easy installation with pre-attached input cable and mounting hardware included
- Energy Star Certified

Technical Information

Electrical Specifications

Amperage : 32 A

Breaker : 40 A

Charge Connector Cord : #10 AWG SAE J1772

Number of Phase / Wire : L1, L2 and Ground, Bottom Feed

Operating Temperature : -30° C to 50° C

Output Power : 7.6kW

Short Circuit Current Rating : 20 mA CCID per UL 2231

Voltage : 208/240 VAC

Material Specifications

Enclosure Material : Plastic (PC+PBT)

Enclosure Rating : NEMA Type 3R

Status Indicator : Power Present, Charging, Fault

Product Features

Application : Home|Commercial

Environmental Specifications

Altitude : Up to 6,500 ft. (2,000 m)

Charging Cable Operating Temperature : -30°C to +50°C

Cooling : Natural Cooling

Operating Humidity : < 95% Relative Humidity, Non-Condensing

Mechanical Specifications

Cable Length : 18 ft. (5.5 m)

Standards and Certifications

Standards and Certifications : UL2594| UL 2231-1| UL 2231-2| UL 2251| UL 62| UL 991|UL

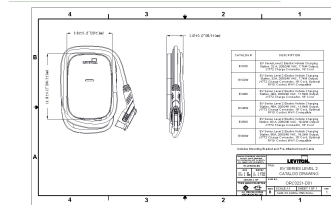
Cover Locking Mechanism : 1998| NFPA 70 Article 625|
Phillips Head Screws, No UL840| CSA Std. C22.2#280|
Padlock Option OCPP 1.6 Compliant

Device Type : Charger

Warranty

Warranty : 2-Year Limited

Dimensional Drawing



SPECIFICATION SUBMITTAL

JOB NAME: <input type="text"/>	CATALOG NUMBERS: <input type="text"/>	<input type="text"/>
JOB NUMBER: <input type="text"/>	<input type="text"/>	<input type="text"/>

Leviton Manufacturing Co., Inc

201 North Service Road, Melville, NY 11747

Telephone: +1-800-323-8920 · FAX: +1-800-832-9538 · Tech Line (8:30AM-7:30PM E.S.

T. Monday-Friday): +1-800-824-3005

Leviton Manufacturing of Canada, Ltd.

165 Hymus Boulevard, Pointe Claire, Quebec H9R 1E9 · Telephone: +1-800-469-7890 ·

FAX: +1-800-824-3005 · www.leviton.com/canada

Leviton S. de R.L. de C.V.

Lago Tana 43, Mexico DF, Mexico CP 11290 · Tel.: (+52)55-5082-1040 · FAX: (+52)

5386- 1797 · www.leviton.com.mx

Visit our Website at: www.leviton.com

© 2024 Leviton Manufacturing Co., Inc. All Rights Reserved. Subject to change without notice.

Leviton has a global presence.

If you would like to know where your local Leviton office is located please go to:

www.leviton.com/international/contacts

© 2024 Leviton Manufacturing Co., Inc.